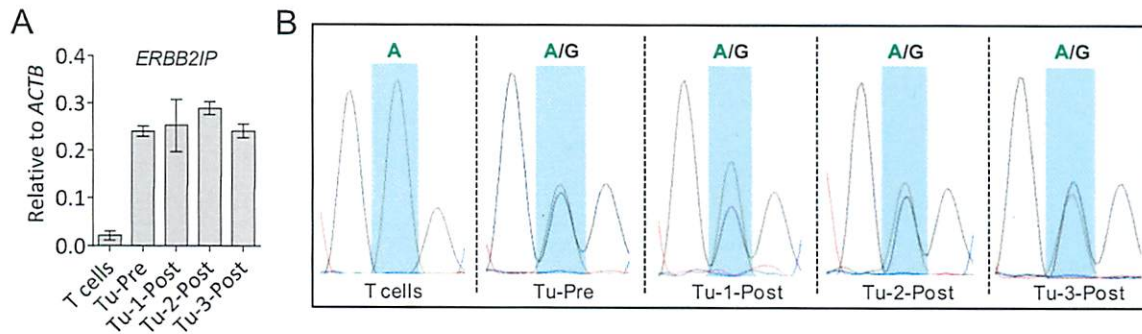


Fig. S7



**Fig. S7. Expression of wild-type and mutated *ERBB2IP* in normal and tumor tissues.** (A) RT-qPCR analysis of *ERBB2IP* expression in Patient 3737-TIL (T cells) and tumors pre-(Tu-Pre) and post adoptive cell transfer. Three separate metastatic lung lesions (Tu-1, -2, -3-Post) were resected approximately 17 months post cell infusion. Data are relative to  $\beta$ -actin (*ACTB*), and are representative of two independent experiments. (B) A 350 bp segment of the *ERBB2IP* gene containing the mutation was PCR-amplified from the cDNA samples described in (A) and Sanger sequenced. The location of the mutation is at nucleotide position 2414 of the coding sequence, corresponding to a change at position 805 of the amino acid sequence.