

SUPPLEMENTAL DATA

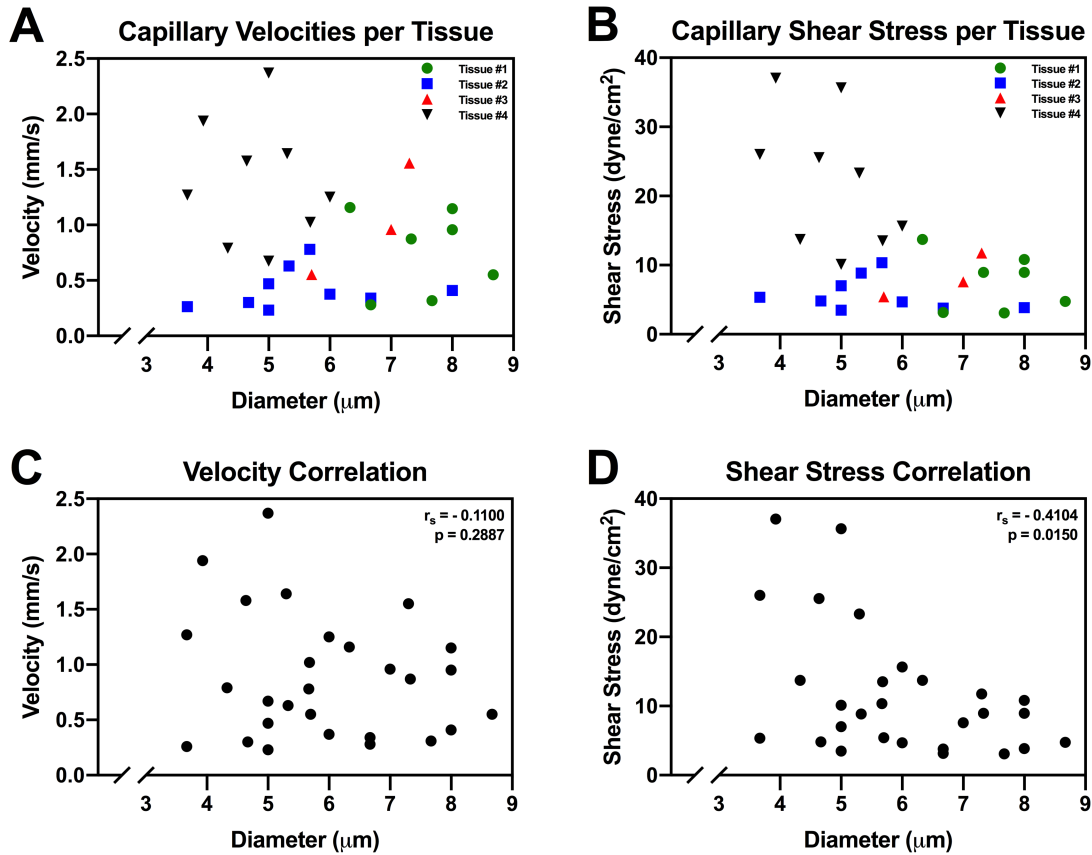
Bioreactor System to Perfuse Mesentery Microvascular Networks and Study Flow Effects During Angiogenesis

Jessica M. Motherwell, BS^{1,2}, Maximillian Rozenblum², Prasad V.G. Katakam, MD, PhD³, Walter L. Murfee, PhD^{2*}

¹ Department of Biomedical Engineering, Tulane University, New Orleans, Louisiana

² J. Crayton Pruitt Department of Biomedical Engineering, University of Florida, Gainesville, Florida

³ Department of Pharmacology, Tulane University School of Medicine, New Orleans, Louisiana



SUPPLEMENTAL FIG. 1. Assessment of the relationship between capillary diameter to velocity and shear stress. Scatter plots depicting tissue-specific velocity measurements (**A**) and calculated shear stresses (**B**) per capillary analyzed. The range of velocities and shear stresses is likely attributed to structural differences of each tissue's respective microvascular networks. (**C**, **D**) Spearman correlation analysis of velocity and shear stress compared to capillary diameter per tissue. The " r_s " indicates the Spearman rank order correlation coefficient.