

Supplementary Online Content

de Paula HL, de Souza CDF, Silva SR, et al. Risk factors for physical disability in patients with leprosy: a systematic review and meta-analysis. *JAMA Dermatol*. Published online August 7, 2019. doi:10.1001/jamadermatol.2019.1768

eTable 1. Full Search Strategy.

eFigure 1. Flow Diagram of Study Selection.

eTable 2. Risk of Bias of the Included Studies Using the Quality Assessment Tool for Observational Cohort and Cross-Sectional Studies.

eFigure 2. Forest Plot Showing the Pooled Odds Ratio for Male and Female.

eFigure 3. Forest Plot Showing the Pooled Odds Ratio for Multibacillary and Paucibacillary Leprosy.

eFigure 4. Forest Plot Showing the Pooled Odds Ratio for Leprosy Reaction.

eFigure 5. Forest Plot Showing the Pooled Odds Ratio for Lepromatous and Borderline Clinical Forms.

eFigure 6. Forest Plot Showing the Pooled Odds Ratio for Lepromatous and Tuberculoid Clinical Forms.

eFigure 7. Forest Plot Showing the Pooled Odds Ratio for Lepromatous and Indeterminate Clinical Forms.

eFigure 8. Funnel Plot for Evaluation of Publication Bias Among Studies Reporting Male and Female.

eFigure 9. Funnel Plot for Evaluation of Publication Bias Among Studies Reporting Multibacillary and Paucibacillary Leprosy.

eFigure 10. Funnel Plot for Evaluation of Publication Bias Among Studies Reporting Lepromatous and Borderline Clinical Forms.

eFigure 11. Funnel Plot for Evaluation of Publication Bias Among Studies Reporting Lepromatous and Tuberculoid Clinical Forms.

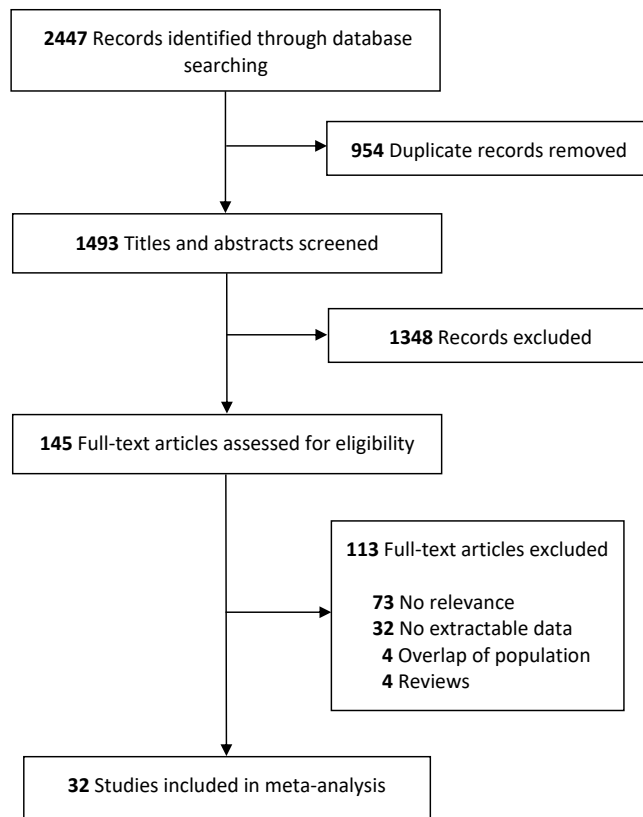
eFigure 12. Funnel Plot for Evaluation of Publication Bias Among Studies Reporting Lepromatous and Indeterminate Clinical Forms.

This supplementary material has been provided by the authors to give readers additional information about their work.

eTable 1. Full Search Strategy.

Search	Query	Items found
Search strategy PubMed		
<u>#1</u>	("leprosy"[MeSH Terms] OR "leprosy"[All Fields]) AND ((("physical examination"[MeSH Terms] OR ("physical"[All Fields] AND "examination"[All Fields]) OR "physical examination"[All Fields] OR "physical"[All Fields]) AND disability[All Fields])	636
Search strategy SCOPUS		
<u>#1</u>	(leprosy AND "physical disability")	601
Search strategy Web of Science		
<u>#1</u>	((Leprosy AND physical disability)	1210

eFigure 1. Flow Diagram of Study Selection

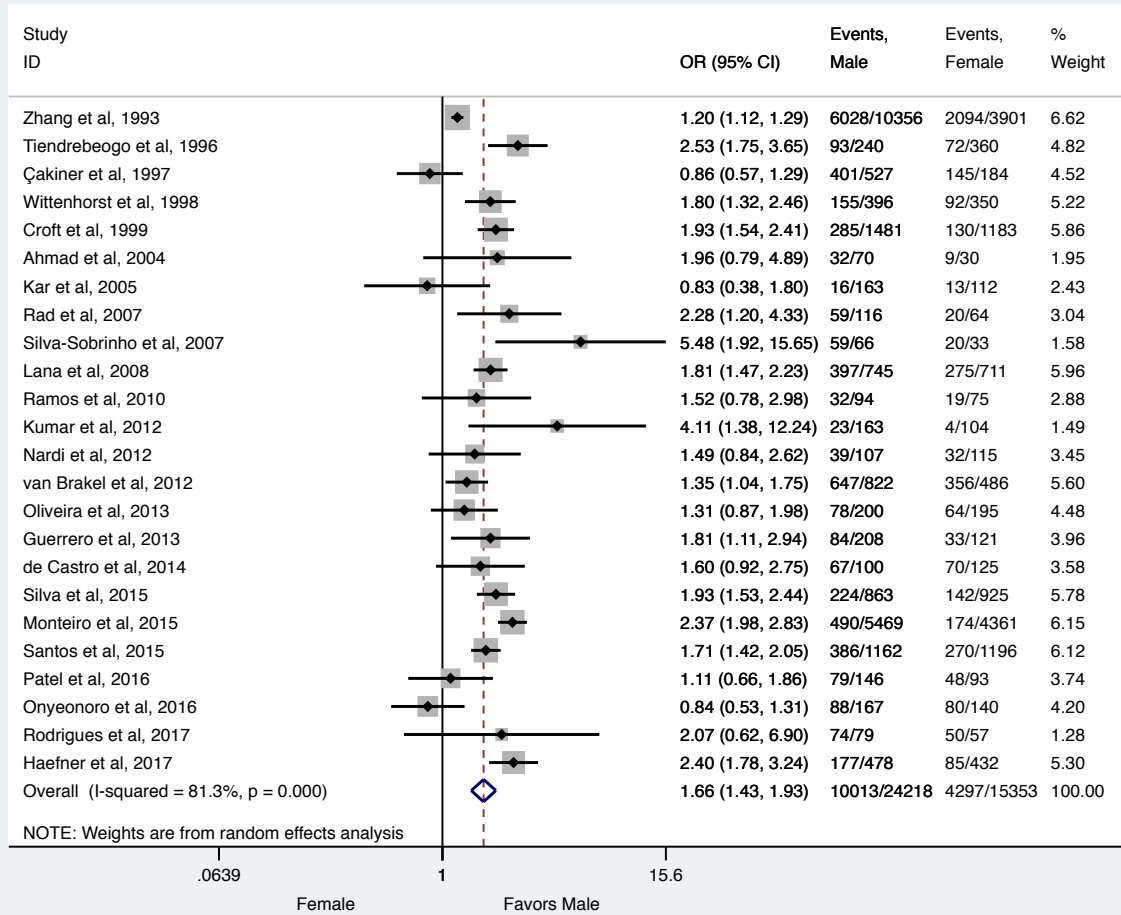


eTable 2. Risk of Bias of the Included Studies Using the Quality Assessment Tool for Observational Cohort and Cross-Sectional Studies.

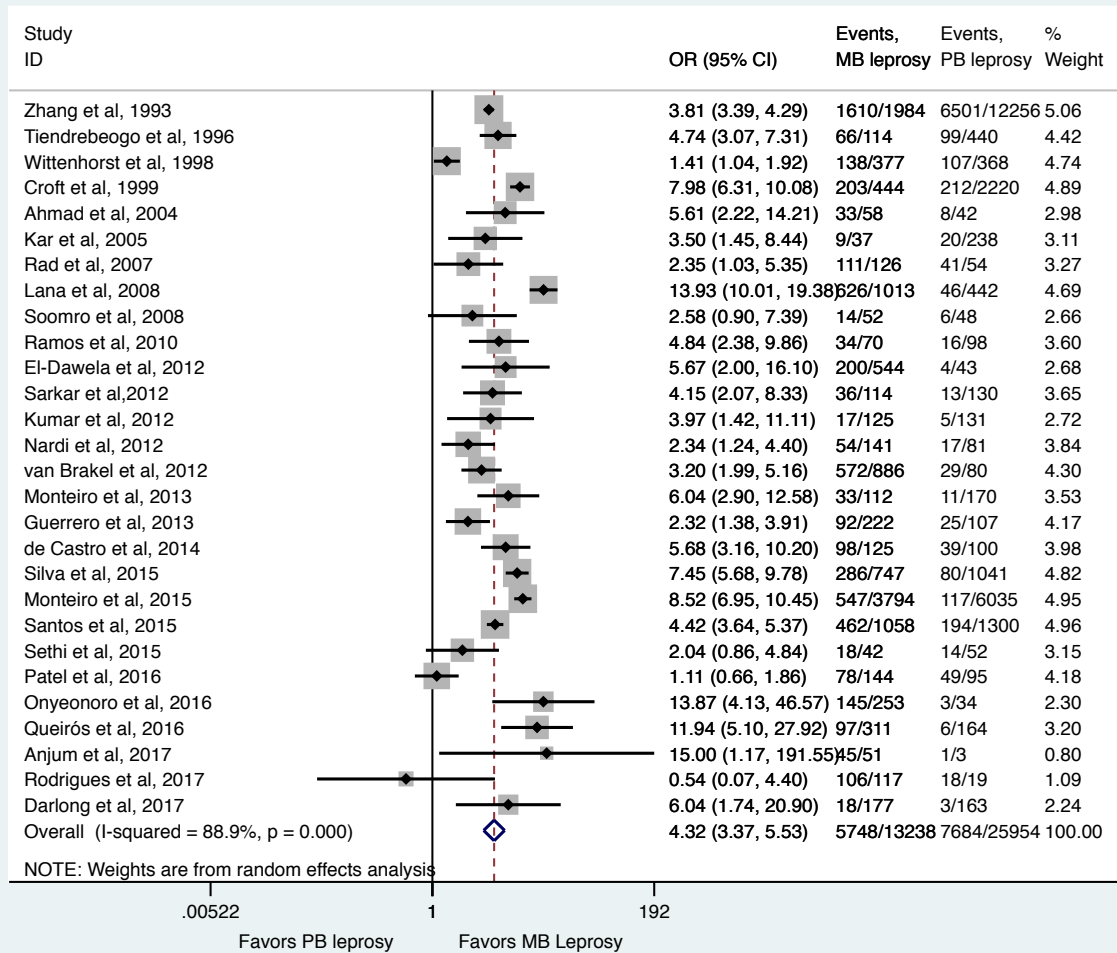
Study	1	2	3	4	5	6	7	8	9	10	11	12	13	14
Zhang et al, 1993	Y	Y	Y	Y	NA	N	N	NA	Y	N	Y	N	NR	N
Tiendrebeogo et al, 1996	Y	Y	N	Y	N	N	N	NA	Y	N	Y	N	NR	Y
Çakiner et al, 1997	Y	Y	N	Y	N	N	N	NA	Y	N	Y	N	NR	N
Wittenhorst et al, 1998	Y	Y	Y	Y	NA	N	N	NA	Y	N	Y	N	NR	N
Croft et al, 1999	Y	Y	Y	Y	N	N	N	NA	Y	N	Y	N	NR	N
Ahmad et al, 2004	Y	Y	N	Y	N	N	N	NA	Y	N	Y	N	NR	N
Kar et al, 2005	Y	Y	Y	Y	NA	N	N	NA	Y	N	Y	N	NR	N
Rad et al, 2007	Y	Y	N	Y	N	N	N	NA	Y	N	Y	N	NR	N
Silva-Sobrinho et al, 2007	Y	Y	N	Y	N	N	N	NA	Y	N	Y	N	NR	N
Lana et al, 2008	Y	Y	NR	Y	N	N	N	NA	Y	N	Y	N	NR	N
Soomro et al, 2008	Y	Y	NR	Y	N	N	N	NA	Y	N	Y	N	N	N
Ramos et al, 2010	Y	Y	Y	Y	NA	N	N	NA	Y	N	Y	N	NR	Y
El-Dawela et al, 2012	Y	Y	Y	Y	NA	N	N	NA	Y	N	Y	N	NR	N
Sarkar et al, 2012	Y	Y	Y	Y	NA	N	N	NA	Y	N	Y	N	NR	N
Kumar et al, 2012	Y	Y	Y	Y	Y	Y	N	NA	Y	Y	Y	N	N	Y
Nardi et al, 2012	Y	Y	NR	Y	NA	N	N	NA	Y	N	Y	N	NR	N
van Brakel et al, 2012	Y	Y	Y	Y	NA	N	N	NA	Y	N	Y	N	NR	N
Monteiro et al, 2013	Y	Y	Y	Y	NA	N	N	NA	Y	N	Y	N	NR	N
Oliveira et al, 2013	Y	Y	NR	Y	NR	N	N	NA	Y	N	Y	N	NR	N
Guerrero et al, 2013	Y	Y	Y	Y	NR	N	N	NA	Y	N	Y	N	NR	Y
de Castro et al, 2014	Y	Y	Y	Y	Y	N	N	NA	Y	N	Y	N	NR	Y
Silva et al, 2015	Y	Y	Y	Y	NA	N	N	NA	Y	N	Y	N	NR	N
Monteiro et al, 2015	Y	Y	Y	Y	NA	N	N	NA	Y	N	Y	N	NR	Y
Santos et al, 2015	Y	Y	Y	Y	NA	N	N	NA	Y	N	Y	N	NR	Y

Sethi et al, 2015	Y	Y	NR	Y	NA	N	N	NA	Y	N	Y	N	NR	N
Patel et al, 2016	Y	Y	N	Y	NA	N	N	NA	Y	N	Y	N	NR	N
Onyeonoro et al, 2016	Y	Y	NR	Y	NA	N	N	NA	Y	N	Y	N	NR	N
Queirós et al, 2016	Y	Y	NR	Y	NA	N	N	NA	Y	N	Y	N	NR	N
Anjum et al, 2017	Y	Y	NR	Y	NA	N	N	NA	Y	N	Y	N	NR	N
Rodrigues et al, 2017	Y	Y	NR	Y	NA	N	N	NA	Y	N	Y	N	NR	N
Darlong et al, 2017	Y	Y	NR	Y	NA	N	N	NA	Y	N	Y	N	NR	N
Haefner et al, 2017	Y	Y	NR	Y	NA	N	N	NA	Y	N	Y	N	NR	N

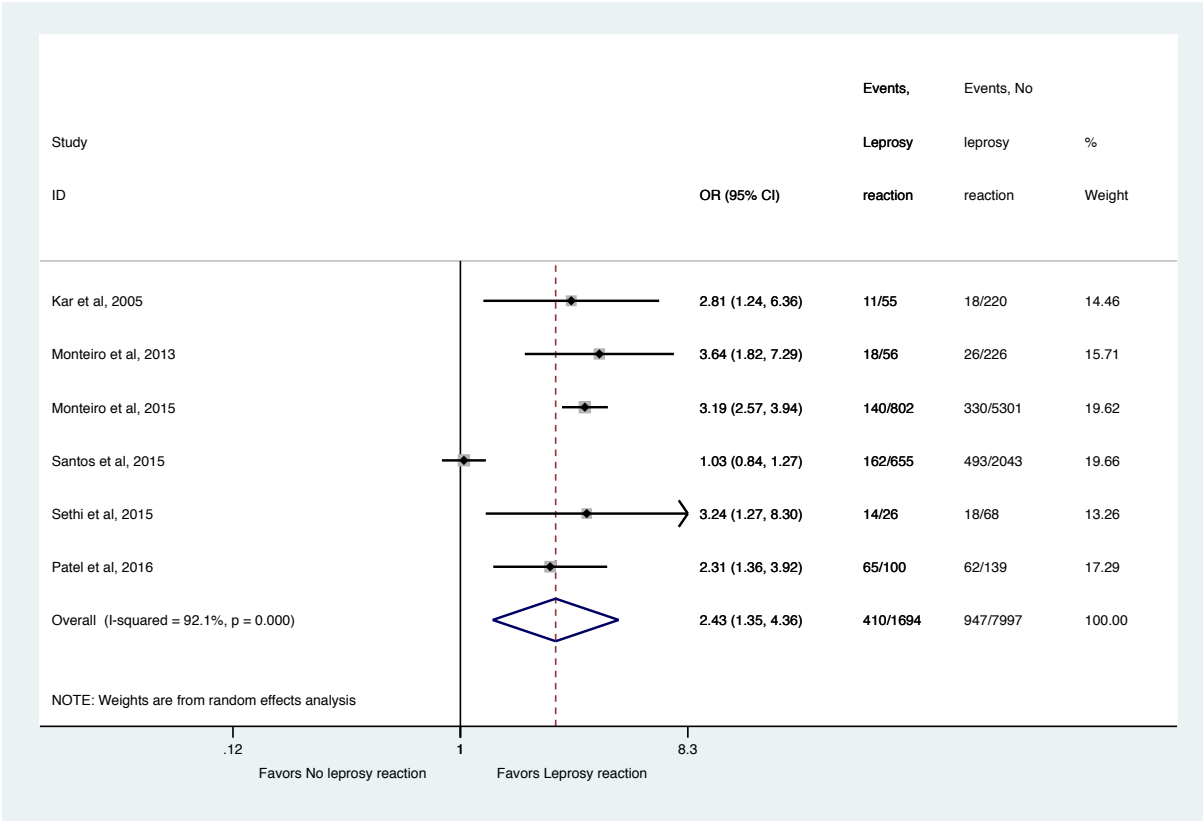
Y, yes; N, no; CD, cannot determine; NA, not applicable; NR, not reported. (1) objective clearly stated; (2) eligibility criteria clearly described; (3) representative sample of clinical population of interest; (4) all eligible participants enrolled; (5) sample size calculation; (6) exposure measured prior to the outcome; (7) timeframe sufficient; (8) examine different levels of the exposure; (9) exposure clearly described; (10) exposure(s) assessed more than once over time; (11) outcome clearly described; (12) outcome assessors blinded to the exposure; (13) loss to follow-up less than 20%; (14) adjusted statistics performed.



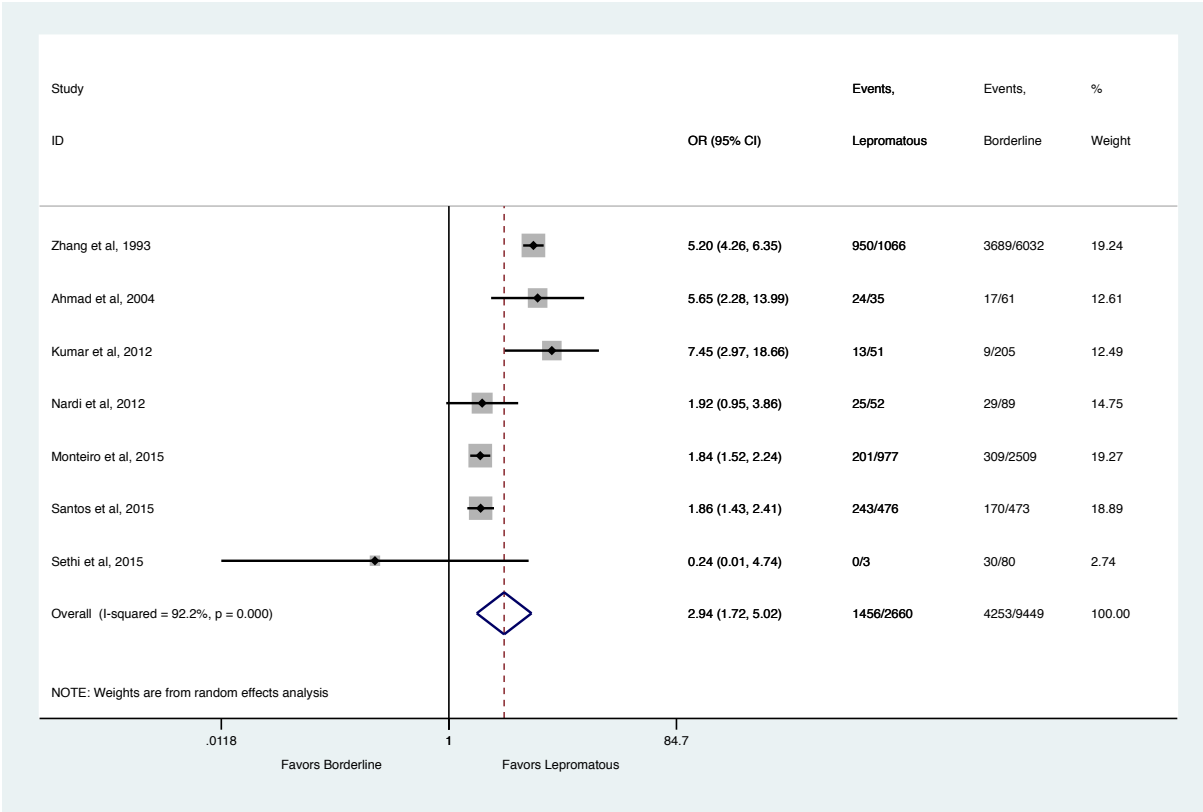
eFigure 2. Forest Plot Showing the Pooled Odds Ratio for Male and Female.



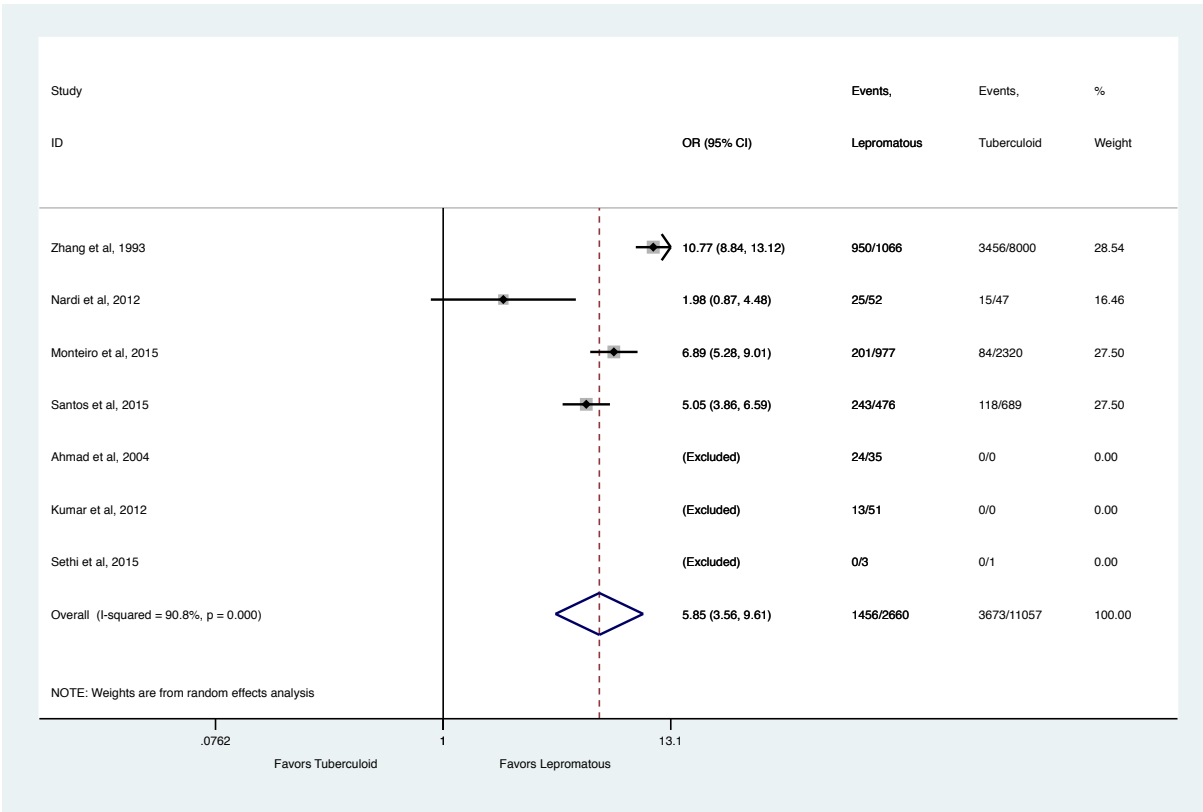
eFigure 3. Forest Plot Showing the Pooled Odds Ratio for Multibacillary and Paucibacillary Leprosy.



eFigure 4. Forest Plot Showing the Pooled Odds Ratio for Leprosy Reaction.



eFigure 5. Forest Plot Showing the Pooled Odds Ratio for Lepromatous and Borderline Clinical Forms.



eFigure 6. Forest Plot Showing the Pooled Odds Ratio for Lepromatous and Tuberculoid Clinical Forms.

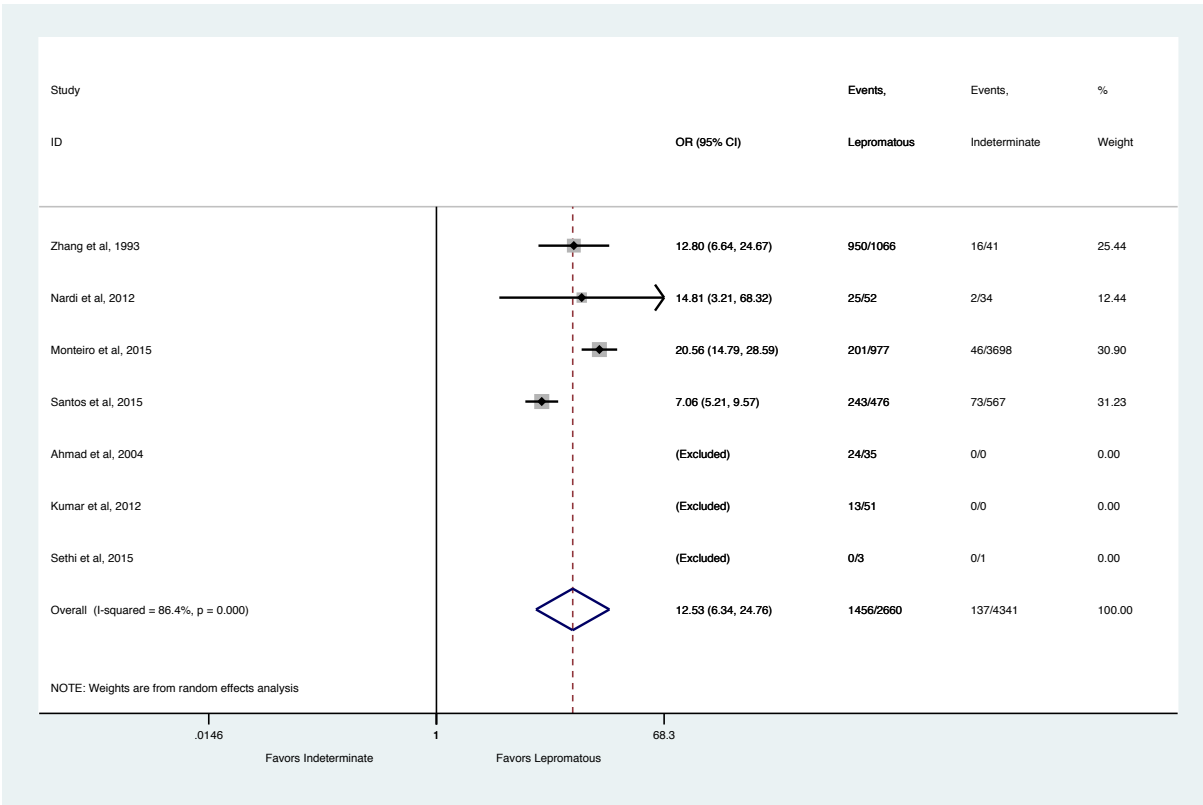
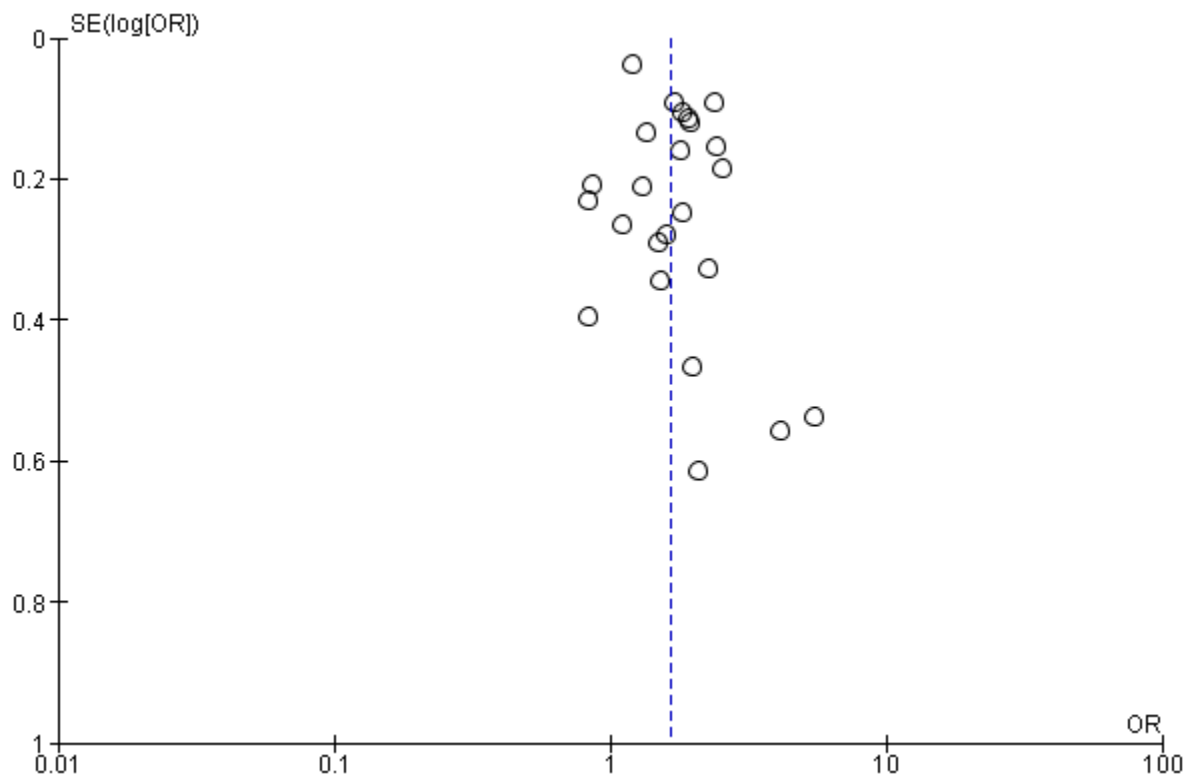
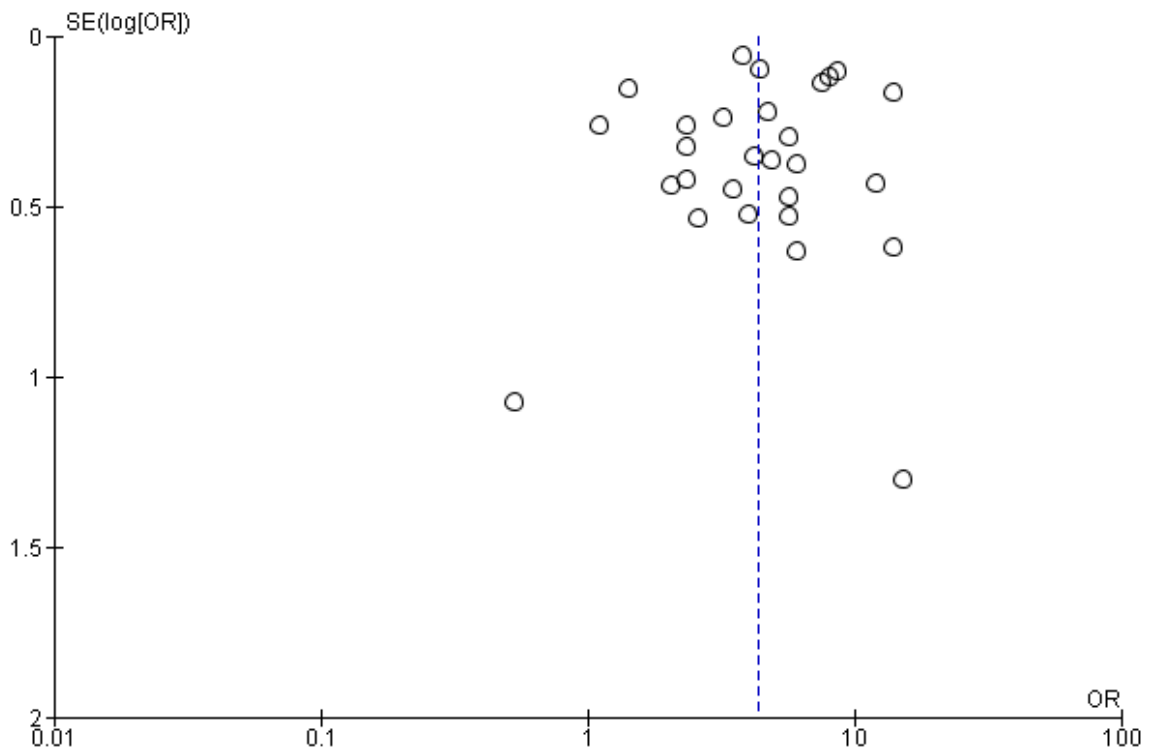


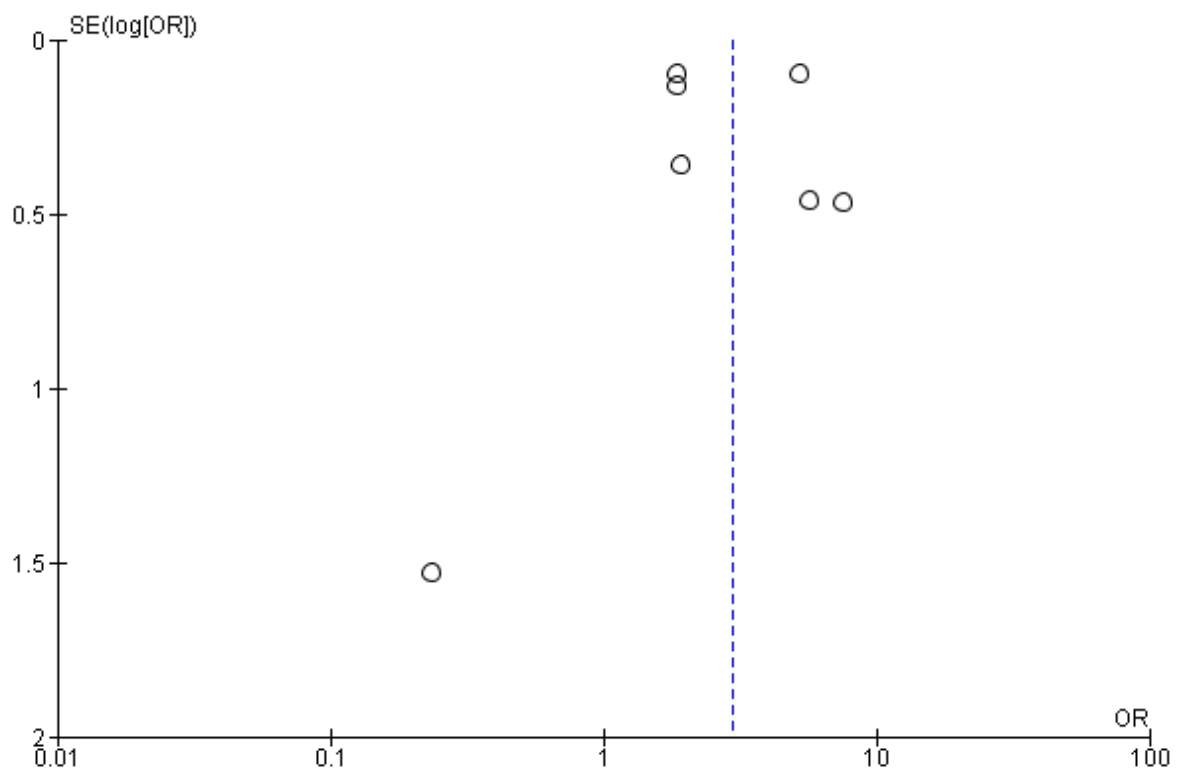
Figure 7. Forest Plot Showing the Pooled Odds Ratio for Lepromatous and Indeterminate Clinical Forms.



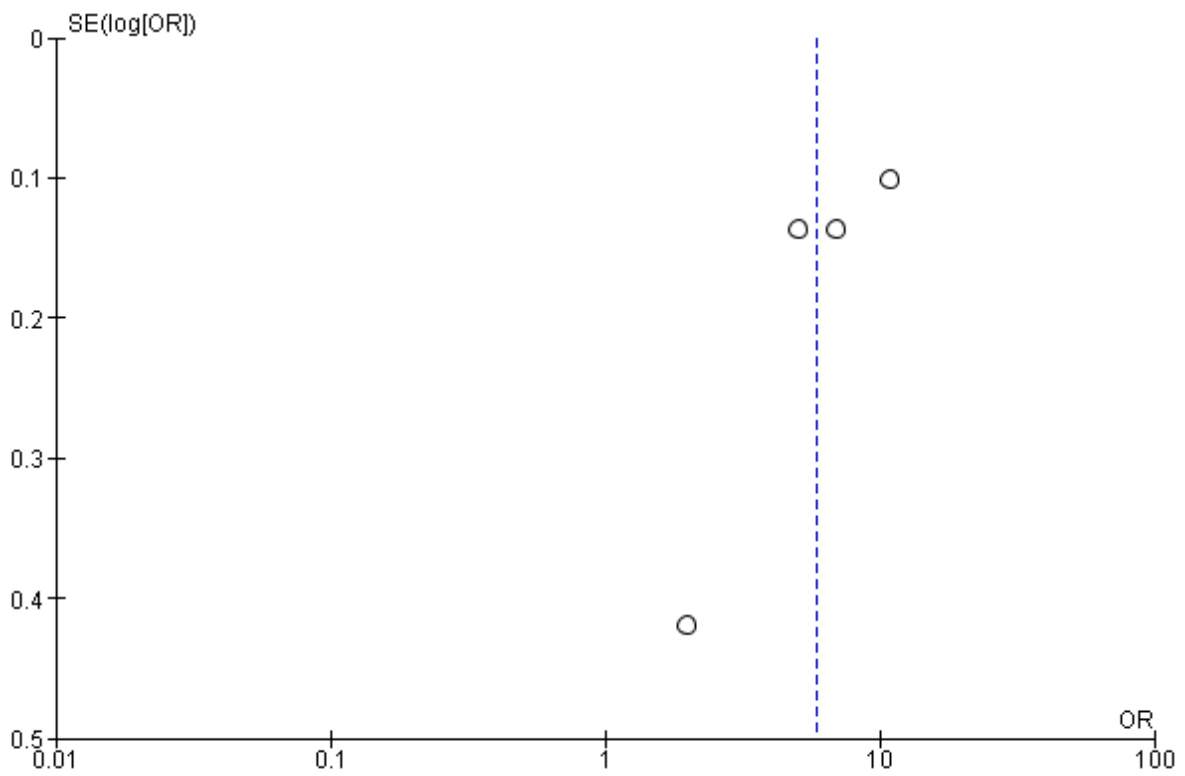
eFigure 8. Funnel Plot for Evaluation of Publication Bias Among Studies Reporting Male and Female.



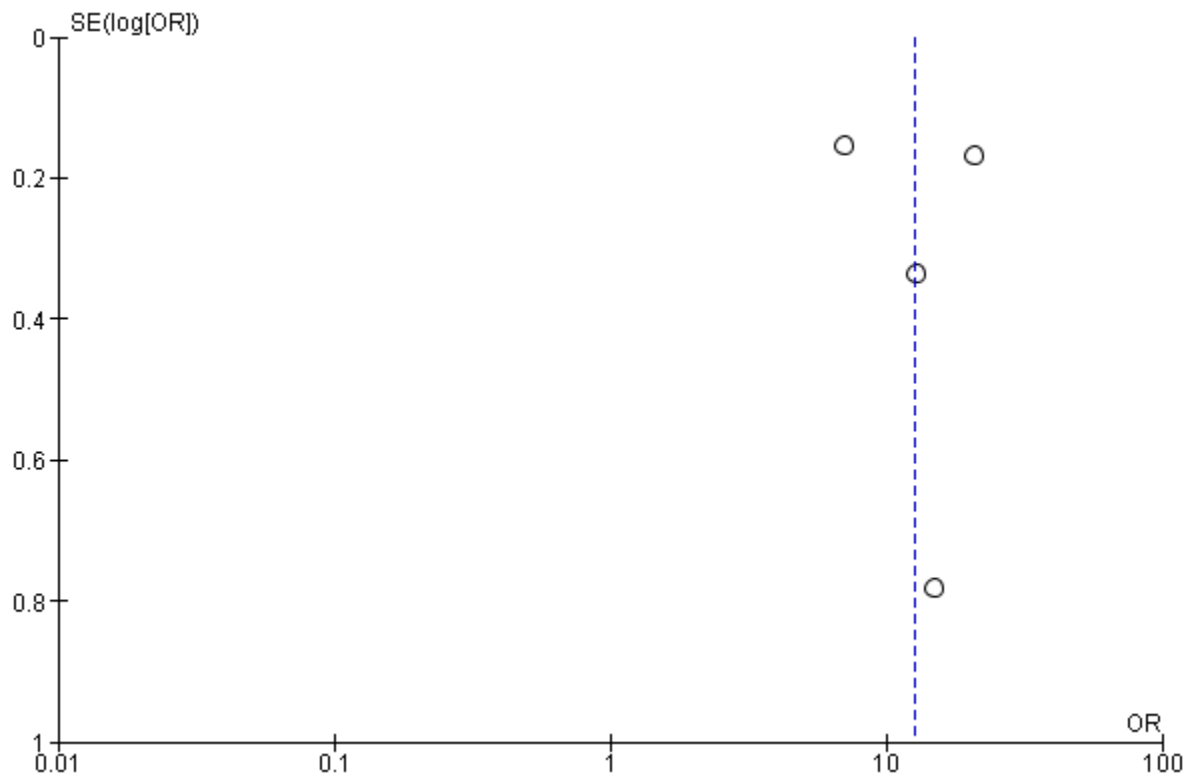
eFigure 9. Funnel Plot for Evaluation of Publication Bias Among Studies Reporting Multibacillary and Paucibacillary Leprosy.



eFigure 10. Funnel Plot for Evaluation of Publication Bias Among Studies Reporting Lepromatous and Borderline Clinical Forms.



eFigure 11. Funnel Plot for Evaluation of Publication Bias Among Studies Reporting Lepromatous and Turberculoid Clinical Forms.



eFigure 12. Funnel Plot for Evaluation of Publication Bias Among Studies Reporting Lepromatous and Indeterminate Clinical Forms.