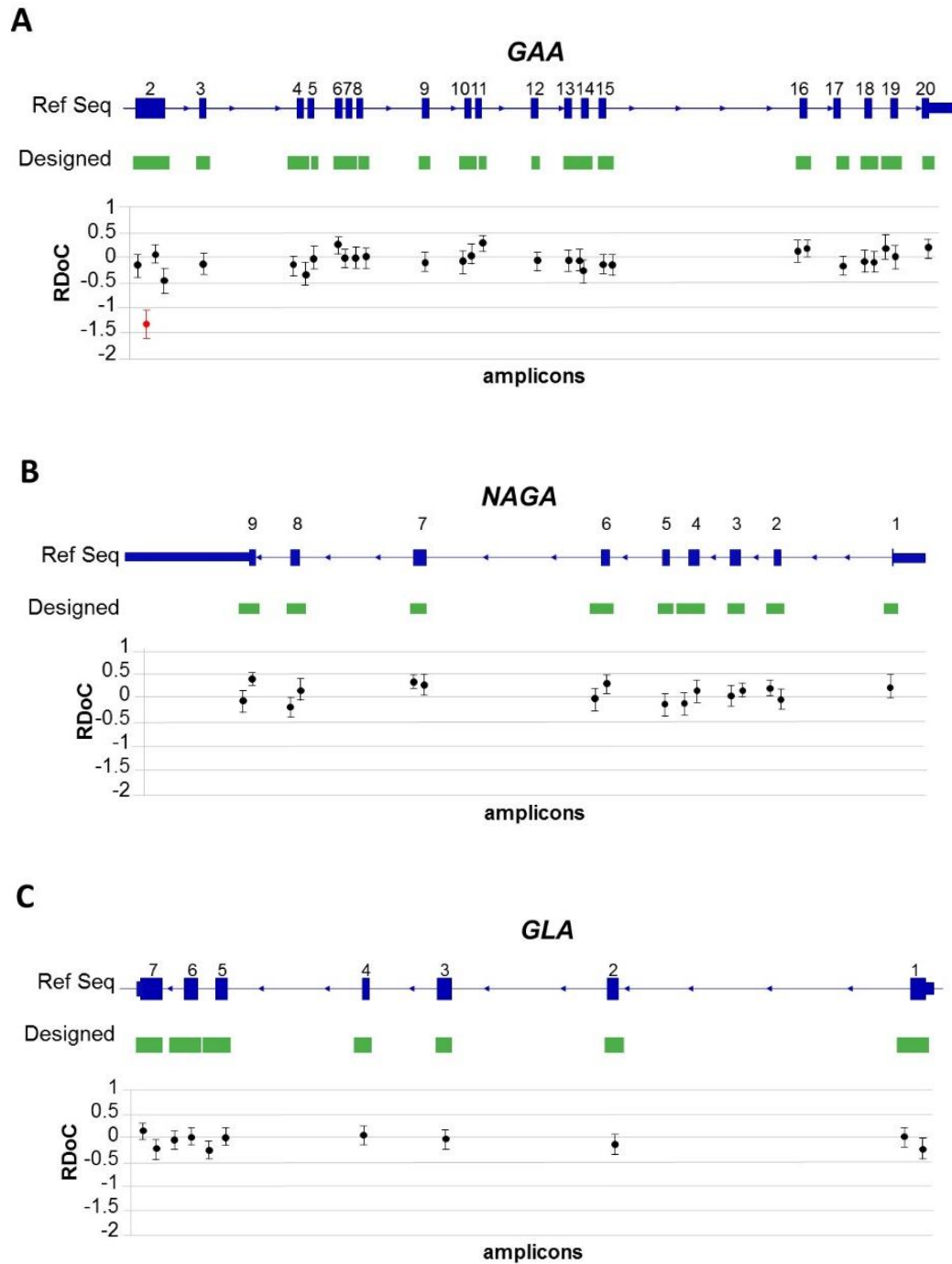


Supplementary Material to "Sensitivity, advantages, limitations, and clinical utility of targeted next-generation sequencing panels for the diagnosis of selected lysosomal storage disorders"



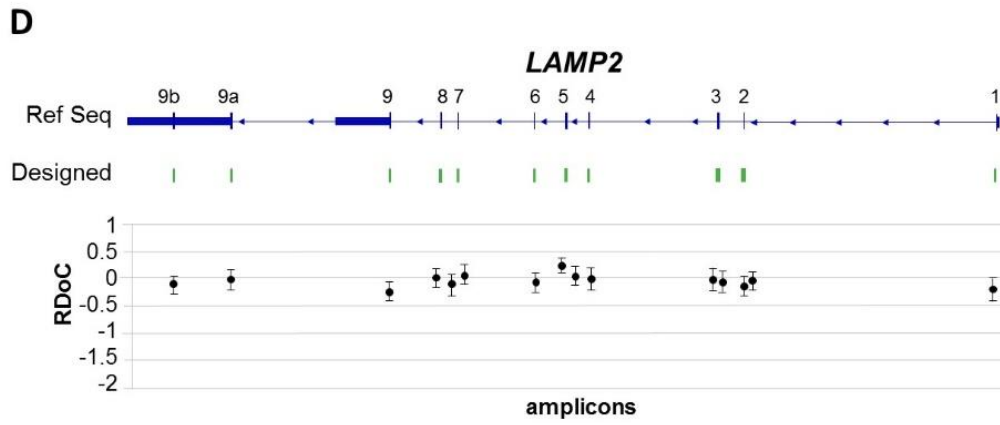


Figure S1 - Relative Depth of Coverage (RDoC) of 73 custom amplicons corresponding to eight-nine samples analyzed in one run. In blue is represented the reference sequence indicating the coding exons and in green the targets designed for NGS sequencing. A) *GAA*, B) *NAGA*, C) *GLA* and D) *LAMP2*.