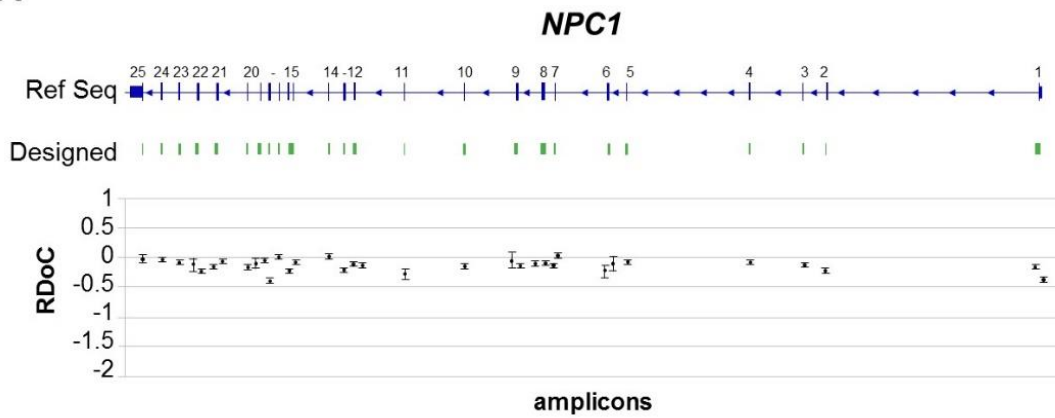
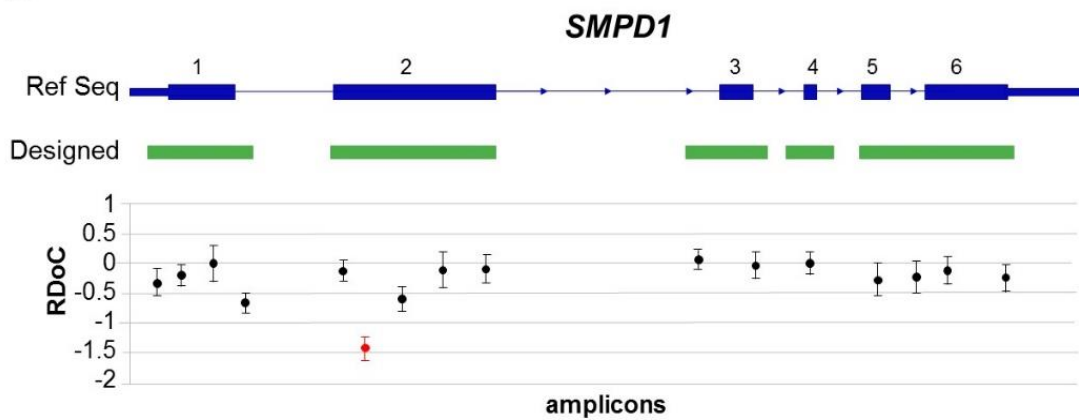


Supplementary Material to "Sensitivity, advantages, limitations, and clinical utility of targeted next-generation sequencing panels for the diagnosis of selected lysosomal storage disorders"

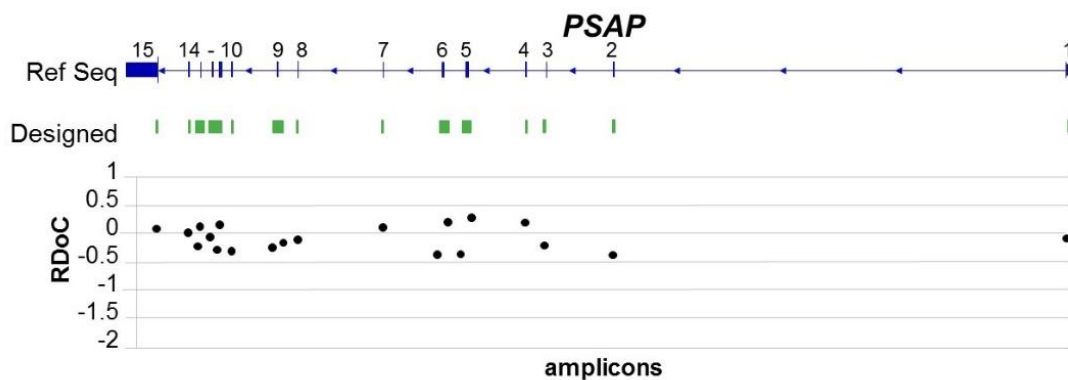
A

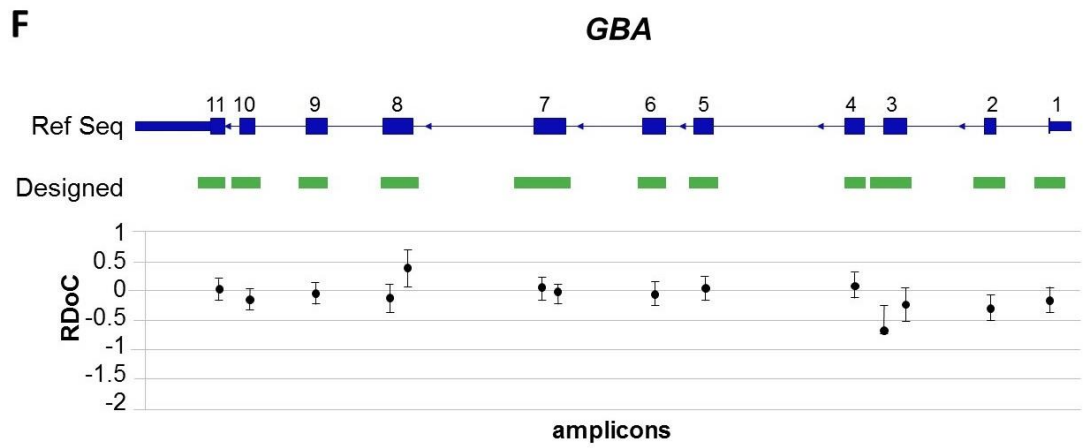
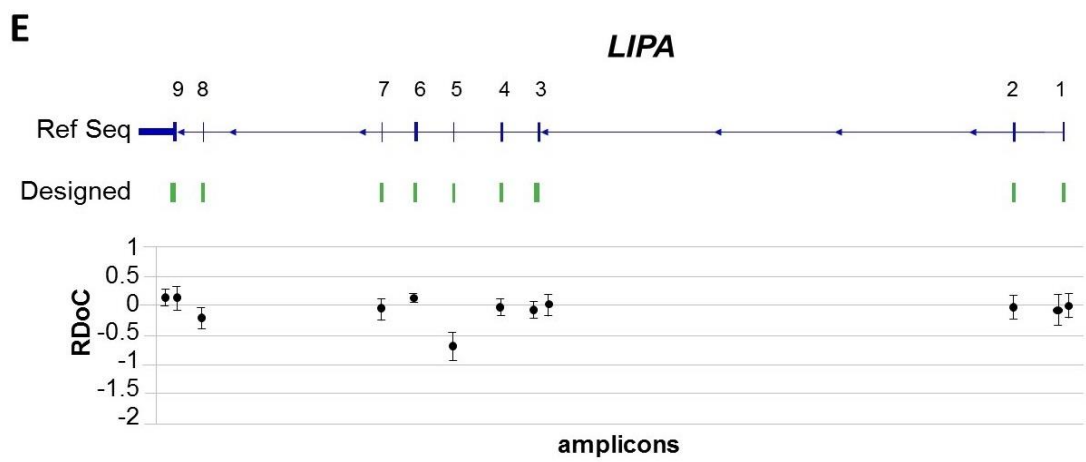
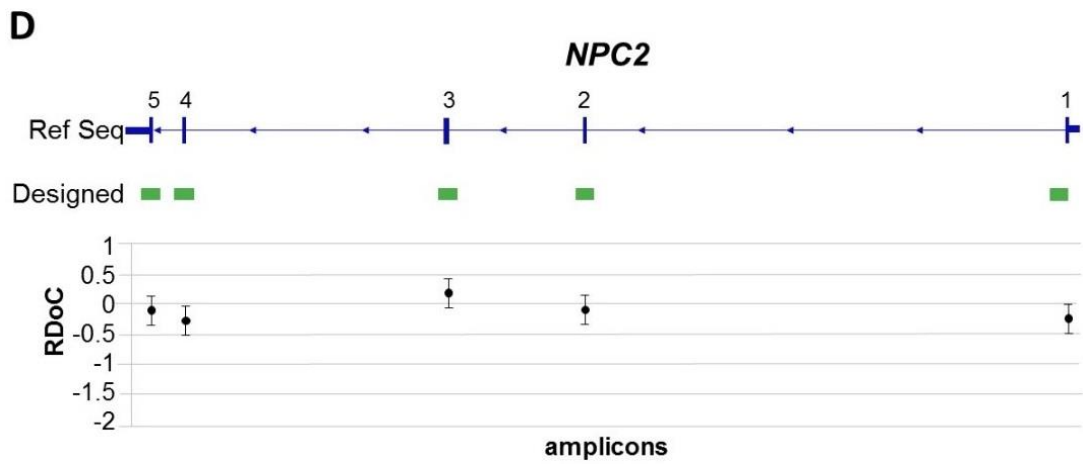


B



C





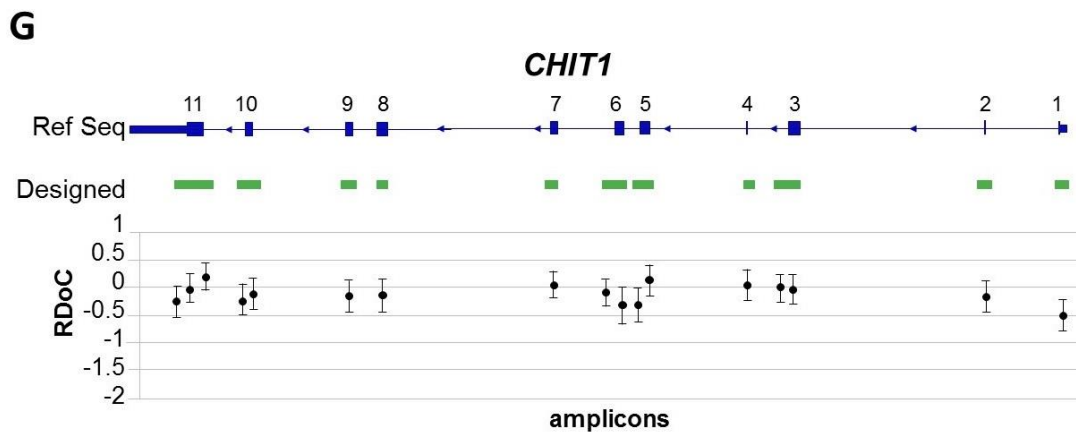


Figure S2 - Relative Depth of Coverage (RDoC) of 118 custom amplicons corresponding to eight-nine samples analyzed in one run. In blue is represented the reference sequence indicating the coding exons and in green the targets designed for NGS sequencing. A) *NPC1*, B) *SMPD1*, C) *PSAP*, D) *NPC2*, E) *LIPA*, F) *GBA* and G) *CHIT1*.