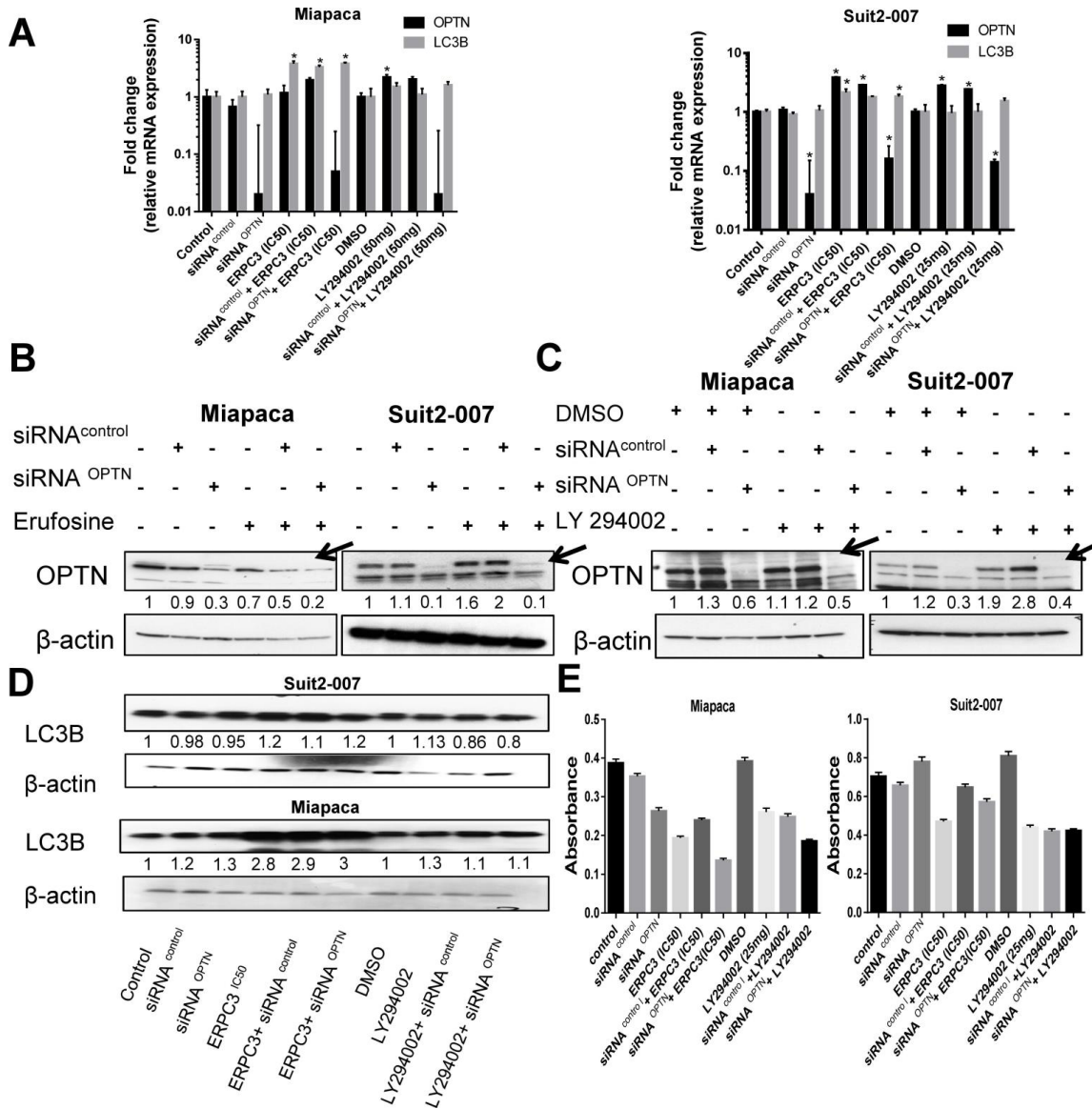


Supplementary Figure 4



Supplementary Figure 4: Effects of combining OPTN knockdown with drugs modulating autophagy. **A:** mRNA expression of OPTN and LC3b in OPTN knockdown samples alone or combined with erufosine or LY294002. **B.:** WB of cells treated with the autophagy inducer erufosine (IC50), one day post-transfection with specific or non-specific siRNA to OPTN. 10-30µg protein was loaded per sample. Band densities were calculated via ImageJ software and adjusted to β-actin. **C:** WB of cells treated with the autophagy inhibitor LY294002 (25 µM for Suit2-007 and 50µM for Miapaca cells) one day post-transfection with specific or non-specific siRNA to OPTN. Band densities were calculated via ImageJ software and adjusted to β-actin. **D:** WB expression of LC3B in response to OPTN knockdown alone or in combination with erufosine and LY294002. Analysis of the band density was done by ImageJ software and corrected to β-actin as loading control. Further controls were the untreated control (erufosine) and the solvent DMSO (LY294002). **E:** MTT assay of the combination effect of OPTN KD with or without erufosine or LY 294002. The proliferation of Miapaca and Suit2-007 cells was measured at 540 nm (reference of 690 nm). Figures were generated by GraphPad Prism software.