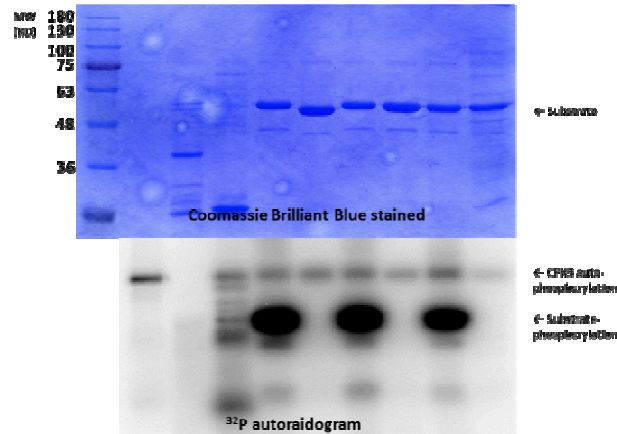
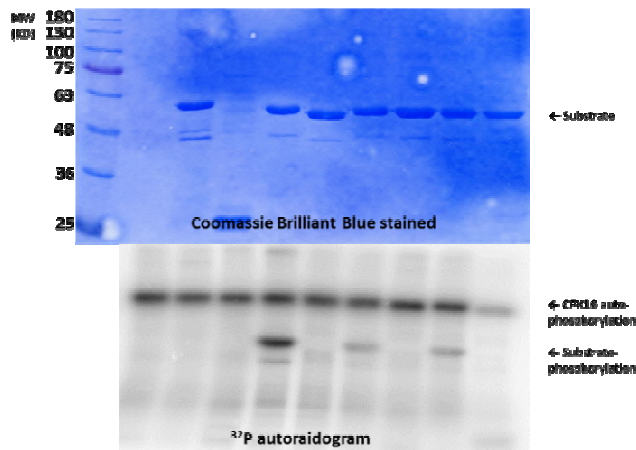


CPK3-6His								
ACA2-MT	-	+	-	-	-	-	-	-
ABF3	-	-	+	-	-	-	-	-
ABF3-P1	-	-	-	+	-	-	-	-
ABF3-P1 MT	-	-	-	-	+	-	-	-
ABF3-P3	-	-	-	-	-	+	-	-
ABF3-P3 MT	-	-	-	-	-	-	+	-
ABF3-P4	-	-	-	-	-	-	-	+
ABF3-P4 MT	-	-	-	-	-	-	-	+



CPK16-6His	+	+	+	+	+	+	+	+
Di19-2-2-MT	-	+	-	-	-	-	-	-
ABF3	-	-	+	-	-	-	-	-
ABF3-P1	-	-	-	+	-	-	-	-
ABF3-P1 MT	-	-	-	-	+	-	-	-
ABF3-P3	-	-	-	-	-	+	-	-
ABF3-P3 MT	-	-	-	-	-	-	+	-
ABF3-P4	-	-	-	-	-	-	-	+
ABF3-P4 MT	-	-	-	-	-	-	-	+



Additional file 3. The *in vitro* kinase assay of GST-ABF3 phosphorylated by mutated GST-CDPK16-6His. Recombinant fusion peptides ABF3 P1 [(LQRQGpSLpTLPR), ABF3 P1 MT (LQRQGpSLALPR), ABF3 P3 (LPRTIpSQRVD), ABF3 P3 MT (LPRTIAQKRVD), ABF3 P4 (QCLRRTLpTGPW) and ABF3 P4 MT (QCLRRTLpAGPW)] were used as substrates, and two recombinant kinases (AtCDPK16-6His, AtCDPK3-6His) were used to perform the kinase assay *in vitro*.