

Supplementary Figure 6

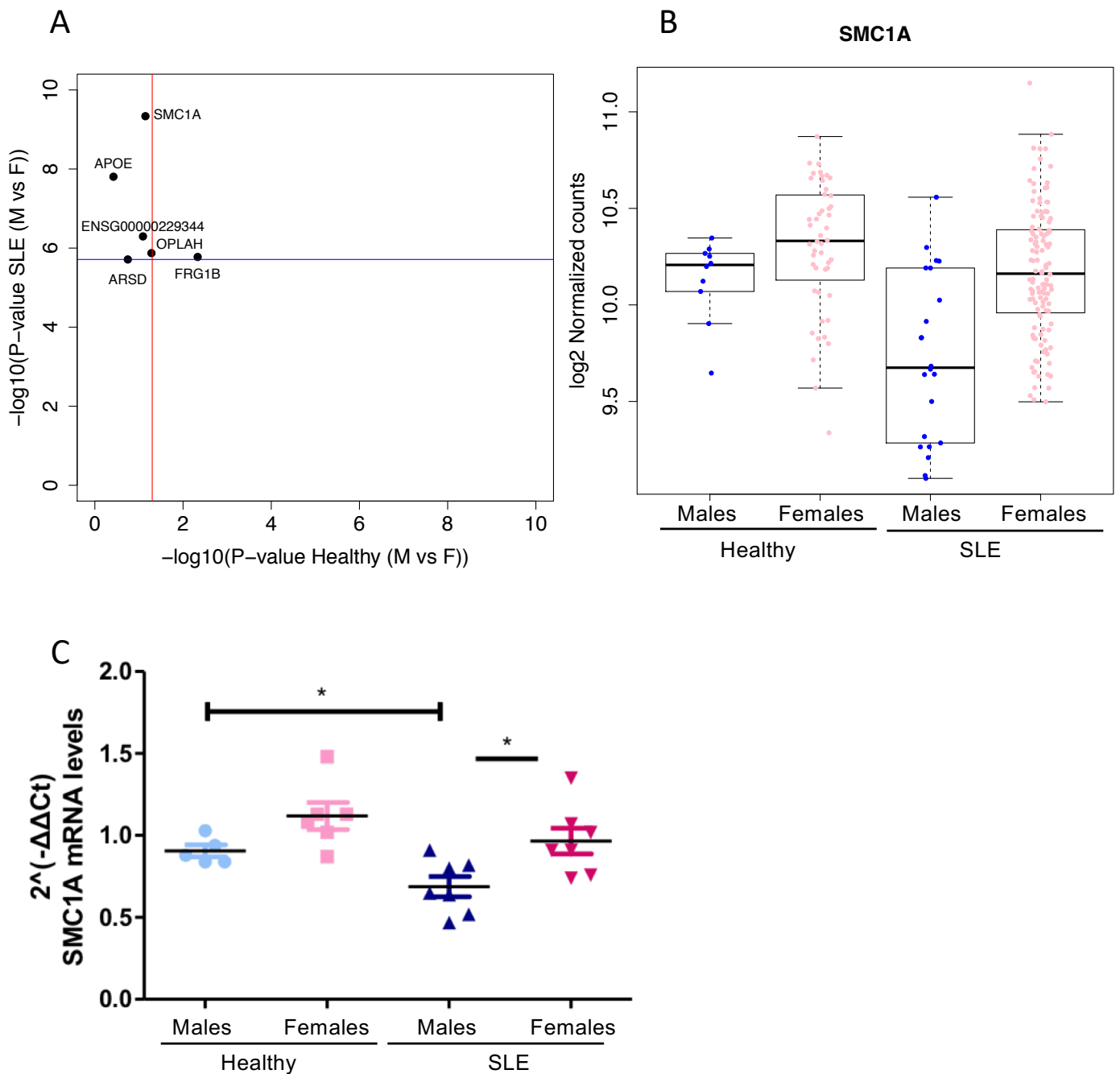


Figure S6. SLE-specific gender differences in blood transcriptome

(A) Genes with differential expression (Bonferroni significant) between male and female SLE patients that are not differentially expressed (90% FDR threshold) between male and female healthy individuals. The blue line indicates the Bonferroni p-value threshold while the red line is set at p-value 0.05. (B) Scatter plot with bar of SMC1A expression (normalized RNA-seq) levels in male and female SLE and healthy individuals. Bars represent median values. (C) Scatter plot of SMC1A mRNA expression in purified CD14⁺ monocytes from the peripheral blood of male and female SLE and healthy individuals. Bars represent median values (two-way ANOVA [F (1, 20) = 11.48, p-value = 0.0029] followed by Tukey's multiple comparisons test; asterisk (*) designates significant (p-value < 0.05) pairwise comparison).