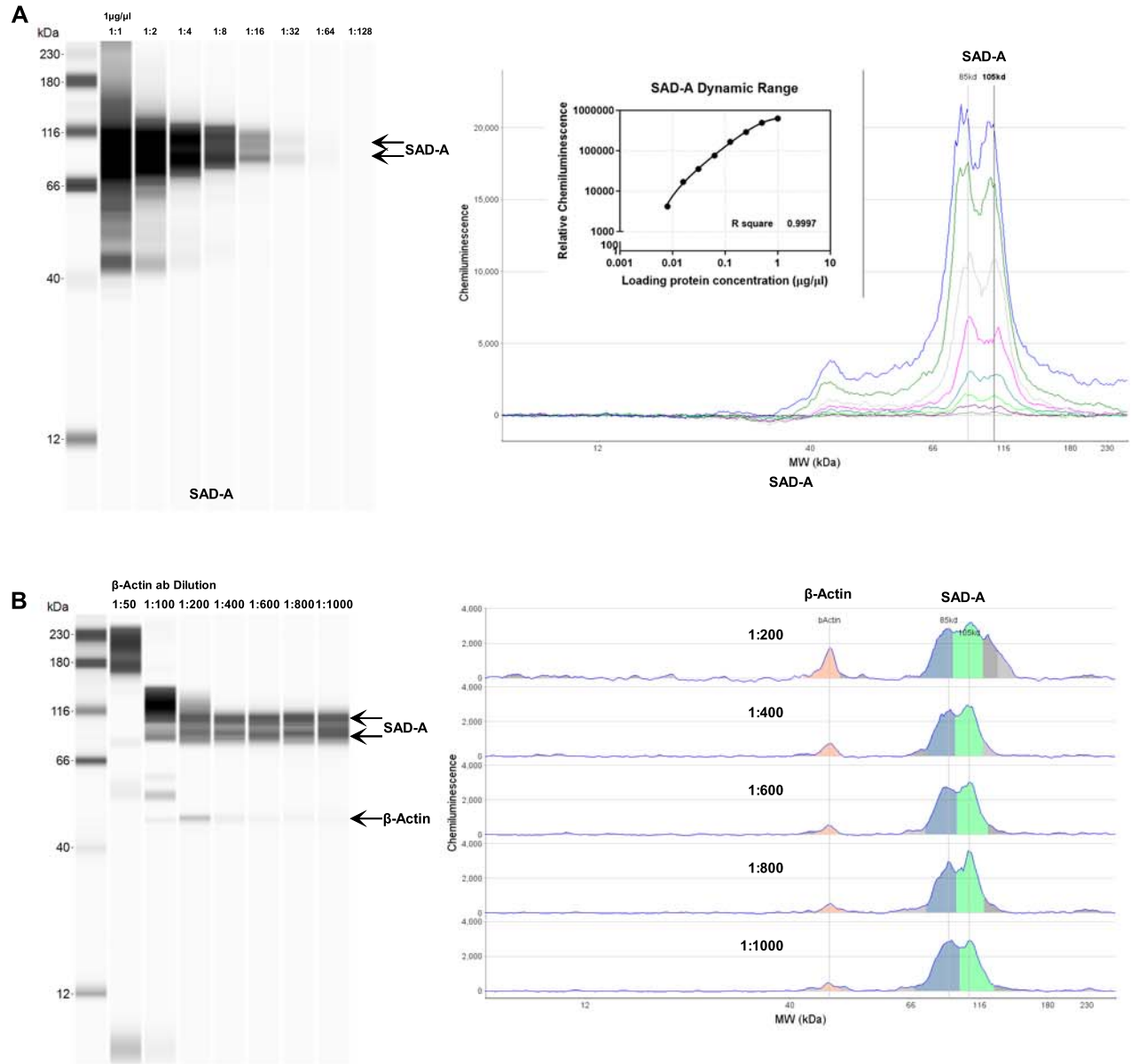


SUPPLEMENTARY MATERIALS

Supplemental Fig. 1



Supplemental Fig. 1

Detection of SAD-A (A), SAD-A and β -Actin (B) in capillary western blot (Wes) assay, using twofold dilutions of calibrator samples and serial dilution of antibody, respectively. Linear relationship between relative chemiluminescence of SAD-A (y axis) and loading protein concentration (x axis) could be got in Wes (embedded dot graph in right panels of (A)) assay by using serially twofold dilution of calibrator samples. The calibrator sample was obtained from INS-1 cell line. Capillary western blot results were shown as gel-like image view in left panel and electropherograms in right panel, showing decreasing intensities of bands and decreasing peak areas with serial dilutions of loading samples.