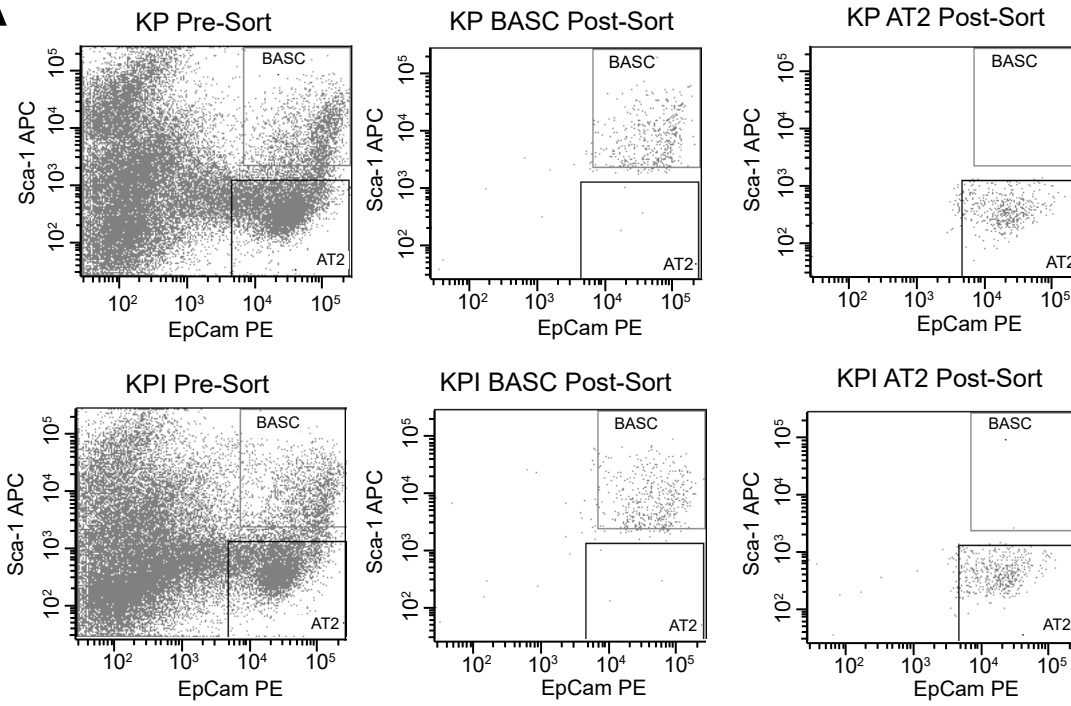
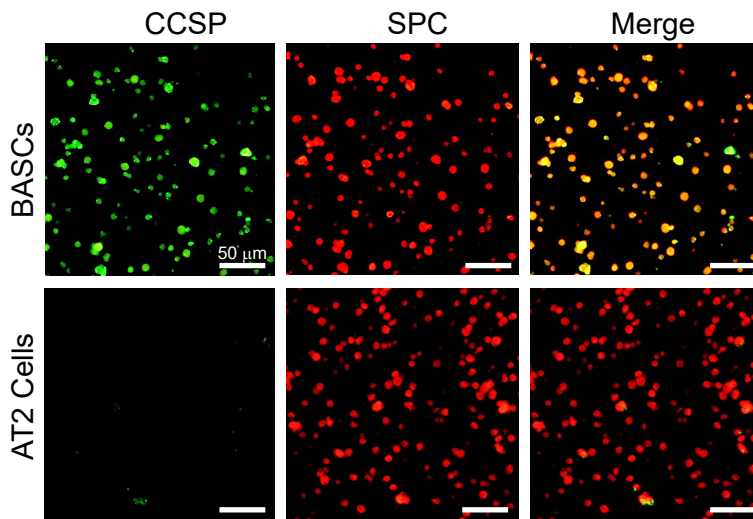
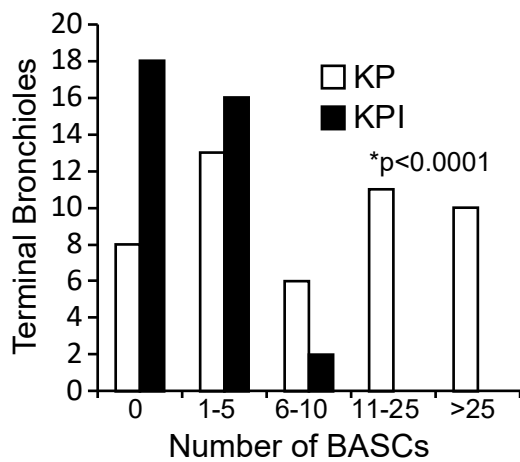


**A****B****C**

**Figure S1. Isolation and Characterization of Lung Epithelial Cells from KP and KPI Mice.** Related to Figure 4.

(A) Fluorescence activated cell sorting (FACS) analysis of lung epithelial cells from KP and KPI mice. Dual immunofluorescence cell sorting of BASC and AT2 cells from KP and KPI mice using Sca-1 and EpCam. Post-sort re-sorts demonstrate purity of cell populations.

(B) Immunofluorescence staining of purified BASC and AT2 cell populations from KP and KPI mice for CCSP (green) and SPC (red).

(C) Quantification of BASCs from KP and KPI mice. Results expressed as number of terminal bronchioles containing the indicated number of CCSP<sup>+</sup>/SPC<sup>+</sup> dual positive BASCs. n=6. \*p<0.0001 compared to KP using the Cochrane-Armitage test.

**Table S3. A list of primers used for mouse genomic PCR analysis (Related to STAR Methods)**

Primers	Sequence
Recombined <i>Kras</i> Forward	GGGTAGGTGTTGGGATAGCTG
Recombined <i>Kras</i> Reverse	TCCGAATTCAGTGACTACAGATGTACAGAG
Unrecombined <i>Kras</i> Forward	AGCTAGCCACCATGGCTTGAGTAAGTCTGCA
Unrecombined <i>Kras</i> Reverse	CCTTTACAAGCGCACGCAGACTGTAGA
Recombined <i>Trp53</i> Forward	GTCATTCACAGCAGTAACCTCCTGG
Recombined <i>Trp53</i> Reverse	CACAACGTGCACCACCACCACC
Unrecombined <i>Trp53</i> Forward	GAGGATTTGGGGAAGTTTGAAGCCTTC
Unrecombined <i>Trp53</i> Reverse	CCATCACCATGAGACAGGGTCTTGC
Recombined <i>Prkci</i> Forward	CACCAACGGGTTTGCTATCT
Recombined <i>Prkci</i> Reverse	CCAGCAAGACAAAACACCAA
Unrecombined <i>Prkci</i> Forward	CACCAACGGGTTTGCTATCT
Unrecombined <i>Prkci</i> Reverse	ATTACAGCAGGGCAAACCTGC