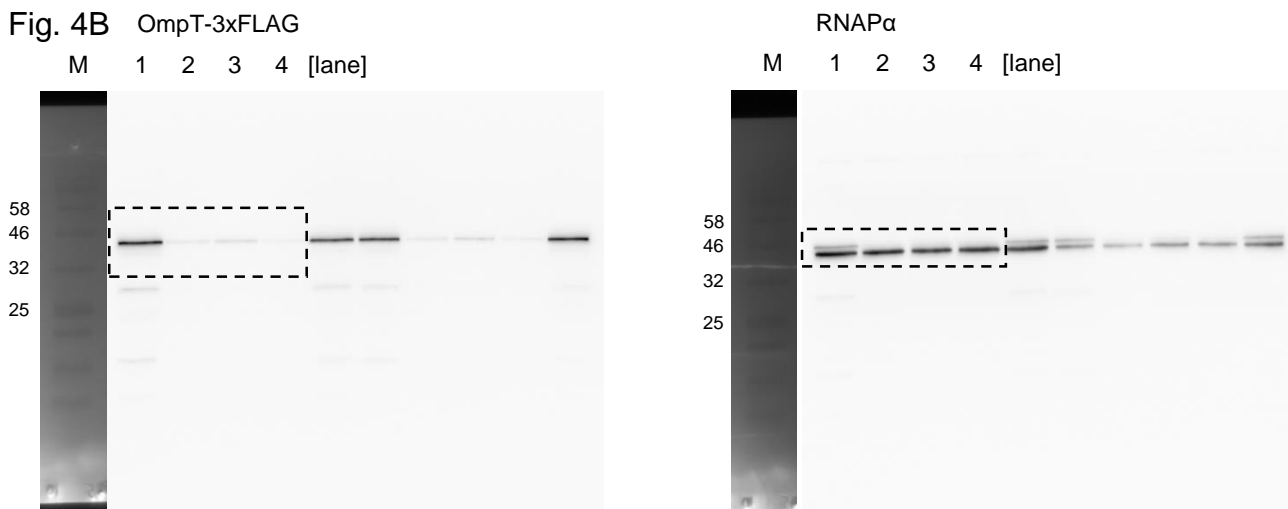


Source Data Fig.4

Fig. 4B OmpT-3xFLAG



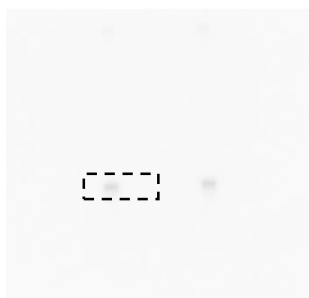
Quantification

OmpT		Lane 1		Lane 2		Lane 3		Lane 4	
Number	%	Volume	%	Volume	%	Volume	%	Volume	
No 1	100	8967656	8.532	765105	10.427	935042	4.779	428554	

RNAPα		Lane 1		Lane 2		Lane 3		Lane 4	
Number	%	Volume	%	Volume	%	Volume	%	Volume	
No 1	100	11111413	104.698	11633378	90.74	10082446	104.962	11662803	

KPO-820 MicV

1 2 3 4 [lane]



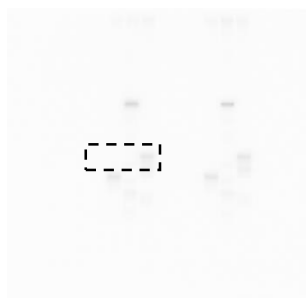
KPO-236 VrrA

1 2 3 4 [lane]



KPO-4356 RybB

1 2 3 4 [lane]



KPO-243 5S rRNA

1 2 3 4 [lane]

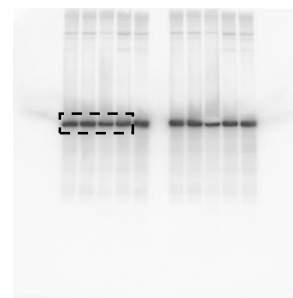
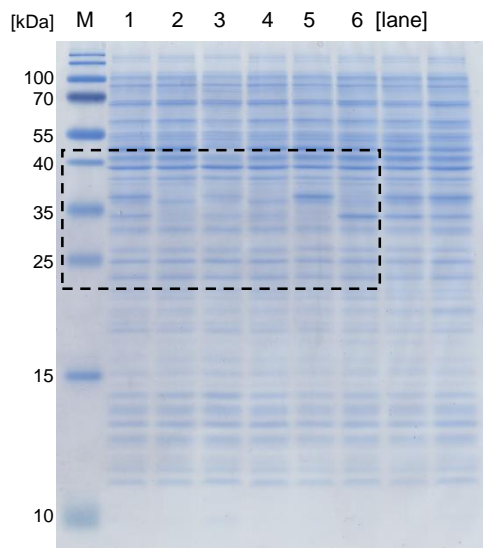
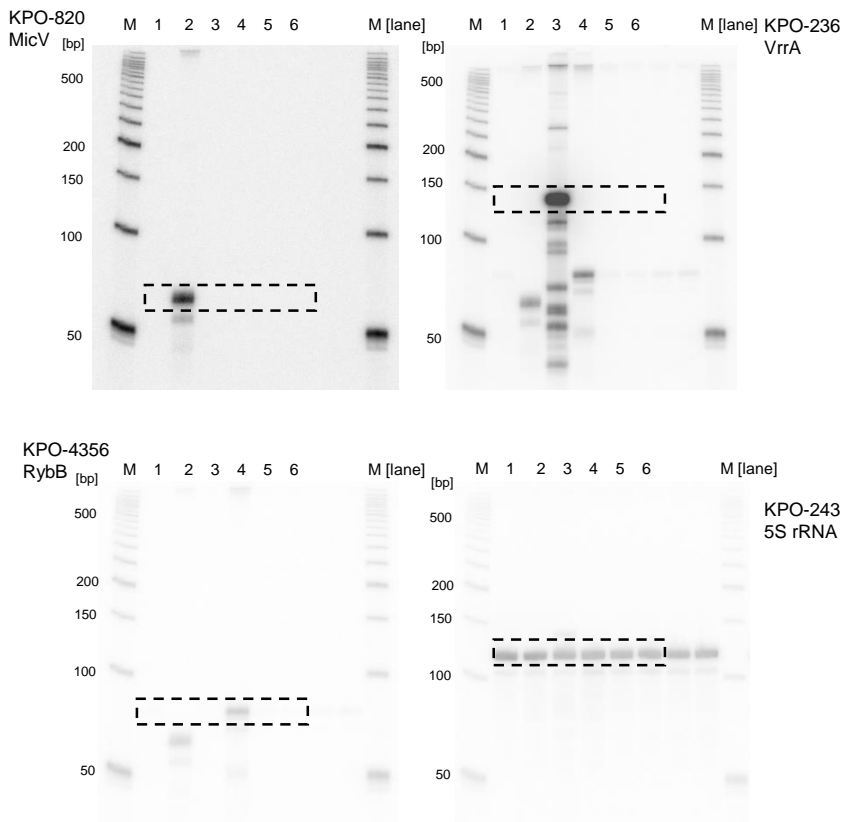


Fig. 4C

upper panel



lower panel



Source Data Fig.4

Fig. 4D

	WT pCtr		$\Delta rpoE$ pCtr		$\Delta rpoE$ pMicV		$\Delta rpoE$ pVrrA		$\Delta rpoE$ pRybB	
	CFU/ml	log10	CFU/ml	log10	CFU/ml	log10	CFU/ml	log10	CFU/ml	log10
Rep1	3916666666.67	9.59	37083.33	4.57	1591666666.67	8.20	1416666666.67	9.15	2003333333.33	9.30
Rep2	3300000000.00	9.52	27500.00	4.44	92500000.00	7.97	1200000000.00	9.08	1168333333.33	9.07
Rep3	2820833333.33	9.45	25416.67	4.41	46250000.00	7.67	1088333333.33	9.04	873333333.33	8.94
Rep4	3420833333.33	9.53	26250.00	4.42	38750000.00	7.59	1530000000.00	9.18	1368333333.33	9.14
Rep5	3983333333.33	9.60	56666.67	4.75	29583333.33	7.47	720000000.00	8.86	955000000.00	8.98
Rep6	3266666666.67	9.51	19583.33	4.29	32916666.67	7.52	1010000000.00	9.00	1398333333.33	9.15
Rep7	2041666666.67	9.31	21250.00	4.33	22500000.00	7.35	1101666666.67	9.04	1005000000.00	9.00
Rep8	2308333333.33	9.36	13333.33	4.12	59166666.67	7.77	1063333333.33	9.03	1245000000.00	9.10

Dataset 2: Related to Fig. 4D

Normality Test (Kolmogorov-Smirnov): Passed (P = 0.260)

Equal Variance Test (Brown-Forsythe): Passed (P = 0.094)

Group Name	N	Missing	Mean	Std Dev	SEM
WT pCtr	8	0	9.485	0.104	0.0368
$\Delta rpoE$ pCtr	8	0	4.416	0.187	0.0663
$\Delta rpoE$ pMicV	8	0	7.692	0.280	0.0989
$\Delta rpoE$ pVrrA	8	0	9.048	0.099	0.0352
$\Delta rpoE$ pRybB	8	0	9.084	0.115	0.0406

Source of Variation	DF	SS	MS	F	P
Between Groups	4	139.214	34.803	1181.418	<0.001
Residual	35	1.031	0.0295		
Total	39	140.245			

The differences in the mean values among the treatment groups are greater than would be expected by chance; there is a statistically significant difference (P = <0.001).

Power of performed test with alpha = 0.050: 1.000

All Pairwise Multiple Comparison Procedures (Holm-Sidak method):
Overall significance level = 0.05

Comparison	Diff of Means	t	P	P<0.050
WT pCtr vs. $\Delta rpoE$ pCtr	5.069	59.069	<0.001	Yes
$\Delta rpoE$ pRybB vs. $\Delta rpoE$ pCtr	4.667	54.387	<0.001	Yes
$\Delta rpoE$ pVrrA vs. $\Delta rpoE$ pCtr	4.632	53.969	<0.001	Yes
$\Delta rpoE$ pMicV vs. $\Delta rpoE$ pCtr	3.275	38.168	<0.001	Yes
WT pCtr vs. $\Delta rpoE$ pMicV	1.794	20.901	<0.001	Yes
$\Delta rpoE$ pRybB vs. $\Delta rpoE$ pMicV	1.392	16.220	<0.001	Yes
$\Delta rpoE$ pVrrA vs. $\Delta rpoE$ pMicV	1.356	15.801	<0.001	Yes
WT pCtr vs. $\Delta rpoE$ pVrrA	0.438	5.100	<0.001	Yes
WT pCtr vs. $\Delta rpoE$ pRybB	0.402	4.681	<0.001	Yes
$\Delta rpoE$ pRybB vs. $\Delta rpoE$ pVrrA	0.036	0.419	0.678	No