

Source Data Fig.6

Fig. 6A

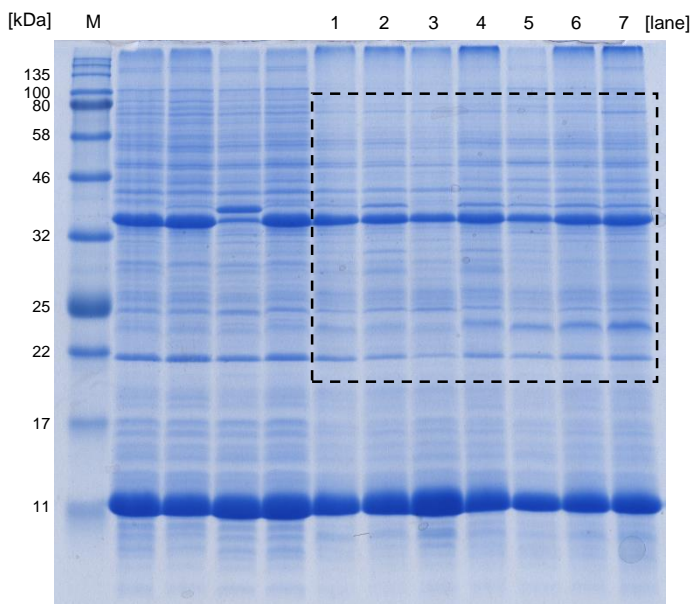
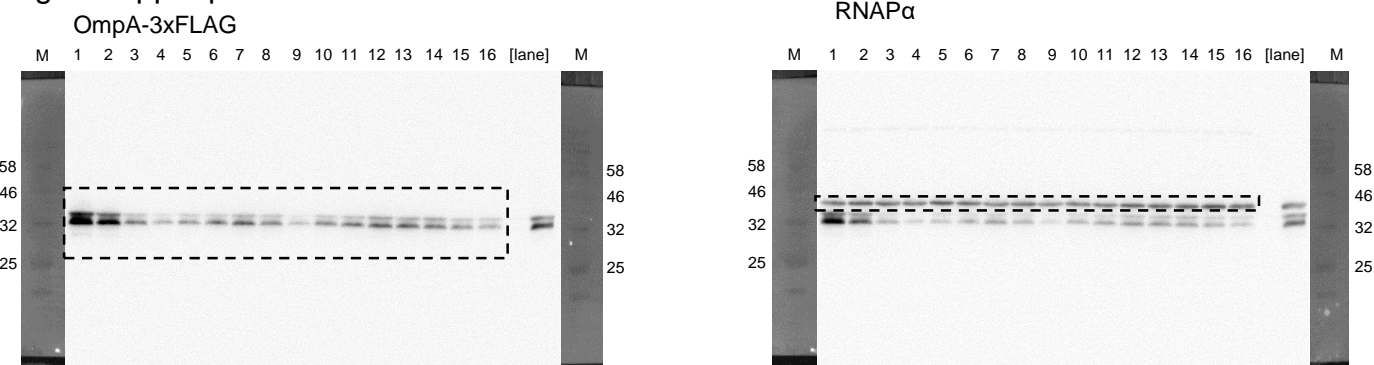


Fig. 6B upper panel

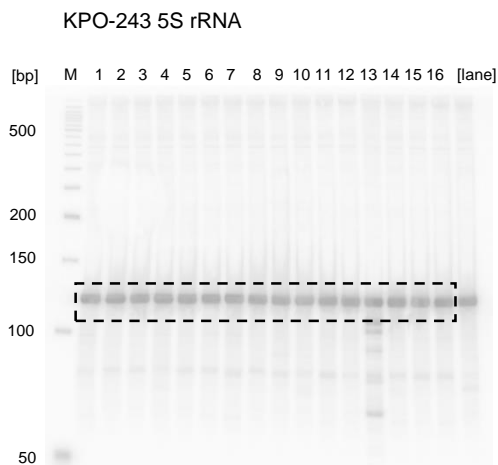
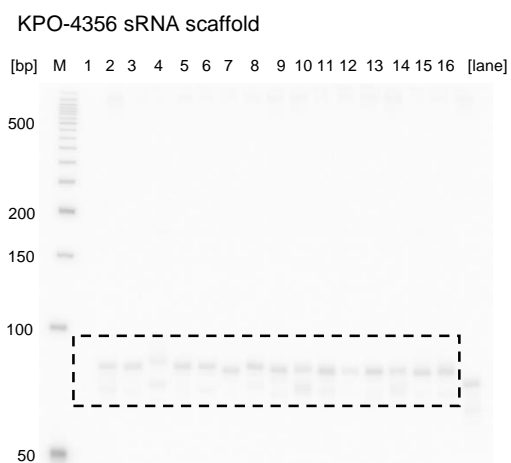


Quantification

OmpA	lane1	lane2	lane3	lane4	lane5	lane6	lane7	lane8	lane9	lane10	lane11	lane12	lane13	lane14	lane15	lane16
Number	Volume	Volume	Volume	Volume	Volume	Volume	Volume	Volume	Volume	Volume	Volume	Volume	Volume	Volume	Volume	Volume
up band	52768377	34048097	7554419	3609262	6581388	7213800	10648745	6940473	2789435	7763702	8617079	15071976	11922181	15598878	9411721	8243885
low band	158681861	94722892	35577505	14810754	21645975	33124989	39575529	30050775	11528871	28032184	34999919	43110794	44688839	32508411	24436555	16336135

RNAPα	lane1	lane2	lane3	lane4	lane5	lane6	lane7	lane8	lane9	lane10	lane11	lane12	lane13	lane14	lane15	lane16
No 1	48022759	43832738	36451715	32604945	40608606	37209394	30759478	35950173	43531892	56014643	31998509	63240067	39015650	60238070	68396535	38832824

Fig. 6B lower panel



Source Data Fig.6

Fig. 6C

Data are: (fluorescence / OD600) - autofluorescence

	Rep1	Rep2	Rep3
pCtr	170078	162994	145341
pVar1	91176	89315	93287
pVar2	49919	48831	48085
pVar3	16461	14660	14636
pVar4	33685	39459	36975
pVar5	24530	26449	23286
pVar6	48263	54838	55401
pVar7	63041	51850	63674
pVar8	28661	26984	25053
pVar9	40006	51839	36659
pVar10	47150	56919	53912
pVar11	71370	81742	74400
pVar12	41235	45611	47370
pVar13	77257	75471	74435
pVar14	44405	38854	38088
pVar15	10687	11060	11212

Fig. 6D

	WT pCtr		$\Delta rpoE$ pCtr		$\Delta rpoE \Delta ompA$ pCtr		$\Delta ompA$ pCtr	
	CFU/ml	log10	CFU/ml	log10	CFU/ml	log10	CFU/ml	log10
Rep1	2162500000.00	9.33	93750.00	4.97	887500000.00	8.95	2716666666.67	9.43
Rep2	2716666666.67	9.43	19166.67	4.28	620833333.33	8.79	3025000000.00	9.48
Rep3	1970833333.33	9.29	35000.00	4.54	587500000.00	8.77	2966666666.67	9.47
Rep4	2062500000.00	9.31	20000.00	4.30	958333333.33	8.98	3166666666.67	9.50
Rep5	1991666666.67	9.30	20416.67	4.31	454166666.67	8.66	3470833333.33	9.54
Rep6	1937500000.00	9.29	10833.33	4.03	558333333.33	8.75	2875000000.00	9.46
Rep7	2908333333.33	9.46	9166.67	3.96	333333333.33	8.52	2066666666.67	9.32
Rep8	2241666666.67	9.35	18750.00	4.27	291666666.67	8.46	1908333333.33	9.28

Dataset 3: Related to Fig. 6D

Normality Test (Kolmogorov-Smirnov): Passed (P = 0.054)

Equal Variance Test (Brown-Forsythe): Passed (P = 0.135)

Group Name	N	Missing	Mean	Std Dev	SEM
WT	8	0	9.347	0.067	0.024
$\Delta rpoE$	8	0	4.335	0.313	0.111
$\Delta rpoE \Delta ompA$	8	0	8.735	0.183	0.065
$\Delta ompA$	8	0	9.435	0.091	0.032

Source of Variation	DF	SS	MS	F	P
Between Groups	3	142.749	47.583	1318.582	<0.001
Residual	28	1.010	0.036		
Total	31	143.759			

The differences in the mean values among the treatment groups are greater than would be expected by chance; there is a statistically significant difference (P = <0.001).

Power of performed test with alpha = 0.050: 1.000

All Pairwise Multiple Comparison Procedures (Holm-Sidak method):
Overall significance level = 0.05

Comparisons for factor:

Comparison	Diff of Means	t	P	P<0.050
$\Delta ompA$ vs. $\Delta rpoE$	5.100	53.698	<0.001	Yes
WT vs. $\Delta rpoE$	5.012	52.772	<0.001	Yes
$\Delta rpoE \Delta ompA$ vs. $\Delta rpoE$	4.400	46.330	<0.001	Yes
$\Delta ompA$ vs. $\Delta rpoE \Delta ompA$	0.700	7.369	<0.001	Yes
WT vs. $\Delta rpoE \Delta ompA$	0.612	6.442	<0.001	Yes
$\Delta ompA$ vs. WT	0.088	0.926	0.362	No