

Fig 4 A

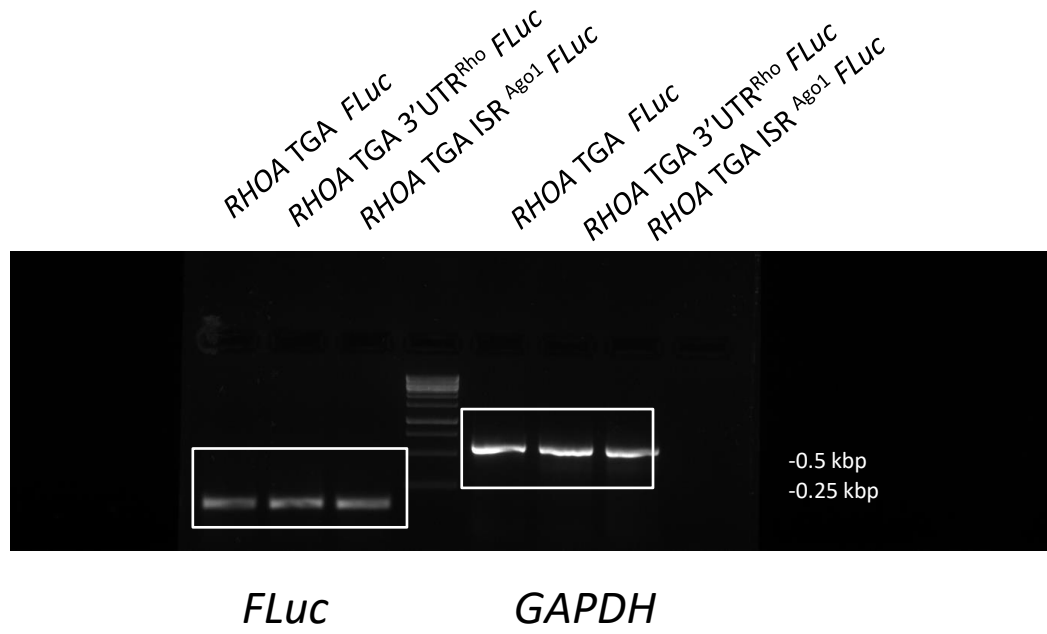
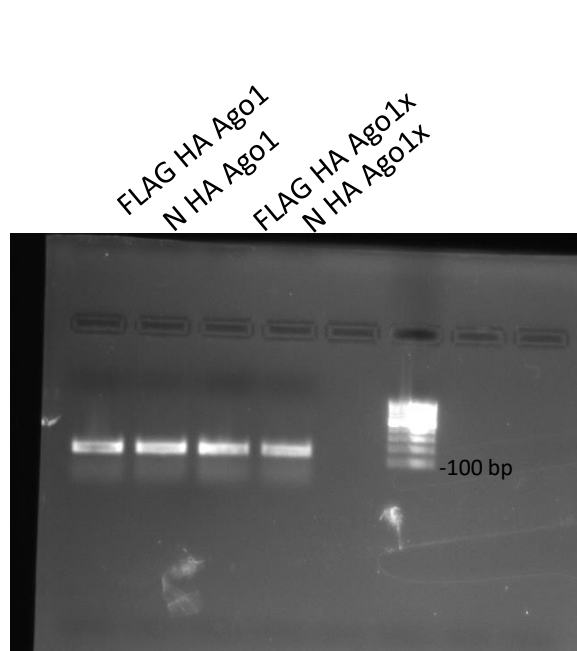
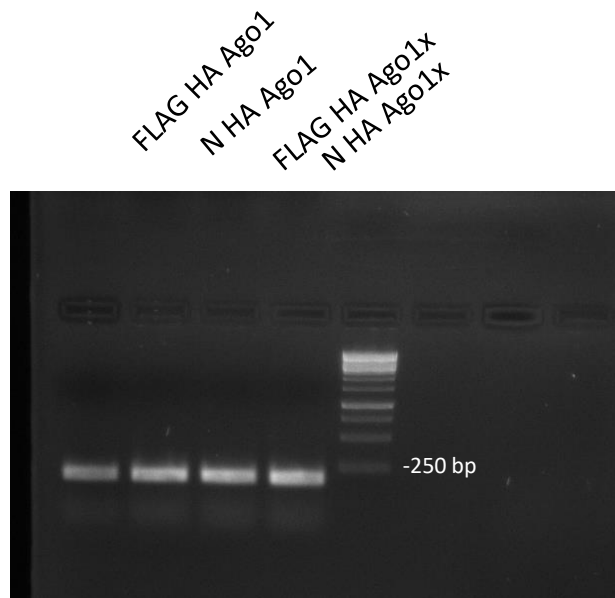


Fig 4 C



FLuc



Actin

FIG_4_A						
	Fluc/Rluc	Average	SEM			
RHOA TGA Fluc	3.67688E-05	3.40642E-05	8.18E-06			
	1.87463E-05					
	4.66775E-05					
RHOA TGA 3'UTR RHO Fluc	3.19249E-05	4.20164E-05	1.09E-05			
	3.03944E-05					
	6.37298E-05					
RHOA TGA ISR AGO1 Fluc	0.000258907	0.000254826	2.79E-06		P-value:	<0.0001
	0.000256071					
	0.000249501					

FIG_4_B						
in vitro translation						
		Fluc/Rluc	Average	SEM		
Rluc TAA non-specific Fluc	0.001355	0.001301	3.40E-05			
	0.001308					
	0.001238					
Rluc TAA ISR Fluc	0.008087	0.007289	4.14E-04		P-value:	0.0001
	0.007081					
	0.0067					
Rluc TCA ISR Fluc	0.084791	0.082046	6.17E-03			
	0.070251					
	0.091096					
transfection						
		Fluc/Rluc	Average	SEM		
Rluc TAA non-specific Fluc	0.0044	0.004848	8.06E-04			
	0.006412					
	0.003731					
Rluc TAA ISR Fluc	0.011739	0.013515	1.39E-03			
	0.01625				P-value:	0.006
	0.012556					
Rluc TCA ISR Fluc	0.209804	0.200688	0.0181			
	0.226506					
	0.165753					

FIG_4_C						
	Fluc/Rluc	Average	SEM			
nha ago1	0.00092	0.000843	1.19E-04			
	0.001					
	0.000609					
	Fluc/Rluc	Average	SEM			
nha ago1x	0.000506	0.000389	6.49E-05			
	0.00038					
	0.000282					
	Fluc/Rluc	Average	SEM			
flag ha ago1	0.000347	0.00036	1.20E-05			
	0.000384			P-value:	0.016	
	0.000348					
	Fluc/Rluc	Average	SEM			
fha ago1x	4.77E-05	5.98E-05	6.25E-06			
	6.85E-05			P-value:	0.0355	
	6.33E-05				with welch correction	