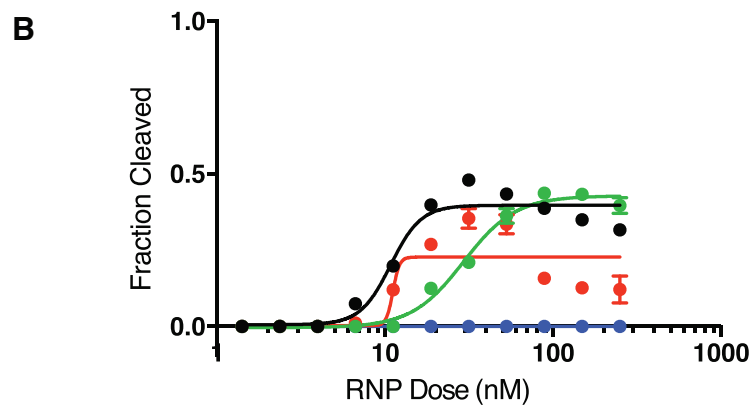


	Sequence	BLT cleavage efficiency	$A_{\max}$
● On-target	GGGTGAGTGAGTGTGTGCGTG	0.98	0.87
● Off-target 1	GGGT <b>A</b> AGTGAGTGTG <b>A</b> GCGTG	0.97	0.93
● Off-target 2	GGGTGA <b>T</b> TGA <b>T</b> TGTGTGCGTG	0.50	0.23
● Off-target 3	GGGTGAGTGAGTGTG <b>GGC</b> CTG	0.05	0.04



	Sequence	BLT cleavage efficiency	$A_{\max}$
● On-target	GGCCTCCCCAAAGCCTGGCCA	0.43	0.40
● Off-target 1	GG <b>G</b> CTCCCCAAAGC <b>T</b> TGGCCA	0.69	0.43
● Off-target 2	GGC <b>T</b> TC <b>T</b> CAAAGCCTGGCCA	0.29	0.23
● Off-target 3	GGCCT <b>GCG</b> CAAAGCCTGGCCA	0.08	0.00

**SUPPLEMENTARY FIG. S2.** Individual templates validate library results in biochemical cleavage assays. **(A)** Three representative doubly mismatched targets were subjected to increasing doses of VEGFA Cas9 RNP. Rank ordering of the cleavage efficiency in individual testing is consistent with BLT-measured results.  $A_{\max}$  represents the maximum sigmoidal fitted cleavage efficiency. **(B)** Representative doubly mismatched targets from EMX1 off-target data were subjected to increasing doses of Cas9 RNP.