

Optimizing Ultrasound-Assisted Deep Eutectic Solvent Extraction of Bioactive Compounds from Chinese Wild Rice

Jia Zeng ^{1,2,†}, Yuqing Dou ^{1,†}, Ning Yan ¹, Na Li ^{1,2}, Huaibao Zhang ^{1,*} and Jia-Neng Tan ^{1,3,*}

¹ Tobacco Research Institute of Chinese Academy of Agricultural Sciences, Qingdao 266101, China

² Graduate School of Chinese Academy of Agricultural Sciences, Beijing 100081, China

³ Key Laboratory of Oilseeds Processing, Ministry of Agriculture, Wuhan 430062, China

* Correspondence: zhanghuaibao@caas.cn (H.Z.); tanjianeng@caas.cn (J.-N.T.); Tel.: +86-532-8870-2052; Fax: +86-532-8870-2239 (H.Z.)

† These authors contributed equally to this work.

Table S1

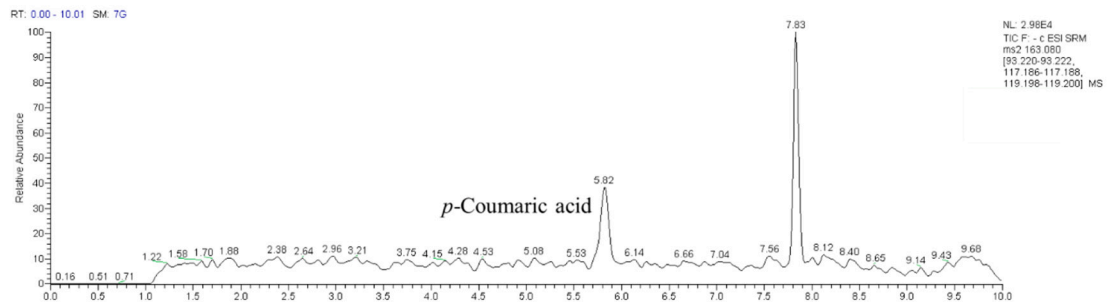
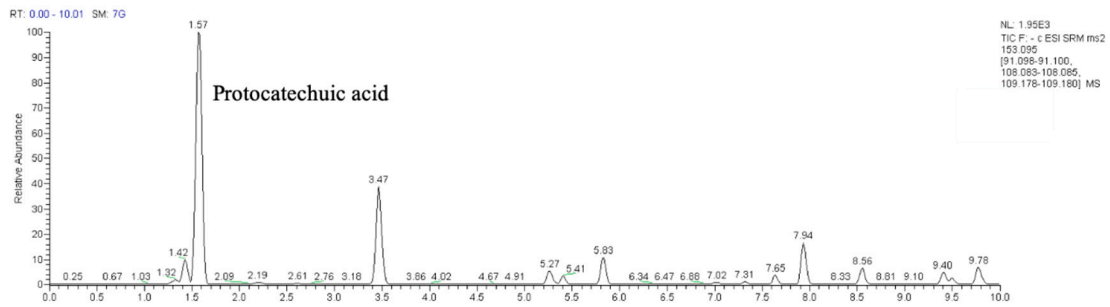
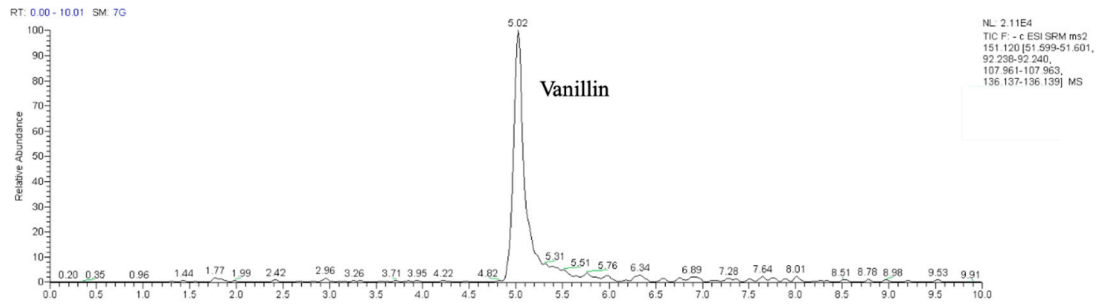
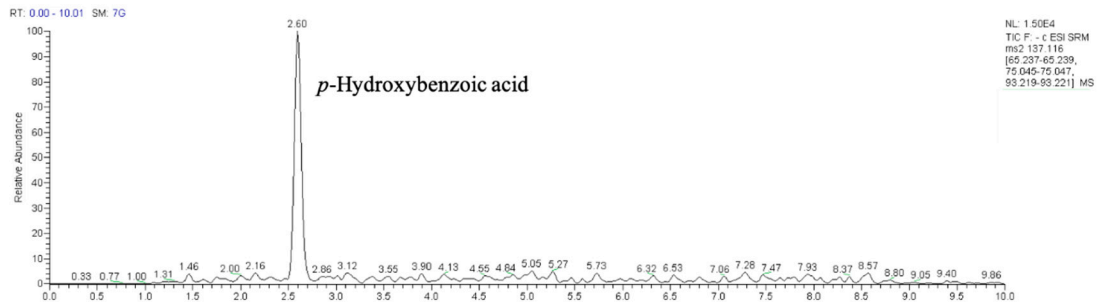
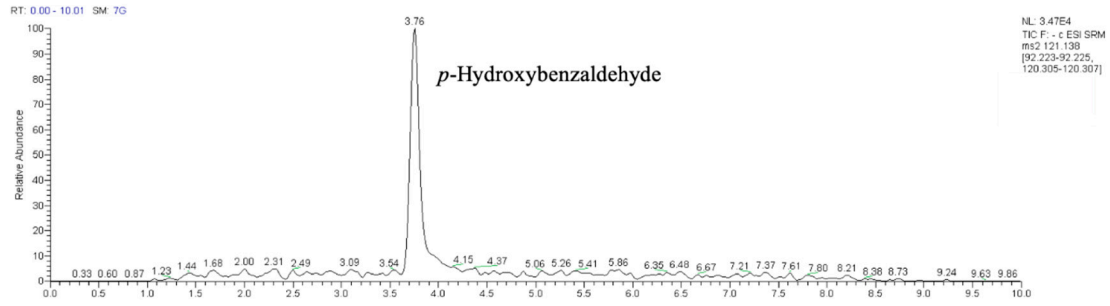
Parameters of linear regression, concentration rang, LOD and LOQ of the analyzed standards.

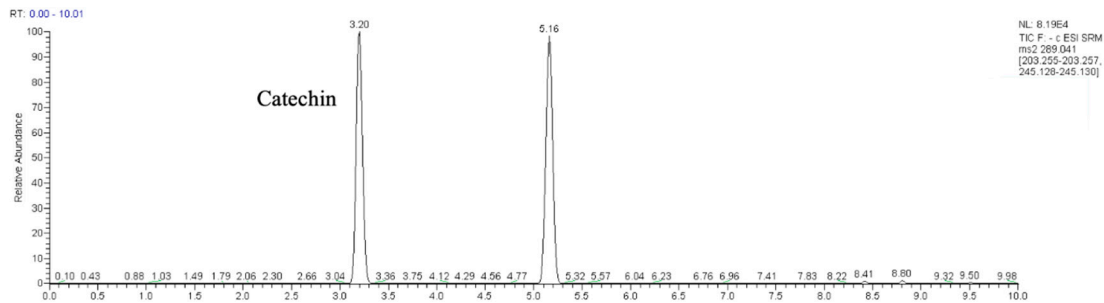
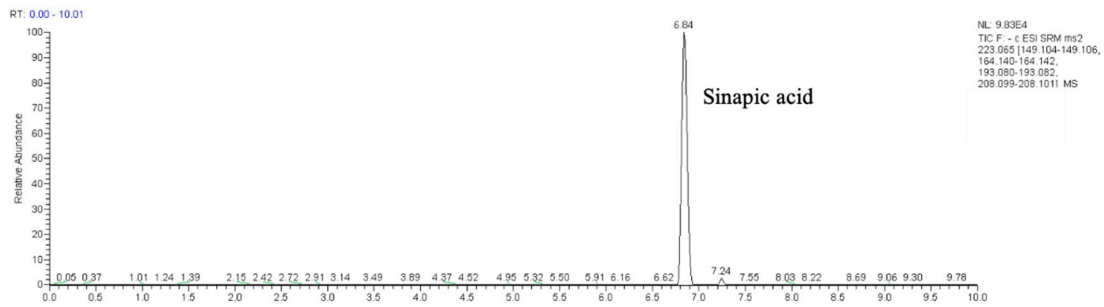
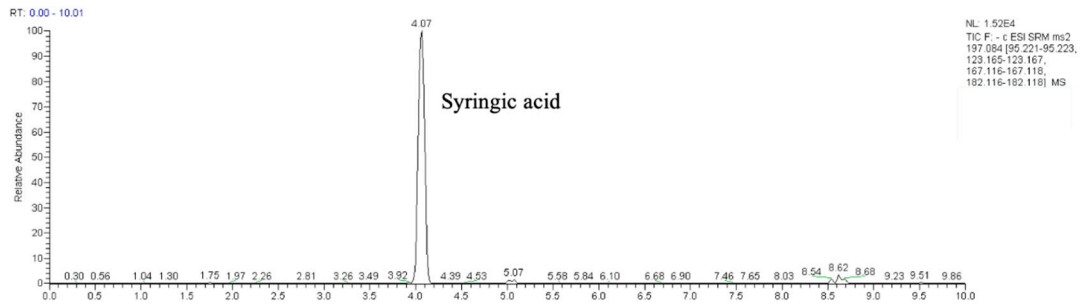
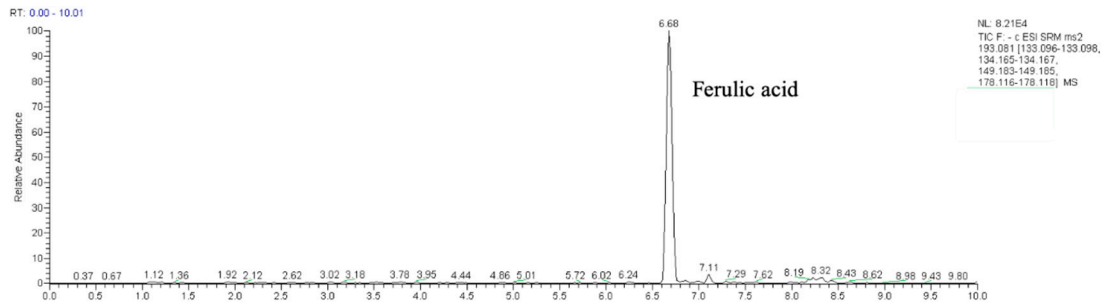
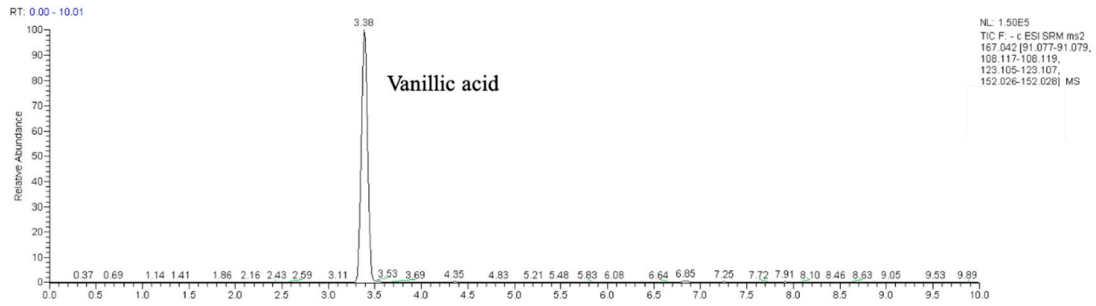
standards	Regression equation	Concentration rang (µg/g)	R ²	LOD (ng/mL)	LOQ (ng/mL)
Vanillin	y = 330396x + 58002.6	0.30–30	0.9972	7.073	23.278
<i>p</i> -Hydroxybenzaldehyde	y = 37875x + 10863.4	0.2–20	0.9992	1.493	6.563
<i>p</i> -Hydroxybenzoic acid	y = 195770x + 3998.1	0.2–20	0.9993	6.374	22.570
<i>p</i> -Coumaric acid	y = 627355x + 29881.7	0.05–5	0.9995	3.547	13.621
Protocatechuic acid	y = 32574x + 424.713	0.2–20	0.9998	1.348	5.704
Syringic acid	y = 16972x + 12950.9	0.02–10	0.9989	7.469	25.581
Ferulic acid	y = 18581.6x – 40196.1	0.5–120	0.9944	3.241	10.834
Sinapic acid	y = 222815x + 65084	0.5–120	0.9995	4.684	15.302
Vanillic acid	y = 341171x – 73698.3	0.2–20	0.9921	7.561	16.320
Catechin	y = 39552.9x – 23122.9	0.5–25	0.9998	9.747	30.422
Procyanidin B1	y = 29832.4x – 16919.9	0.5–20	0.9985	4.360	14.071
Quercetin	y = 235670x – 42503	0.5–20	0.9924	0.479	2.690

The Regression equation was constructed by plotting the peak area versus the concentration of each standard. LOD, limits of detection. LOQ, limits of quantification.

Fig. S1

The UPLC-MS/MS TIC spectrum of the standards.





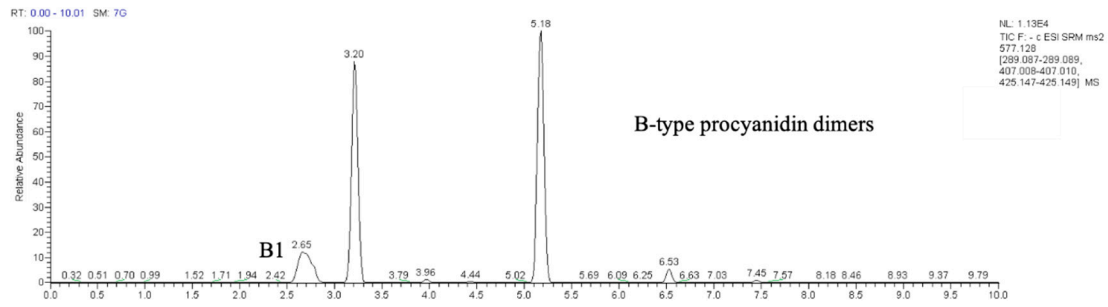
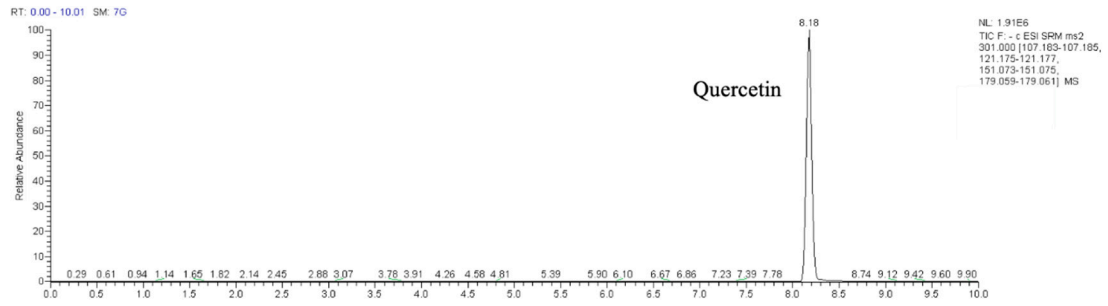
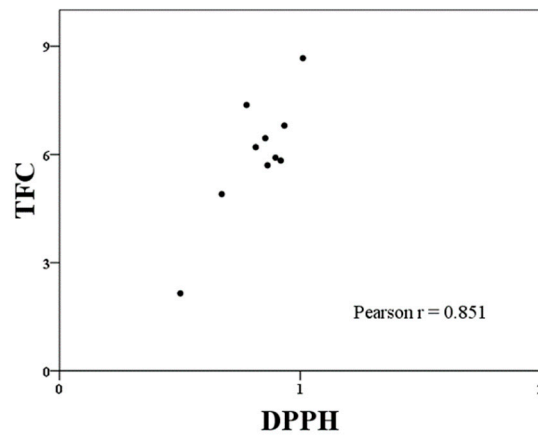


Fig.S2

Correlations between (a) TFC and DPPH assay results, (b) TFC and ABTS assay results.

(a)



(b)

