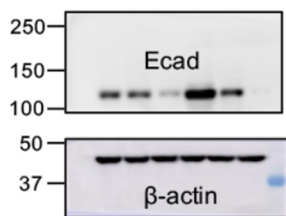
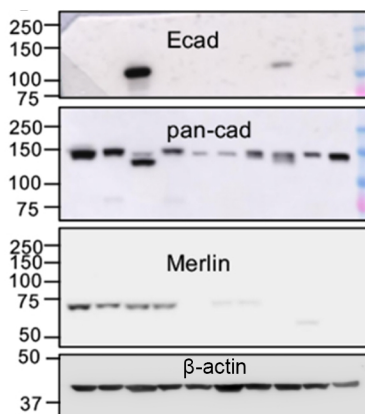
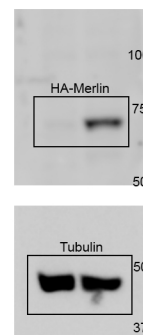


1f

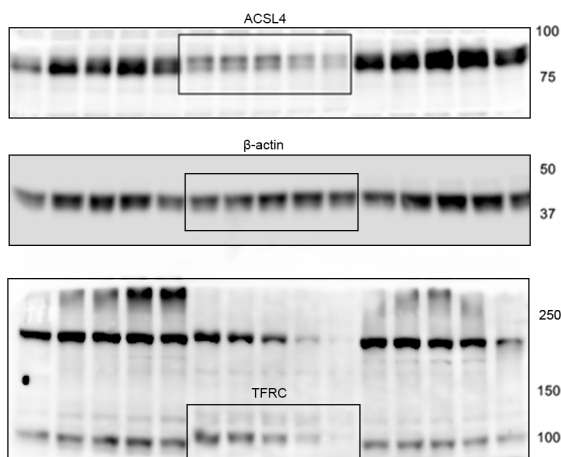
β -actin, loading control, same gel as Ecad.

2a

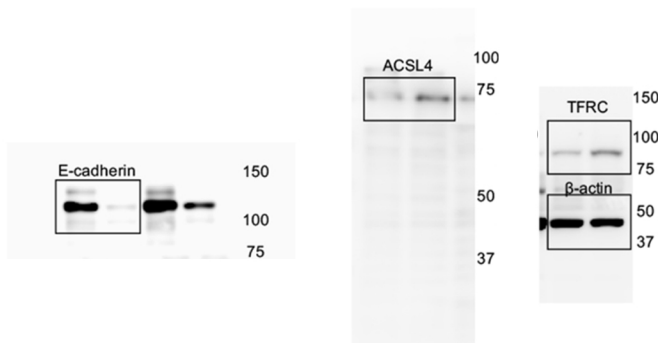
β -actin, technical control. All four proteins were blotted using the same samples run on separate gels.

2f

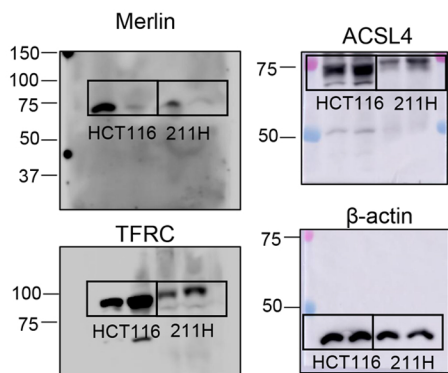
Tubulin, loading control, same gel as HA-Merlin.

3e

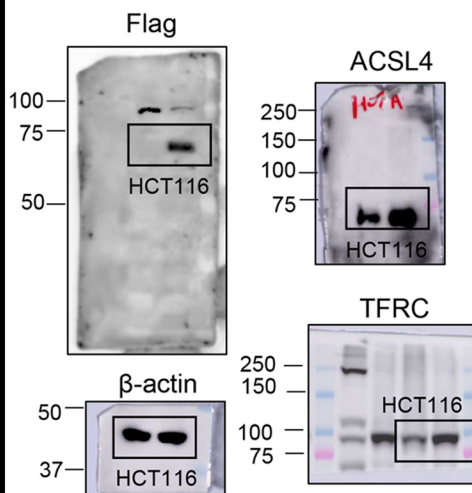
β -actin, loading control run on the same gel as ACSL4; the same samples were blotted for TFRC on a separate gel.

3f

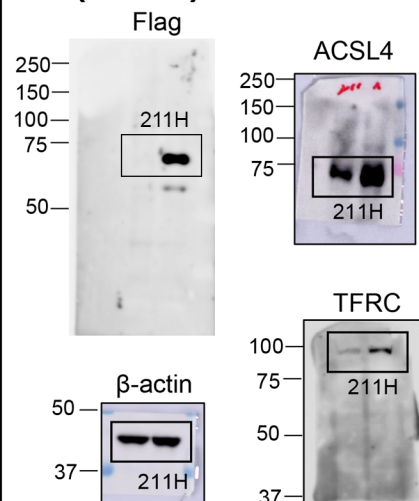
β -actin, loading control run on the same gel as TFRC; the same samples were blotted on separate gels for ACSL4 and E-cadherin.

3g

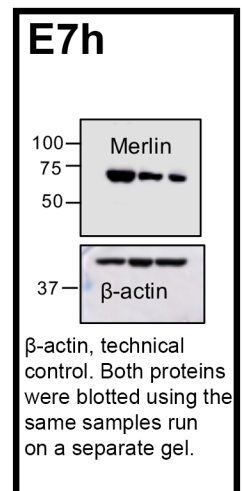
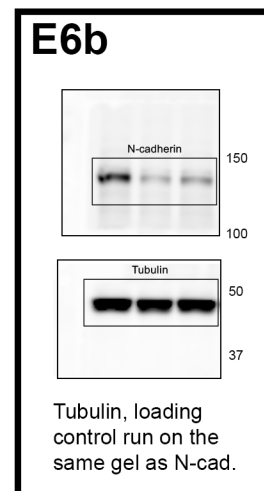
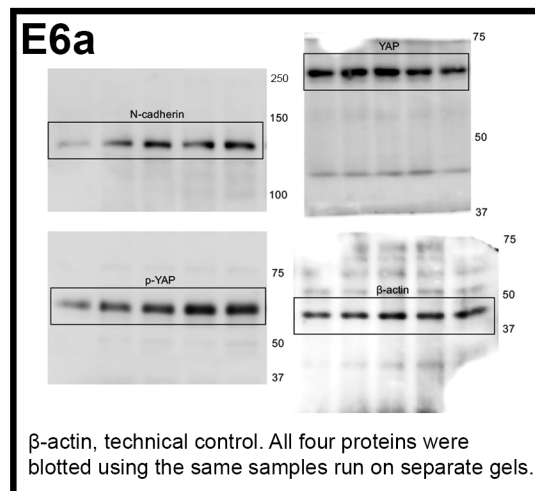
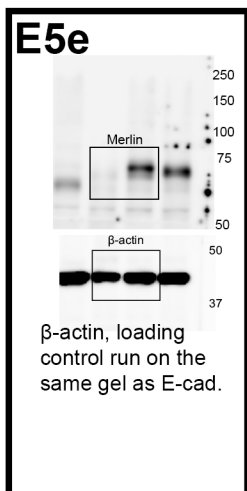
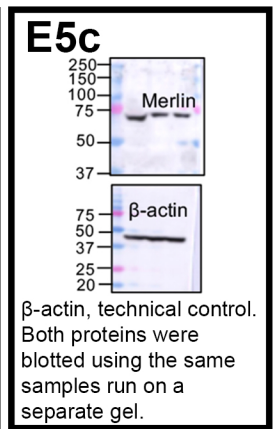
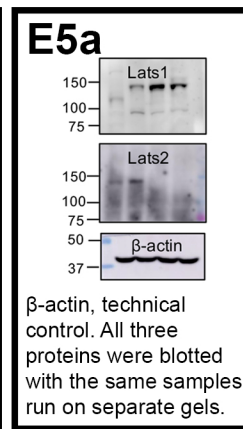
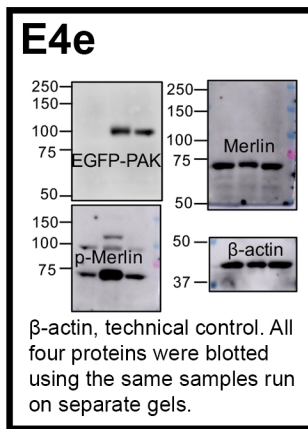
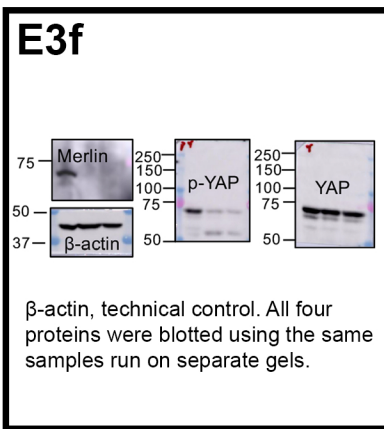
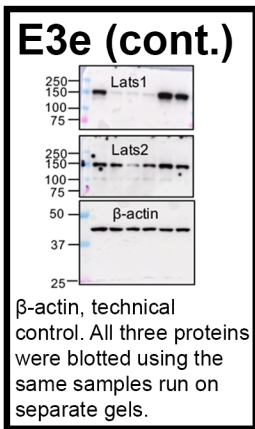
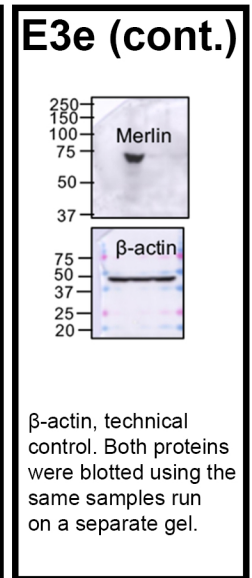
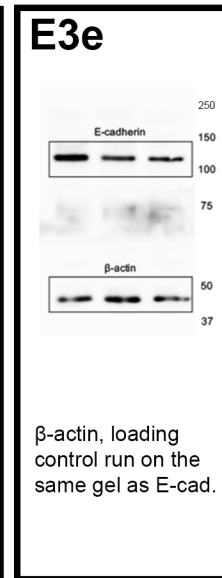
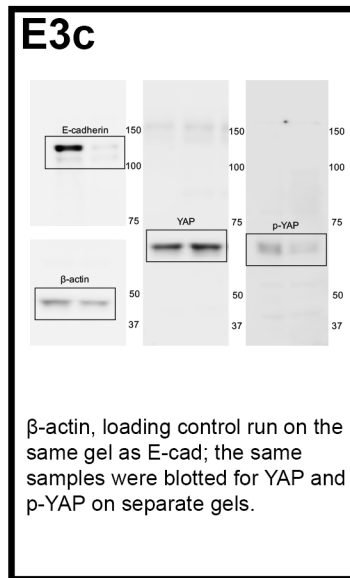
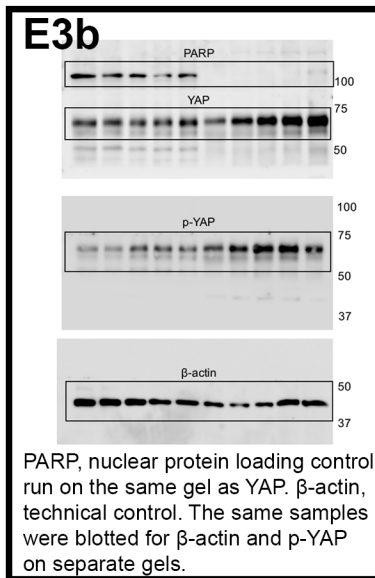
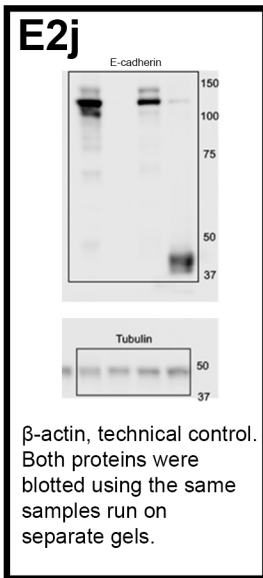
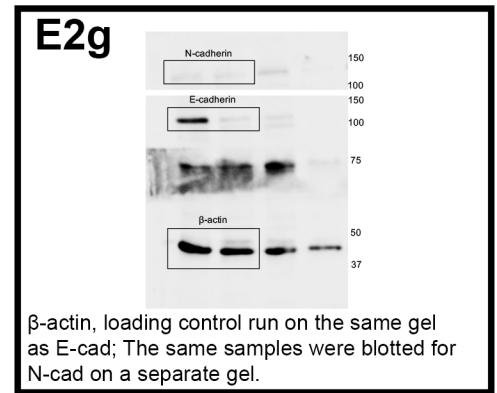
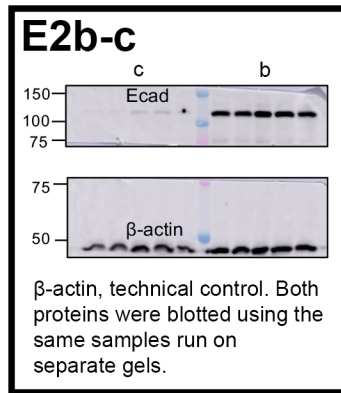
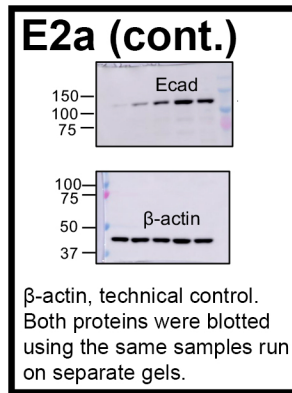
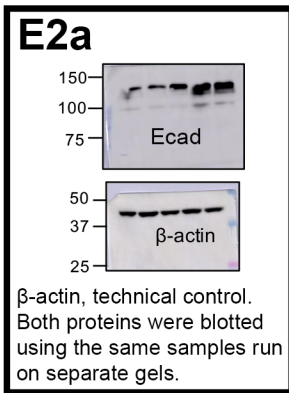
β -actin, technical control. All four proteins were blotted using the same samples run on separate gels.

3h

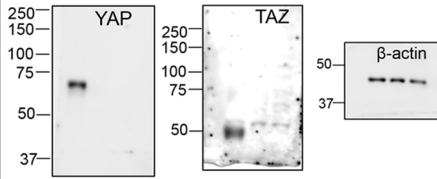
β -actin, technical control. All four proteins were blotted using the same samples run on separate gels.

3h (cont.)

β -actin, technical control. All four proteins were blotted using the same samples run on separate gels.

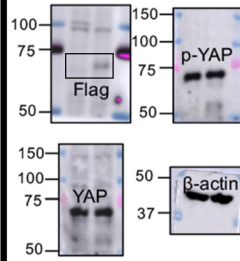


E7I



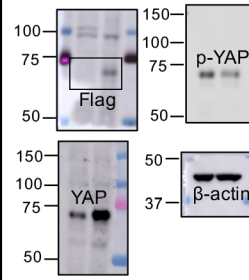
β-actin, technical control. All three proteins were blotted using the same samples run on separate gels.

E8a



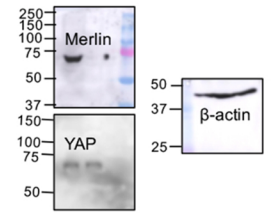
β-actin, technical control. All four proteins were blotted using the same samples run on separate gels.

E8f



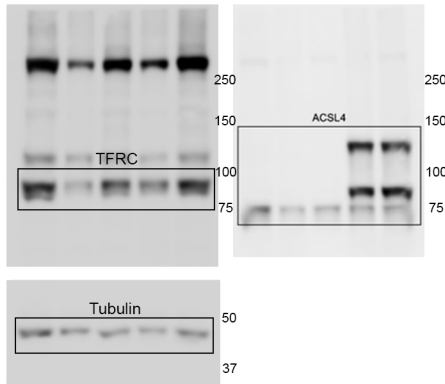
β-actin, technical control. All four proteins were blotted using the same samples run on separate gels.

E8I



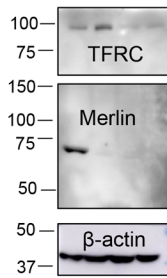
β-actin, technical control. All three proteins were blotted using the same samples run on separate gels.

E8m



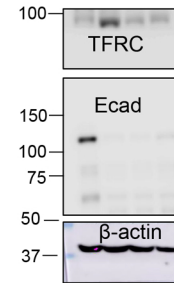
β-actin, loading control run on the same gel as TFRC; the same samples were blotted for ACSL4 on a separate gel.

E8o



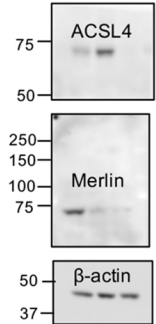
β-actin, technical control. All three proteins were blotted using the same samples run on separate gels.

E8p



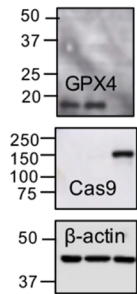
β-actin, technical control. All three proteins were blotted using the same samples run on separate gels.

E8r



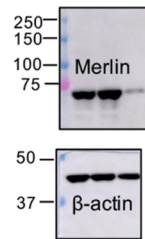
β-actin, technical control. All three proteins were blotted using the same samples run on separate gels.

E9a



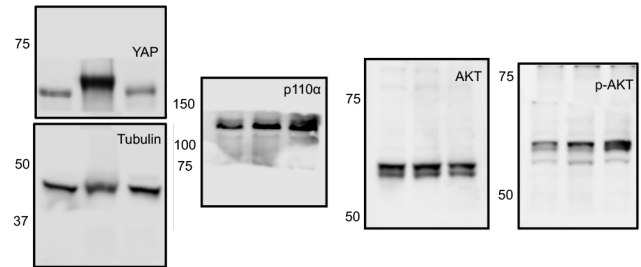
β-actin, technical control. All three proteins were blotted using the same samples run on separate gels.

E9a (cont.)



β-actin, loading control run on the same gel as Merlin.

E10k



Tubulin, loading control run on the same gel as YAP. The same samples were blotted for p110α, AKT, and p-AKT on separate gels.