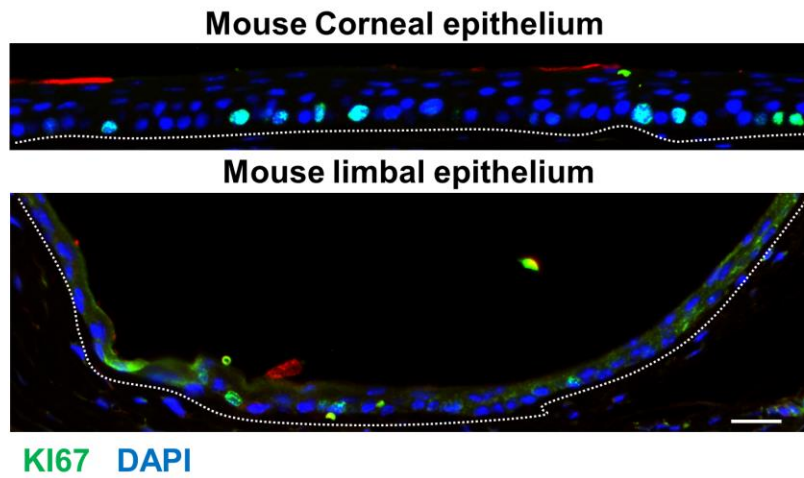


Supplementary Figure S3



Supplementary Figure S3. Immunofluorescence staining with KI67 antibody in a frozen section of mouse limbal and corneal epithelium. KI67 was strongly localized in the nuclei of cells in the corneal epithelial basal layer compared to basal cells in the limbal epithelium. Scale bar= 20 μ m. Dotted lines mark the basement membrane. N=5.