

SUPPLEMENTARY DATA

**\*eTable S1.** Geometric means (GMs) and inter-quartile range (IQR) of plasma perfluoroalkyl and polyfluoroalkyl substances (PFASs) concentration measured at baseline and 2-years post-randomization and spearman correlations ( $r_s$ ) between baseline and year-2 concentrations in the Diabetes Prevention Program (DPP); N=957.

PFAS biomarkers	Chemical Name	Baseline		Year-2		Spearman correlation
		<LOD n (%)	GM (IQR) ng/mL	<LOD n (%)	GM (IQR) ng/mL	$r_s$
<b>Sum PFAS</b>	Sum PFASs	0	38.43 (28.60)	0	41.12 (27.1)	0.92
<b>PFOS</b>	Perfluorooctane sulfonic acid	0	26.38 (22.80)	0	28.13 (19.2)	0.69
<b>n-PFOS</b>	Linear perfluorooctane sulfonic acid	0	18.42 (16.9)	0	20.39 (14.6)	0.67
<b>Sm-PFOS</b>	Perfluoromethylheptane sulfonic acids	0	7.32 (6.50)	0	7.35 (5.6)	0.60
<b>Sm2-PFOS</b>	Perfluorodimethylhexane sulfonic acids	564 (58.9%)	0.13 (0.23)	557 (58.2%)	0.13 (0.23)	0.33
<b>PFOA</b>	Perfluorooctanoic acid	0	4.82 (3.20)	0	5.77 (4.0)	0.68
<b>n-PFOA</b>	Linear perfluorooctanoic acid	0	4.29 (2.90)	0	4.85 (3.0)	0.74
<b>Sb-PFOA</b>	Branched perfluorooctanoic acids	159 (16.6%)	0.44 (0.50)	101 (10.6%)	0.61 (0.8)	0.49
<b>PFHxS</b>	Perfluorohexane sulfonic acid	1 (0.1%)	2.41 (2.40)	9 (0.9%)	2.42 (2.4)	0.82
<b>EtFOSAA</b>	N-ethyl-perfluorooctane sulfonamido acetic acid	32 (3.3%)	1.13 (1.50)	76 (7.9%)	0.94 (1.3)	0.48
<b>MeFOSAA</b>	N-methyl-perfluorooctane sulfonamido acetic acid	29 (2.6%)	0.94 (1.10)	32 (3.3%)	1.03 (1.0)	0.41
<b>PFNA</b>	Perfluorononanoic acid	65 (6.8%)	0.53 (0.40)	46 (4.8%)	0.58 (0.5)	0.78

LOD = Limit of Detection; LOD was 0.1 ng/mL for all analytes

IQR = Inter-Quartile Range

PFOS = n-PFOS + Sm-PFOS + Sm2-PFOS

PFOA = n-PFOA + Sb-PFOA

\*Partial data from this table has been previously published in: Cardenas, Andres, *et al.* "Plasma concentrations of per-and polyfluoroalkyl substances at baseline and associations with glycemic indicators and diabetes incidence among high-risk adults in the Diabetes Prevention Program trial." *Environmental health perspectives* 125.10 (2017): 107001.

SUPPLEMENTARY DATA

**eTable S2.** <sup>a</sup> Adjusted hazard ratios (HRs) and 95% confidence intervals (95% CI) for diabetes incidence during follow-up relative to baseline plasma PFAS concentration categorized in tertiles overall and stratified by baseline treatment.

PFAS	Overall N=956 (507 cases)		Placebo N=476 (272 cases)		Lifestyle N=480 (235 cases)	
	HR (95% CI)	P	HR (95% CI)	P	HR (95% CI)	P
<b>Sum PFAS</b>						
Tertile 1	<i>Ref</i>	0.59	<i>Ref</i>	0.74	<i>Ref</i>	0.93
Tertile 2	0.97 (0.77, 1.22)		0.94 (0.69, 1.30)		1.00 (0.71, 1.41)	
Tertile 3	0.94 (0.75, 1.18)		0.95 (0.69, 1.30)		0.99 (0.70, 1.39)	
<b>PFOS</b>						
Tertile 1	<i>Ref</i>	0.30	<i>Ref</i>	0.47	<i>Ref</i>	0.54
Tertile 2	0.96 (0.77, 1.20)		0.83 (0.61, 1.13)		1.17 (0.83, 1.64)	
Tertile 3	0.89 (0.71, 1.11)		0.90 (0.66, 1.22)		0.92 (0.64, 1.29)	
<b>n-PFOS</b>						
Tertile 1	<i>Ref</i>	0.27	<i>Ref</i>	0.69	<i>Ref</i>	0.60
Tertile 2	1.00 (0.80, 1.26)		0.85 (0.63, 1.16)		1.25 (0.89, 1.78)	
Tertile 3	1.09 (0.73, 1.15)		0.94 (0.69, 1.29)		0.94 (0.66, 1.33)	
<b>Sm-PFOS</b>						
Tertile 1	<i>Ref</i>	0.27	<i>Ref</i>	0.75	<i>Ref</i>	0.26
Tertile 2	0.94 (0.75, 1.18)		1.04 (0.76, 1.42)		0.88 (0.63, 1.22)	
Tertile 3	0.88 (0.71, 1.10)		0.95 (0.70, 1.29)		0.83 (0.59, 1.15)	
<b>Sm2-PFOS</b>						
<Median	<i>Ref</i>	0.85	<i>Ref</i>	0.37	<i>Ref</i>	0.36
≥Median	1.02 (0.85, 1.22)		1.12 (0.87, 1.45)		0.88 (0.67, 1.16)	
<b>PFOA</b>						
Tertile 1	<i>Ref</i>	0.62	<i>Ref</i>	0.72	<i>Ref</i>	0.37
Tertile 2	0.94 (0.75, 1.17)		0.93 (0.68, 1.27)		0.88 (0.63, 1.23)	
Tertile 3	0.94 (0.75, 1.18)		1.06 (0.77, 1.47)		0.86 (0.61, 1.20)	
<b>Sb-PFOA</b>						
Tertile 1	<i>Ref</i>	0.13	<i>Ref</i>	<b>0.002</b>	<i>Ref</i>	0.36
Tertile 2	1.12 (0.90, 1.40)		<b>1.53 (1.12, 2.10)</b>		0.69 (0.49, 1.10)	
Tertile 3	1.18 (0.95, 1.46)		<b>1.61 (1.18, 2.19)</b>		0.88 (0.64, 1.21)	
<b>PFHxS</b>						
Tertile 1	<i>Ref</i>	0.07	<i>Ref</i>	0.07	<i>Ref</i>	0.91
Tertile 2	0.80 (0.64, 1.02)		0.78 (0.58, 1.06)		0.69 (0.47, 1.00)	
Tertile 3	0.81 (0.64, 1.01)		0.75 (0.54, 1.04)		0.95 (0.66, 1.35)	
<b>EtFOSAA</b>						
Tertile 1	<i>Ref</i>	0.84	<i>Ref</i>	0.93	<i>Ref</i>	0.67
Tertile 2	1.03 (0.83, 1.29)		0.96 (0.70, 1.32)		1.13 (0.79, 1.60)	
Tertile 3	1.02 (0.82, 1.28)		0.99 (0.72, 1.35)		1.08 (0.77, 1.55)	
<b>MeFOSAA</b>						
Tertile 1	<i>Ref</i>	0.65	<i>Ref</i>	0.91	<i>Ref</i>	0.61
Tertile 2	1.03 (0.82, 1.29)		1.06 (0.77, 1.45)		0.96 (0.69, 1.34)	
Tertile 3	0.95 (0.75, 1.19)		0.98 (0.71, 1.36)		0.91 (0.65, 1.29)	
<b>PFNA</b>						

SUPPLEMENTARY DATA

Tertile 1	<i>Ref</i>		<i>Ref</i>		<i>Ref</i>	
Tertile 2	0.96 (0.77, 1.21)	0.68	1.07 (0.78, 1.48)	0.48	0.86 (0.61, 1.20)	0.98
Tertile 3	1.06 (0.83, 1.34)		1.13 (0.81, 1.56)		1.02 (0.70, 1.47)	

<sup>a</sup> Adjusted for participant sex, race/ethnicity, and baseline age, marital status, education, income, smoking history, BMI, maternal diabetes, paternal diabetes and treatment assignment if not stratified.

SUPPLEMENTARY DATA

**eTable S3.** <sup>a</sup> Adjusted Odds Ratios (ORs) and 95% confidence intervals (95% CIs) for specific microvascular disease prevalence at the end of DPOS by baseline plasma PFAS concentration

	<b>Nephropathy</b> N=871 (n=110 cases)	<b>Neuropathy</b> N=713 (n=88 cases)	<b>Retinopathy</b> N=801 (n=98 cases)
<b>PFAS (log<sub>2</sub>-scale)</b>	OR (95% CI)	OR (95% CI)	OR (95% CI)
<b>Sum PFAS</b>	1.13 (0.87, 1.46)	1.10 (0.79, 1.54)	1.12 (0.85, 1.46)
<b>PFOS</b>	1.12 (0.89, 1.41)	1.03 (0.77, 1.40)	1.10 (0.86, 1.41)
n-PFOS	1.12 (0.90, 1.41)	0.99 (0.74, 1.32)	1.11 (0.87, 1.41)
Sm-PFOS	1.06 (0.85, 1.33)	1.13 (0.85, 1.50)	1.09 (0.87, 1.37)
Sm2-PFOS	1.13 (0.95, 1.34)	1.20 (0.97, 1.48)	<b>1.23 (1.03, 1.47)</b>
<b>PFOA</b>	0.91 (0.69, 1.20)	1.04 (0.75, 1.46)	1.08 (0.82, 1.41)
n-PFOA	0.91 (0.68, 1.21)	1.05 (0.74, 1.48)	1.05 (0.79, 1.39)
Sb-PFOA	0.99 (0.86, 1.15)	1.03 (0.87, 1.24)	1.13 (0.97, 1.32)
<b>PFHxS</b>	0.98 (0.80, 1.20)	1.19 (0.93, 1.51)	1.09 (0.89, 1.33)
<b>EtFOSAA</b>	1.12 (0.97, 1.29)	1.08 (0.90, 1.30)	1.07 (0.91, 1.26)
<b>MeFOSAA</b>	1.06 (0.88, 1.29)	1.20 (0.94, 1.53)	0.90 (0.74, 1.10)
<b>PFNA</b>	1.00 (0.82, 1.22)	1.16 (0.91, 1.50)	1.14 (0.93, 1.42)

<sup>a</sup> Adjusted for participant sex, race/ethnicity, and baseline age, marital status, education, income, smoking history, BMI, maternal diabetes, paternal diabetes and treatment assignment if not stratified.

SUPPLEMENTARY DATA

**eTable S4.** Mean change of plasma perfluoroalkyl and polyfluoroalkyl substances (PFAS) concentrations from baseline to 2-years post-randomization stratified by treatment.

PFASs	Placebo	Lifestyle	<i>p</i>
	Mean change (95% CI) (ng/mL)	Mean change (95% CI) (ng/mL)	
<b>Sum PFAS</b>	-0.95 (-1.86, -0.05)	-1.14 (-2.11, -0.18)	0.78
<b>PFOS</b>	0.49 (-0.98, 1.97)	1.38 (-0.13, 2.89)	0.41
n-PFOS	0.91 (-0.22, 2.05)	1.71 (0.55, 2.88)	0.33
Sm-PFOS	-0.38 (-0.86, 0.10)	-0.32 (-0.83, 0.19)	0.87
Sm2-PFOS	---	---	---
<b>PFOA</b>	1.54 (1.21, 1.86)	0.92 (0.57, 1.26)	0.0011
n-PFOA	0.57 (0.37, 0.76)	0.60 (0.35, 0.86)	0.82
Sb-PFOA	0.96 (0.71, 1.22)	0.31 (0.14, 0.48)	3.56x10 <sup>-5</sup>
<b>PFHxS</b>	-0.06 (-0.22, 0.11)	-0.13 (-0.32, 0.07)	0.61
<b>EtFOSAA</b>	-0.28 (-0.49, -0.08)	-0.08 (-0.34, 0.19)	0.24
<b>MeFOSAA</b>	0.16 (0.02, 0.31)	0.13 (-0.07, 0.34)	0.83
<b>PFNA</b>	0.06 (0.02, 0.09)	0.07 (0.03, 0.10)	0.72

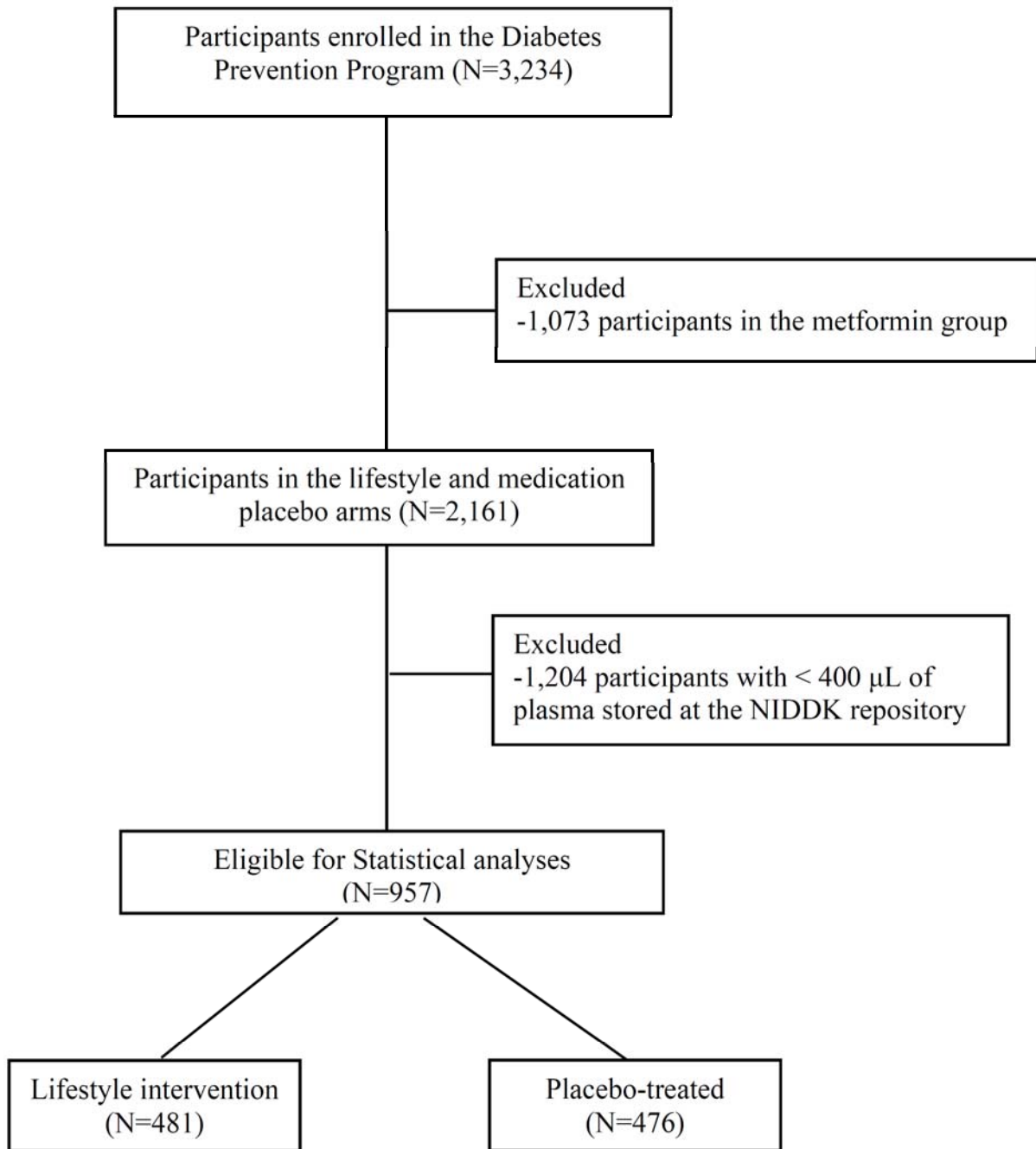
SUPPLEMENTARY DATA

**eTable S5.** Geometric means (GMs), inter-quartile ranges (IQR) and proportion of samples below the limit of detection (LOD) for plasma Sb-PFOA concentration by treatment assignment at baseline and 2-years post-randomization.

<b>Sb-PFOA</b>	<b>Baseline</b>			<b>2-years post-randomization</b>		
	<b>Placebo</b>	<b>Lifestyle</b>	<b><i>p</i></b>	<b>Placebo</b>	<b>Lifestyle</b>	<b><i>p</i></b>
GM (IQR) ng/mL	0.44 (0.50)	0.44 (0.60)	0.93	0.73 (0.80)	0.52 (0.70)	1.65x10 <sup>-5</sup>
% below LOD	15.76%	17.46%	0.53	8.19%	12.89%	0.02

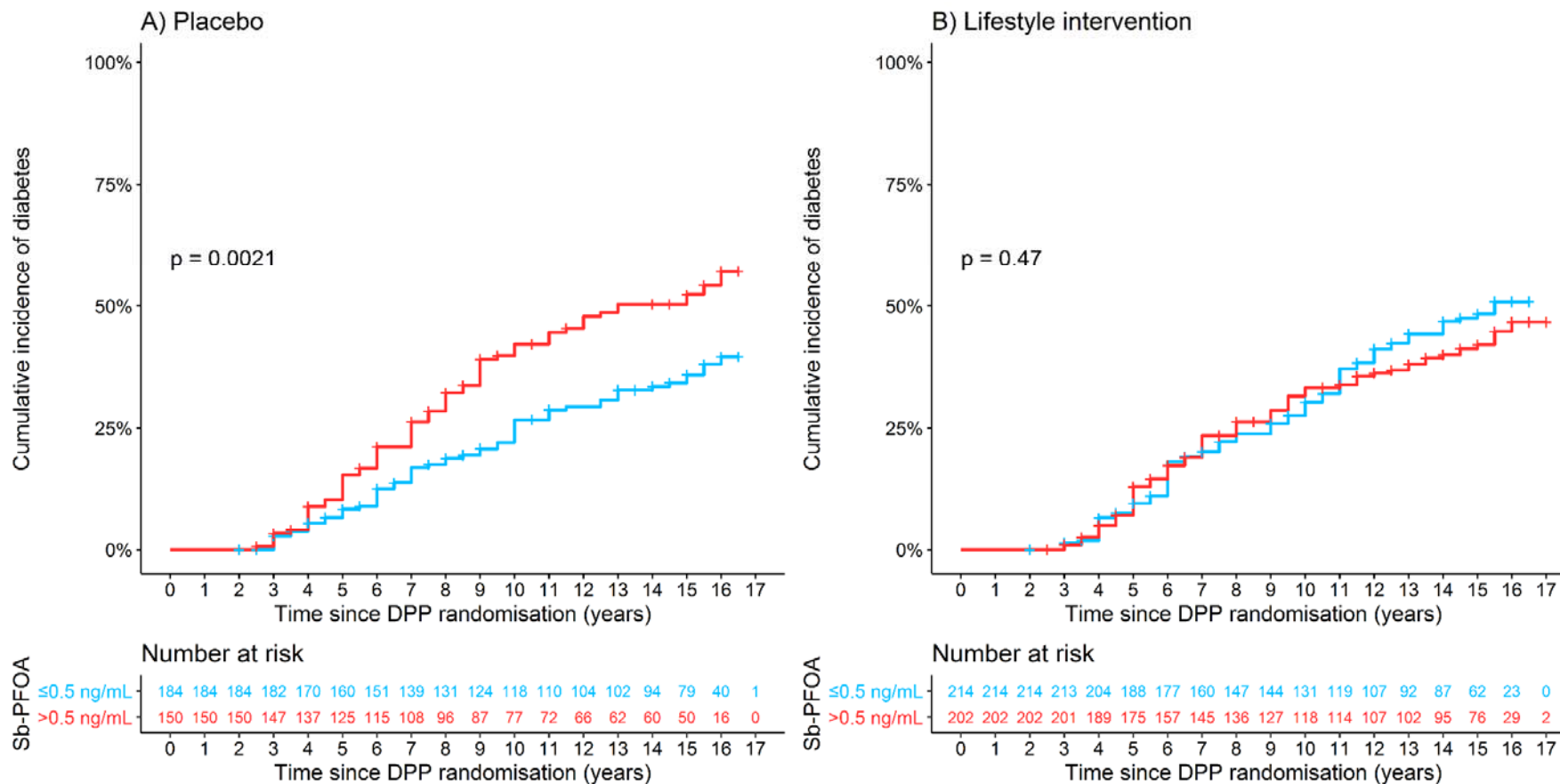
SUPPLEMENTARY DATA

**eFigure S1.** Participant flow diagram selected for analyses of plasma PFAS concentration from the Diabetes Prevention Program Trial



SUPPLEMENTARY DATA

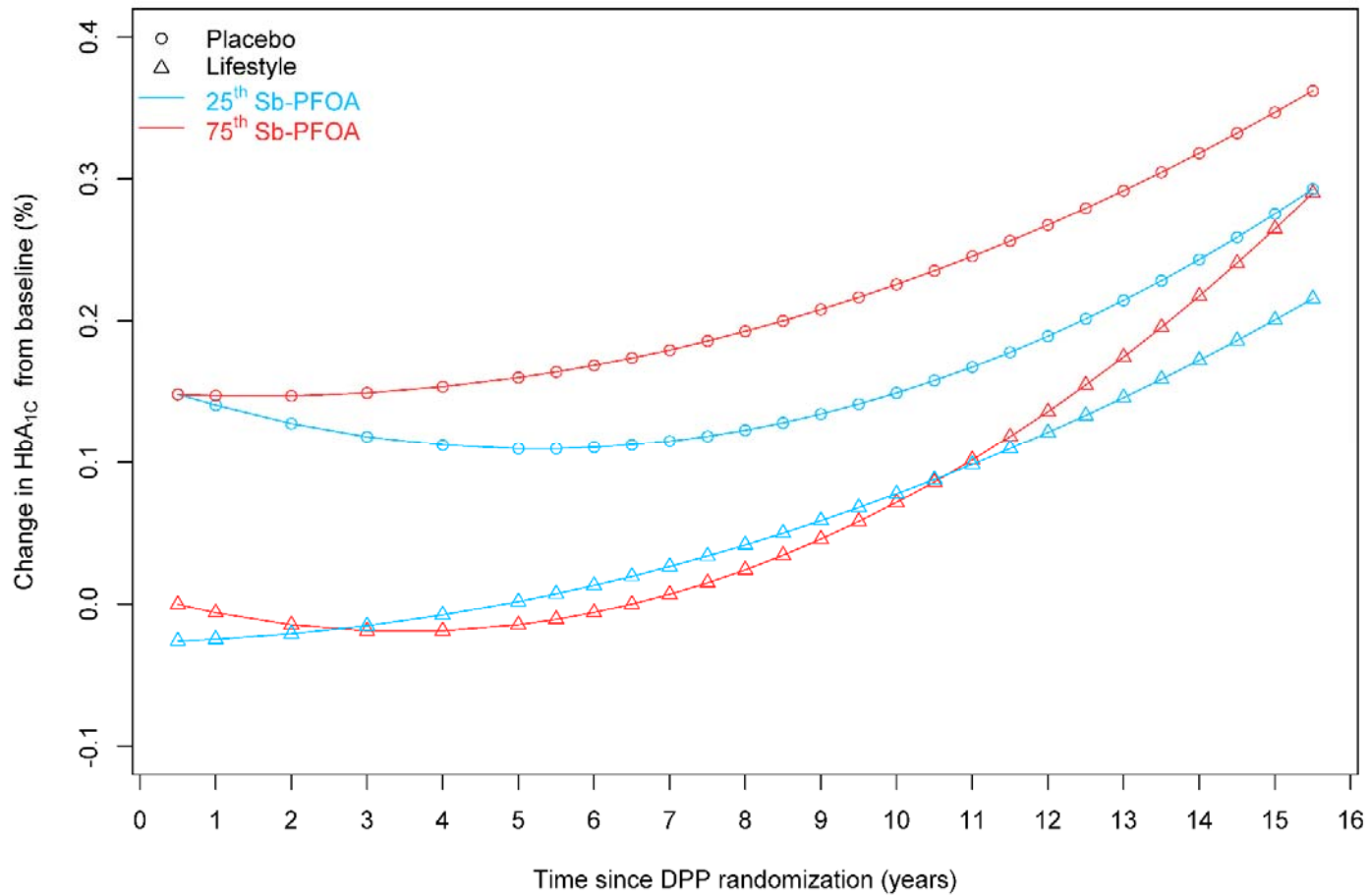
**eFigure S2.** Cumulative incidence of diabetes, excluding participants that developed diabetes (N=204) during DPP, for participants with plasma Sb-PFOA at or below median concentration ( $\leq 0.5$  ng/mL) and among participants with above median Sb-PFOA concentration for **A)** placebo treated group and **B)** lifestyle intervention group.





SUPPLEMENTARY DATA

**eFigure S3.** <sup>a</sup> Adjusted estimated change in hemoglobin A<sub>1c</sub> (HbA<sub>1c</sub>) from baseline, stratified by treatment, for the 25<sup>th</sup> and 75<sup>th</sup> percentiles of plasma Sb-PFOA concentration.



<sup>a</sup> Adjusted for participant sex, race/ethnicity, and baseline age, marital status, education, income, smoking history, BMI, maternal diabetes and paternal diabetes