

Supplementary Material

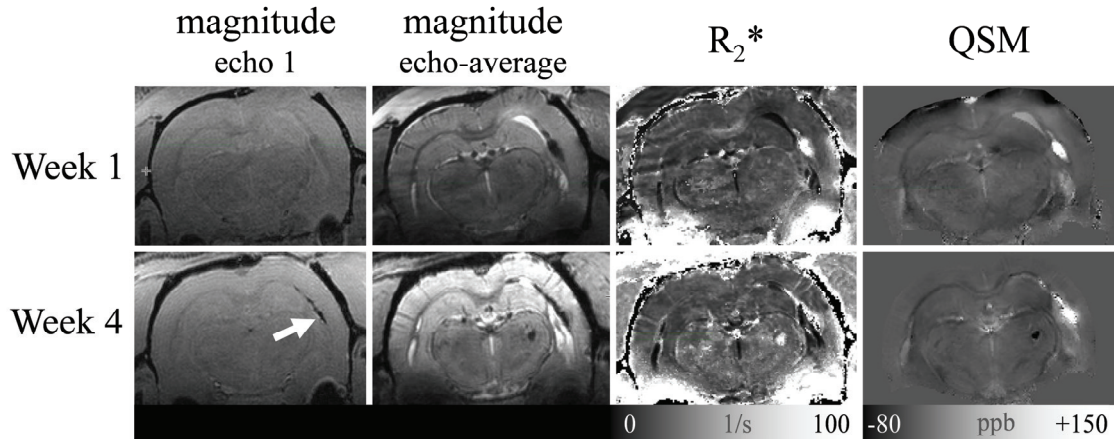


Figure S.1. Illustration of the effect of susceptibility change of blood during degradation on magnitude image contrast. Shown are images from a s-mTBI animal, implying that the animal was injured only once at week 1. At week 1, the first magnitude echo did not show a pronounced hypo-intensity at the location of the hemorrhage, whereas a hemorrhage was observed on the echo-averaged image, R_2^* map, and on the susceptibility map. At week 4, the hemorrhage was visible on all images.

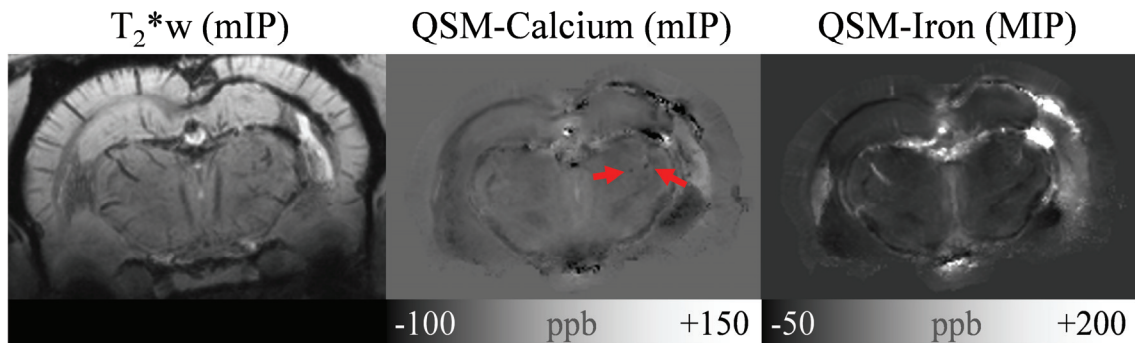


Figure S.2. MRI findings of calcification that could not be confirmed with histology. Shown are, from left to right, a mIP of the T_2^* -weighted magnitude, a mIP of the susceptibility map (delineating calcium) and a MIP of the susceptibility map (delineating iron). All projections were calculated over $580\mu\text{m}$. The red arrows mark two small calcifications on the susceptibility map.