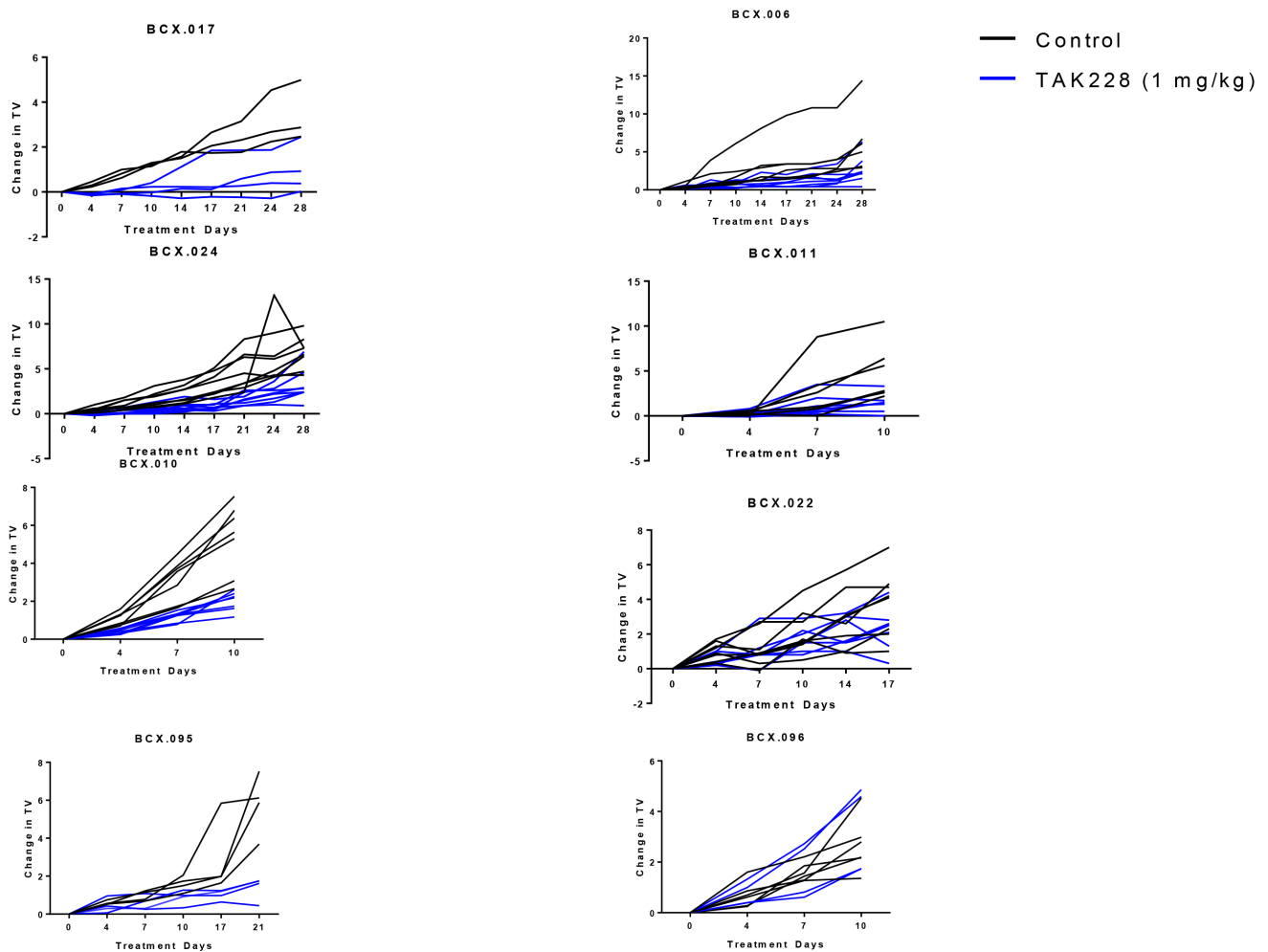
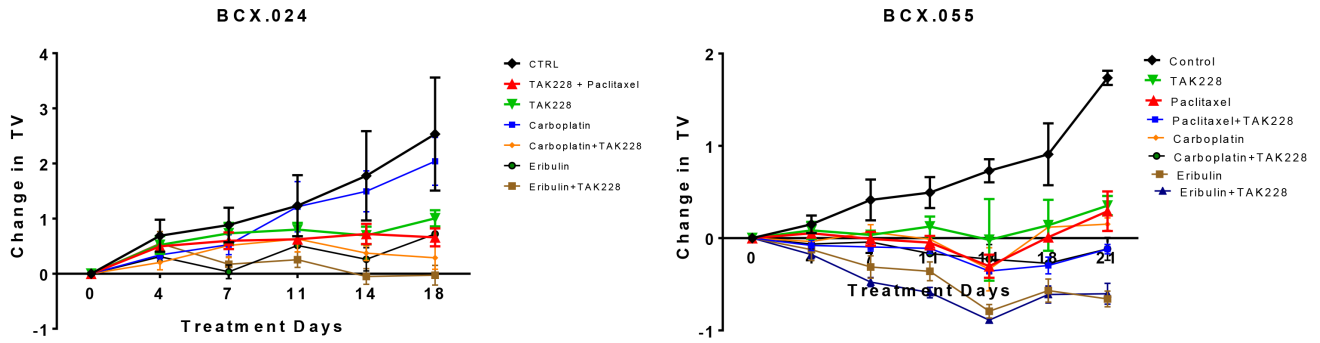


TAK228 enhances antitumor activity of eribulin in triple negative breast cancer

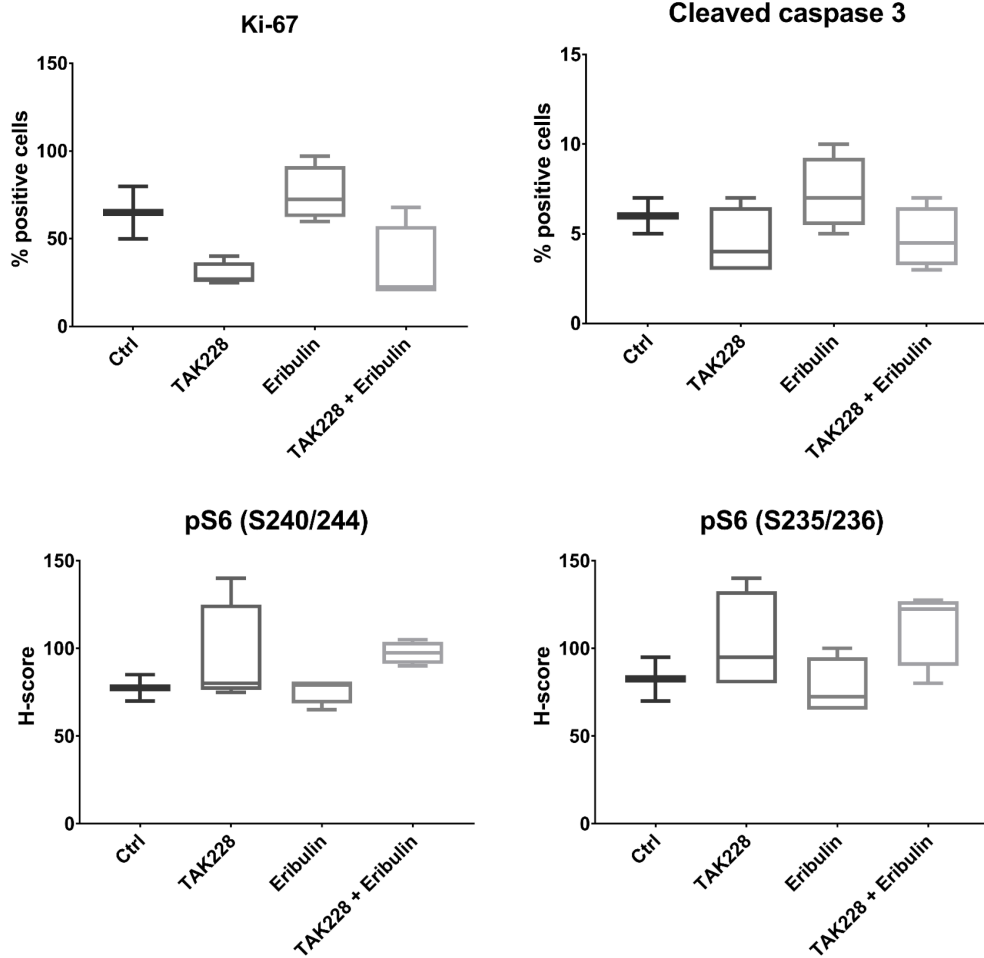
SUPPLEMENTARY MATERIALS



Supplementary Figure 1: Breast cancer xenografts display differential sensitivity to TAK228.



Supplementary Figure 2: Effects of TAK228 in combination with chemotherapy *in vivo*.



Supplementary Figure 3: Immunohistochemical analysis of BCX.024 patient-derived xenograft model. Control ($n = 2$), TAK228 ($n = 4$), eribulin ($n = 4$), and TAK228-eribulin combination ($n = 4$) tumors were assessed by IHC for Ki-67, cleaved caspase 3, pS6 (S235/236), and pS6 (S240/244) expression. The box extends from the 25th to 75th percentiles and the line in the middle plotted at the median. Whiskers are drawn min to max, showing all points.