

New-Data Letter

Early dissemination of *qnrE1* in *Salmonella* Typhimurium from livestock in South America

Daniel F. Monte,^{a,b*} Nilton Lincopan,^{c,d} Louise Cerdeira,^c Paula J. Fedorka-Cray,^b Mariza Landgraf^a

Department of Food and Experimental Nutrition, Faculty of Pharmaceutical Sciences, Food Research Center, University of São Paulo, Brazil^a; Department of Population Health and Pathobiology, North Carolina State University, College of Veterinary Medicine, Raleigh, North Carolina, USA^b; Department of Clinical Analysis, Faculty of Pharmaceutical Sciences, University of São Paulo, Brazil^c; Department of Microbiology, Institute of Biomedical Sciences, University of São Paulo, Brazil^d.

Keywords: *qnrE1*, fluoroquinolones, Non-typhoidal *Salmonella*, South America

*Address correspondence to Daniel F. M. Monte, monte_dfm@usp.br, or Nilton Lincopan, lincopan@usp.br

Supplemental material

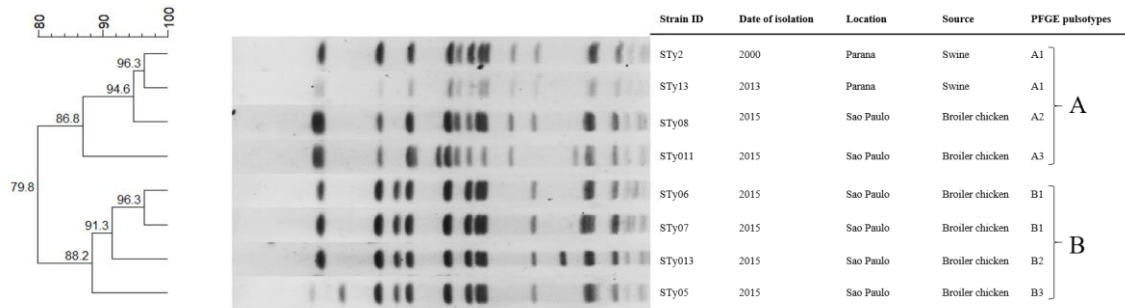


Fig. S1. Dendrogram showing the genotypic relatedness of eight *S. Typhimurium* strains carrying *qnrE1* gene by pulsed-field gel electrophoresis (PFGE) using *XbaI* restriction. The dendrogram was generated by using Bionumerics software V. 7.6.3 (Applied Maths NV, Keistraat, Belgium) with Dice similarity index and unweight pair group method average (UPGMA) cluster analysis. Pulsotypes A and B were clustered using a less than 80% similarity cut-off point, whereas subclusters were grouped based on a $\geq 80\%$ similarity cut-off. Banding patterns were compared with 1% of optimization and 1% of band position tolerance.