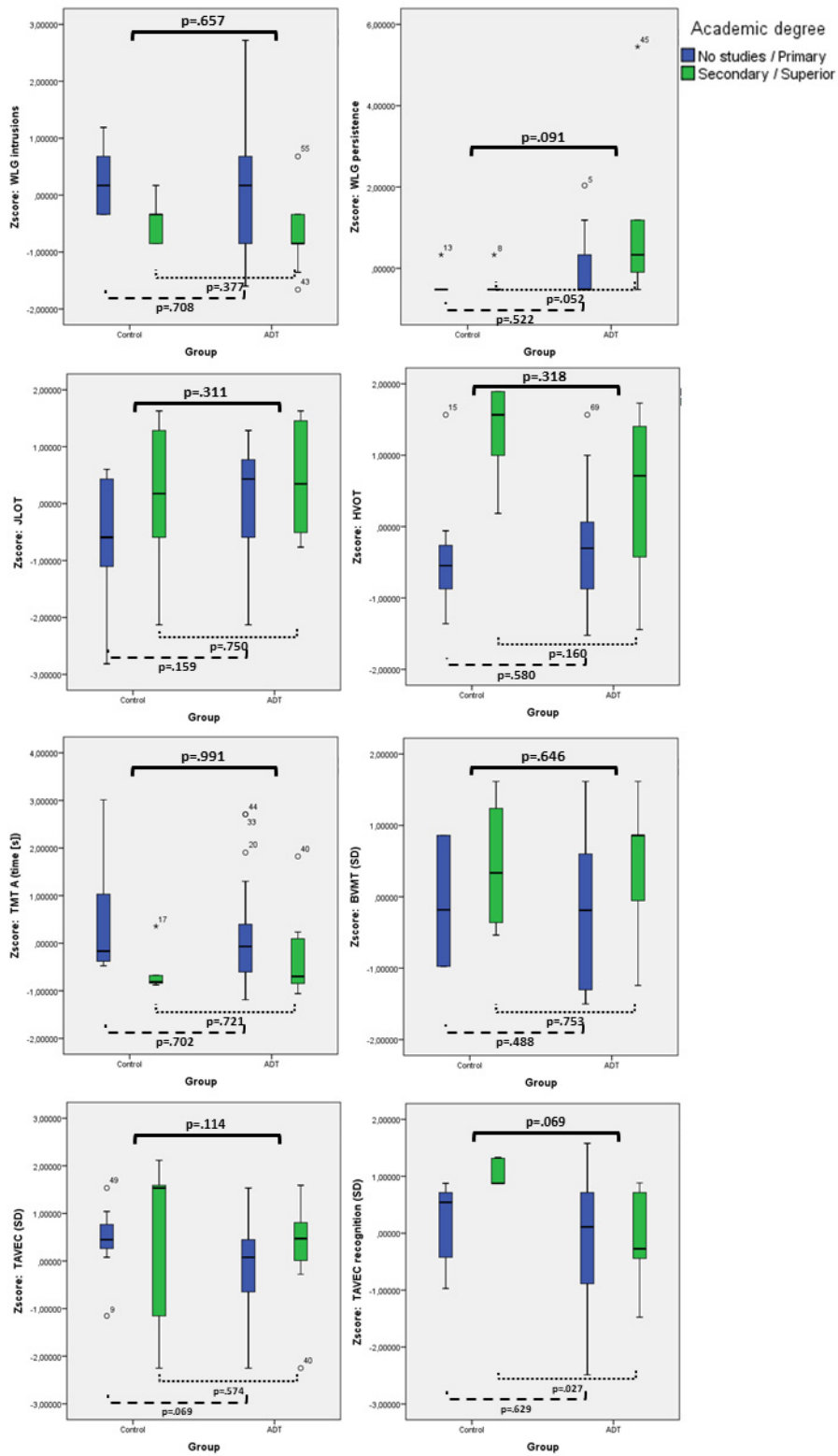
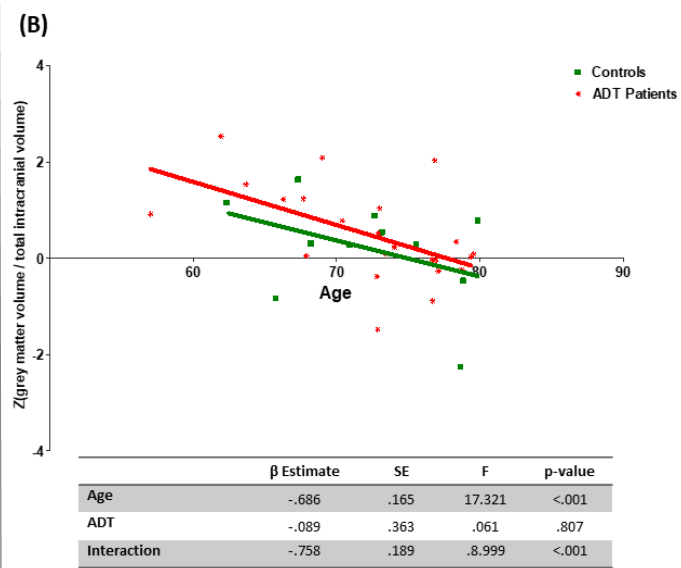
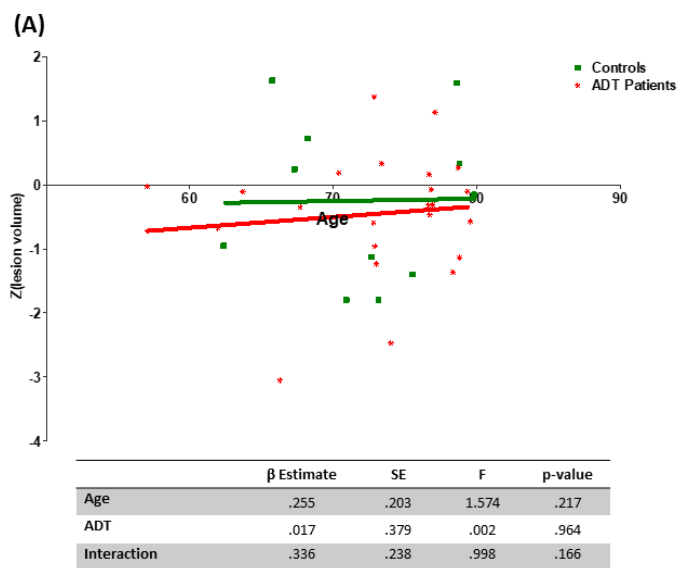


SUPPLEMENTARY FIGURES



Supplementary Figure 1. Intergroup comparison between control and ADT groups. Upper p-value represents the level of significance of the comparison between control and ADT group without considering educational level. Lower p-values represent the level of significance between control and ADT groups with low-educational level (discontinuous line) and with high-educational level (dotted line).



Supplementary Figure 2. Main effect of age and ADT and age-by-group interaction effect on lesion volume and GMV considering only patients younger than 80 years of age.