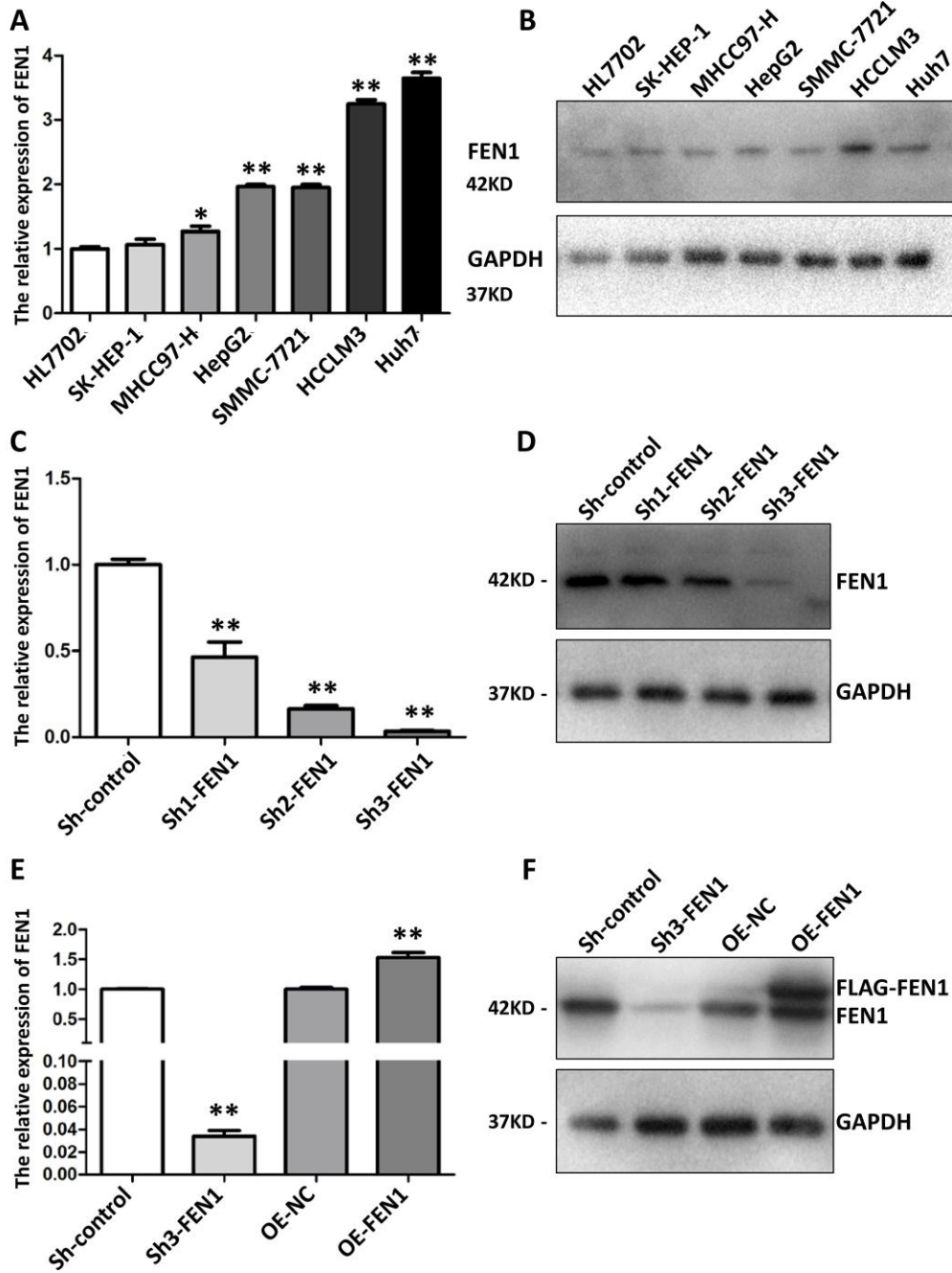


SUPPLEMENTARY FIGURE



**Supplementary Figure 1. FEN1 is significantly upregulated in hepatoma cell lines and stable FEN1 knockdown and overexpression lines were established.** (A) RT-qPCR analysis of FEN1 mRNA expression in normal human liver HL7702 cells and six hepatoma cell lines (SK-HEP-1, MHCC97-H, HepG2, SMMC-7721, HCCLM3 and Huh7). (B) Representative WB analysis of FEN1 protein levels in HL7702 and the six hepatoma cell lines. (C) RT-qPCR analysis of FEN1 mRNA expression after lentiviral expression of the different ShRNA-FEN1 constructs. (D) Representative WB analysis of FEN1 expression after lentiviral expression of ShRNA-FEN1. RT-qPCR (E) and WB (F) analysis were used to identify successfully generated cell lines. All data represent mean  $\pm$  SD of three independent experiments; compared to HL7702 cells or the corresponding control group, \* $P < 0.05$  and \*\* $P < 0.01$ .