

## **Online-Only Supplemental Material**

This appendix has been provided by the authors to give readers additional information about their work.

Supplement to:

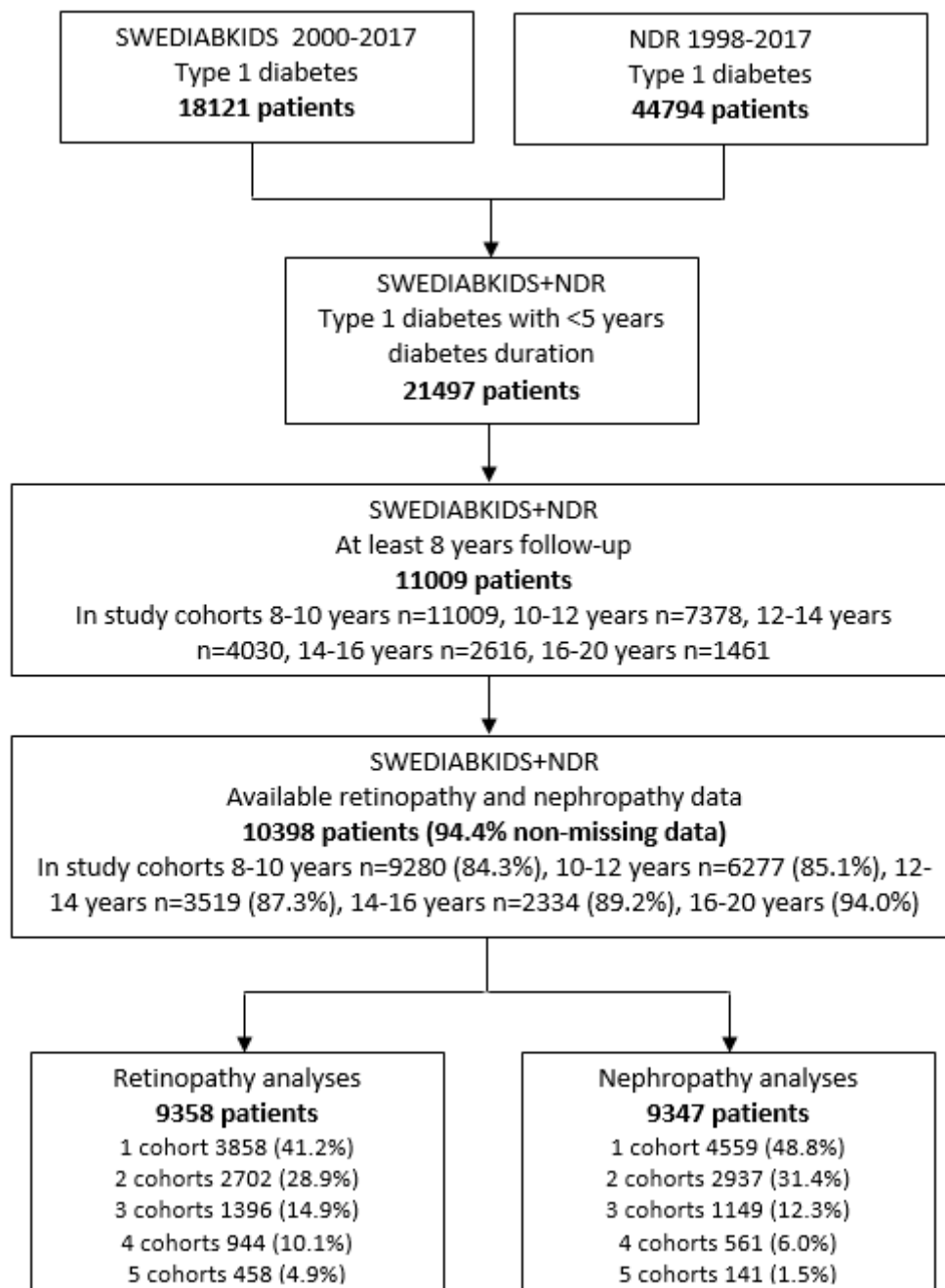
### **HbA<sub>1c</sub> level as a risk factor for retinopathy and nephropathy in children and adults with type 1 diabetes: Swedish population based cohort study**

Lind M, Pivodic A, Svensson A-M, Ólafsdóttir AF, Wedel H, Ludvigsson J.

## Table of contents

Table of contents.....	2
Supplemental Figure 1. Study cohorts.....	3
Supplemental Table 1. Patient characteristics for overall cohort and for patients with HbA1c AUC <48 mmol/mol.....	4
Supplemental Table 2.1 Number and percent of retinopathy endpoints for each time period and the effect of HbA1c AUC categories and HbA1c AUC per 10 mmol/mol increase on endpoints by using unadjusted and adjusted logistic regression. ....	5
Supplemental Table 2.2 Number and percent of albuminuria endpoints for each time period and the effect of HbA1c AUC categories on endpoints by using unadjusted and adjusted logistic regression. ....	7

**Supplemental Figure 1. Study cohorts**



Legend Figure 1. Flow-chart of various steps of included patients in the analyses.

**Supplemental Table 1. Patient characteristics for overall cohort and for patients with HbA1c AUC <48 mmol/mol.**

Variable	HbA1c AUC <48 mmol/mol		
	All patients (n=10398)	No PDR/Laser or macroalbuminuria (n=769)	PDR/Laser or macroalbuminuria any time (n=12)
Diabetes onset year	2003 (4) 2004 (1993; 2009) n=10398	2003 (4) 2004 (1993; 2009) n=769	2004 (4) 2003 (1999; 2009) n=12
Age at first visit	14.7 (8.1) 13.0 (0.0; 34.0) n=10398	20.2 (7.4) 21.0 (0.9; 34.0) n=769	22.7 (8.2) 23.5 (2.1; 33.0) n=12
HbA1c AUC for longest follow-up	63.4 (11.7) 62.3 (29.1; 120.9) n=10398	43.9 (3.8) 45.1 (29.1; 48.0) n=769	45.1 (3.0) 45.7 (38.8; 47.9) n=12
SBP mean for longest follow-up	116.3 (8.9) 115.9 (80.0; 175.0) n=10372	117.9 (9.3) 117.6 (92.0; 166.7) n=767	119.6 (7.2) 120.4 (103.0; 131.2) n=12
DBP mean for longest follow-up	69.8 (6.0) 69.6 (47.1; 105.0) n=10372	70.5 (5.9) 70.4 (52.0; 94.4) n=767	72.0 (7.0) 71.3 (59.8; 84.9) n=12
BMI mean for longest follow-up	22.7 (4.1) 22.2 (13.2; 48.4) n=10362	23.1 (3.6) 22.9 (13.9; 39.9) n=762	21.9 (3.2) 21.9 (16.9; 27.8) n=12
HDL mean for longest follow-up	1.52 (0.38) 1.48 (0.40; 5.90) n=9171	1.55 (0.37) 1.50 (0.70; 4.40) n=712	1.61 (0.51) 1.56 (0.78; 2.30) n=11
LDL mean for longest follow-up	2.52 (0.68) 2.45 (-0.36; 8.94) n=9156	2.40 (0.62) 2.36 (0.80; 4.76) n=708	2.05 (0.33) 1.87 (1.72; 2.54) n=11
Cholesterol mean for longest follow-up	4.48 (0.78) 4.41 (2.20; 11.00) n=9370	4.32 (0.71) 4.29 (2.25; 7.33) n=717	4.11 (0.45) 4.17 (3.55; 4.80) n=11
Triglycerides mean for longest follow-up	1.07 (0.68) 0.90 (0.20; 18.06) n=8920	0.881 (0.420) 0.776 (0.200; 3.640) n=708	0.928 (0.360) 0.900 (0.400; 1.600) n=11
Smoking max for longest follow-up			
No	6837 (77.3%)	625 (88.7%)	11 (100.0%)
Yes	2010 (22.7%)	80 (11.3%)	0 (0.0%)
For categorical variables n (%) is presented. For continuous variables Mean (SD) / Median (Min; Max) / n= is presented.			

**Supplemental Table 2.1 Number and percent of retinopathy endpoints for each time period and the effect of HbA1c AUC categories and HbA1c AUC per 10 mmol/mol increase on endpoints by using unadjusted and adjusted logistic regression.**

	Any retinopathy vs None			PPDR/PDR/Laser vs None/Simplex			PDR/Laser vs None/Simplex/PPDR		
	n (%) events	Unadjusted	Adjusted**	n (%) events	Unadjusted	Adjusted**	n (%) events	Unadjusted	Adjusted*
<b>Follow-up 8-10 years from onset (n=8049)</b>									
<48	55 (8.8%)	0.90 (0.63-1.29)	0.83 (0.56-1.23)	6 (1.0%)	4.21 (0.85-20.93)	2.88 (0.58-14.40)	5 (0.8%)	3.50 (0.68-18.12)	2.55 (0.49-13.27)
48-52	84 (9.6%)	1.00	1.00	2 (0.2%)	1.00	1.00	2 (0.2%)	1.00	1.00
53-57	164 (11.6%)	1.23 (0.93-1.62)	1.47 (1.06-2.04)	3 (0.2%)	0.92 (0.15-5.54)	0.78 (0.11-5.59)	2 (0.1%)	0.62 (0.09-4.37)	0.79 (0.11-5.64)
58-70	569 (16.6%)	1.87 (1.47-2.38)	2.11 (1.58-2.82)	24 (0.7%)	3.07 (0.72-13.02)	3.92 (0.91-16.91)	7 (0.2%)	0.89 (0.18-4.30)	1.34 (0.28-6.50)
>70	491 (28.6%)	3.75 (2.93-4.80) c=0.63	3.55 (2.63-4.80)	35 (2.0%)	9.04 (2.17-37.65) c=0.69	7.75 (1.78-33.72)	7 (0.4%)	1.78 (0.37-8.58) c=0.64	2.32 (0.48-11.26)
HbA1c AUC (OR per 10 units)		1.55 (1.47-1.63) p<0.0001 c=0.64 (0.62-0.66)	1.51 (1.42-1.62) p<0.0001		1.92 (1.64-2.24) p<0.0001 c=0.70 (0.63-0.77)	1.78 (1.46-2.16) p<0.0001		1.24 (0.89-1.73) c=0.51	1.31 (0.97-1.77) p=0.073
<b>Follow-up 10-11 years from onset (n=5324)</b>									
<48	18 (6.6%)	0.44 (0.26-0.76)	0.43 (0.24-0.76)	2 (0.7%)	1.81 (0.25-12.92)	2.85 (0.26-31.69)	1 (0.4%)	1.81 (0.11-29.01)	1.44 (0.09-23.28)
48-52	68 (13.9%)	1.00	1.00	2 (0.4%)	1.00	1.00	1 (0.2%)	1.00	1.00
53-57	127 (14.8%)	1.08 (0.78-1.48)	1.00 (0.69-1.44)	3 (0.3%)	0.85 (0.14-5.13)	1.56 (0.14-17.35)	3 (0.3%)	1.71 (0.18-16.51)	2.11 (0.22-20.47)
58-70	523 (21.7%)	1.72 (1.31-2.26)	1.71 (1.24-2.36)	16 (0.7%)	1.63 (0.37-7.11)	4.94 (0.64-38.06)	5 (0.2%)	1.02 (0.12-8.71)	1.40 (0.16-12.23)
>70	483 (37.2%)	3.67 (2.77-4.85) c=0.64	3.18 (2.28-4.42)	35 (2.7%)	6.75 (1.62-28.16) c=0.70	11.94 (1.57-91.04)	13 (1.0%)	4.94 (0.64-37.84) c=0.68	5.95 (0.77-46.21)
HbA1c AUC (OR per 10 units)		1.75 (1.64-1.86) p<0.0001 c=0.66 (0.64-0.68)	1.67 (1.54-1.80) p<0.0001		2.42 (2.01-2.91) p<0.0001 c=0.75 (0.67-0.83)	2.28 (1.82-2.85) p<0.0001		2.17 (1.65-2.86) p<0.0001 c=0.69 (0.55-0.83)	2.07 (1.59-2.70) p<0.0001
<b>Follow-up 12-13 years from onset (n=3044)</b>									
<48	6 (12.2%)	0.73 (0.28-1.86)	0.55 (0.19-1.55)	0 (0.0%)	3.77 (0.07-197.20)F		0 (0.0%)	3.77 (0.07-197.20)F	
48-52	30 (16.1%)	1.00	1.00	0 (0.0%)	1.00		0 (0.0%)	1.00	
53-57	77 (17.7%)	1.12 (0.71-1.78)	1.11 (0.65-1.87)	2 (0.5%)	2.16 (0.10-45.46)F		1 (0.2%)	1.29 (0.05-32.06)F	
58-70	454 (29.6%)	2.19 (1.46-3.28)	1.95 (1.24-3.07)	19 (1.2%)	4.80 (0.29-80.41)F		4 (0.3%)	1.10 (0.06-20.60)F	
>70	411 (48.9%)	4.97 (3.29-7.52) c=0.64	3.61 (2.26-5.78)	57 (6.8%)	27.34 (1.67-447.71)F c=0.75		20 (2.4%)	9.31 (0.56-155.76)F c=0.77	
HbA1c AUC (OR per 10 units)		1.89 (1.74-2.05) p<0.0001 c=0.67 (0.65-0.69)	1.72 (1.55-1.91) p<0.0001		2.96 (2.45-3.58) p<0.0001 c=0.82 (0.77-0.87)	2.83 (2.20-3.65) p<0.0001		3.69 (2.72-5.02) p<0.0001 c=0.86 (0.78-0.94)	3.09 (2.24-4.25) p<0.0001
<b>Follow-up 14-15 years from onset (n=1927)</b>									
<48	2 (10.0%)	0.55 (0.12-2.59)	0.53 (0.11-2.68)	0 (0.0%)	4.95 (0.09-272.41) F		0 (0.0%)	4.95 (0.09-272.40)F	
48-52	17 (16.8%)	1.00	1.00	0 (0.0%)	1.00		0 (0.0%)	1.00	
53-57	60 (24.6%)	1.61 (0.89-2.93)	1.70 (0.87-3.32)	2 (0.8%)	2.09 (0.10-44.58)F		1 (0.4%)	1.25 (0.05-31.38)F	
58-70	352 (35.8%)	2.76 (1.61-4.72)	2.84 (1.56-5.16)	12 (1.2%)	2.61 (0.15-45.05) F		2 (0.2%)	0.52 (0.02-10.98)F	

	Any retinopathy vs None			PPDR/PDR/Laser vs None/Simplex			PDR/Laser vs None/Simplex/PPDR		
	n (%) events	Unadjusted	Adjusted**	n (%) events	Unadjusted	Adjusted**	n (%) events	Unadjusted	Adjusted*
<b>&gt;70</b>	352 (60.8%)	7.66 (4.43-13.24) c=0.66	6.61 (3.57-12.24)	59 (10.2%)	23.21 (1.40-383.63) F c=0.77		23 (4.0%)	8.57 (0.51-144.21)F c=0.80	
<b>HbA1c AUC (OR per 10 units)</b>		2.08 (1.86-2.32) p=<0.0001 c=0.69 (0.67-0.71)	1.91 (1.67-2.18) p=<0.0001		3.18 (2.57-3.93) p=<0.0001 c=0.83 (0.78-0.88)	2.69 (2.08-3.48) p=<0.0001		4.60 (3.22-6.57) p=<0.0001 c=0.89 (0.82-0.97)	4.15 (2.87-5.99) p=<0.0001
<b>Follow-up 16-20 years from onset (n=1172)</b>									
<b>&lt;48</b>	4 (40.0%)	2.04 (0.51-8.23)	2.89 (0.69-12.15)	0 (0.0%)	0.00 (0.00-infinity)	0.00 (0.00-infinity)	0 (0.0%)	1.92 (0.06-57.22)F	
<b>48-52</b>	15 (24.6%)	1.00	1.00	1 (1.6%)	1.00	1.00	1 (1.6%)	1.00	
<b>53-57</b>	52 (34.2%)	1.59 (0.81-3.12)	2.11 (1.02-4.37)	2 (1.3%)	0.80 (0.07-8.99)	1.16 (0.10-13.52)	0 (0.0%)	0.13 (0.01-3.34)F	
<b>58-70</b>	301 (51.3%)	3.23 (1.76-5.91)	3.50 (1.82-6.74)	21 (3.6%)	2.23 (0.29-16.84)	2.71 (0.34-21.38)	6 (1.0%)	0.45 (0.07-2.75)F	
<b>&gt;70</b>	269 (74.3%)	8.87 (4.73-16.63) c=0.66	6.97 (3.48-13.94)	64 (17.7%)	12.89 (1.75-94.70) c=0.74	9.43 (1.21-73.56)	30 (8.3%)	3.70 (0.69-19.75)F c=0.77	
<b>HbA1c AUC (OR per 10 units)</b>		2.11 (1.83-2.43) p=<0.0001 c=0.69 (0.66-0.72)	1.78 (1.51-2.09) p=<0.0001		3.01 (2.45-3.71) p=<0.0001 c=0.81 (0.76-0.86)	2.45 (1.92-3.12) p=<0.0001		3.14 (2.40-4.12) p=<0.0001 c=0.86 (0.79-0.92)	2.87 (2.18-3.79) p=<0.0001
* Adjusted for age and sex									
** Additionally adjusted for mean SBP, mean DBP, mean BMI, mean HDL, mean LDL, mean cholesterol, mean triglycerides, smoking.									
F=Firth's penalized maximum likelihood estimation									

**Supplemental Table 2.2 Number and percent of albuminuria endpoints for each time period and the effect of HbA1c AUC categories on endpoints by using unadjusted and adjusted logistic regression.**

	Microalbuminuria/Macroalbuminuria vs None			Macroalbuminuria vs None/Microalbuminuria		
	n (%) events	Unadjusted	Adjusted**	n (%) events	Unadjusted	Adjusted*
<b>Follow-up 8-9 years from onset (n=6476)</b>						
<48	24 (3.6%)	1.06 (0.61-1.86)	1.02 (0.56-1.86)	7 (1.1%)	1.40 (0.47-4.18)	1.22 (0.41-3.67)
48-52	27 (3.4%)	1.00	1.00	6 (0.8%)	1.00	1.00
53-57	60 (5.4%)	1.62 (1.02-2.57)	1.70 (1.02-2.84)	8 (0.7%)	0.95 (0.33-2.75)	1.03 (0.36-2.99)
58-70	134 (5.5%)	1.65 (1.08-2.51)	1.55 (0.97-2.46)	29 (1.2%)	1.58 (0.65-3.81)	1.79 (0.74-4.35)
>70	145 (9.7%)	3.04 (2.00-4.63) c=0.60	2.52 (1.58-4.03)	21 (1.4%)	1.86 (0.75-4.64) c=0.56	1.97 (0.79-4.92)
HbA1c AUC (OR per 10 units)		1.39 (1.29-1.50) p<0.0001 c=0.61 (0.58-0.64)	1.31 (1.20-1.43) p<0.0001		1.21 (1.01-1.44) p=0.034 c=0.56 (0.49-0.63)	1.23 (1.04-1.46) p=0.017
<b>Follow-up 10-11 years from onset (n=4490)</b>						
<48	10 (3.6%)	1.09 (0.48-2.46)	1.09 (0.45-2.62)	2 (0.7%)	8.21 (0.39-172.33)F	
48-52	15 (3.3%)	1.00	1.00	0 (0.0%)	1.00	
53-57	39 (5.6%)	1.71 (0.93-3.15)	2.22 (1.14-4.35)	6 (0.9%)	8.45 (0.47-150.75)F	
58-70	84 (4.5%)	1.38 (0.79-2.41)	1.60 (0.85-3.01)	12 (0.6%)	6.11 (0.36-103.76)F	
>70	114 (9.5%)	3.07 (1.77-5.31) c=0.61	3.11 (1.65-5.84)	14 (1.2%)	11.09 (0.66-186.83)F c=0.61	
HbA1c AUC (OR per 10 units)		1.47 (1.34-1.62) p<0.0001 c=0.62 (0.58-0.65)	1.42 (1.28-1.59) p<0.0001		1.40 (1.09-1.80) p=0.0083 c=0.60 (0.50-0.69)	1.40 (1.10-1.78) p=0.0069
<b>Follow-up 12-13 years from onset (n=2642)</b>						
<48	1 (2.2%)	0.69 (0.08-6.07)	0.59 (0.07-5.23)	0 (0.0%)	3.46 (0.07-181.53)F	
48-52	5 (3.2%)	1.00	1.00	0 (0.0%)	1.00	
53-57	16 (4.4%)	1.40 (0.50-3.88)	1.52 (0.54-4.28)	2 (0.5%)	2.17 (0.10-45.80)F	
58-70	49 (3.9%)	1.22 (0.48-3.11)	0.91 (0.35-2.38)	8 (0.6%)	2.12 (0.12-37.20)F	
>70	93 (11.5%)	3.95 (1.58-9.89) c=0.65	2.51 (0.97-6.49)	10 (1.2%)	4.14 (0.24-71.49)F c=0.60	
HbA1c AUC (OR per 10 units)		1.87 (1.64-2.13) p<0.0001 c=0.67 (0.63-0.72)	1.67 (1.42-1.97) p<0.0001		2.07 (1.53-2.81) p<0.0001 c=0.69 (0.56-0.82)	2.01 (1.46-2.77) p<0.0001
<b>Follow-up 14-15 years from onset (n=1959)</b>						
<48	0 (0.0%)	0.00 (0.00-infinity)	0.00 (0.00-infinity)	0 (0.0%)	4.16 (0.08-228.66)F	
48-52	3 (3.4%)	1.00	1.00	0 (0.0%)	1.00	
53-57	6 (2.5%)	0.74 (0.18-3.03)	0.46 (0.10-2.11)	1 (0.4%)	1.13 (0.04-28.44)F	
58-70	40 (4.1%)	1.23 (0.37-4.05)	0.87 (0.26-2.93)	6 (0.6%)	1.20 (0.07-21.83)F	
>70	70 (11.0%)	3.54 (1.09-11.49) c=0.65	2.17 (0.64-7.31)	14 (2.2%)	4.16 (0.24-71.48)F, c=0.68	
HbA1c AUC (OR per 10 units)		1.94 (1.66-2.26) p<0.0001 c=0.68 (0.63-0.74)	1.97 (1.61-2.41) p<0.0001		2.52 (1.86-3.41) p<0.0001 c=0.76 (0.65-0.88)	2.64 (1.88-3.72) p<0.0001
<b>Follow-up 16-20 years from onset (n=1262)</b>						
<48	0 (0.0%)	0.00 (0.00-infinity)	0.00 (0.00-infinity)	0 (0.0%)	7.36 (0.12-455.21)F	
48-52	3 (4.8%)	1.00	1.00	0 (0.0%)	1.00	
53-57	9 (5.5%)	1.15 (0.30-4.39)	0.94 (0.23-3.79)	1 (0.6%)	1.15 (0.05-29.34)F	
58-70	21 (3.4%)	0.69 (0.20-2.37)	0.55 (0.15-1.95)	1 (0.2%)	0.30 (0.01-7.62)F	
>70	59 (14.5%)	3.34 (1.01-11.02) c=0.69	2.42 (0.70-8.32)	15 (3.7%)	4.95 (0.29-85.63)F c=0.79	
HbA1c AUC (OR per 10 units)		2.16 (1.80-2.59) p<0.0001 c=0.70 (0.64-0.77)	2.14 (1.71-2.68) p<0.0001		4.03 (2.74-5.92) p<0.0001 c=0.88 (0.78-0.98)	3.83 (2.58-5.70) p<0.0001
* Adjusted for age and sex						
** Additionally adjusted for mean SBP, mean DBP, mean BMI, mean HDL, mean LDL, mean cholesterol, mean triglycerides, smoking.						
F=Firth's penalized maximum likelihood estimation						

