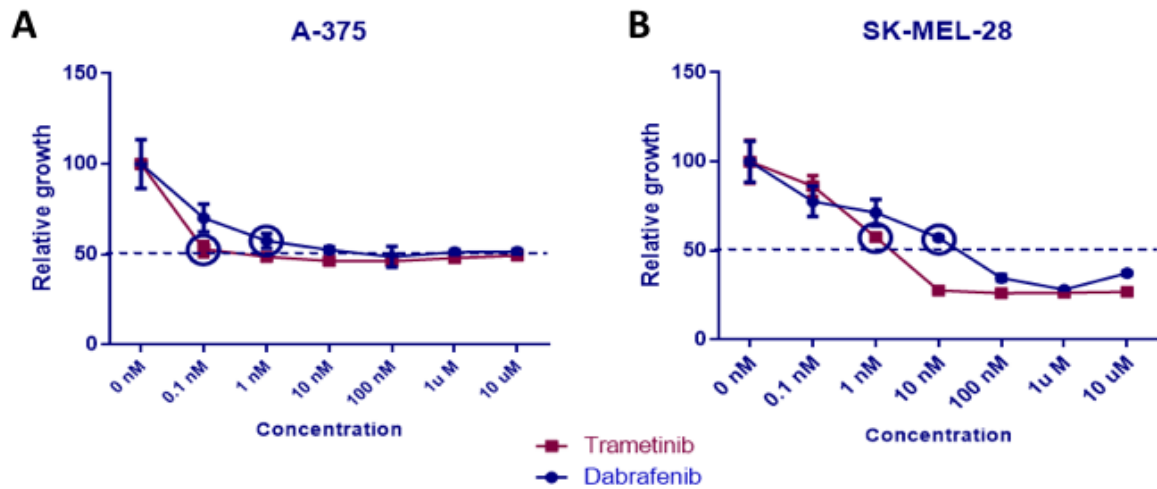


Cell growth inhibition assay



BRAF^{v600e} melanoma cell lines sensitivity to Dabrafenib and Trametinib. A375 (A) and SK-MEL-28 (B) cells were treated with various concentrations of Dabrafenib and Trametinib for 72 hours. Following the treatment, cell viability was evaluated with WST1 test and IC50 was estimated as the minimum concentration required to reduce cell growth to 50% of the control value (0 nM). Experiments were performed as technical triplicates over biological triplicates, with a total of 9 data points. Data were presented as mean \pm SD and differences were considered statistically significant when $p < 0.05$.