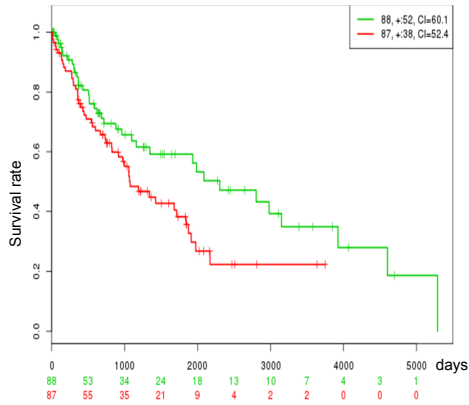
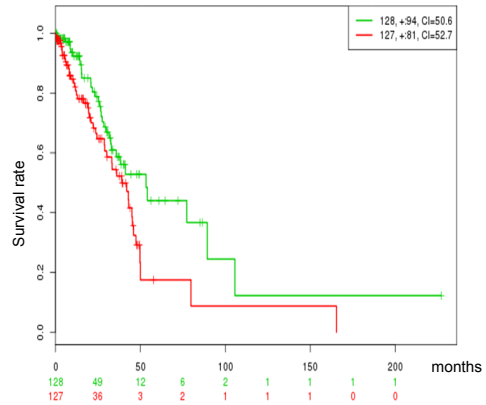


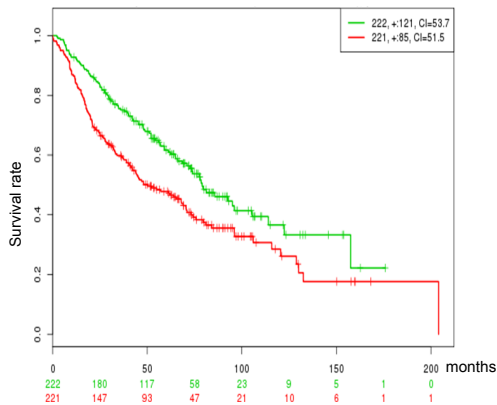
TCGA LUSC  
p= 0.03306



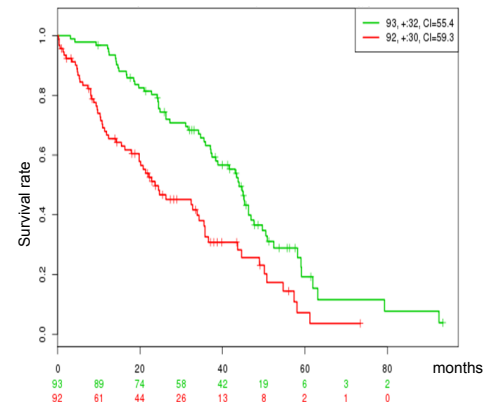
TCGA LUAD  
p= 0.02186



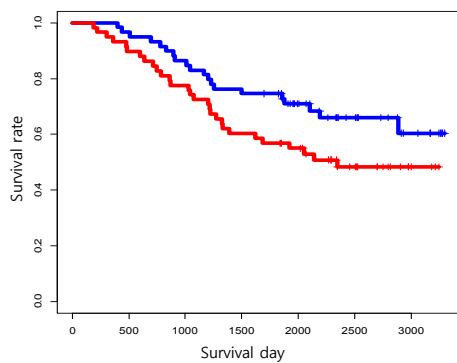
Kerby Shedden et al. 2008  
p= 0.001137



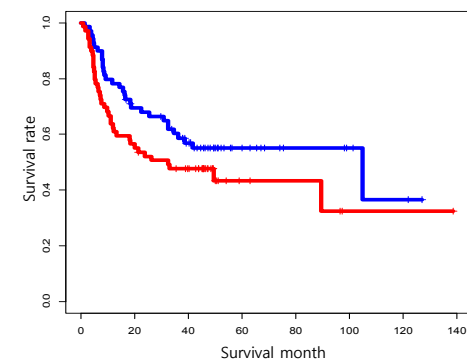
Dhananjay Chitale et al. 2009  
p= 0.0001199



Tomida et al. 2009  
p = 0.03  
Asian (Japanese) population

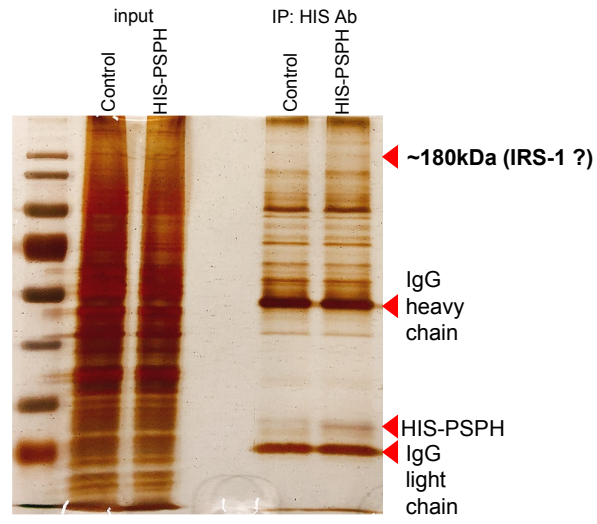


Lee et al. 2008  
p = 0.05  
Asian (Korean) population

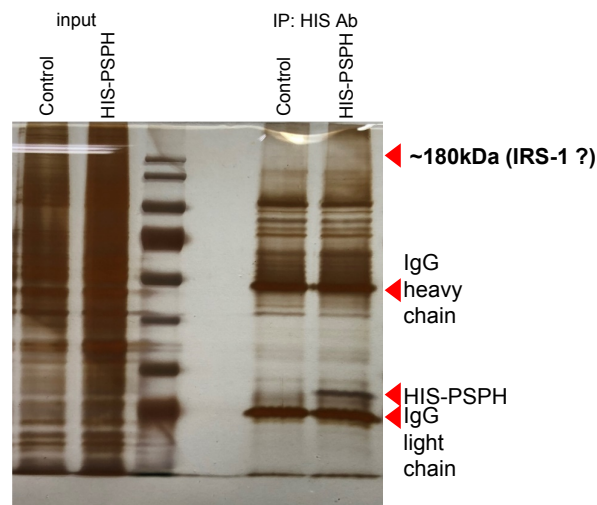


Supplementary Fig. S1. Prognoses of two groups of lung cancer patients classified by PSPH expression (SurvExpress).

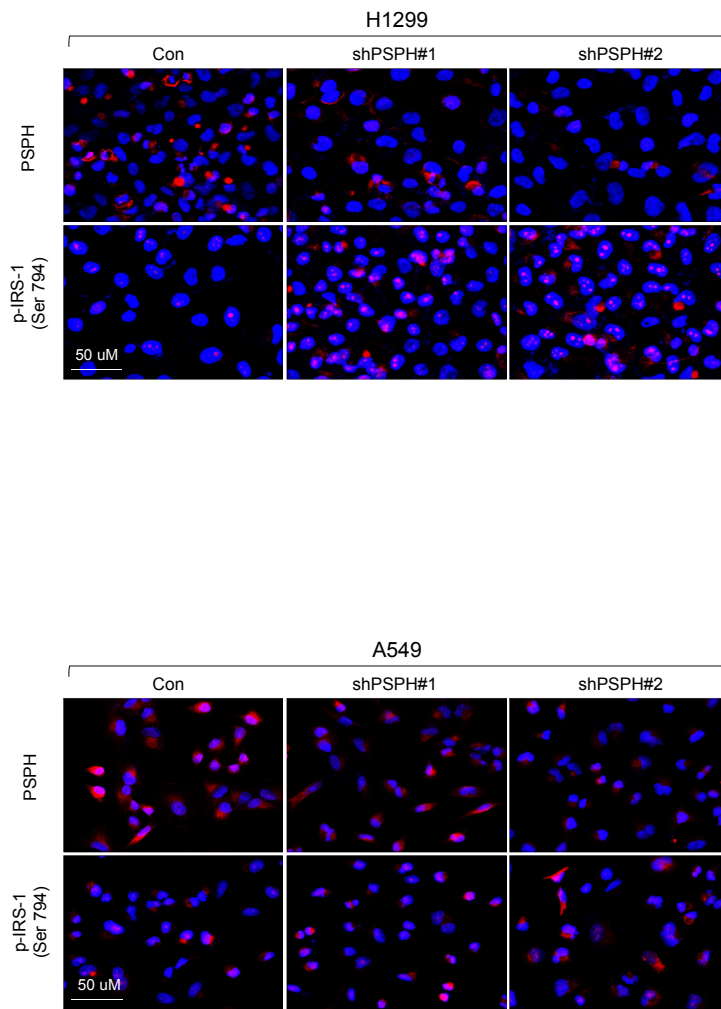
A549



NCI-H1299



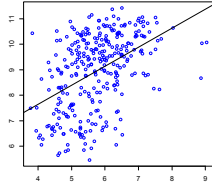
Supplementary Fig. S2. Silver-stained image of SDS-PAGE using PSPH IP samples.



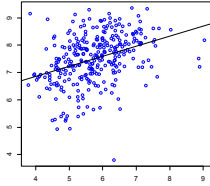
**Supplementary Fig. S3. Validation of IRS-1 dephosphorylation by PSPH knockdown (immunostaining).** Red, phospho-IRS-1 (Ser794); Blue, DAPI.

### GSE30219

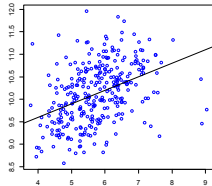
CDK1  
R = 0.459525  
p = 1.92E-17



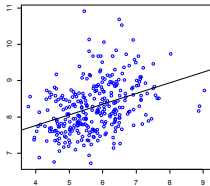
CDK2  
R = 0.38093  
p = 3.63E-08



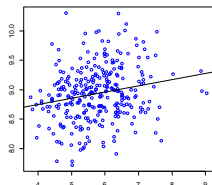
CDK4  
R = 0.410599  
p = 6.47E-14



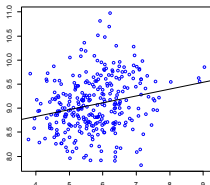
DDIT3  
R = 0.378739  
p = 6.58E-12



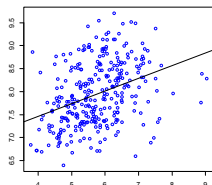
EIF4E  
R = 0.207446  
p = 0.000252



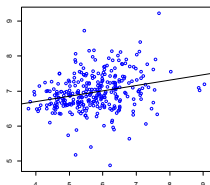
GSK3B  
R = 0.230147  
p = 4.68E-05



HRAS  
R = 0.362531  
p = 5.74E-11

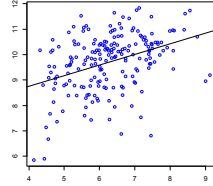


IRAK4  
R = 0.258831  
p = 4.32E-06

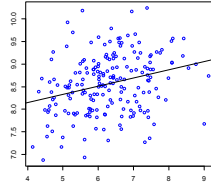


### GSE37745

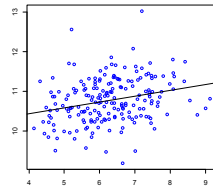
CDK1  
R = 0.459525  
p = 1.92E-17



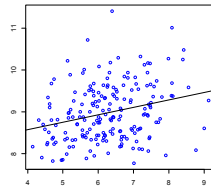
CDK2  
R = 0.38093  
p = 3.63E-08



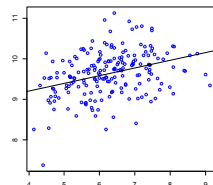
CDK4  
R = 0.266284  
p = 0.000162



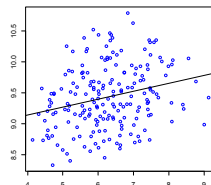
DDIT3  
R = 0.271391  
p = 0.000119



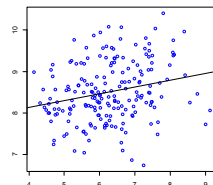
EIF4E  
R = 0.346076  
p = 6.75E-07



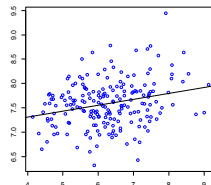
GSK3B  
R = 0.252963  
p = 0.000347



HRAS  
R = 0.235428  
p = 0.000895



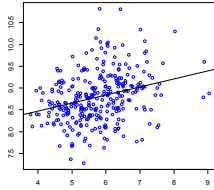
IRAK4  
R = 0.258112  
p = 0.00026



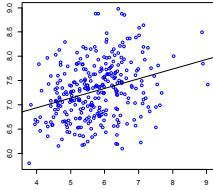
Supplementary Fig. S4. The correlation between PSPH expression and Akt target genes.

GSE30219

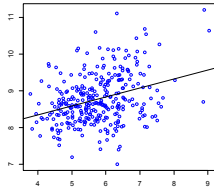
MAPK1  
R = 0.290382  
p = 2.23E-07



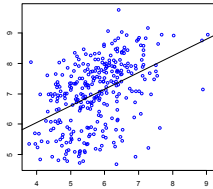
MAPKAP1  
R = 0.307215  
p = 3.92E-08



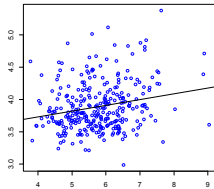
NCK1  
R = 0.258926  
p = 4.29E-06



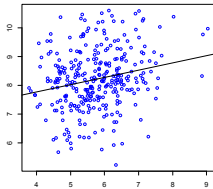
PDK1  
R = 0.453816  
p = 5.30E-17



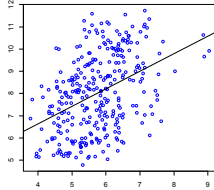
RAC1  
R = 0.21669  
p = 0.00013



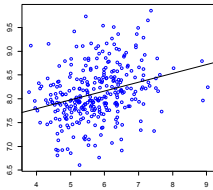
RIT1  
R = 0.219812  
p = 0.000103



SLC2A1  
R = 0.415064  
p = 3.25E-14

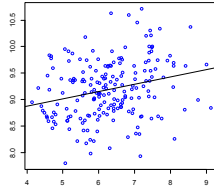


SMAD2  
R = 0.292309  
p = 1.84E-07

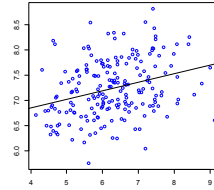


GSE37745

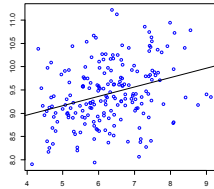
MAPK1  
R = 0.256068  
p = 0.000292



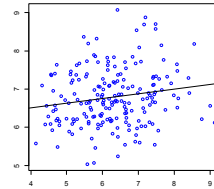
MAPKAP1  
R = 0.301675  
p = 1.73E-05



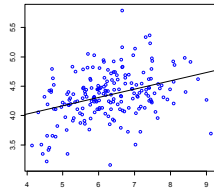
NCK1  
R = 0.206953  
p = 0.00361



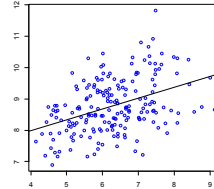
PDK1  
R = 0.167673  
p = 0.018821



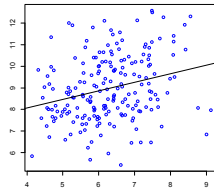
RAC1  
R = 0.352453  
p = 4.06E-07



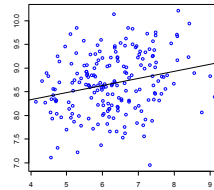
RIT1  
R = 0.411148  
p = 2.15E-09



SLC2A1  
R = 0.267319  
p = 0.000152



SMAD2  
R = 0.245994  
p = 0.00051



Supplementary Fig. S4. Continued.