

Title: High-fat and high-cholesterol diet decreases phosphorylated inositol-requiring kinase-1 and inhibits autophagy process in rat liver

Author List: Hisao Naito, Yuki Yoshikawa-Bando, Yuan Yuan, Sayuki Hashimoto, Kazuya Kitamori, Hiroshi Yatsuya, Tamie Nakajima

Supplementary information table 1. Control diet ingredients

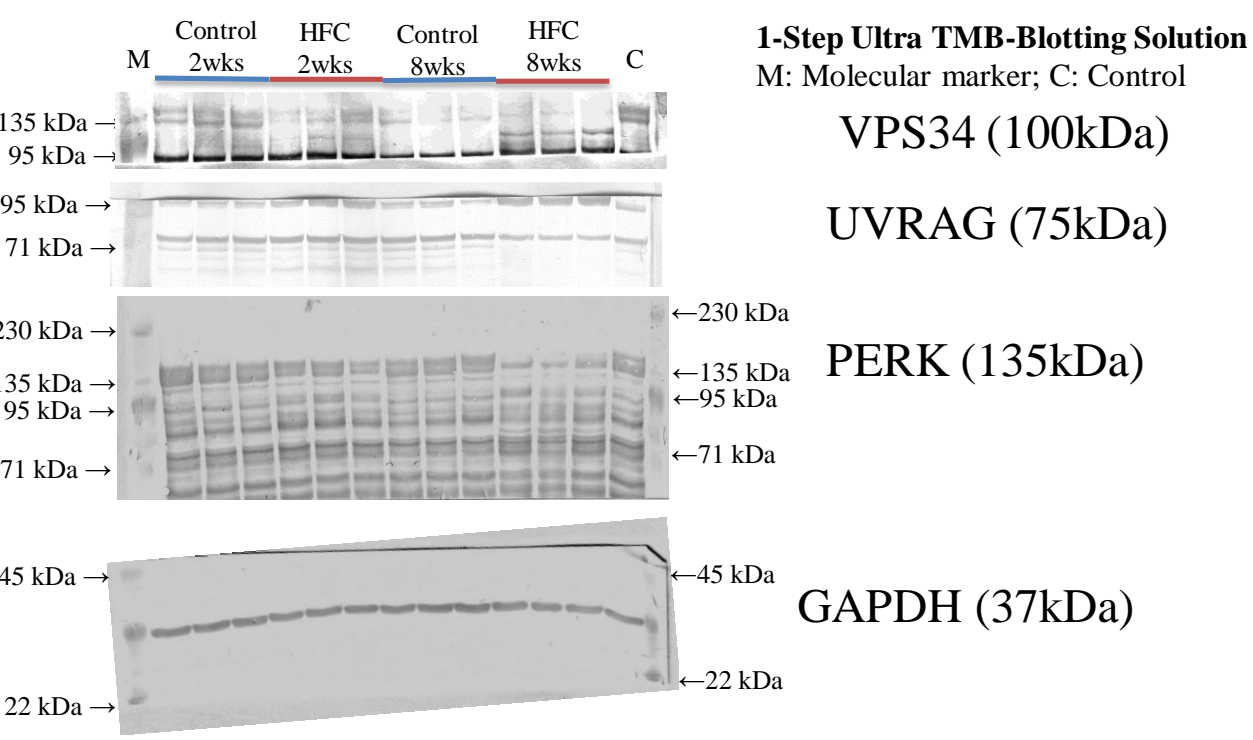
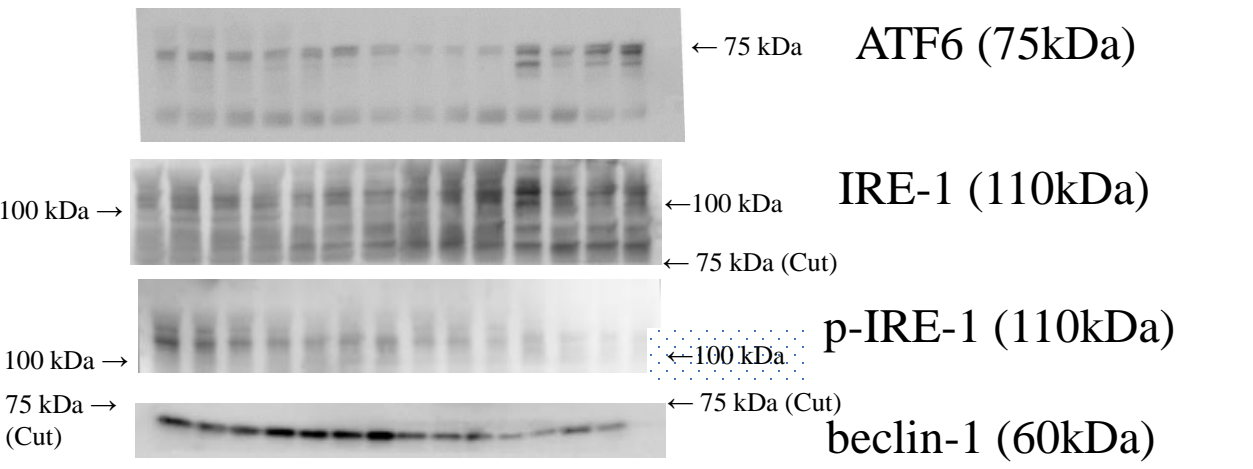
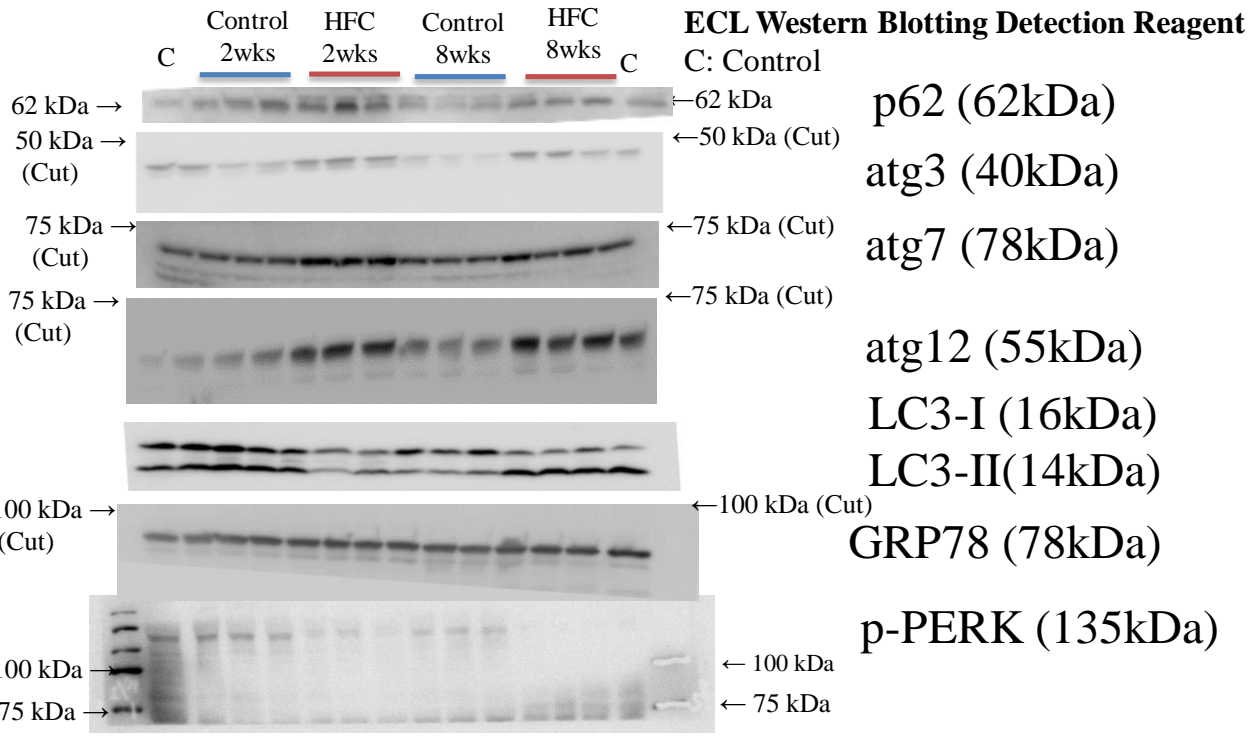
---

Per 100 g of control diet	
Crude protein	20.8 g
Crude lipid	4.8 g
Crude fiber	3.2 g
Crude ash	5.0 g
Moisture	8.0 g
Carbohydrate	58.2 g

---

Vitamin A	1000 IU
Vitamin D3	200 IU
Vitamin E	5.0 mg
Vitamin K3	0.5 mg
Vitamin B1	1.0 mg
Vitamin B2	1.1 mg
Vitamin B12	1.7 µg
Niacin	10.0 mg
Calcium pantothenate	1.6 mg
Folic acid	0.1 mg
Biotin	0.03 µg
Choline	0.23 g
Inositol	900 mg

---



71 kDa →