

In the format provided by the authors and unedited.

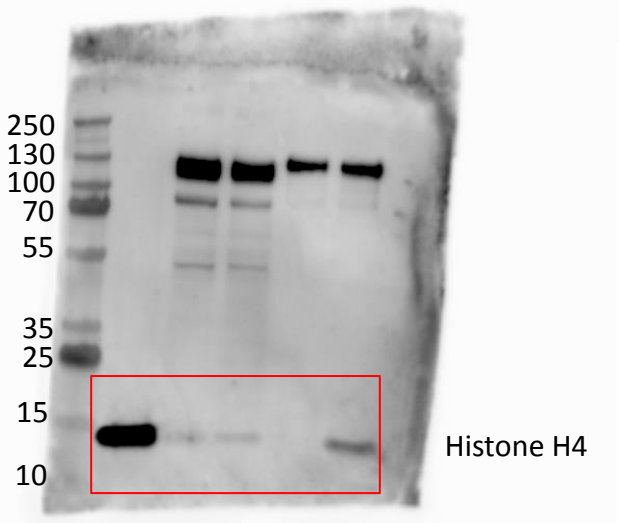
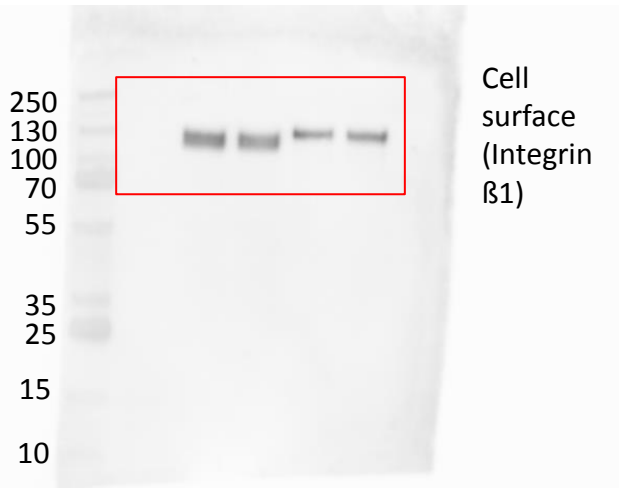
# Externalized histone H4 orchestrates chronic inflammation by inducing lytic cell death

Carlos Silvestre-Roig<sup>1,2,3,20\*</sup>, Quinte Braster<sup>1,2,3,20</sup>, Kanin Wichapong<sup>4</sup>, Ernest Y. Lee<sup>5</sup>, Jean Marie Teulon<sup>6</sup>, Nihel Berrebeh<sup>6</sup>, Janine Winter<sup>1</sup>, José M. Adrover<sup>7</sup>, Giancarlo Santiago Santos<sup>5</sup>, Alexander Froese<sup>8,9</sup>, Patricia Lemnitzer<sup>1</sup>, Almudena Ortega-Gómez<sup>1,3</sup>, Raphael Chevre<sup>1</sup>, Julian Marschner<sup>10</sup>, Ariane Schumski<sup>1,3</sup>, Carla Winter<sup>1,3</sup>, Laura Perez-Olivares<sup>1</sup>, Chang Pan<sup>1</sup>, Nicole Paulin<sup>1</sup>, Tom Schoufour<sup>2</sup>, Helene Hartwig<sup>1,2</sup>, Silvia González-Ramos<sup>1</sup>, Frits Kamp<sup>11</sup>, Remco T. A. Megens<sup>1,12</sup>, Kerri A. Mowen<sup>13,21</sup>, Matthias Gunzer<sup>14</sup>, Lars Maegdefessel<sup>3,15,16</sup>, Tilman Hackeng<sup>4</sup>, Esther Lutgens<sup>1,17</sup>, Mat Daemen<sup>2</sup>, Julia von Blume<sup>18</sup>, Hans-Joachim Anders<sup>10</sup>, Viacheslav O. Nikolaev<sup>8,9</sup>, Jean-Luc Pellequer<sup>6</sup>, Christian Weber<sup>1,3,4</sup>, Andrés Hidalgo<sup>1,7</sup>, Gerry A. F. Nicolaes<sup>4</sup>, Gerard C. L. Wong<sup>5</sup> & Oliver Soehnlein<sup>1,2,3,16,19\*</sup>

<sup>1</sup>Institute for Cardiovascular Prevention (IPEK), LMU München, Munich, Germany. <sup>2</sup>Department of Pathology, AMC, Amsterdam, The Netherlands. <sup>3</sup>German Center for Cardiovascular Research (DZHK), Partner Site Munich Heart Alliance, Munich, Germany. <sup>4</sup>Department of Biochemistry, CARIM, University Maastricht, Maastricht, The Netherlands. <sup>5</sup>Department of Bioengineering, University of California, Los Angeles, Los Angeles, CA, USA. <sup>6</sup>Université Grenoble Alpes, CEA, CNRS, IBS, Grenoble, France. <sup>7</sup>Area of Developmental and Cell Biology, Fundación Centro Nacional de Investigaciones Cardiovasculares Carlos III (CNIC), Madrid, Spain. <sup>8</sup>Institute of Experimental Cardiovascular Research, University Medical Center Hamburg-Eppendorf, Hamburg, Germany. <sup>9</sup>German Center for Cardiovascular Research (DZHK), Partner Site Hamburg/Kiel/Lübeck, Hamburg, Germany. <sup>10</sup>Medizinische Klinik und Poliklinik IV, LMU München, Munich, Germany. <sup>11</sup>BMC, Metabolic Biochemistry, LMU München, Munich, Germany. <sup>12</sup>Department of Biomedical Engineering, CARIM, University Maastricht, Maastricht, The Netherlands. <sup>13</sup>The Scripps Research Institute, La Jolla, CA, USA. <sup>14</sup>Institute for Experimental Immunology and Imaging, University Hospital Essen, Essen, Germany. <sup>15</sup>Department of Vascular and Endovascular Surgery, Technical University Munich, Munich, Germany. <sup>16</sup>Department of Medicine Solna, Karolinska Institute, Stockholm, Sweden. <sup>17</sup>Department of Medical Biochemistry, AMC, Amsterdam, The Netherlands. <sup>18</sup>Max Planck Institute of Biochemistry, Martinsried, Germany. <sup>19</sup>Department of Physiology and Pharmacology (FyFa), Karolinska Institutet, Stockholm, Sweden. <sup>20</sup>These authors contributed equally: Carlos Silvestre-Roig, Quinte Braster. <sup>21</sup>Deceased: Kerri A. Mowen. \*e-mail: [oliver.soehnlein@gmail.com](mailto:oliver.soehnlein@gmail.com); [carlos.silvestre@med.uni-muenchen.de](mailto:carlos.silvestre@med.uni-muenchen.de)

1 % input H4 (rec)  
 1 %input (cells)  
 1 %input (cells)  
 SA-pulldown (cells)  
 SA-pulldown

Histone (H4) + - + - +  
 Sulfo-NHS-Biotin - + + + +



1 % input H4 (rec)  
 1 %input (cells)  
 1 %input (cells)  
 SA-pulldown (cells)  
 SA-pulldown

Histone (H4) + - + - +  
 Sulfo-NHS-Biotin - + + + +

