

Sex pilus specific bacteriophage to drive bacterial population towards antibiotic sensitivity.

Joan Colom¹, Diego Batista², Abiyad Baig¹, Ying Tang¹, Siyang Liu¹, Fangzhong Yuan¹, Aouatif Belkhiri¹, Lucas Marcelino², Fernanda Barbosa², Marcela Rubio², Robert Atterbury¹, Angelo Berchieri² and Paul Barrow^{1*}.

¹School of Veterinary Medicine and Science, University of Nottingham, Sutton Bonington, Leicestershire, LE12 5RD UK.

²School of Agricultural and Veterinary Sciences, São Paulo State University (FCAV/UNESP), São Paulo, 14884-900, Brazil.

* Corresponding author

E-mail: Paul.barrow@nottingham.ac.uk

Phone: +44 115 951 6428

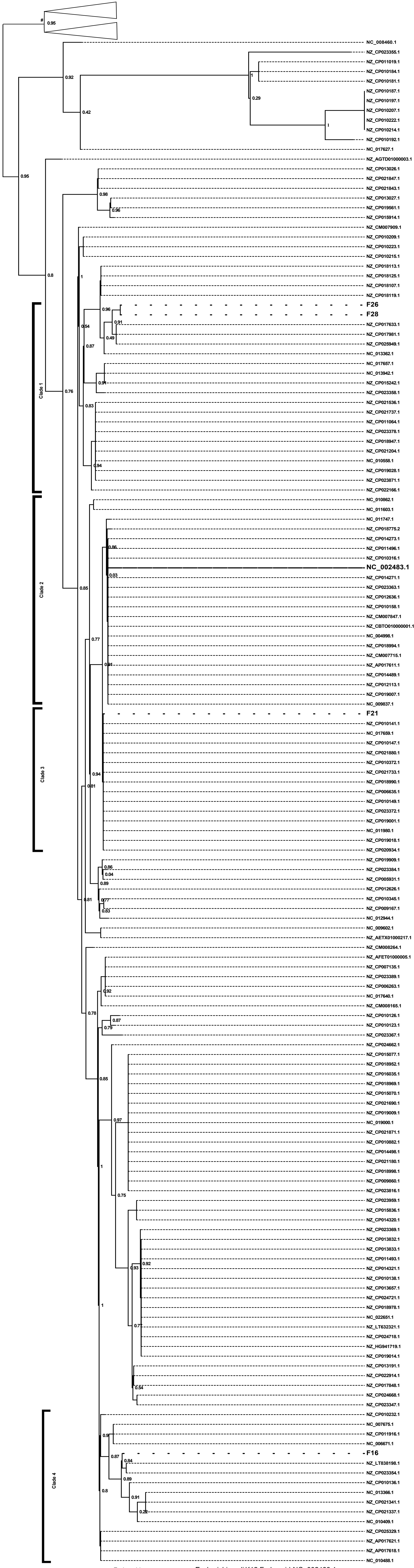


Figure S1. The maximum likelihood comparison of the nucleotide sequences of *traA* from F-plasmids present in *E. coli* and *E. faecalis* strains.

#Clades collapsed for the clarity of the presentation are the *traA* sequences from published plasmids distantly related to the F-plasmids in this study.