

Figure S1. Effects of SMC1 knockdown on cell proliferation, migration and invasion. (A) siRNAs against SMC1 were designed, and the transfection efficiency was determined via western blotting in SW620 cells. (B) Cell proliferation was examined by MTT assays in SW620 cells transfected with NC, siSMC1-1 or siSMC1-2. (C) SW620 cell migration and invasion were measured by Transwell assays following transfection with NC, siSMC1-1 or siSMC1-2. (D) Cell numbers were presented as the mean \pm SD of triplicate experiments. (E and F) Apoptosis of SW620 cells following SMC1 knockdown was determined via flow cytometry. * P <0.05, ** P <0.01. NC, negative control; OD, optical density; PI, propidium iodide; si(RNA), small interfering (RNA); SMC1, structural maintenance of chromosomes 1.

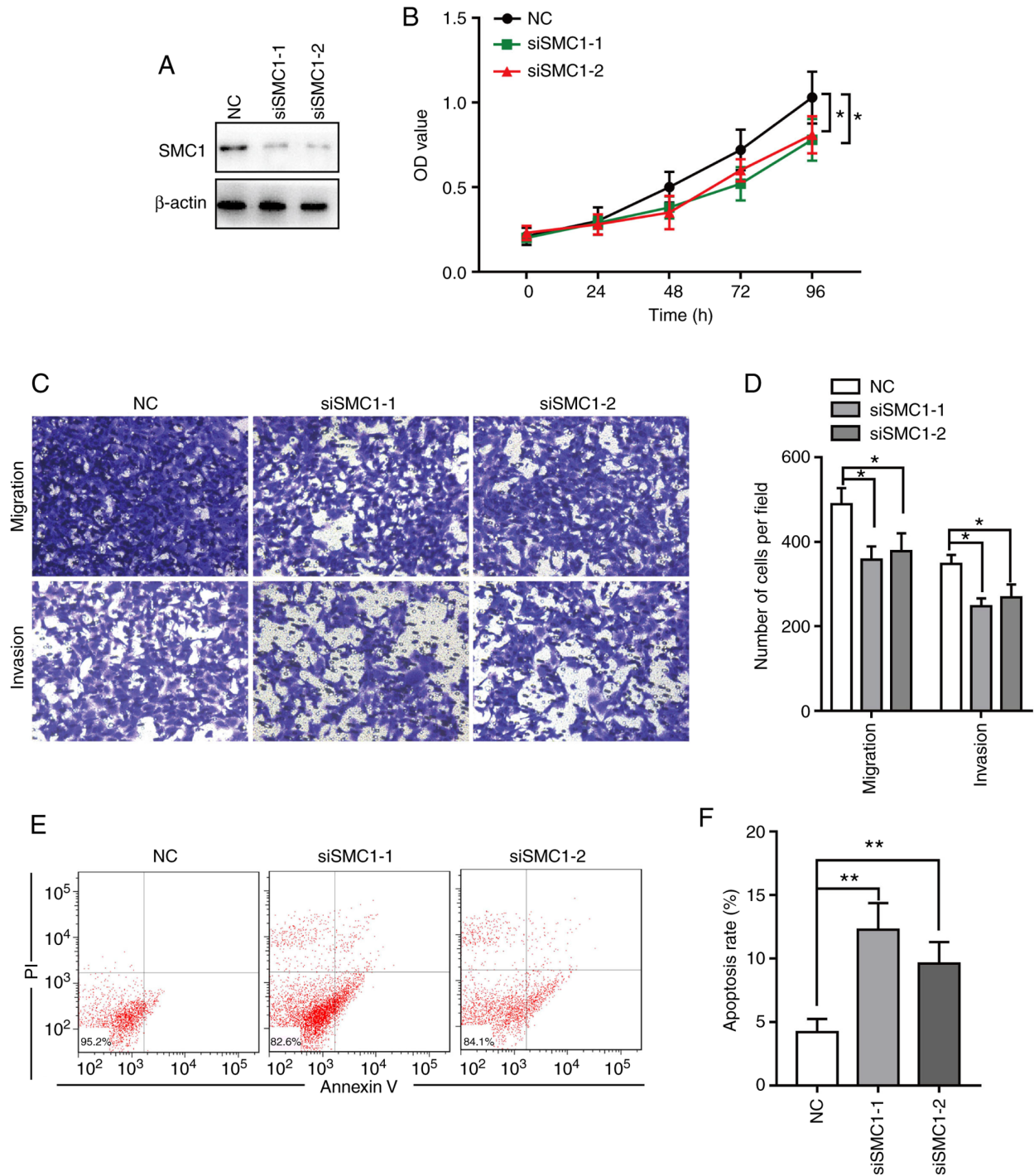


Figure S2. Expression of SMC1 *in vivo*. (A) Expression of SMC1 in xenografts formed from cells transduced with LV-shCont and LV-shSMC1 as determined via immunohistochemistry. (B) Expression of SMC1 in xenografts formed from cells transduced with LV-NC and LV-SMC1 as determined via immunohistochemistry. *P<0.05, **P<0.01. Cont, control; LV, lentivirus; NC, negative control; sh, short hairpin (RNA); SMC1, structural maintenance of chromosomes 1.

