

Supplementary Figures

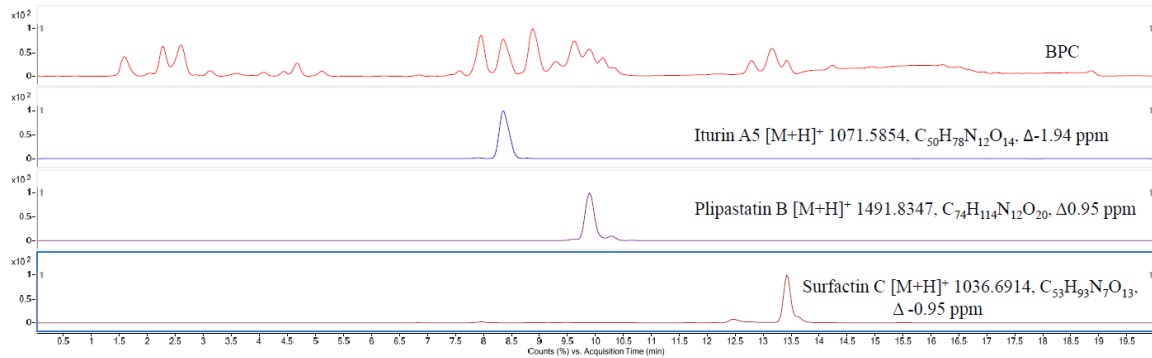


Fig S1. Detection of lipopeptides from *B. velezensis* DTU001 extract. Base Peak Chromatography of the crude extract (BPC, first line) and extracted ion chromatography indicating the presence of iturin A5 (second line), plipastatin B (third line) and surfactin C (fourth line).

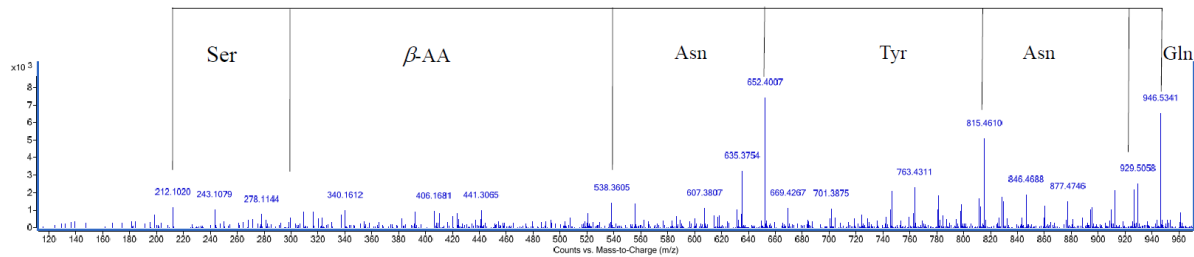


Fig S2. MS/MS fragmentation for iturin A5.

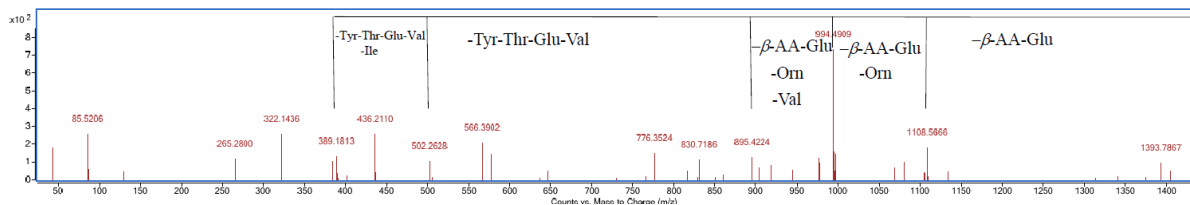


Fig S3. MS/MS fragmentation for plipastatin B.

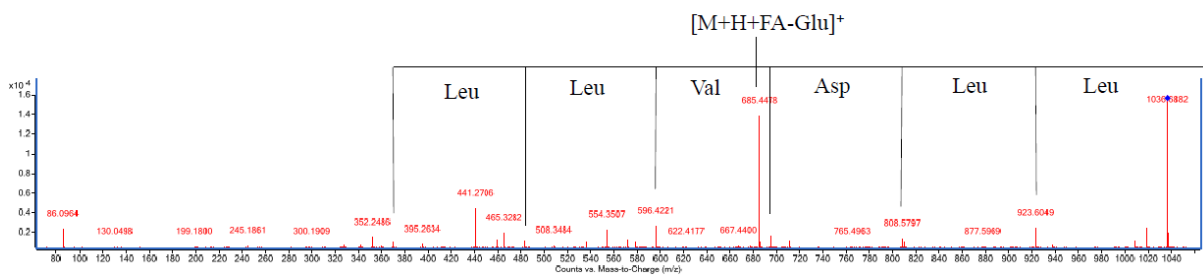


Fig S4. MS/MS fragmentation for surfactin C.