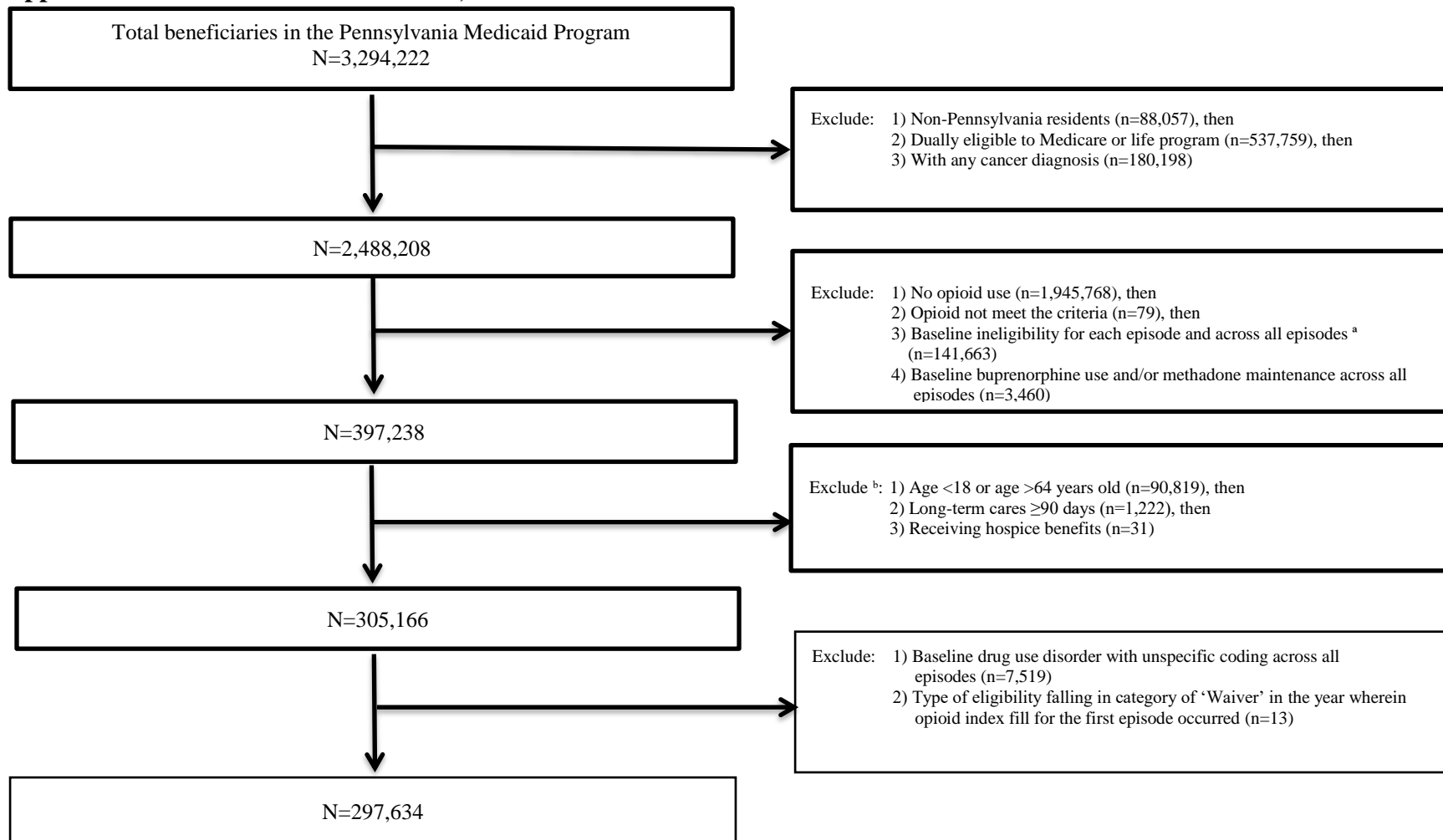


Appendix. Cohort Selection Flow Chart, 2010-2012



^aThose meeting any of following conditions were considered ineligible: (1) enrollment < 6 months before index fill; (2) overdose < 6 months before index fill; (3) opioid use disorder < 6 months before index fill. ^b Exclusion applies to the year wherein opioid index fill for the first episode occurred