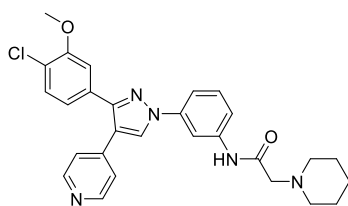
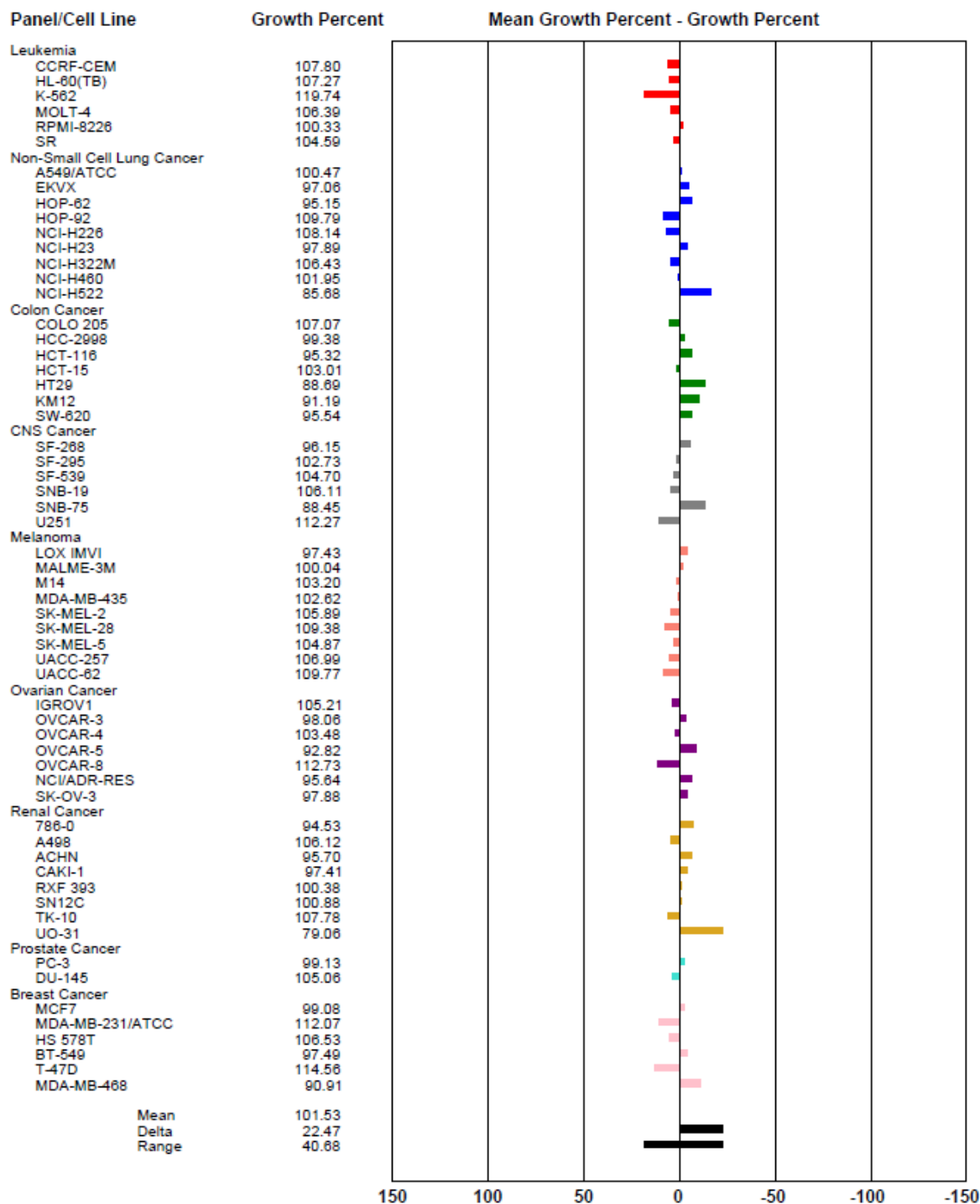


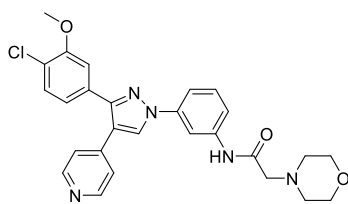
Supplementary Materials

NCI data (Single dose test mode)	2-9
NCI data(Five dose test mode)	10-13
Representative ¹ H NMR, ¹³ C NMR, and MS spectra	14-37

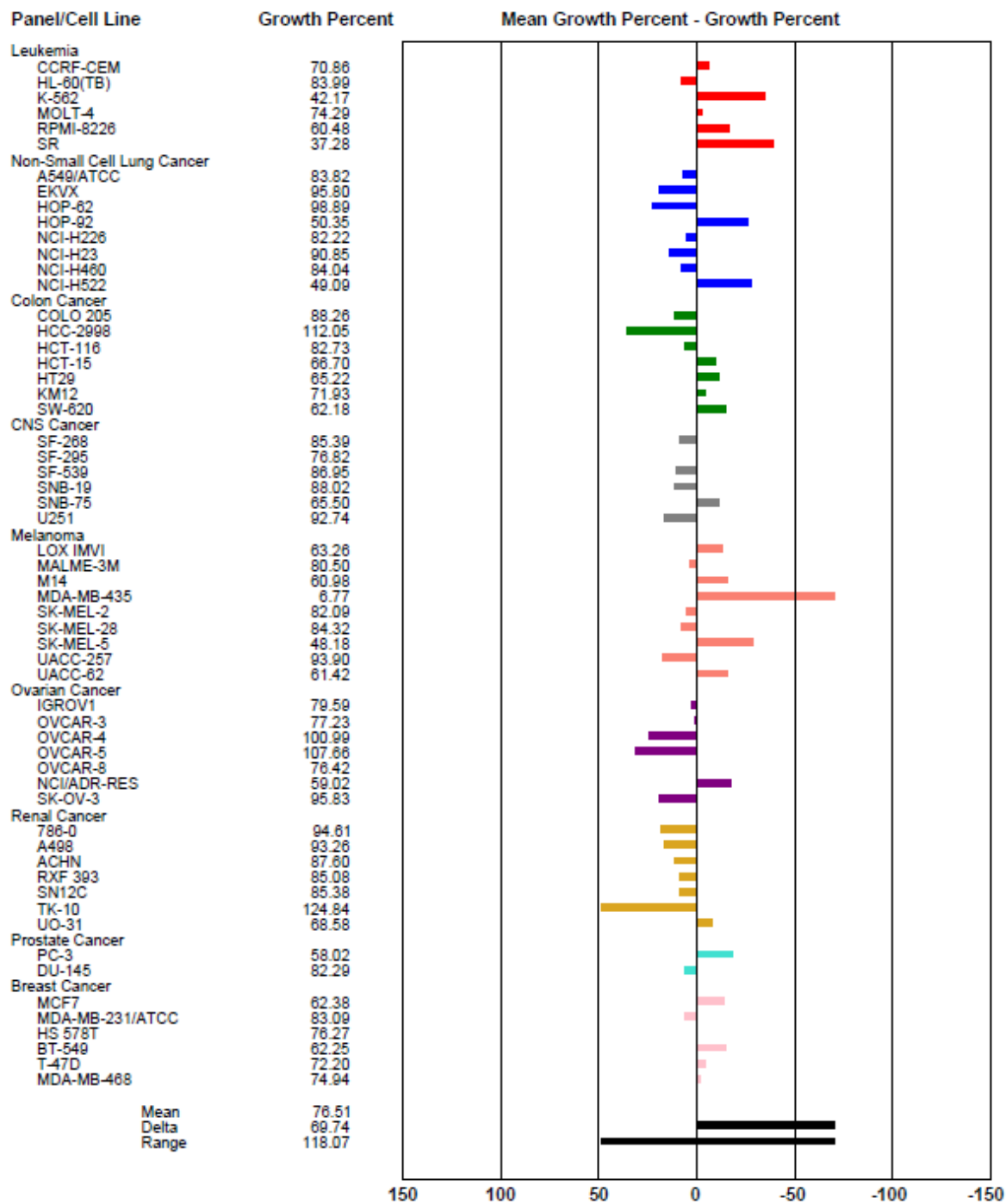


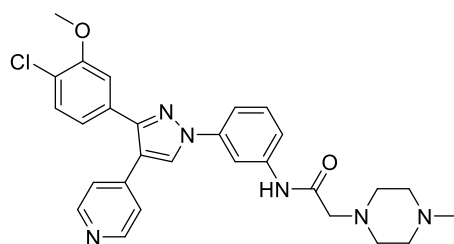
Compound 1a



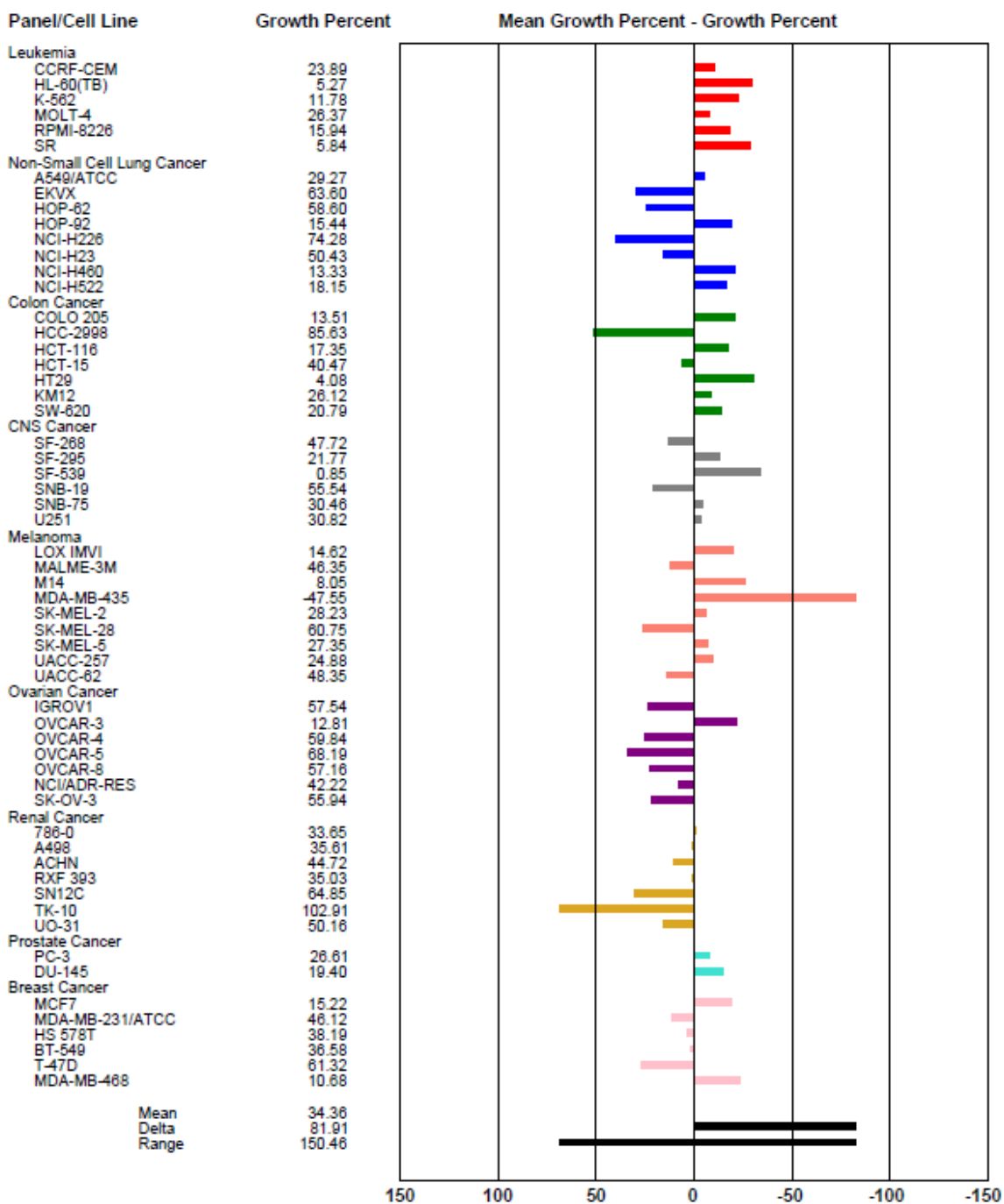


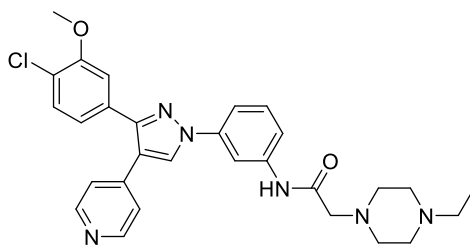
Compound 1b



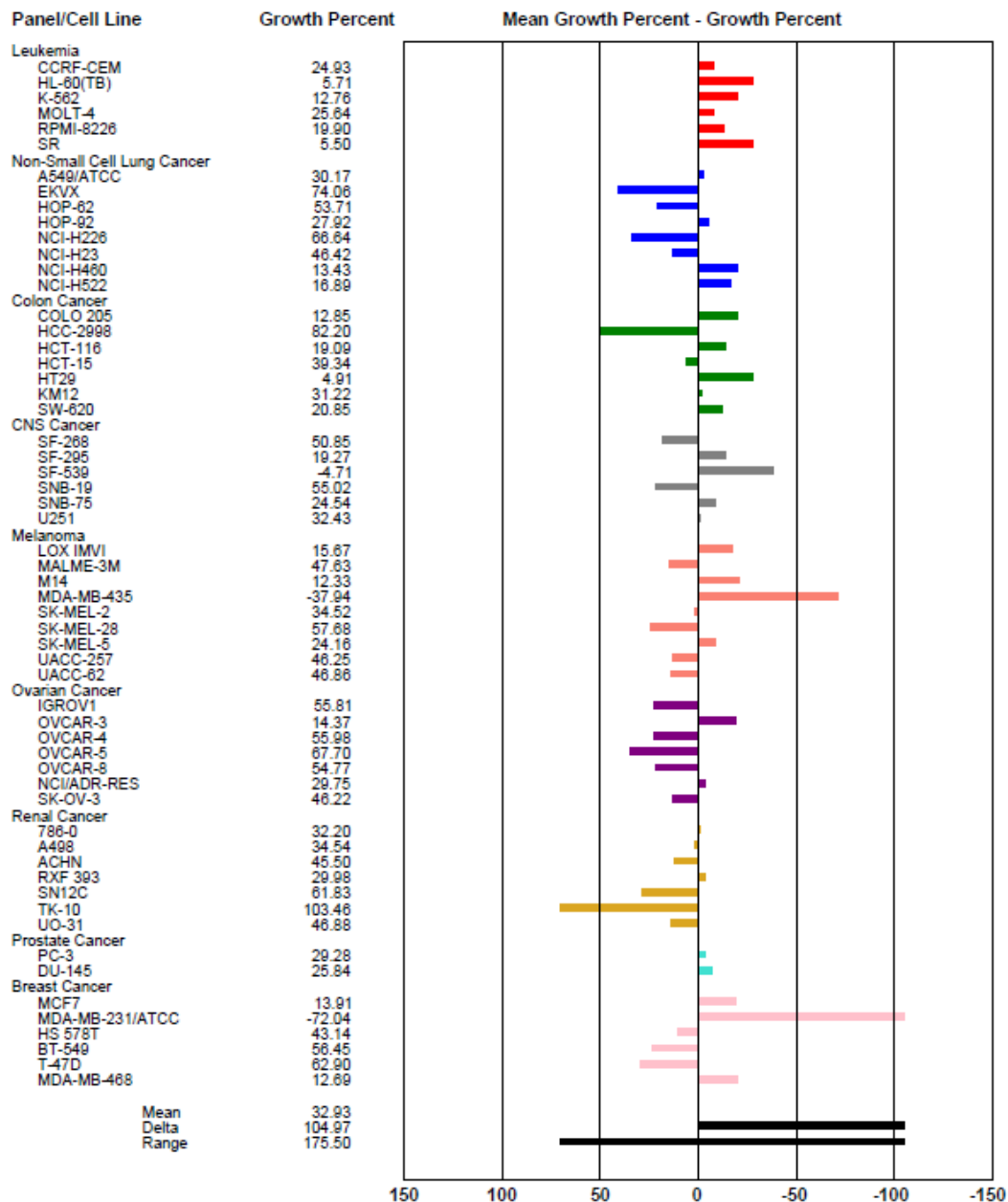


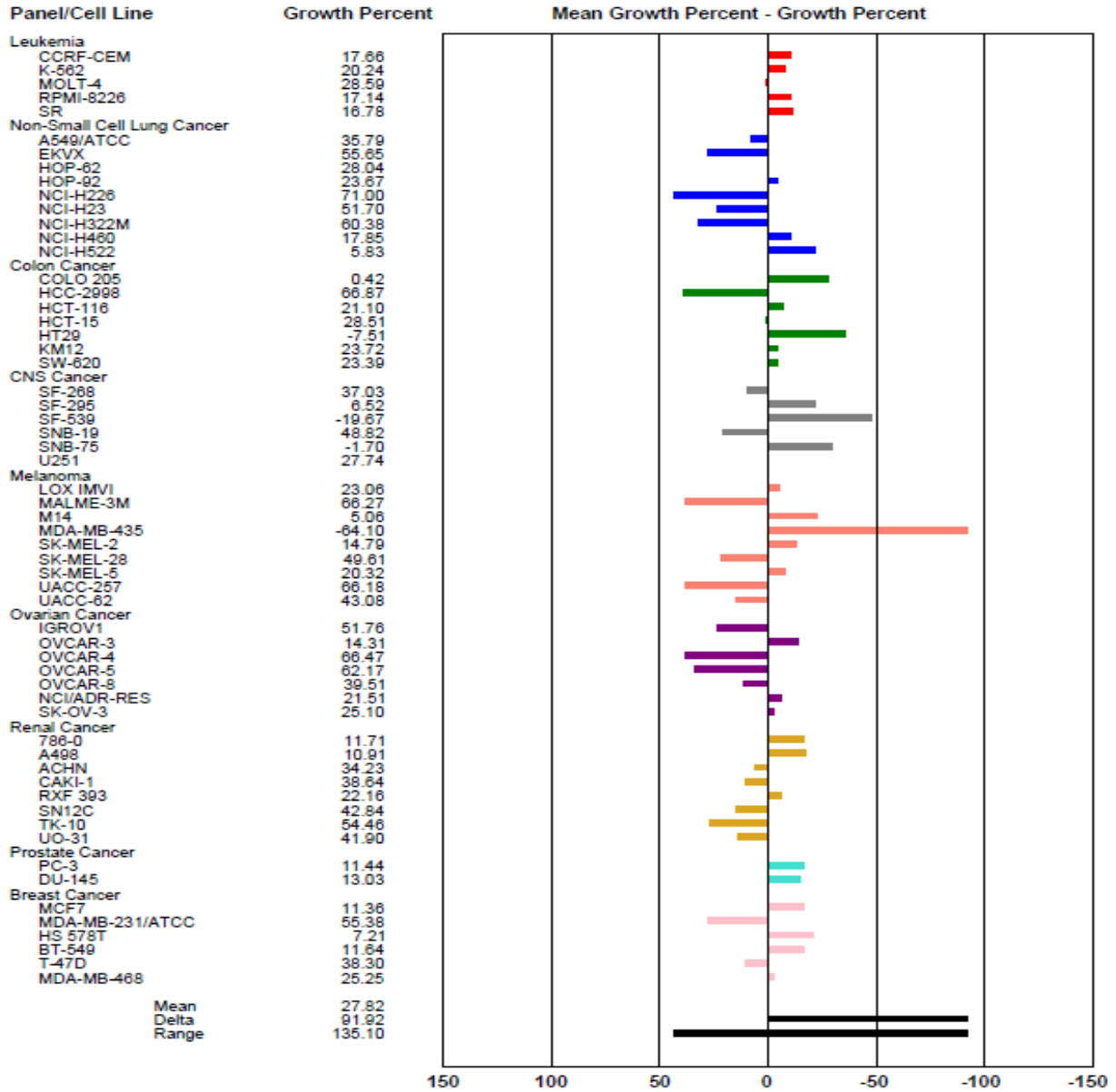
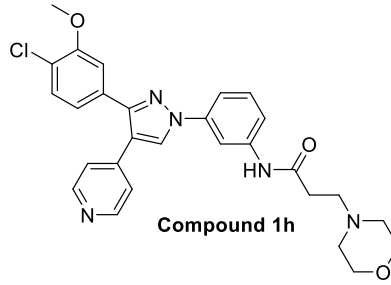
Compound 1c

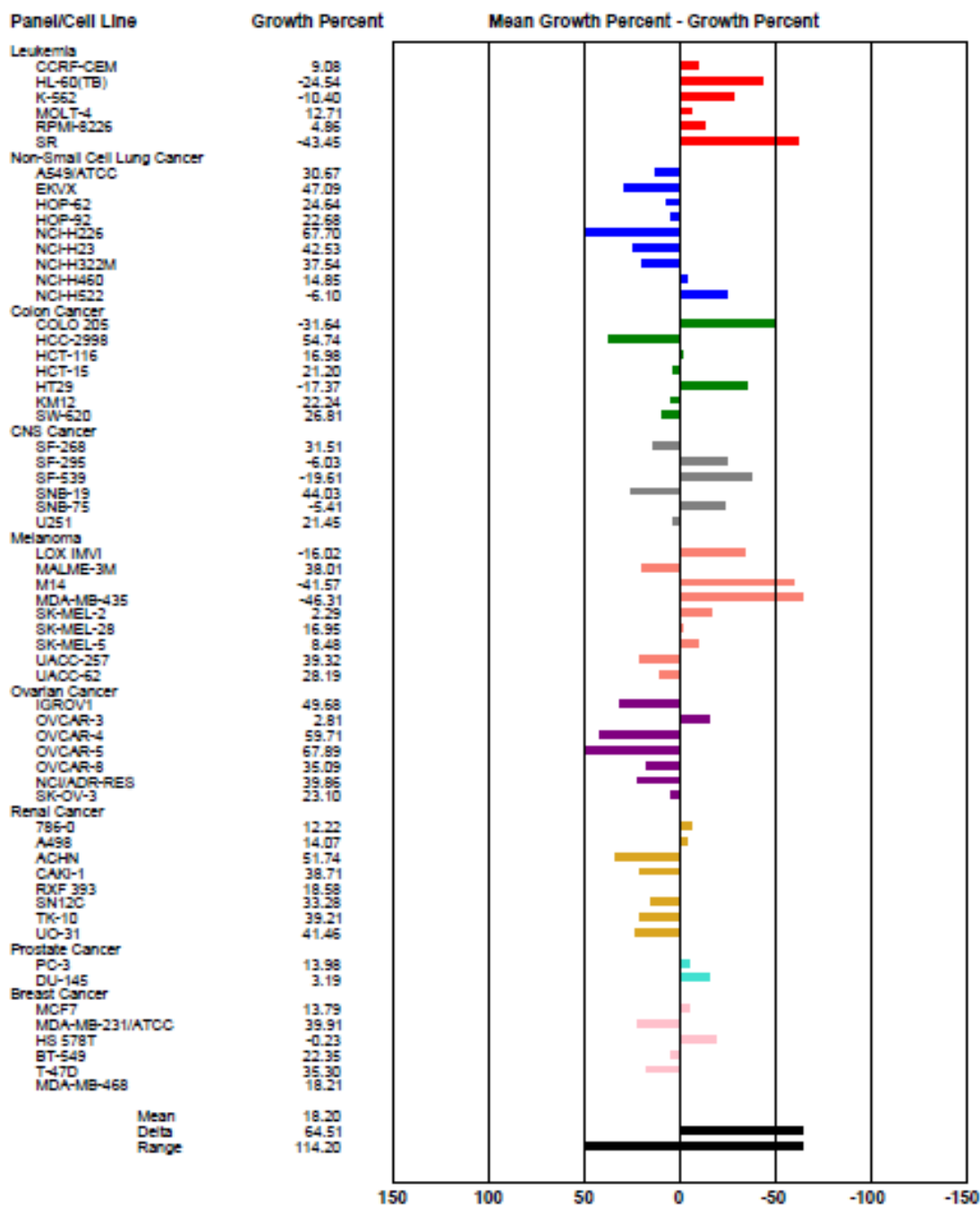
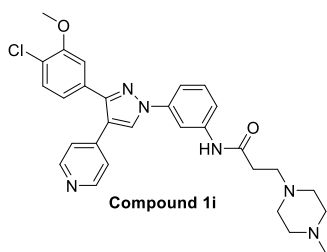


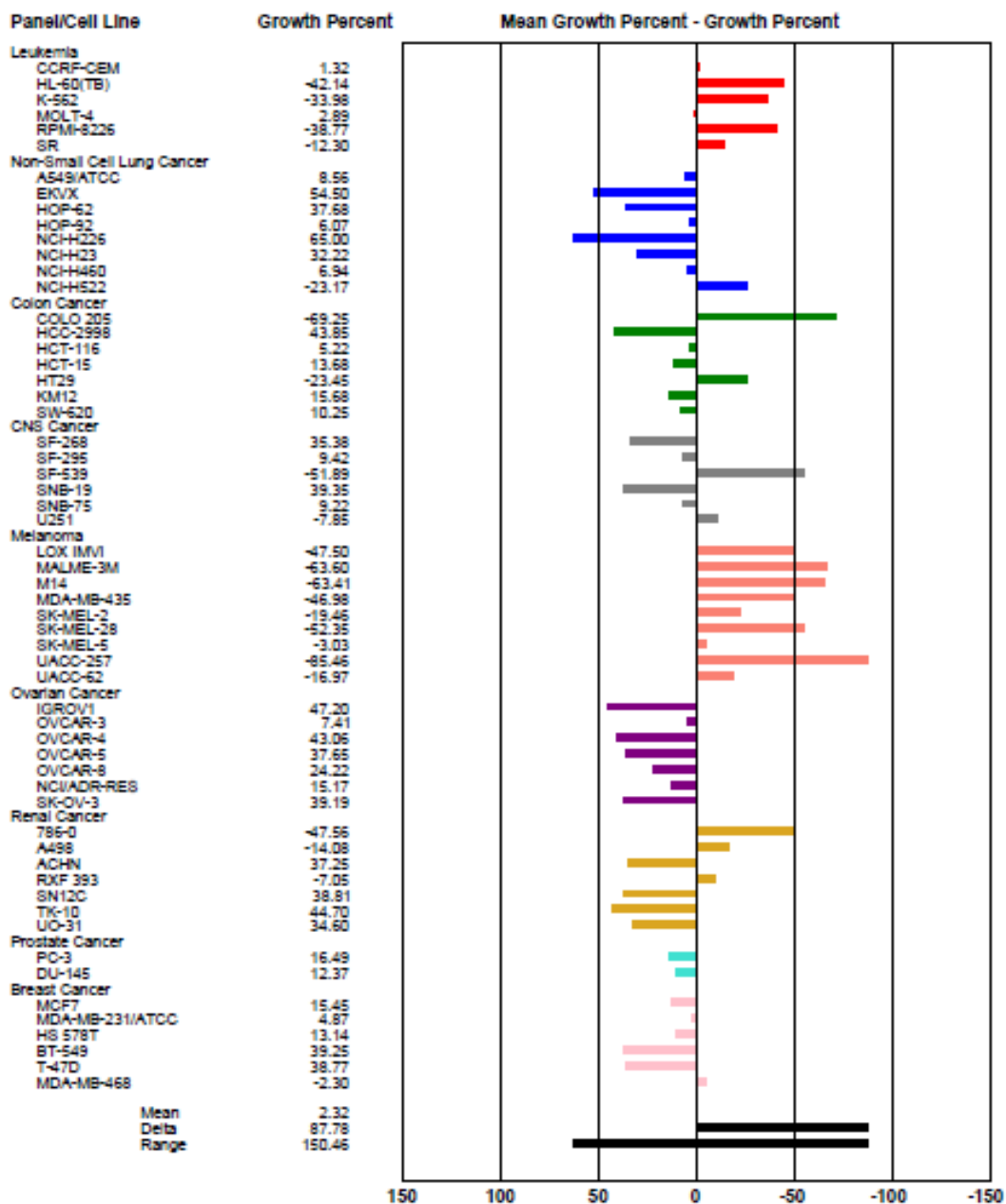
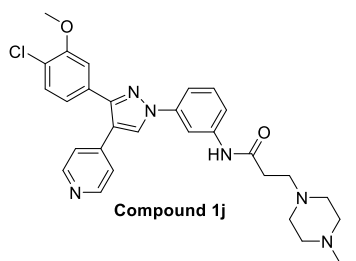


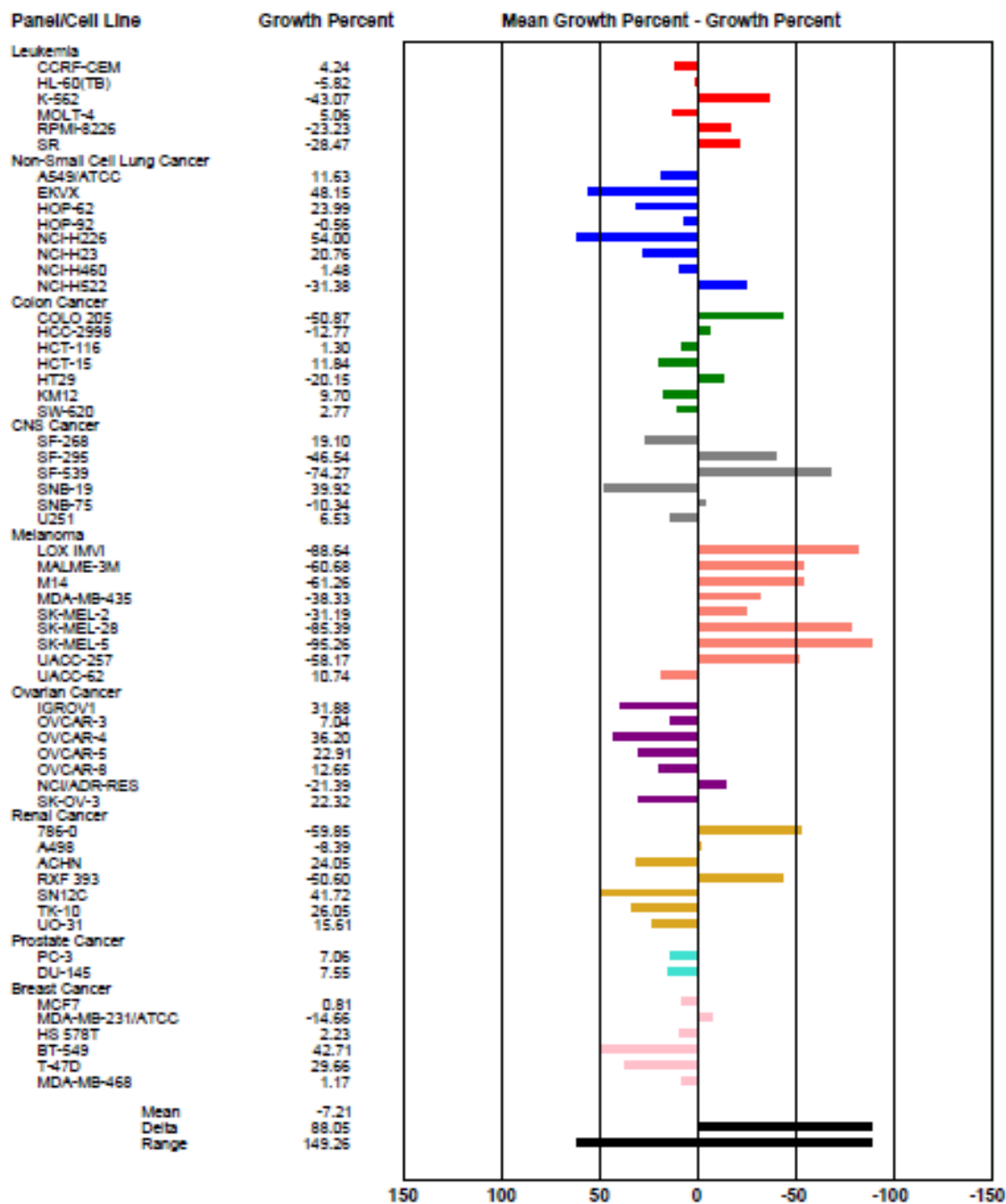
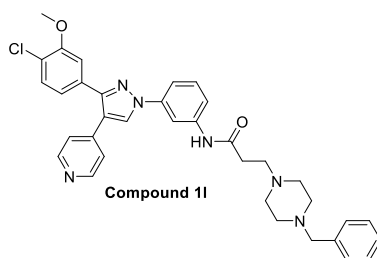
Compound 1d

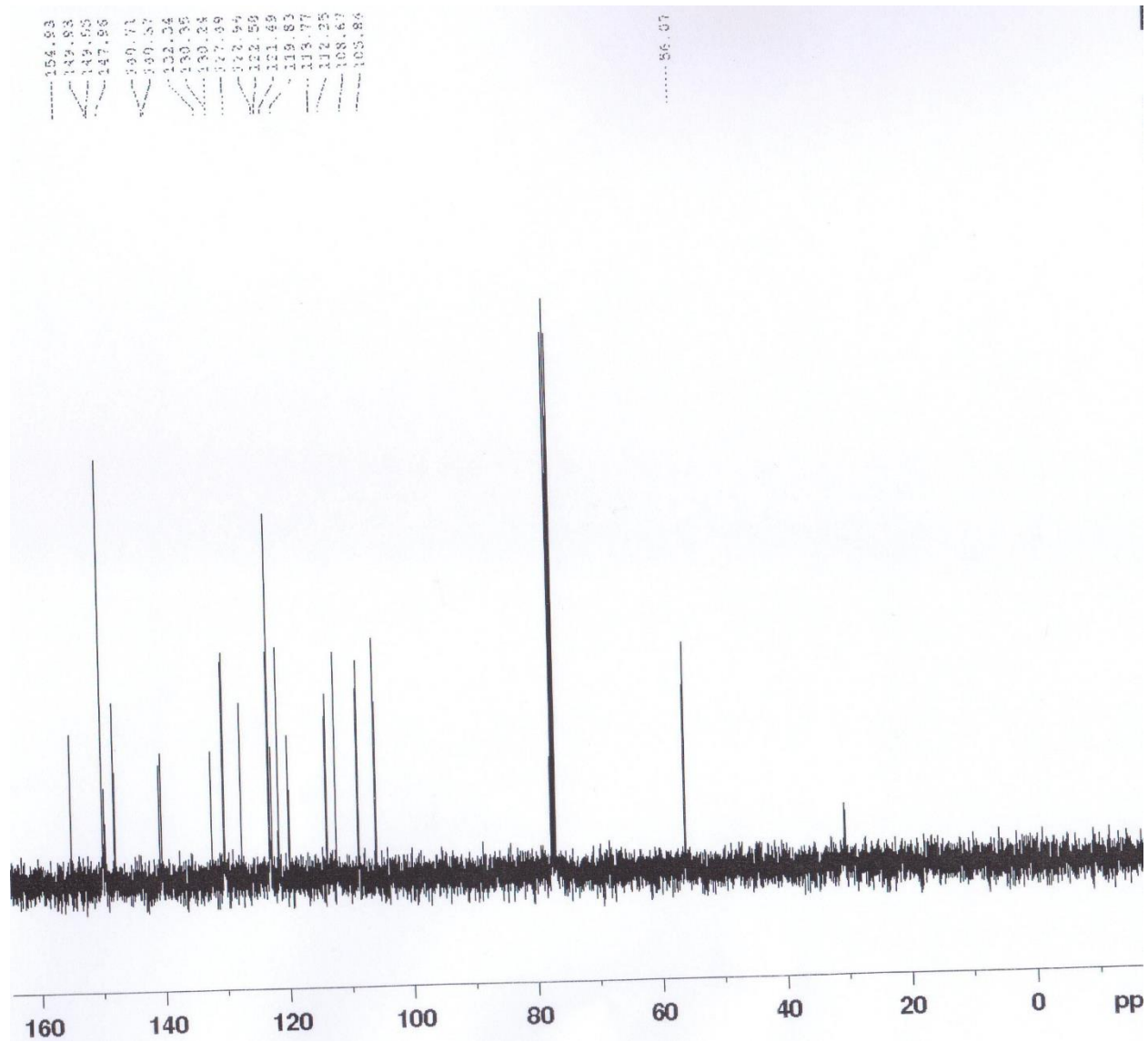
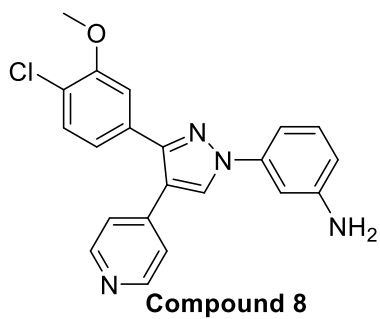


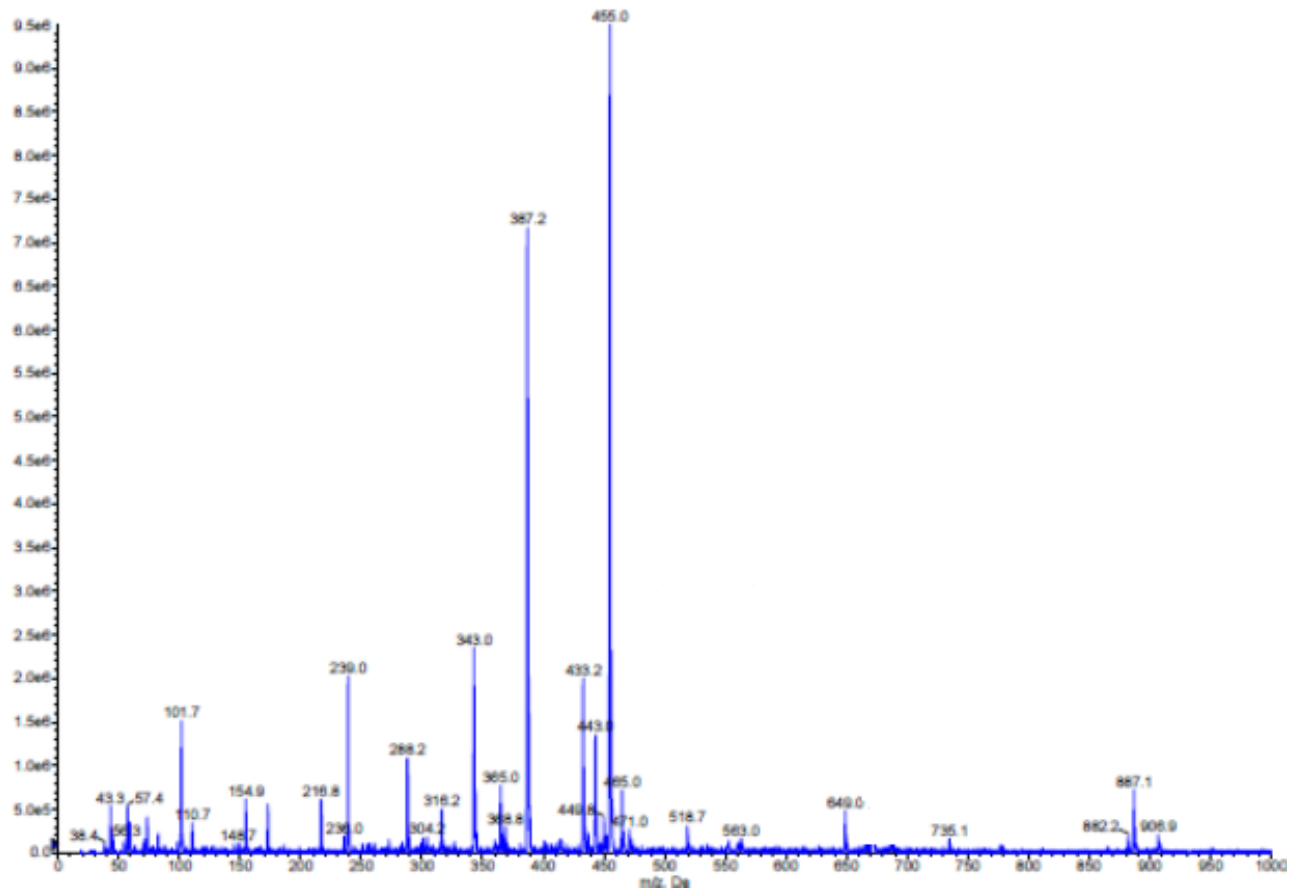
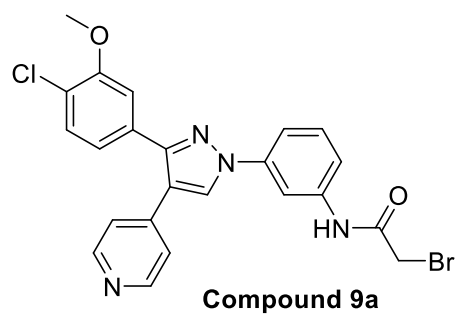


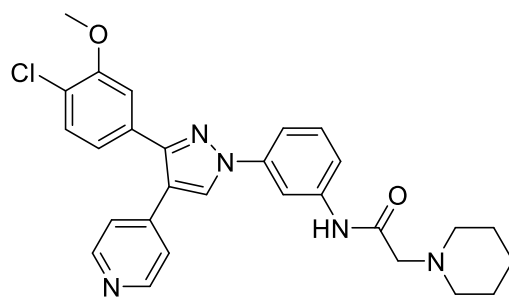




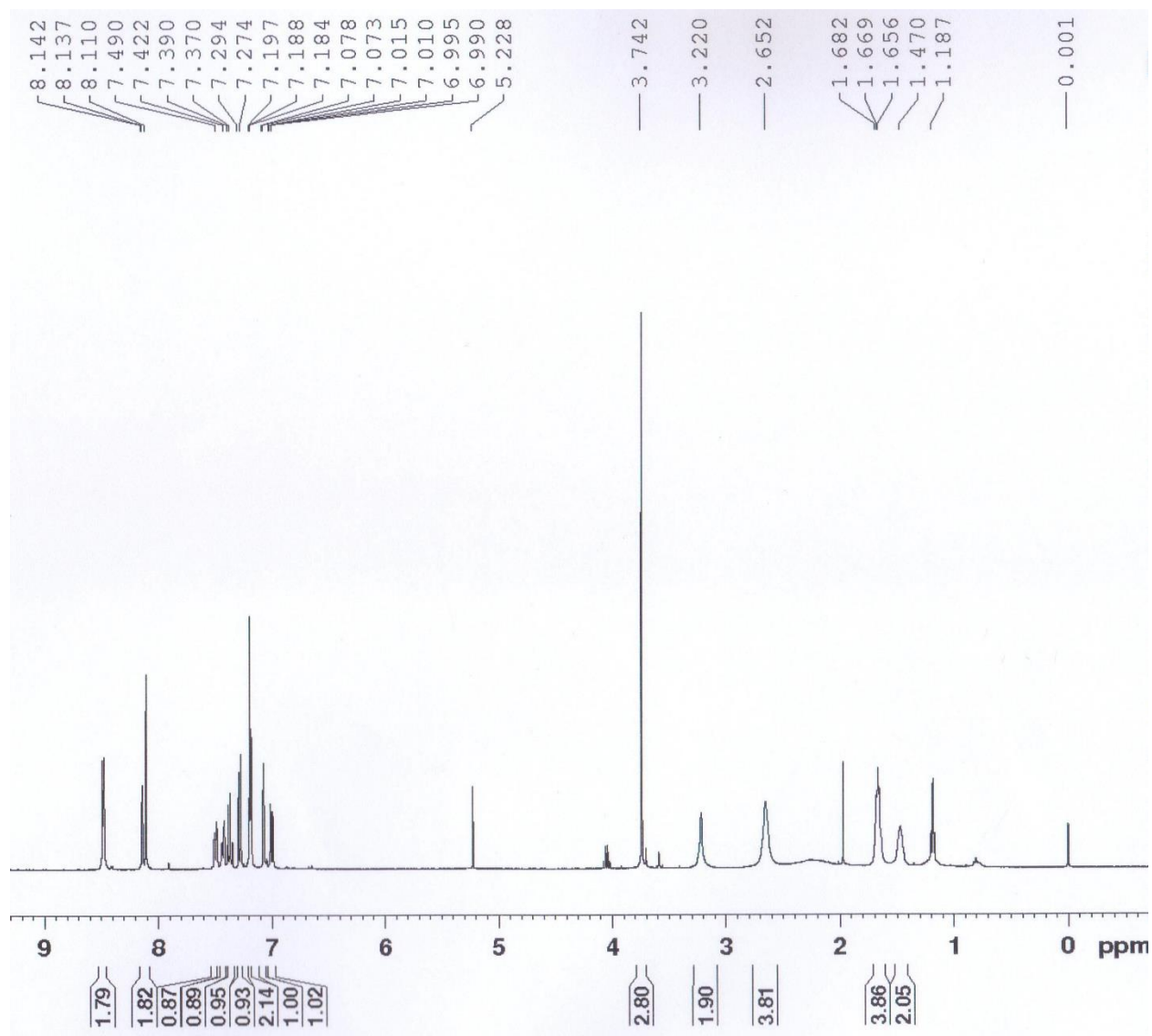


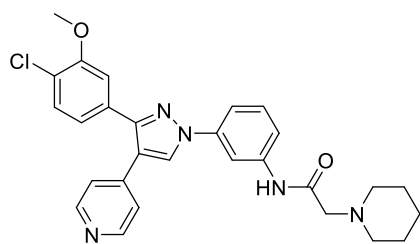




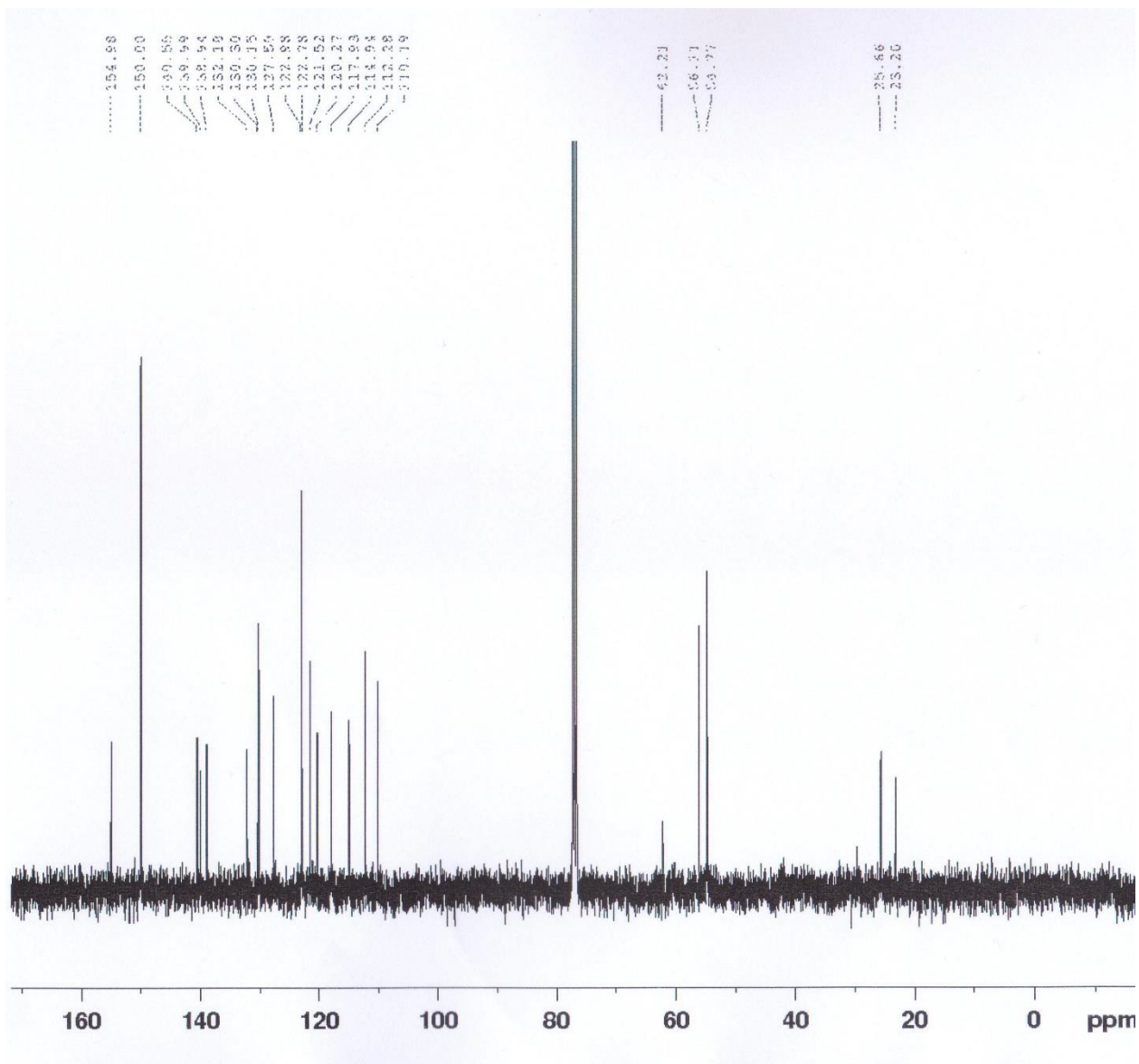


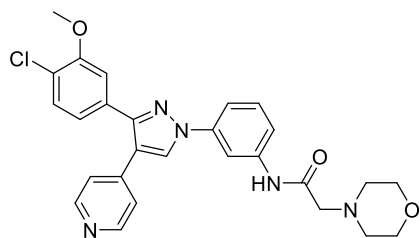
Compound 1a



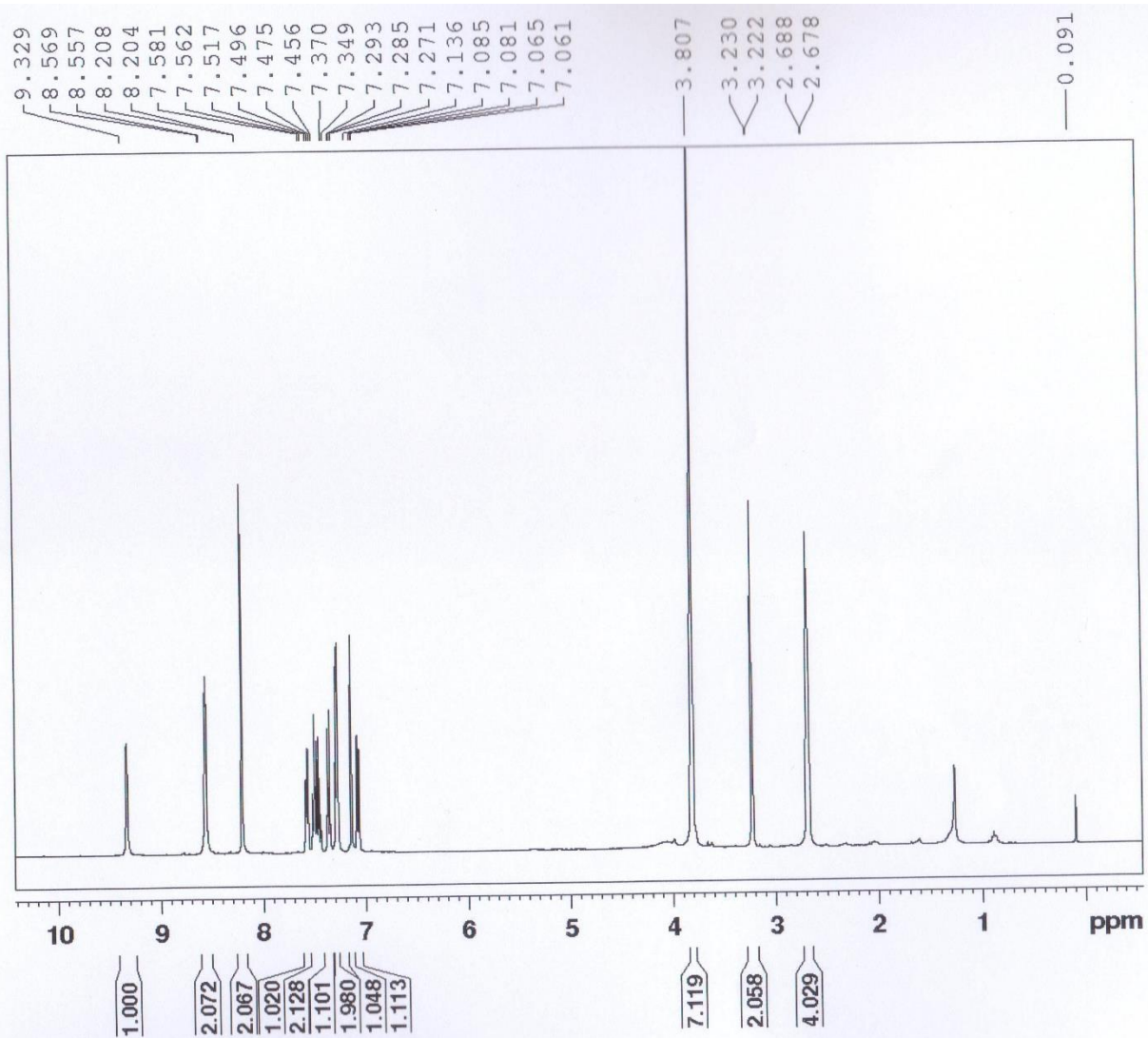


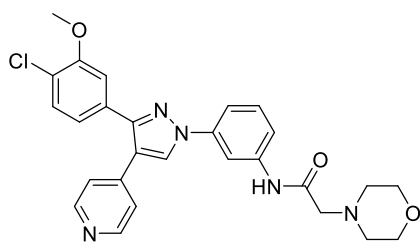
Compound 1a



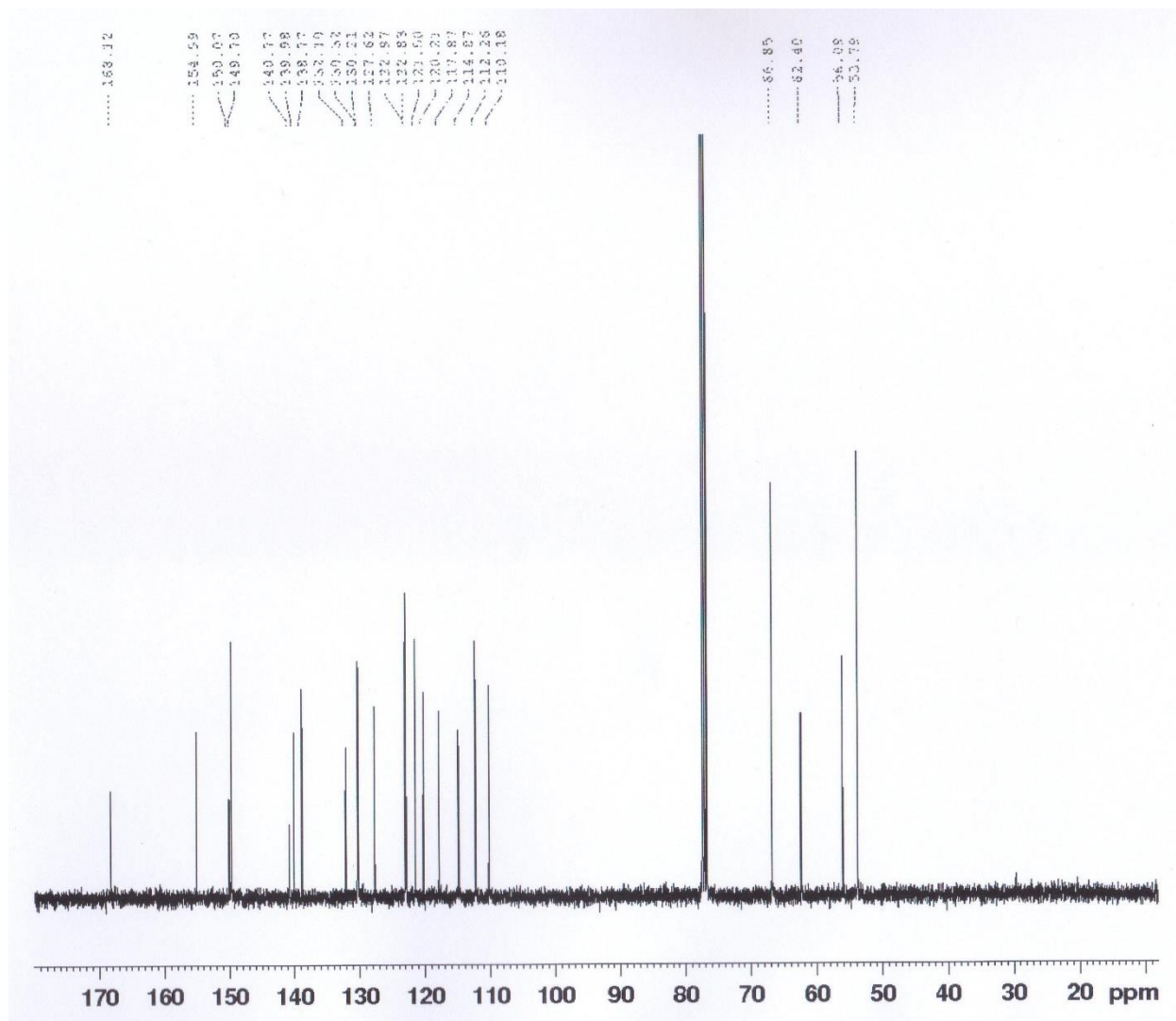


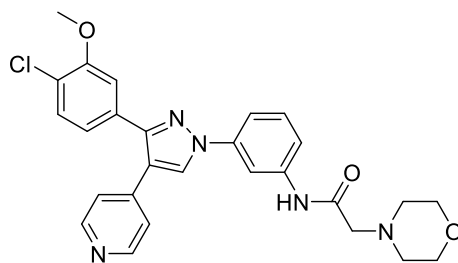
Compound 1b



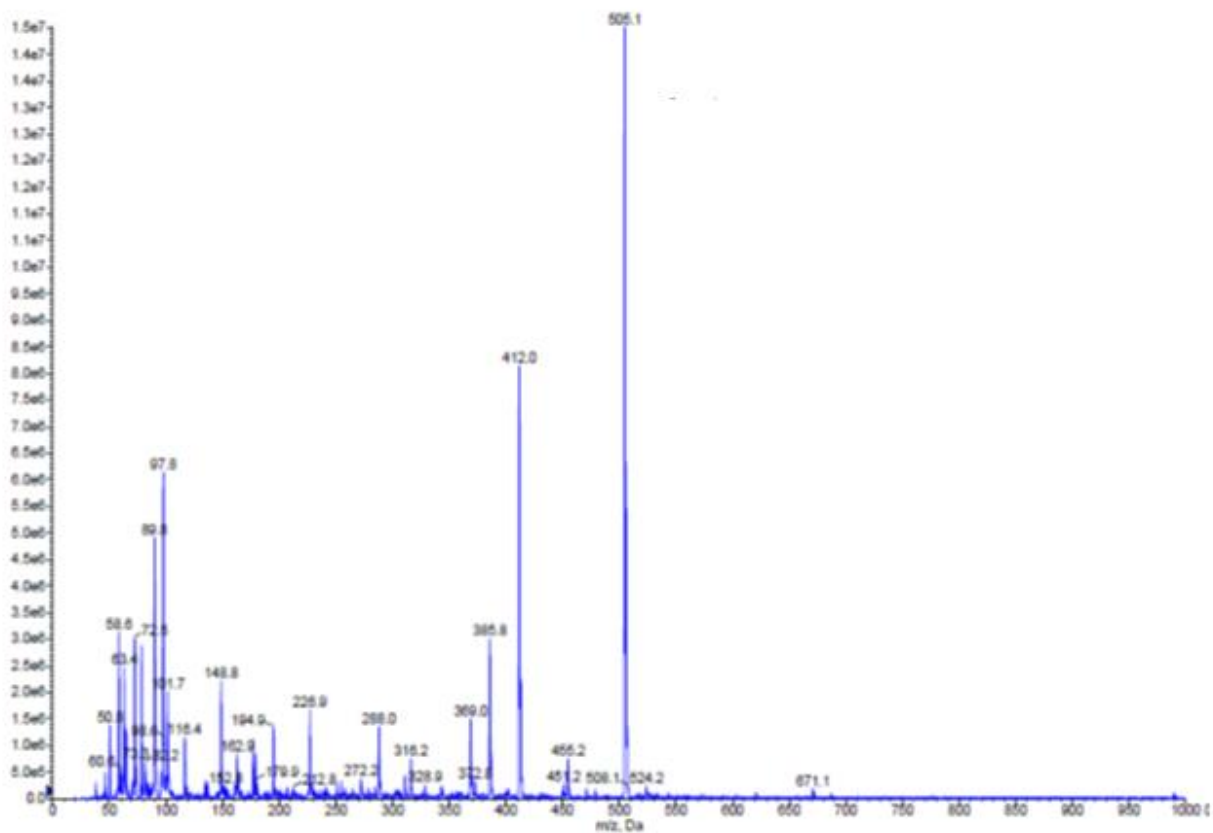


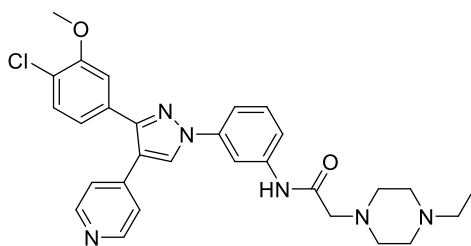
Compound 1b



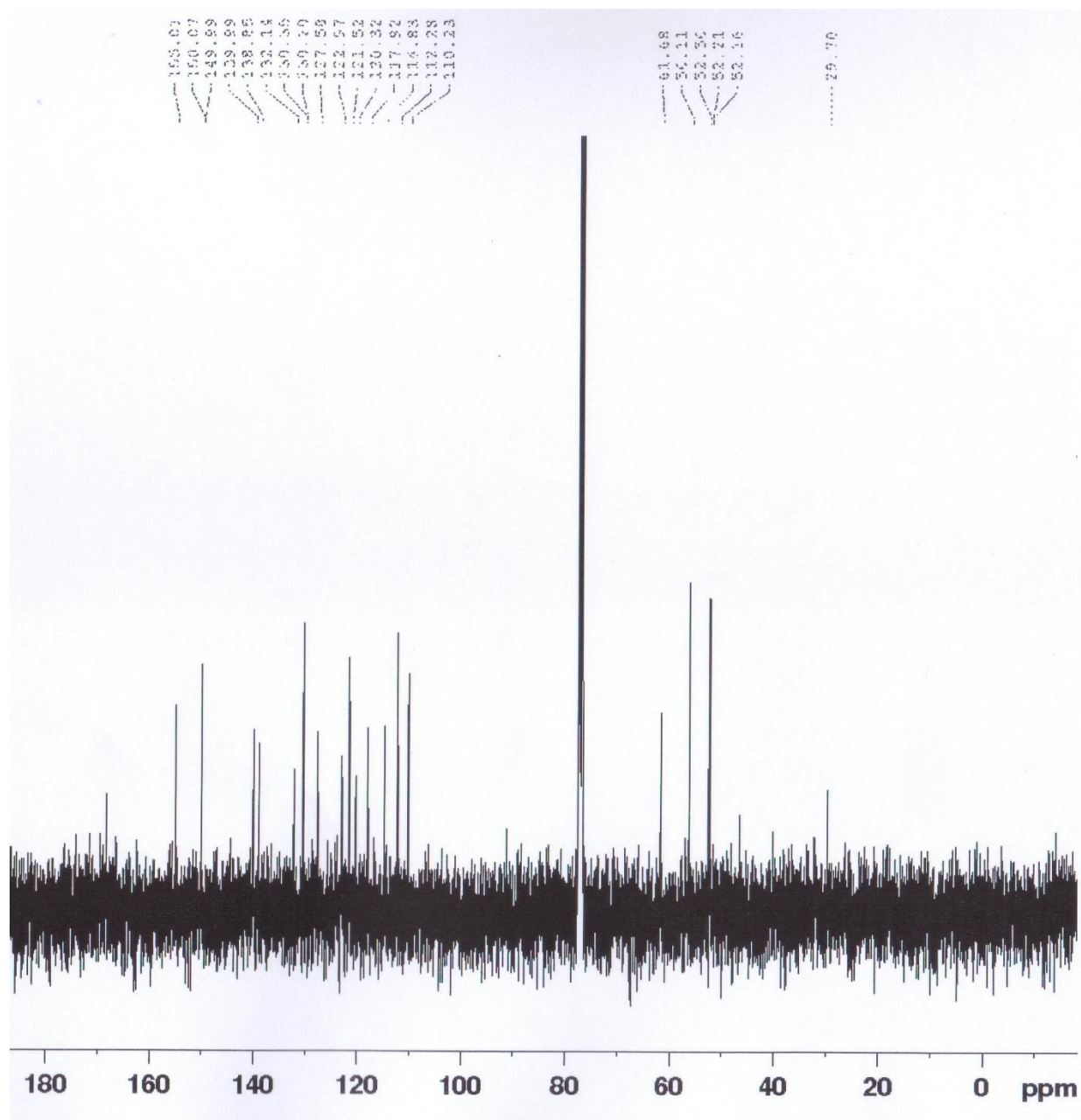


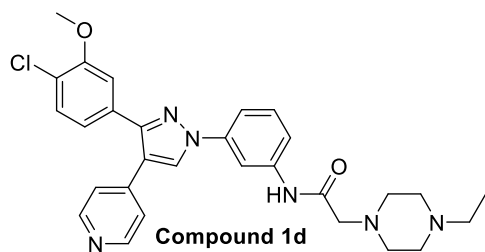
Compound 1b
Chemical Formula: $C_{27}H_{26}ClN_5O_3$
 $m/z + H^+$: 505.1



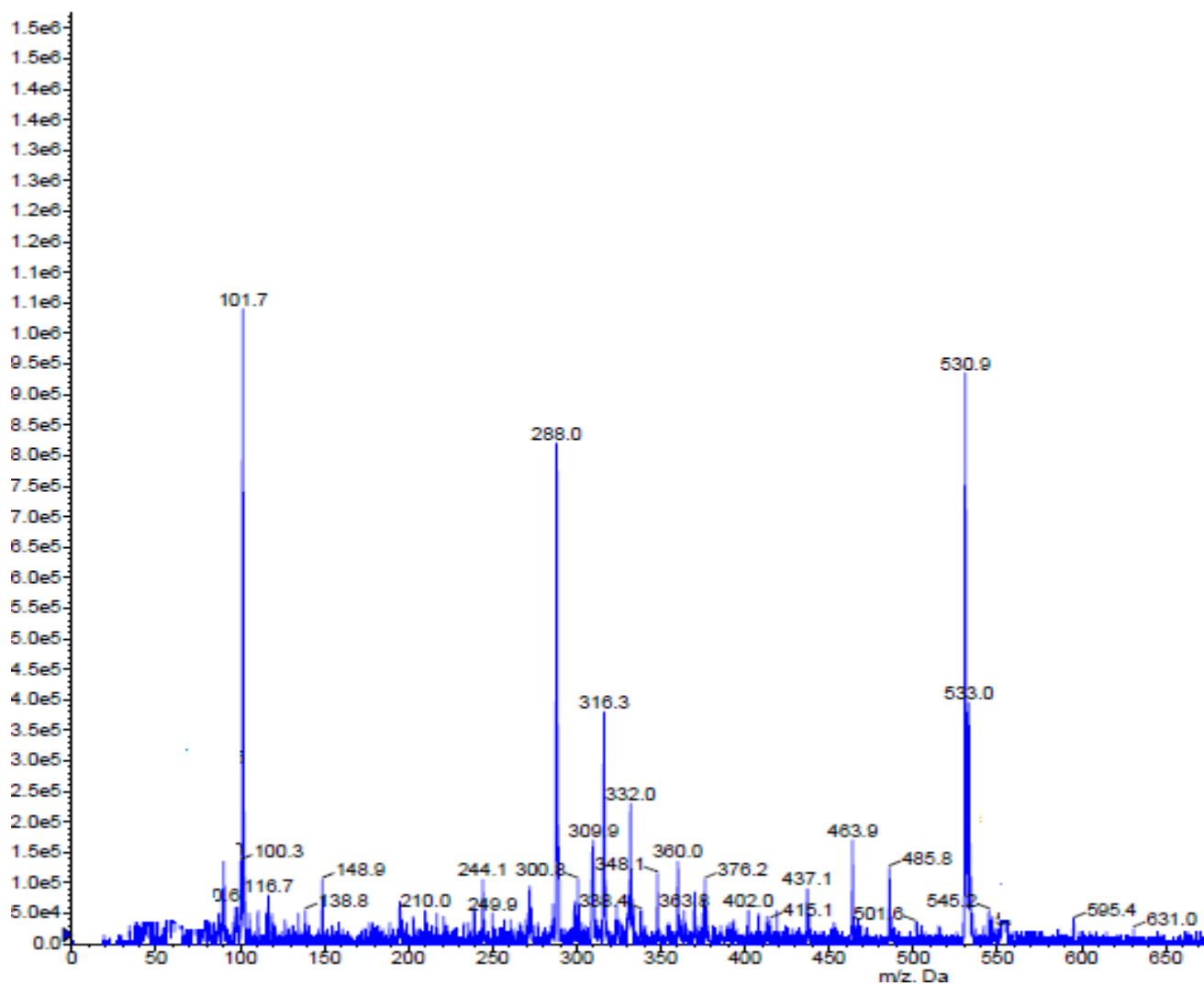


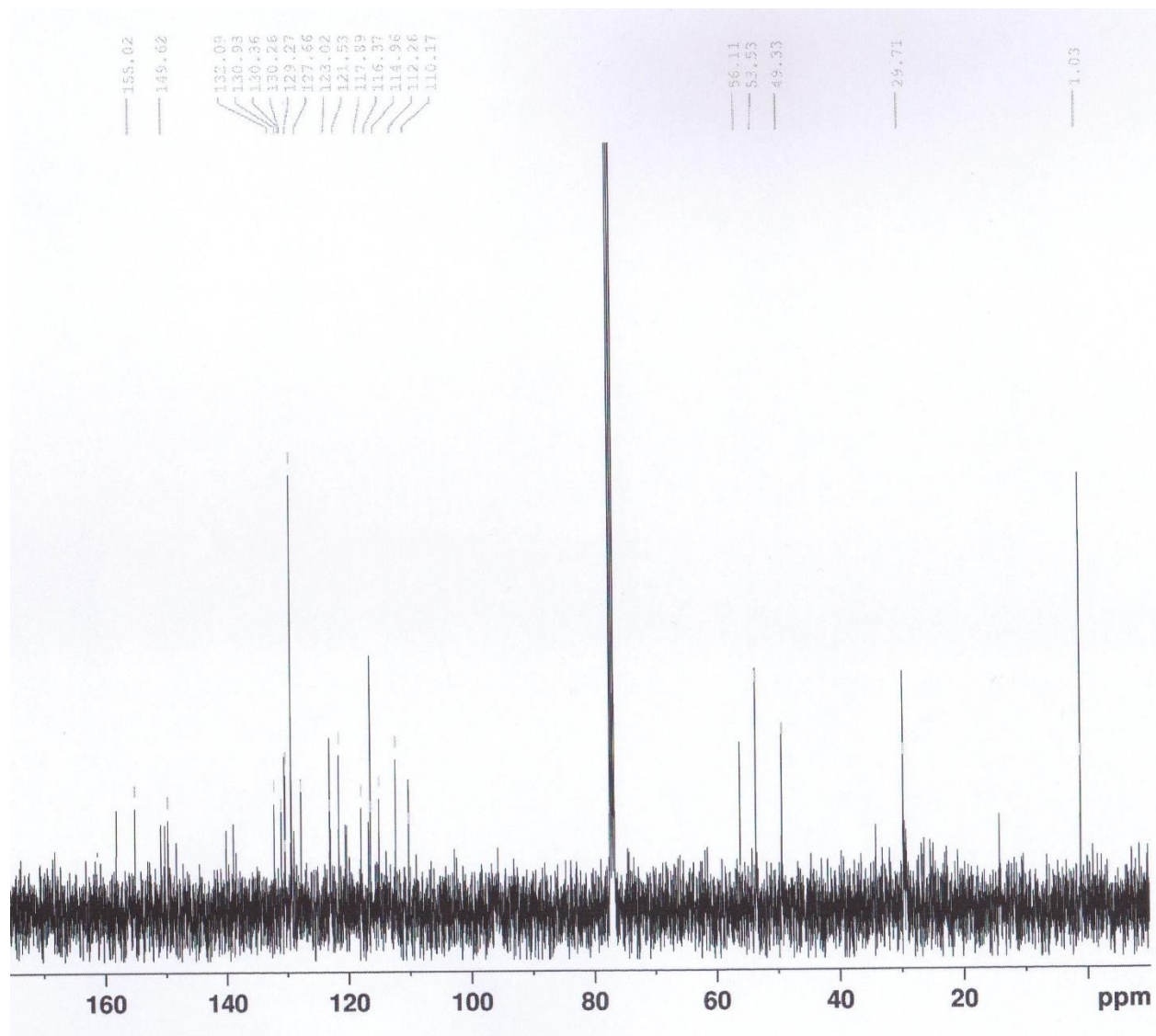
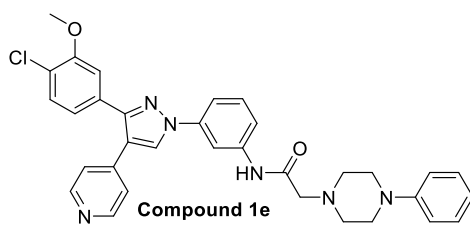
Compound 1d

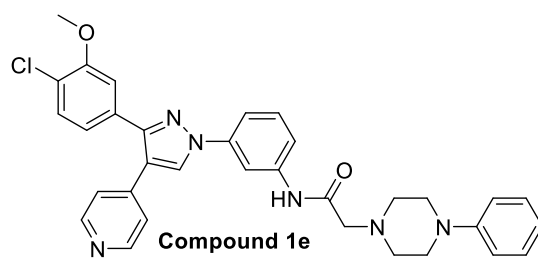




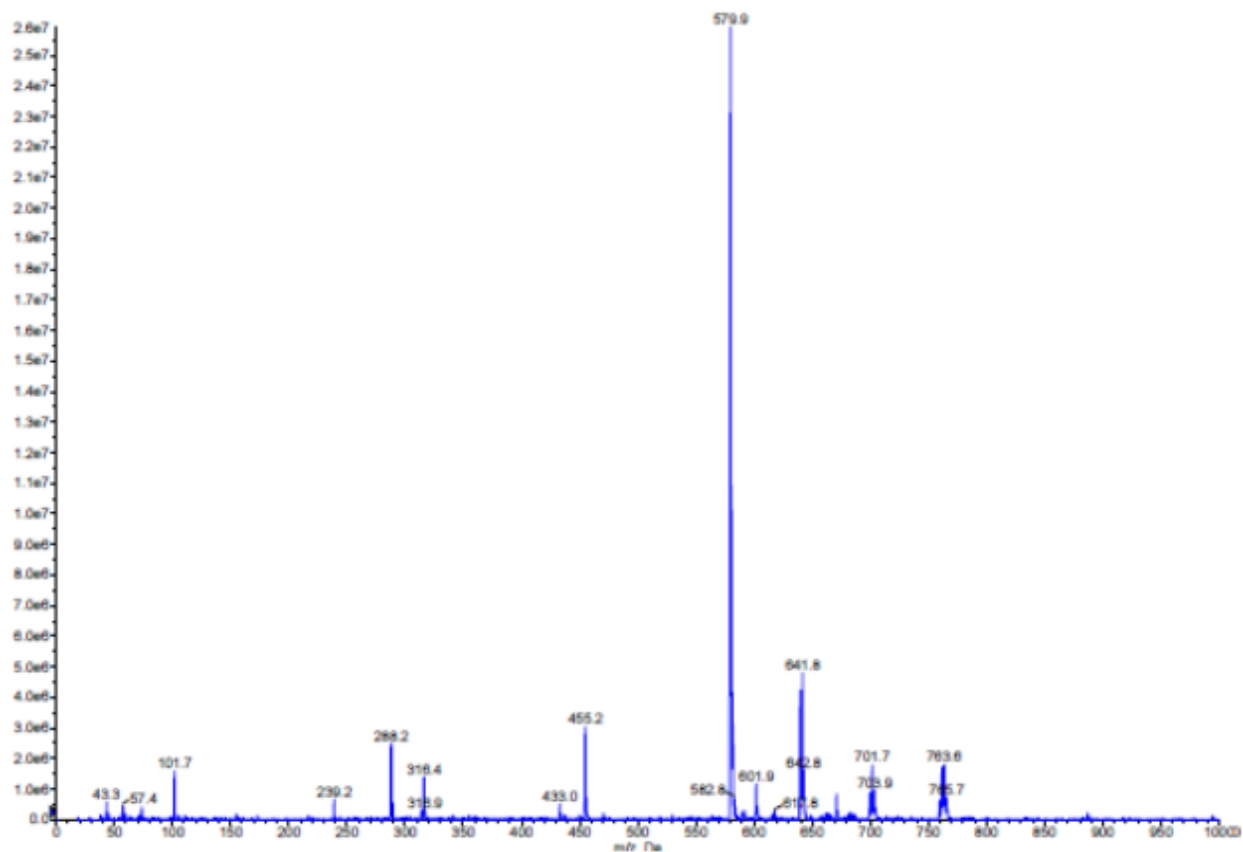
Chemical Formula: $C_{29}H_{31}ClN_6O_2$
 m/z: 531.0

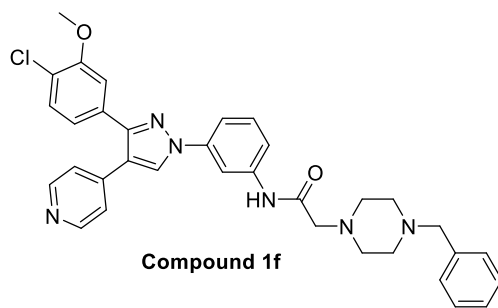




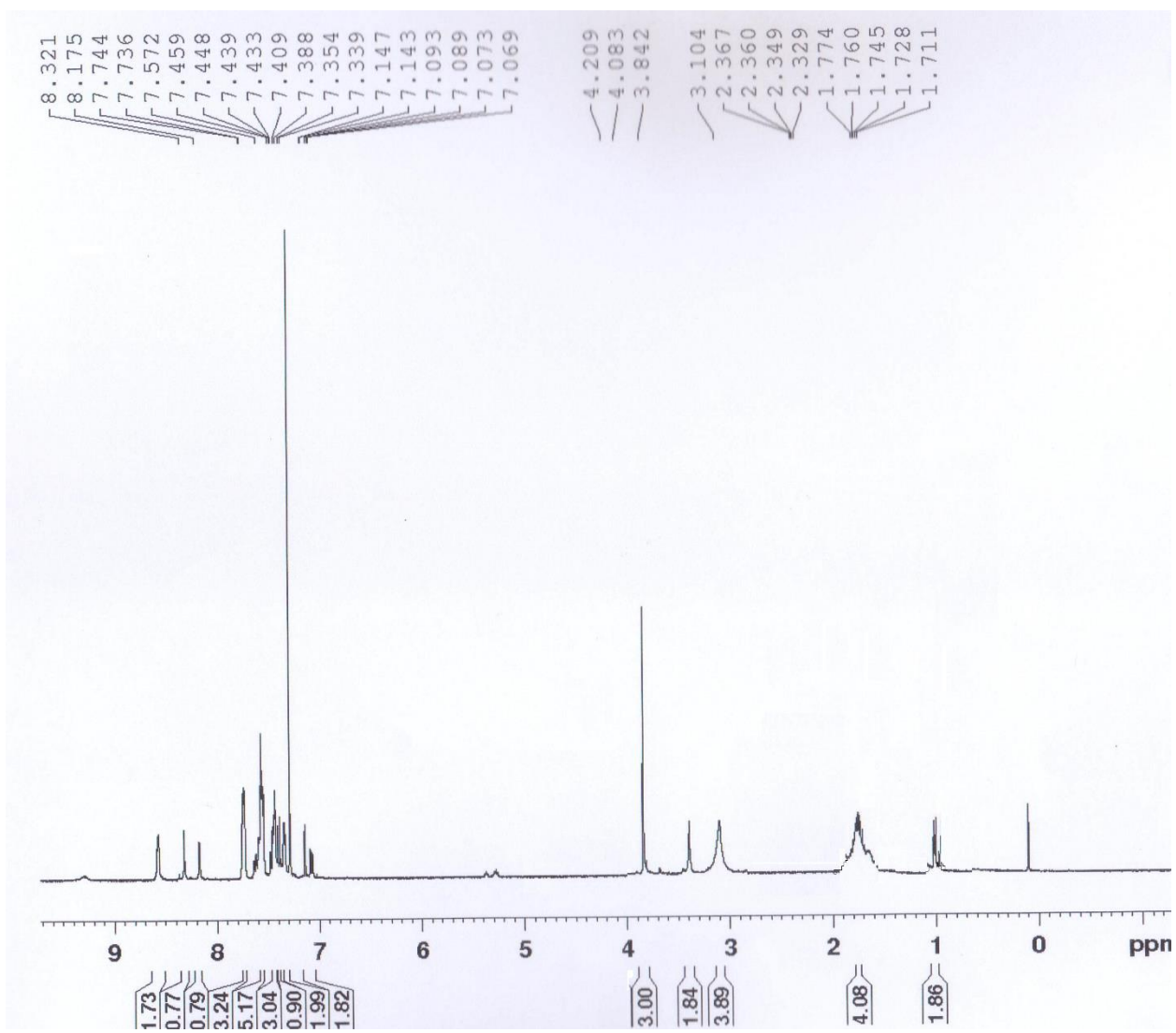


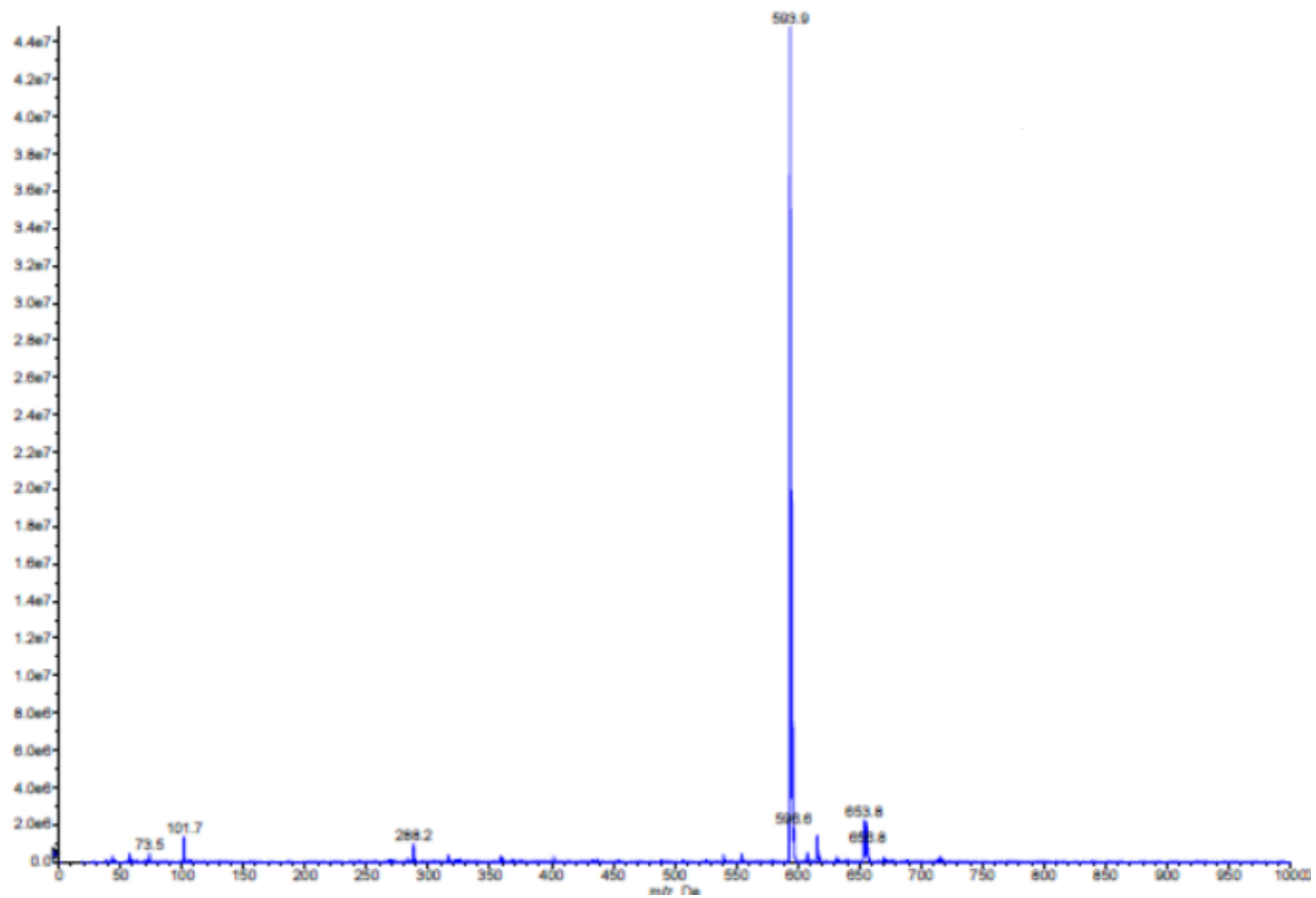
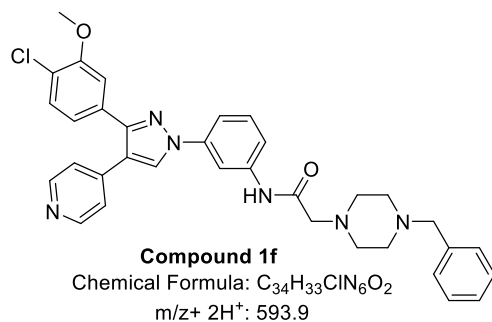
Chemical Formula: $C_{33}H_{31}ClN_6O_2$
 $m/z: + 2H^+ 579.9$

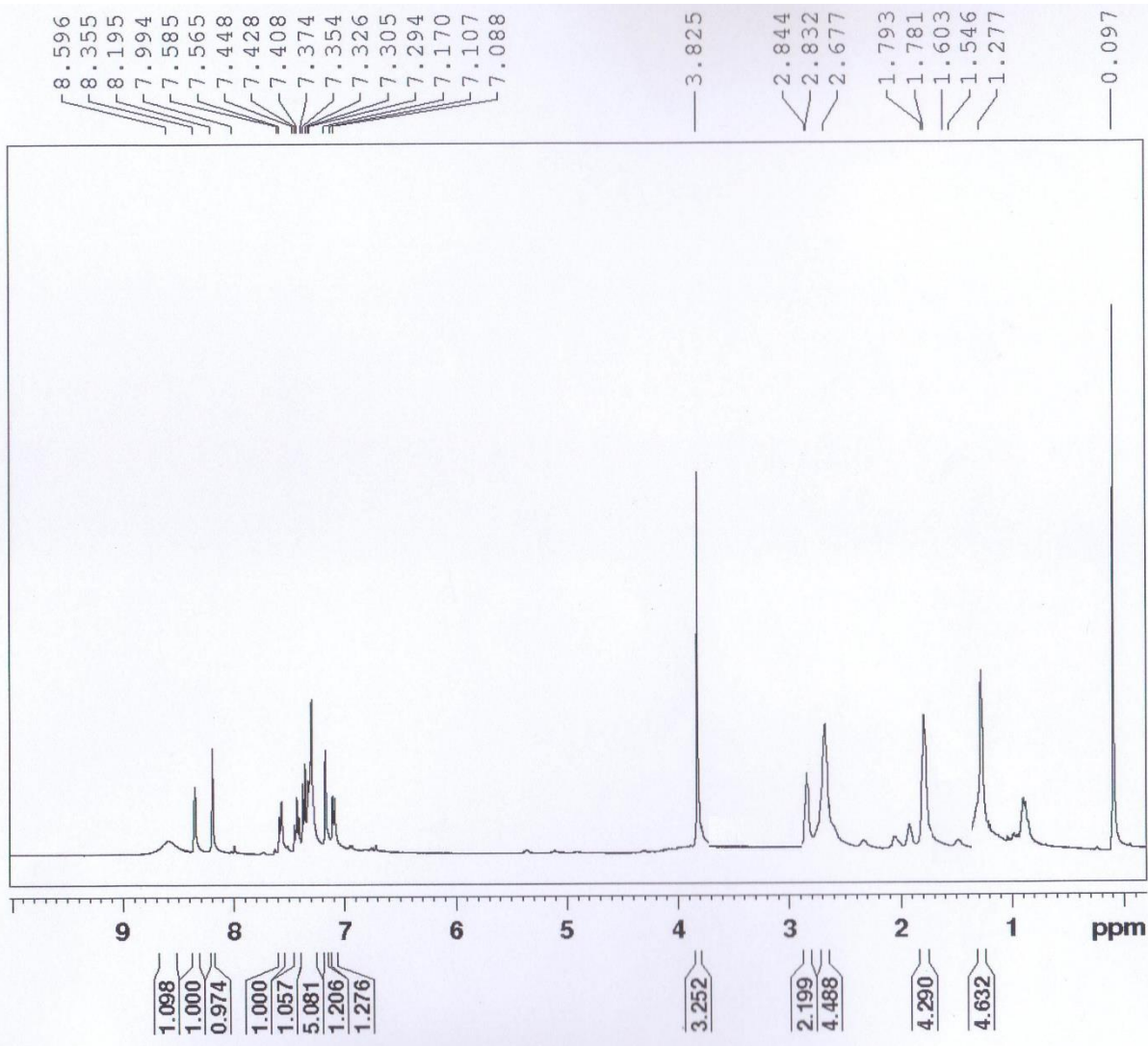
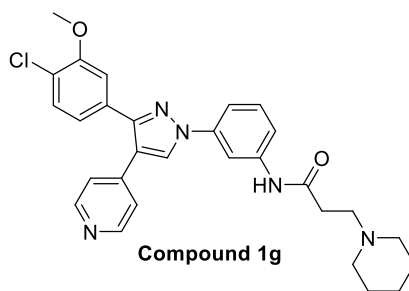


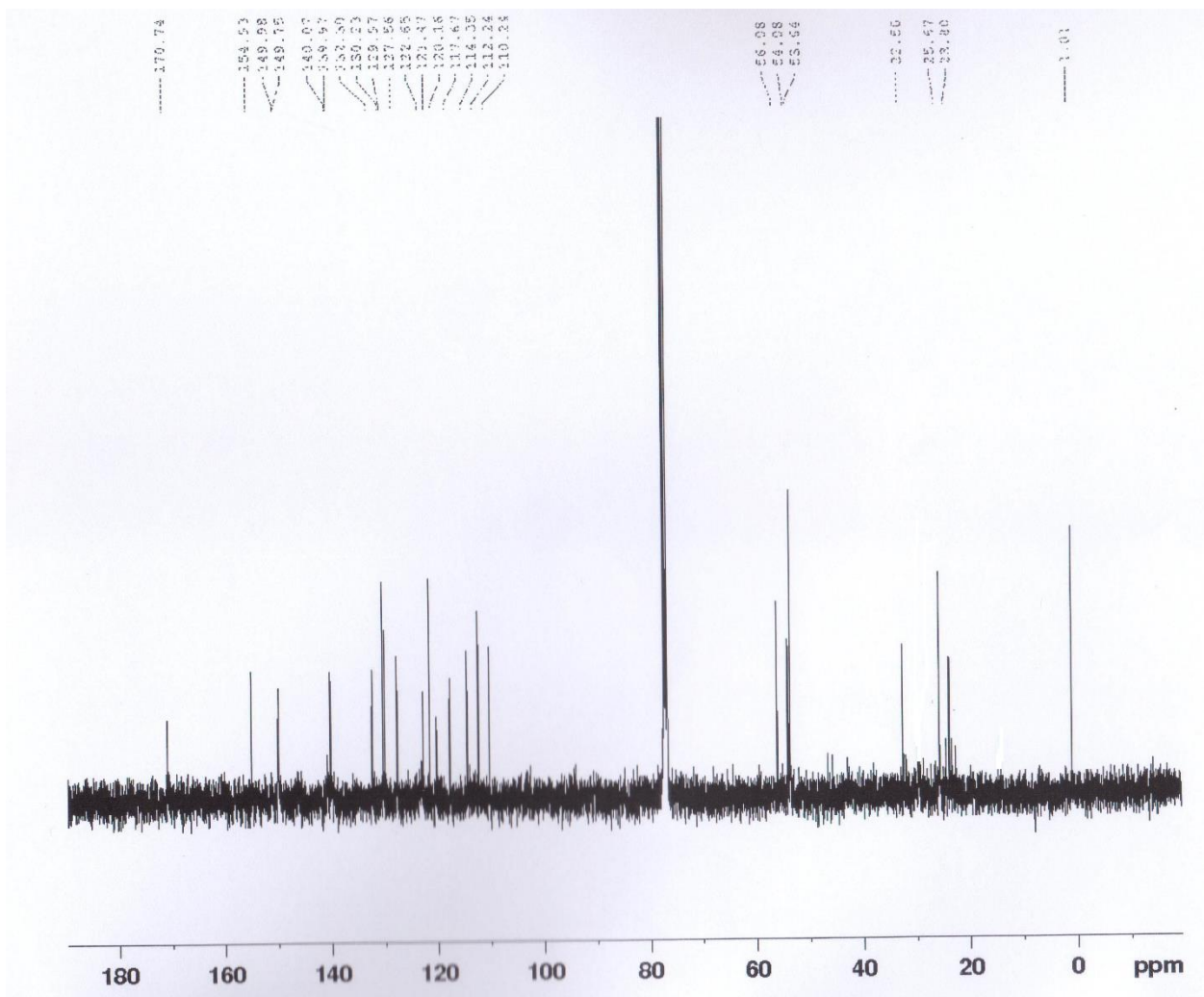
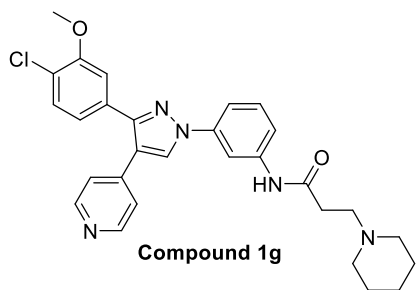


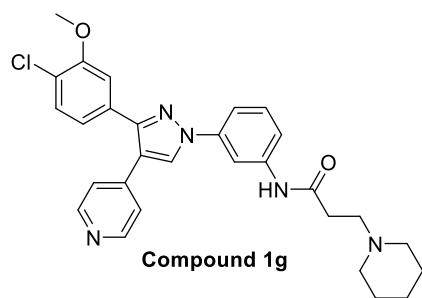
Compound 1f











Chemical Formula: $C_{29}H_{30}ClN_5O_2$
m/z+ 2: 517.21

