

Supplementary Materials

## PD-L1 Blockade by Atezolizumab Downregulates Signaling Pathways Associated with Tumor Growth, Metastasis, and Hypoxia in Human Triple Negative Breast Cancer

Reem Saleh, Rowaida Z. Taha, Varun Sasidharan Nair, Nehad M. Alajez and Eyad Elkord

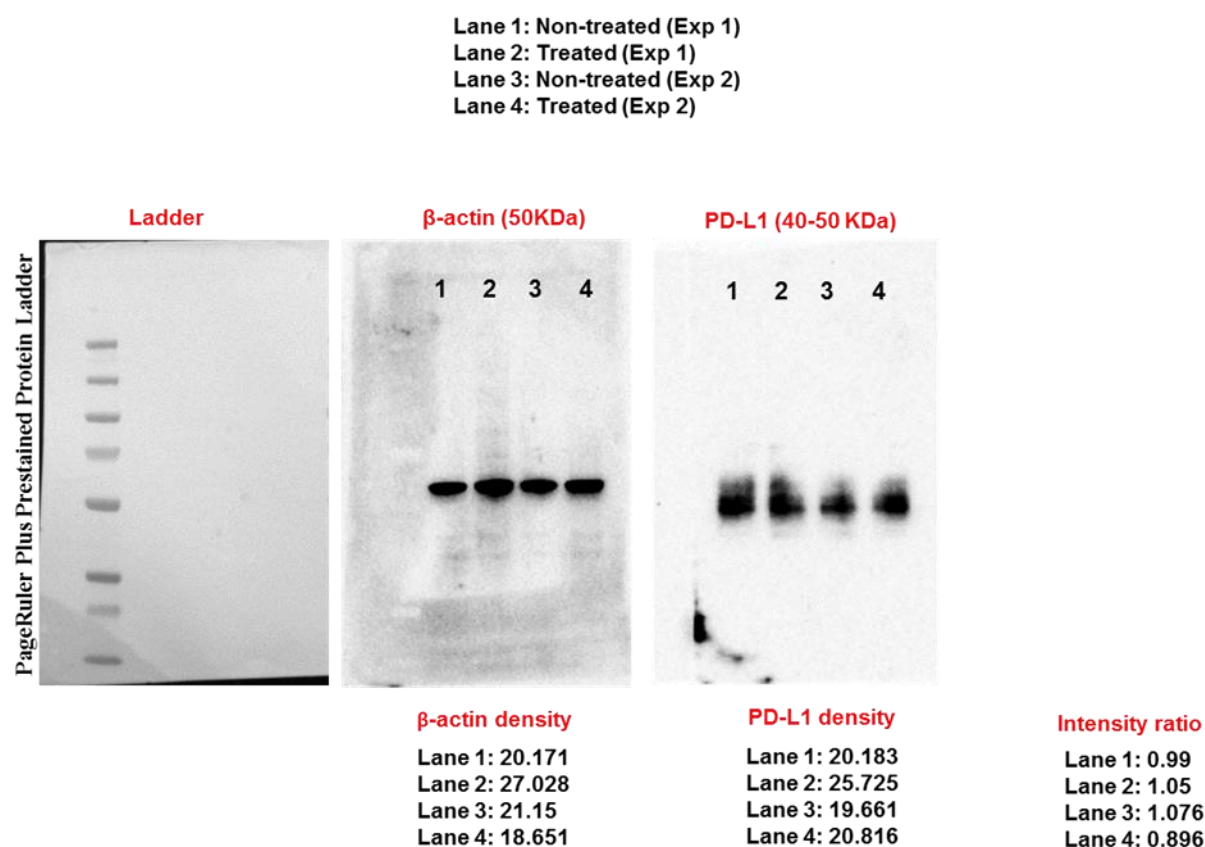
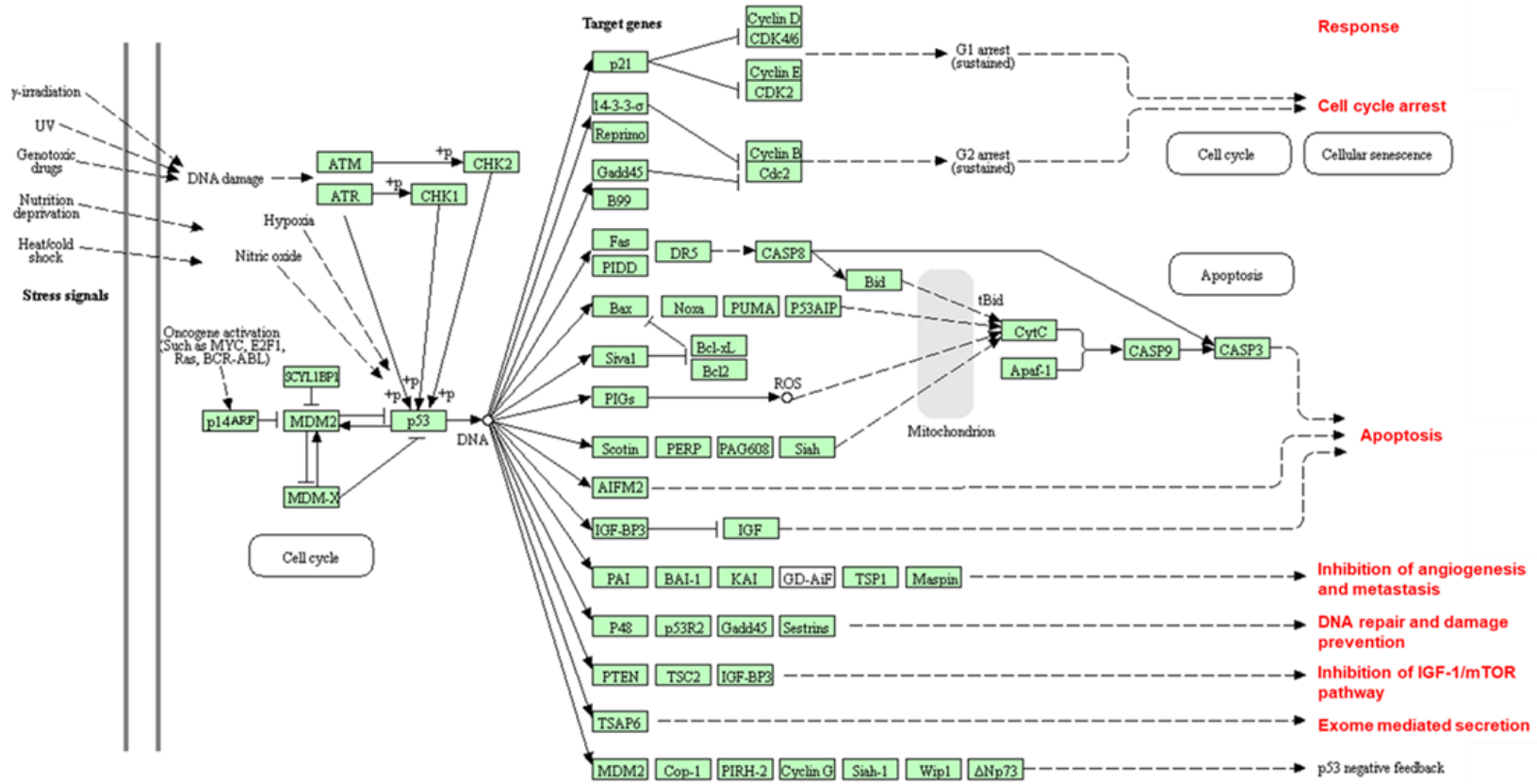


Figure S1. Detailed information of protein expression analysis by Western blot.

**P53 SIGNALING PATHWAY**



**Figure S2.** KEGG pathway analysis of upregulated genes in MDA-MB-231 treated cells showing the effect of atezolizumab on genes involved in P53 pathway.



© 2019 by the authors. Licensee MDPI, Basel, Switzerland. This article is an open access article distributed under the terms and conditions of the Creative Commons Attribution (CC BY) license (<http://creativecommons.org/licenses/by/4.0/>).