

Supplementary Materials

Vesicular-Bound HLA-G as a Predictive Marker for Disease Progression in Epithelial Ovarian Cancer

Esther Schwich, Vera Rebmann, Peter A. Horn, Alexander A. Celik, Christina Bade-Döding, Rainer Kimmig, Sabine Kasimir-Bauer, and Paul Buderath

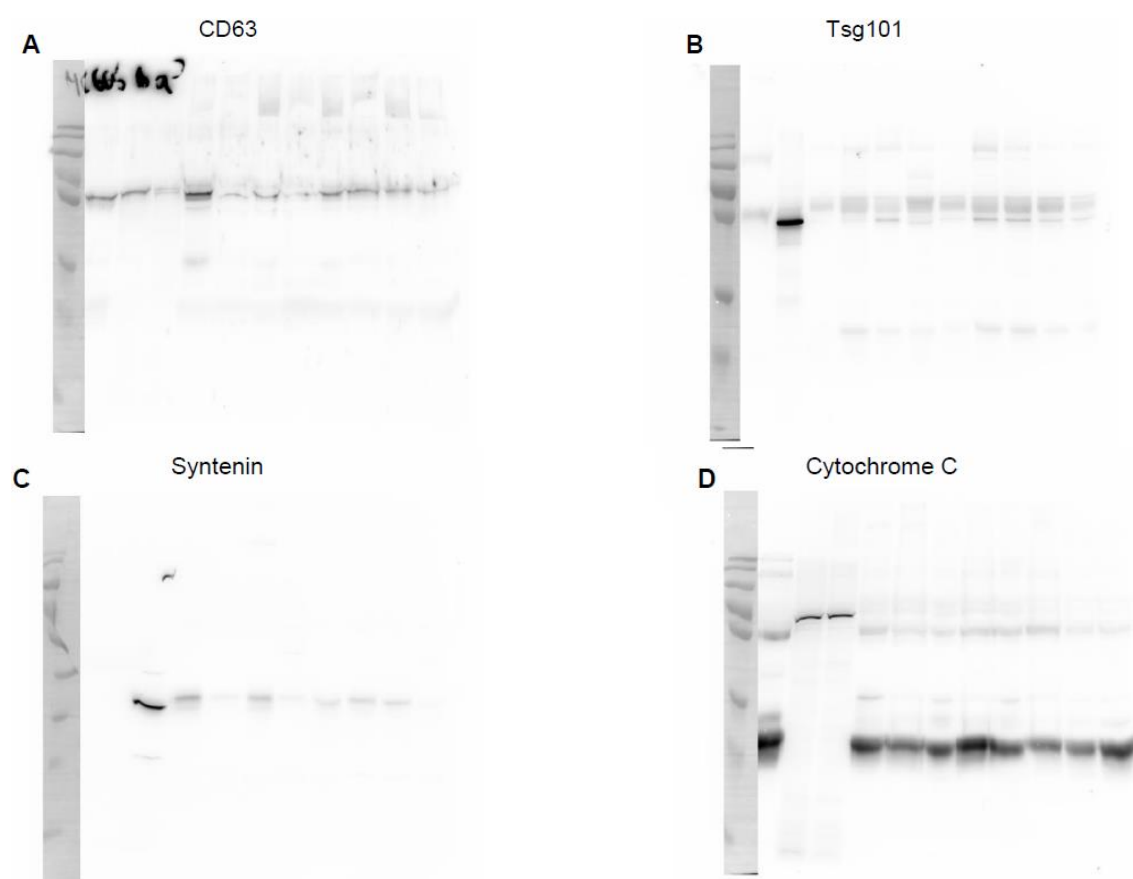


Figure S1. Characterization of EV preparations by western blot.

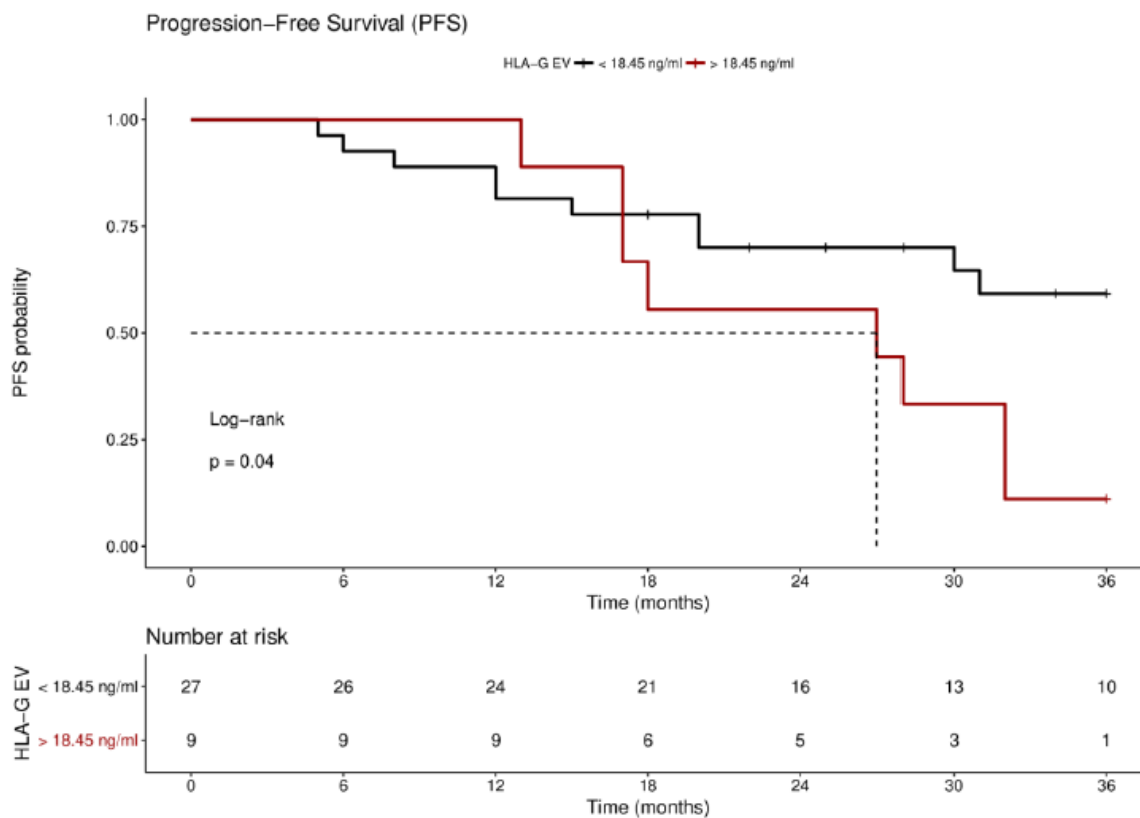


Figure S2. 3-year PFS Kaplan-Meier survival analysis regarding HLA-G_{EV} status of patients without residual tumor burden.



© 2019 by the authors. Licensee MDPI, Basel, Switzerland. This article is an open access article distributed under the terms and conditions of the Creative Commons Attribution (CC BY) license (<http://creativecommons.org/licenses/by/4.0/>).