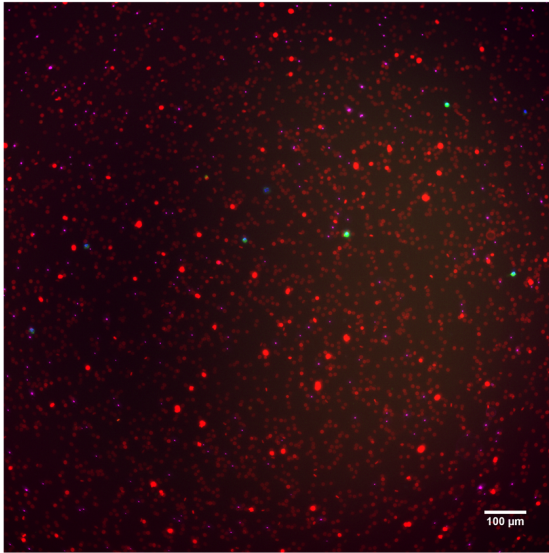
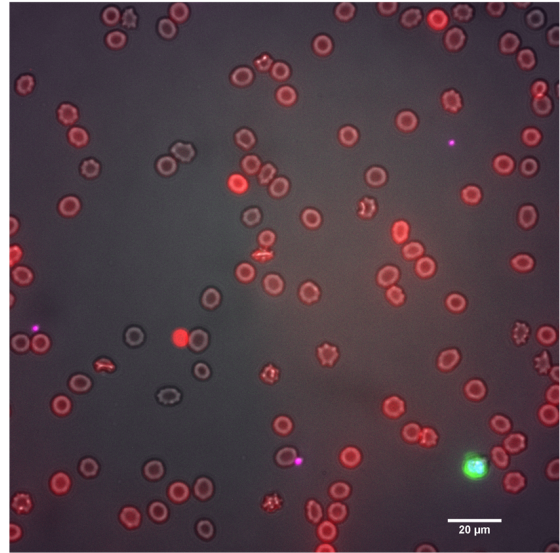


**A. 10x/0.45 NA objective**



**Hoechst, CD235a, CD61, CD45**

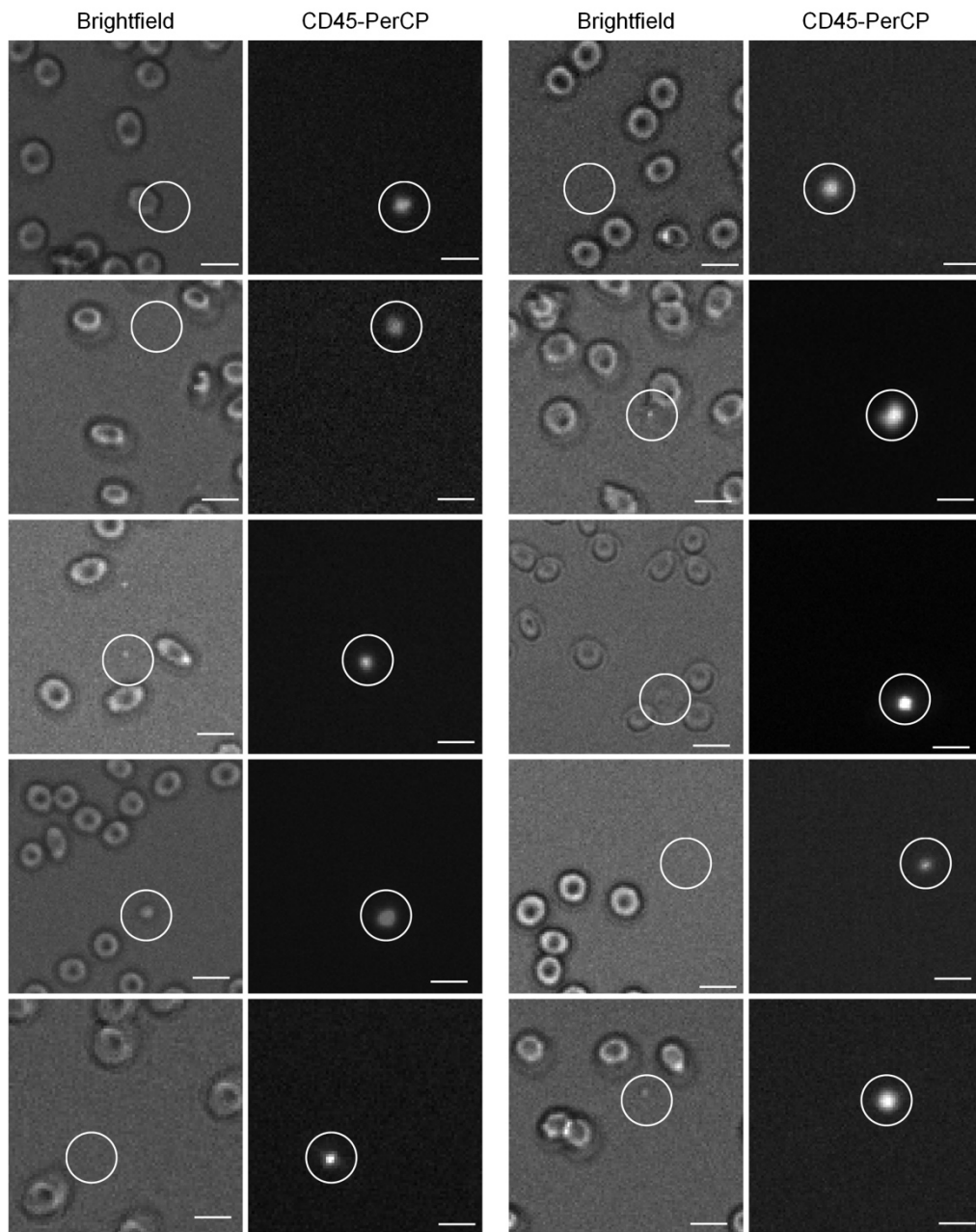
**B. 60x/0.7 NA objective**



**Hoechst, CD235a, CD61, CD45, brightfield**

**Supplementary Figure S1:** Examples of composite immunofluorescence images of blood samples without EpCAM enrichment, obtained with an inverted scanning fluorescence microscope using a 10×/0.45 NA (Panel A) and a 60×/0.7 NA objective (Panel B). The images that were obtained with the 10× objective were used as an input in the open-source ACCEPT software for the automated enumeration of the different cell and EV populations.

### Leukocyte-derived EVs in whole blood



**Supplementary Figure S2:** Examples of brightfield and immunofluorescence images of leukocyte-derived Extracellular Vesicles, enclosed within circles. Scale bars indicate 10  $\mu\text{m}$ .