

Supplementary Information

**Phenazine Derivatives with Anti-inflammatory Activity
from the Deep-Sea Sediment-Derived Yeast-Like Fungus
Cystobasidium laryngis IV17-028**

Hwa-Sun Lee ¹, Jong soon Kang ², Byeoung-Kyu Choi ¹, Hyi-Seung Lee ¹, Yeon-Ju Lee ¹, Jihoon Lee ¹ and Hee Jae Shin ^{1,*}

¹ Marine Natural Products Chemistry Laboratory, Korea Institute of Ocean Science Technology, 385 Haeyang-ro, Yeongdo-gu, Busan 49111, Republic of Korea; hwasunlee@kiost.ac.kr (H.-S.L.); choibk4404@kiost.ac.kr (B.-K.C.); hslee@kiost.ac.kr (H.-S.L.); yjlee@kiost.ac.kr (Y.-J.L.); jihoonlee@kiost.ac.kr (J.L.)

² Laboratory Animal Resource Center, Korea Research Institute of Bioscience and Biotechnology, 30 Yeongudangi-ro, Ochang-eup, Cheongwon-gu, Cheongju 28116, Republic of Korea; kanjon@kribb.re.kr

*Correspondence: shinhj@kiost.ac.kr; Tel.: +82-51-664-3341

Contents

- Figure S1.** ^1H NMR spectrum of compound **1** (600 MHz, CD_3OD).
- Figure S2.** ^1H NMR spectrum of compound **1** (600 MHz, CDCl_3).
- Figure S3.** ^{13}C NMR spectrum of compound **1** (150 MHz, CD_3OD).
- Figure S4.** HSQC spectrum of compound **1** in CD_3OD .
- Figure S5.** COSY spectrum of compound **1** in CD_3OD .
- Figure S6.** HMBC spectrum of compound **1** in CD_3OD .
- Figure S7.** ROESY spectrum of compound **1** in CD_3OD .
- Figure S8.** HRESI-MS spectrum of compound **1**.
- Figure S9.** ^1H NMR spectrum of compound **2** (600 MHz, CDCl_3).
- Figure S10.** ^{13}C NMR spectrum of compound **2** (150 MHz, CDCl_3).
- Figure S11.** HSQC spectrum of compound **2** in CDCl_3 .
- Figure S12.** COSY spectrum of compound **2** in CDCl_3 .
- Figure S13.** HMBC spectrum of compound **2** in CDCl_3 .
- Figure S14.** HRESI-MS spectrum of compound **2**.
- Figure S15.** ^1H NMR spectrum of compound **3** (600 MHz, CDCl_3).
- Figure S16.** ^{13}C NMR spectrum of compound **3** (150 MHz, CDCl_3).
- Figure S17.** HSQC spectrum of compound **3** in CDCl_3 .
- Figure S18.** COSY spectrum of compound **3** in CDCl_3 .
- Figure S19.** HMBC spectrum of compound **3** in CDCl_3 .
- Figure S20.** HRESI-MS spectrum of compound **3**.
- Figure S21.** ^1H NMR spectrum of compound **4** (600 MHz, CDCl_3).
- Figure S22.** ^{13}C NMR spectrum of compound **4** (150 MHz, CDCl_3).
- Figure S23.** ^1H NMR spectrum of compound **5** (600 MHz, CDCl_3).
- Figure S24.** ^1H NMR spectrum of compound **6** (600 MHz, CDCl_3).
- Figure S25.** ^1H NMR spectrum of compound **7** (600 MHz, CDCl_3).
- Figure S26.** ^1H NMR spectrum of semi-synthesized **1** (600 MHz, CDCl_3).

Figure S27. LR-MS spectrum of semi-synthesized **1**.

Figure S28. Comparison of ^1H NMR data between semi-synthesized **1** and natural **1**.

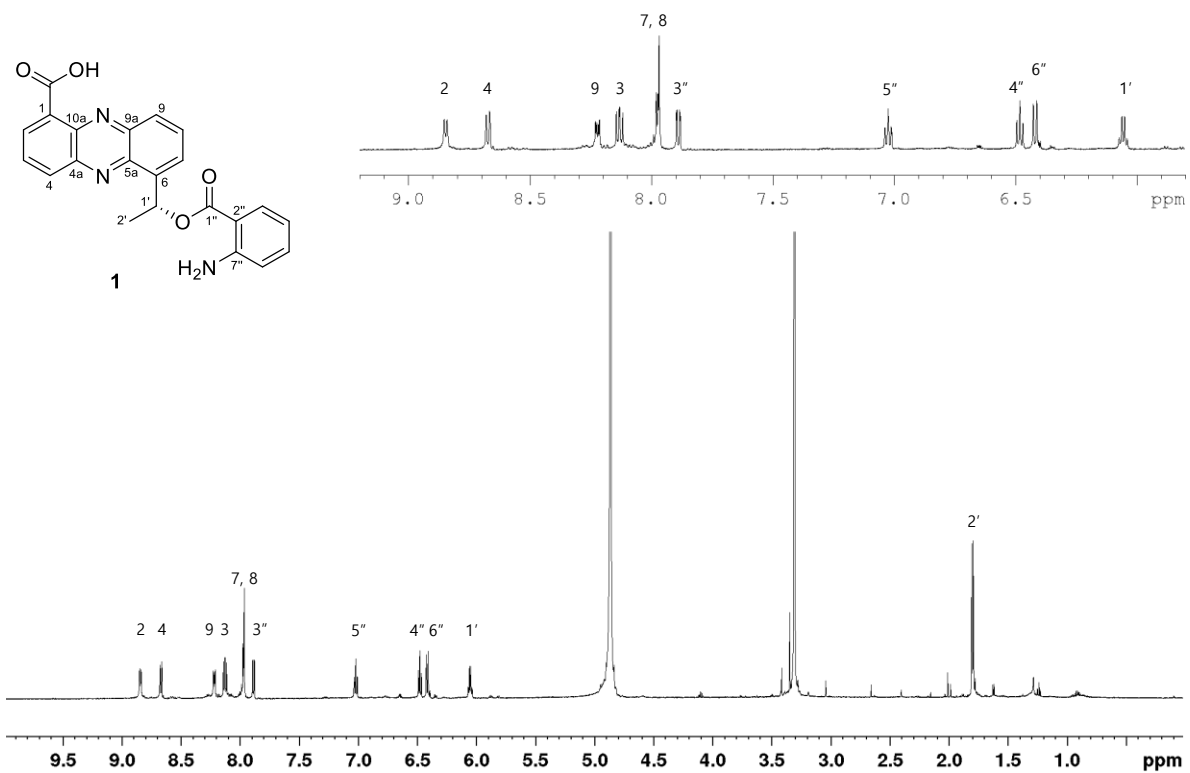


Figure S1. ¹H NMR spectrum of compound **1** (600 MHz, CD₃OD).

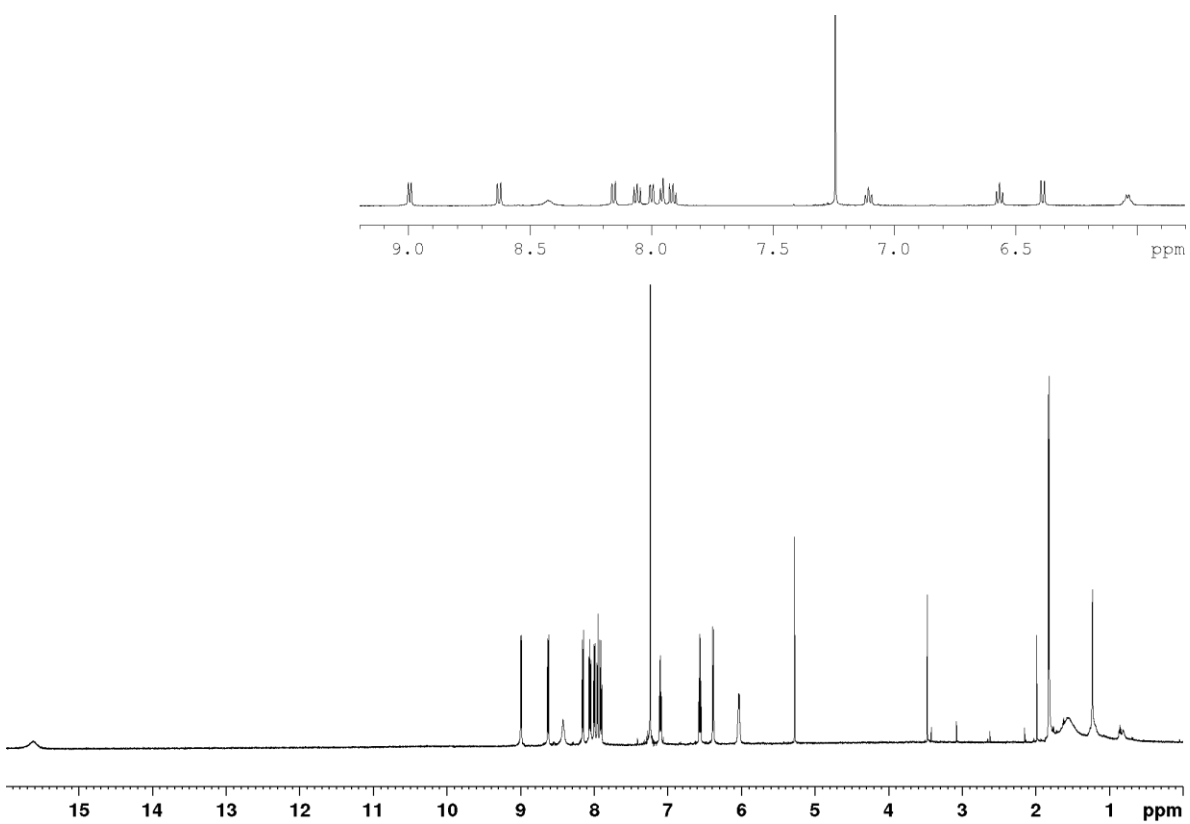


Figure S2. ¹H NMR spectrum of compound **1** (600 MHz, CDCl₃).

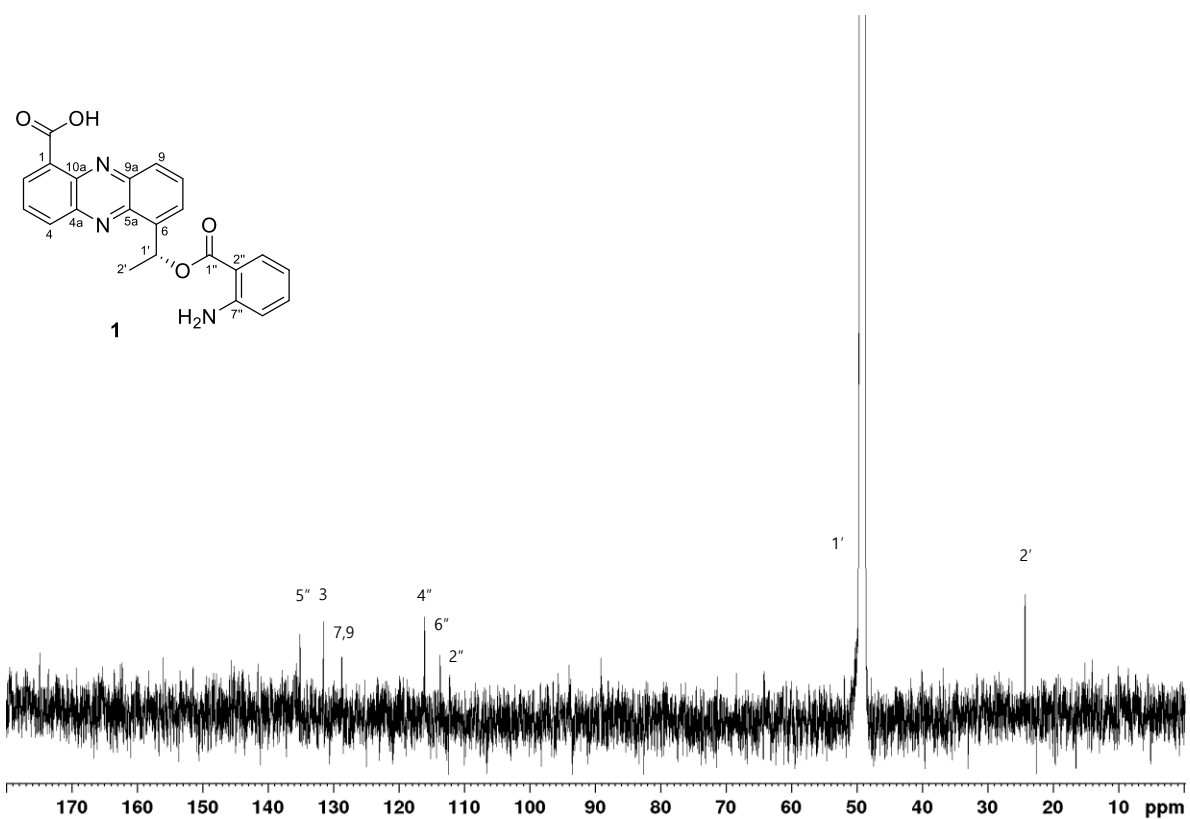


Figure S3. ^{13}C NMR spectrum of compound **1** (150 MHz, CD_3OD).

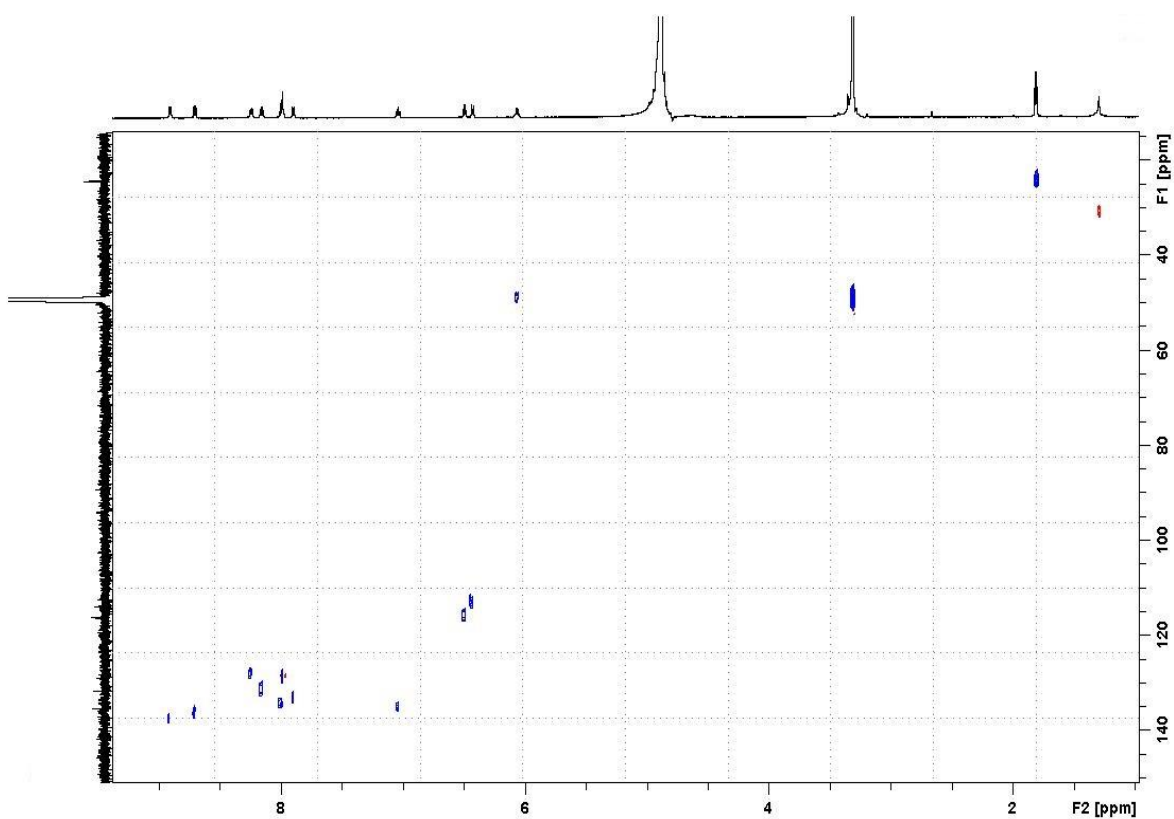


Figure S4. HSQC spectrum of compound **1** in CD_3OD .

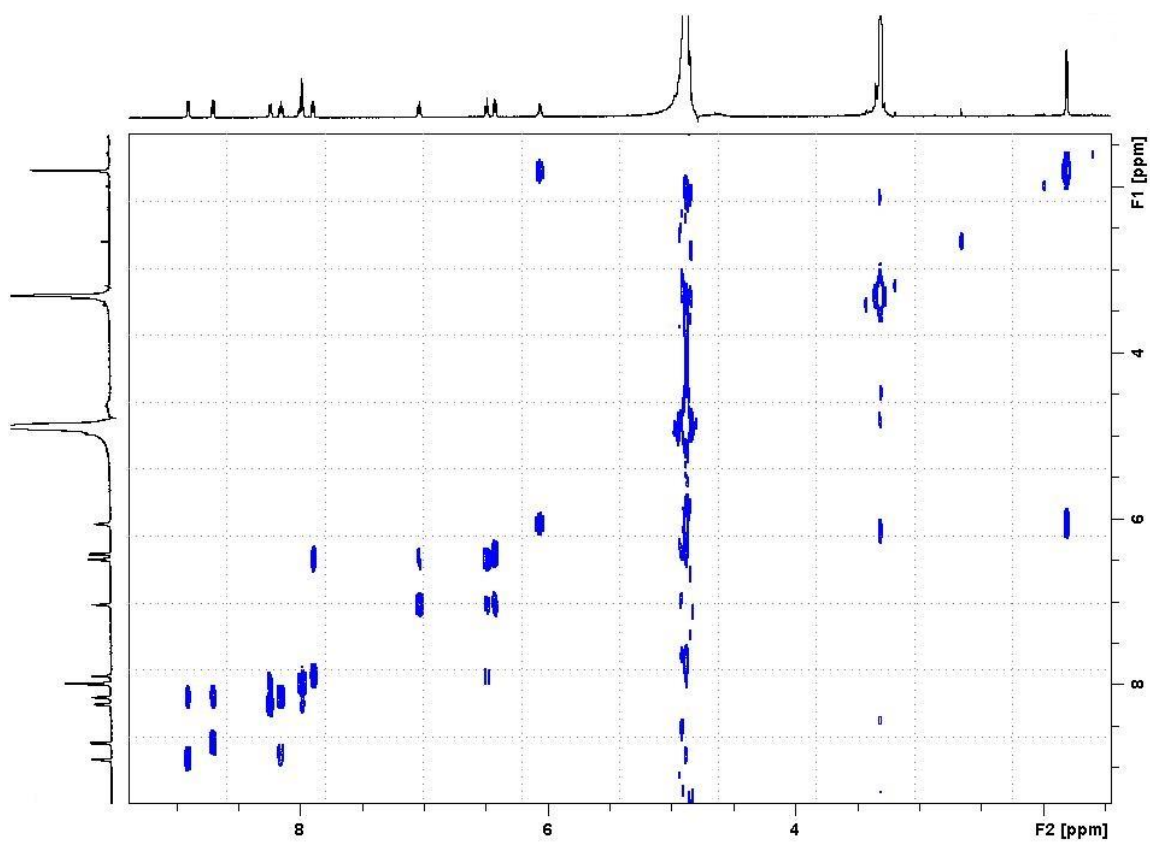


Figure S5. COSY spectrum of compound 1 in CD₃OD.

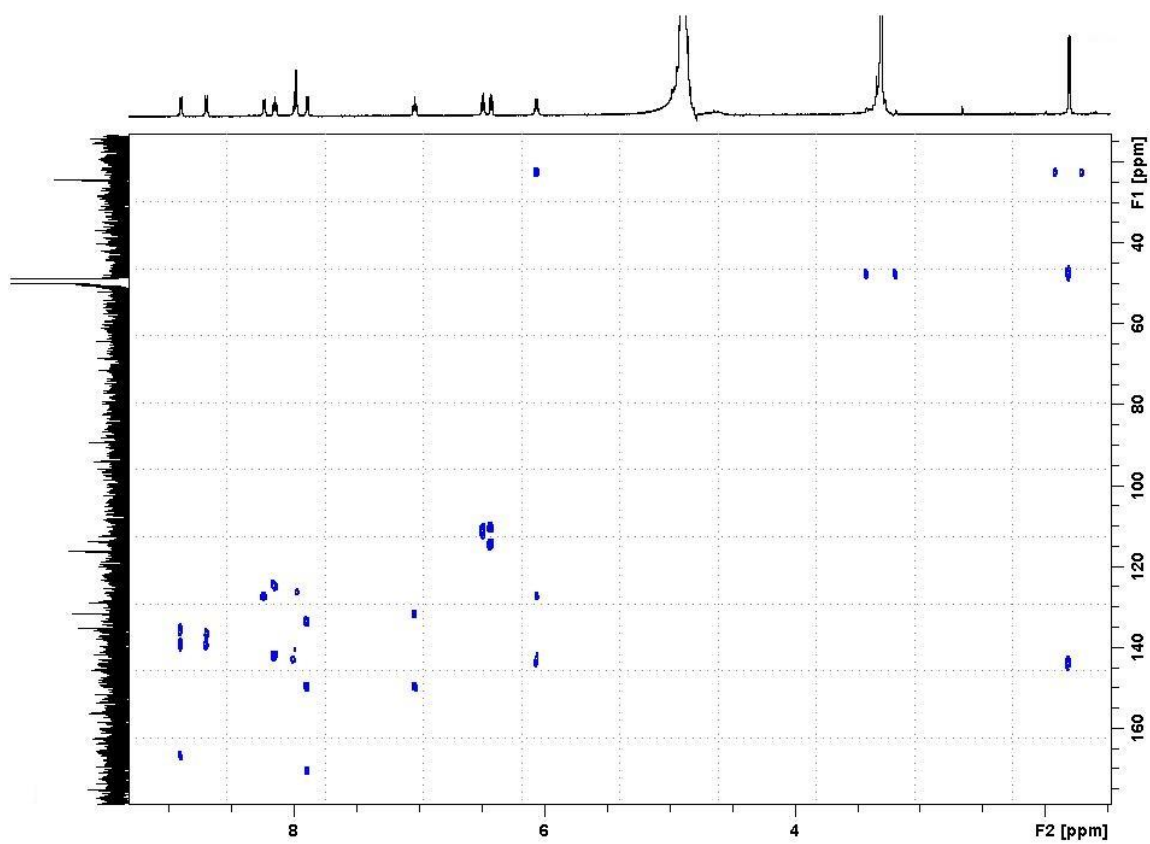


Figure S6. HMBC spectrum of compound 1 in CD₃OD.

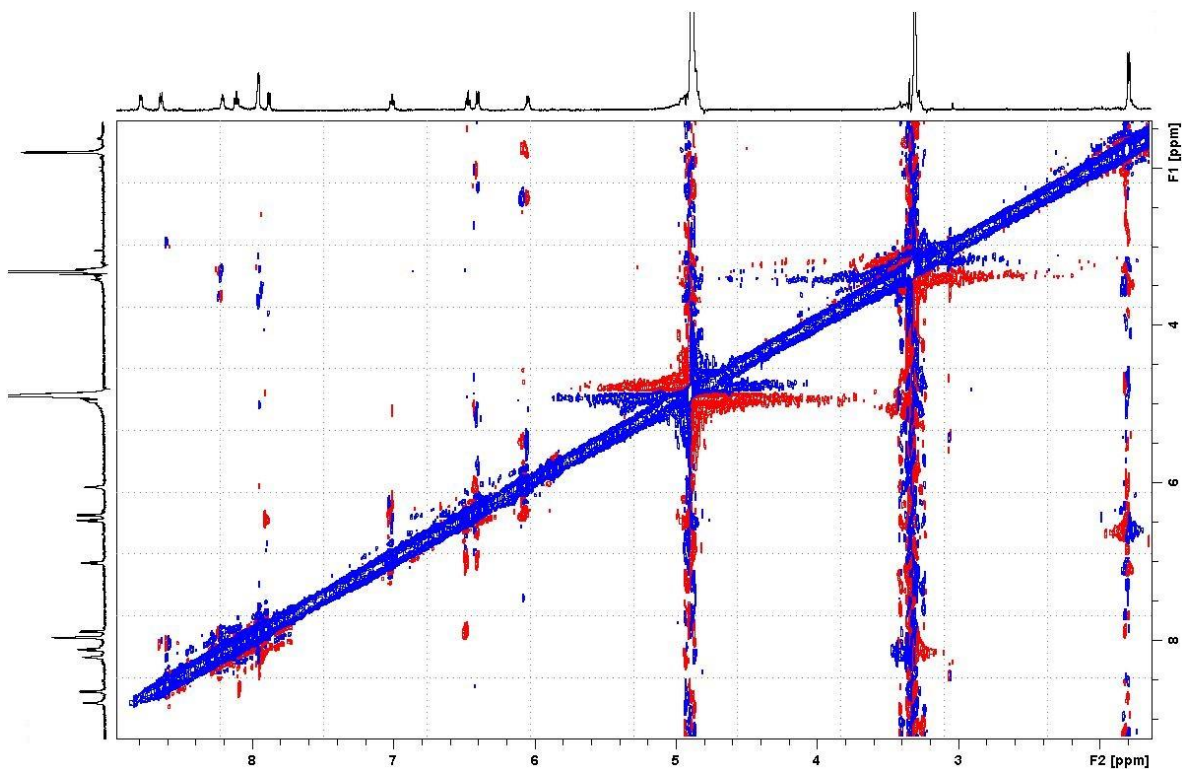
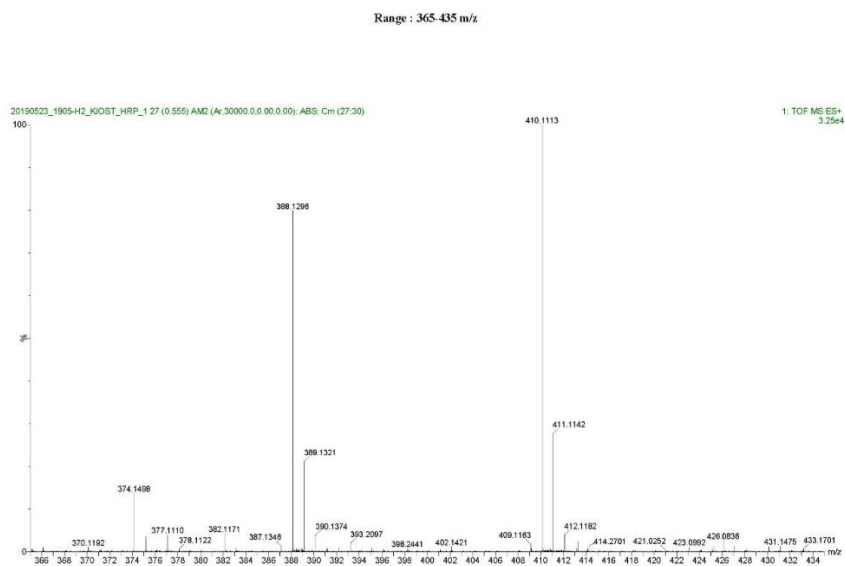


Figure S7. ROESY spectrum of compound 1 in CD₃OD.



Elemental Composition Report

Single Mass Analysis
 Tolerance = 5.0 PPM / DBE: min = -1.5, max = 100.0
 Element prediction: Off
 Number of isotope peaks used for i-FIT = 3

Monoisotopic Mass, Even Electron Ions
 72 formula(e) evaluated with 2 results within limits (all results (up to 1000) for each mass)

Elements Used:

C: 0-25 H: 0-20 N: 1-3 O: 1-4 Na: 0-1

Minimum: -1.5

Maximum: 500.0 5.0 100.0

Mass	Calc. Mass	mDa	PPM	DBE	i-FIT	Norm	Conf(%)	Formula
388.1296	388.1297	-0.1	-0.3	15.5	521.8	0.992	37.08	C22 H18 N3 O4
	388.1313	-1.7	-4.4	16.5	521.3	0.463	62.92	C25 H19 N O2 Na
410.1113	410.1117	-0.4	-1.0	15.5	609.9	n/a	n/a	C22 H17 N3 O4 Na

Figure S8. HRESI-MS spectrum of compound 1.

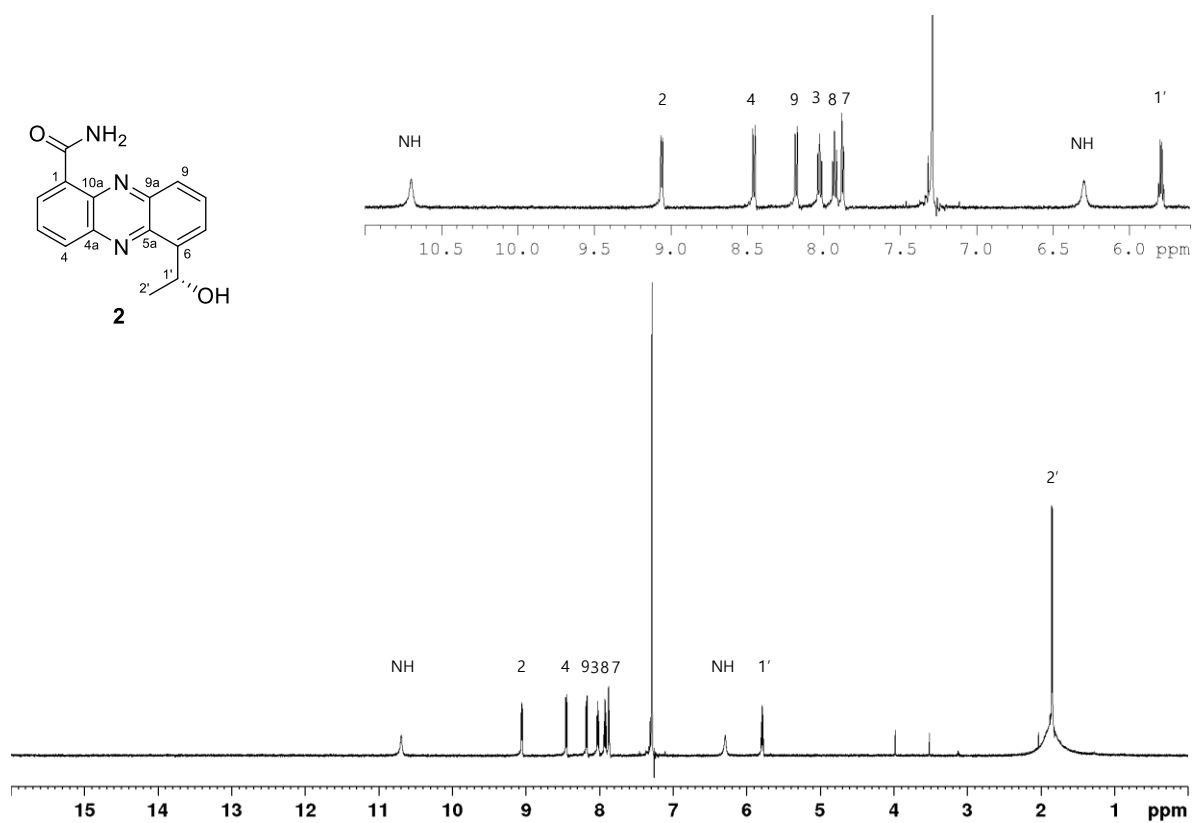


Figure S9. ^1H NMR spectrum of compound **2** (600 MHz, CDCl_3).

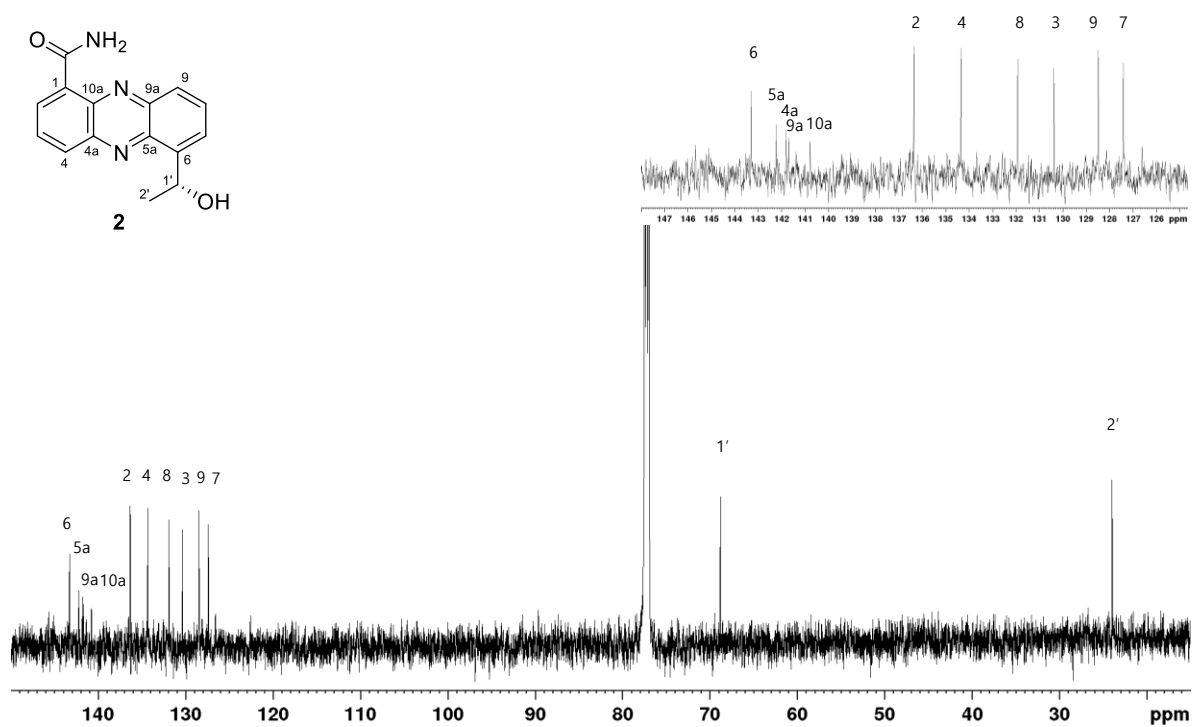


Figure S10. ^{13}C NMR spectrum of compound **2** (150 MHz, CDCl_3).

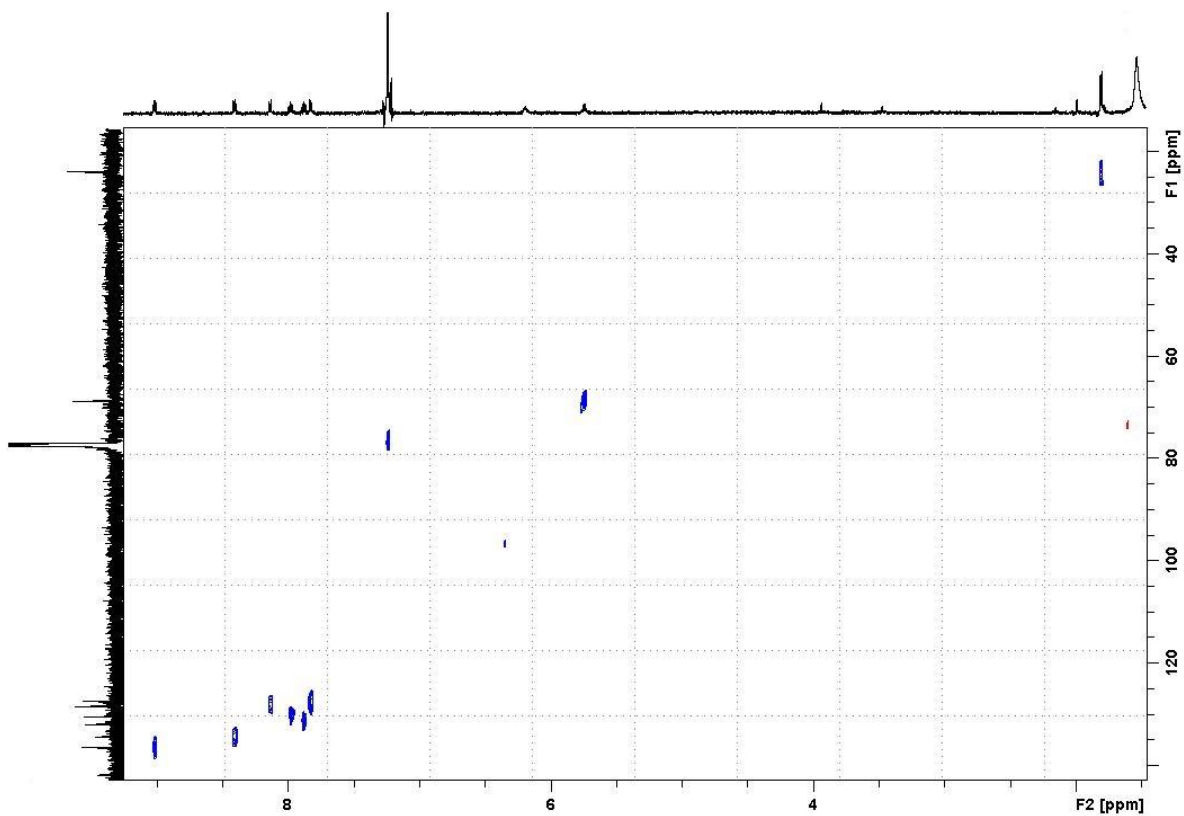


Figure S11. HSQC spectrum of compound 2 in CDCl₃.

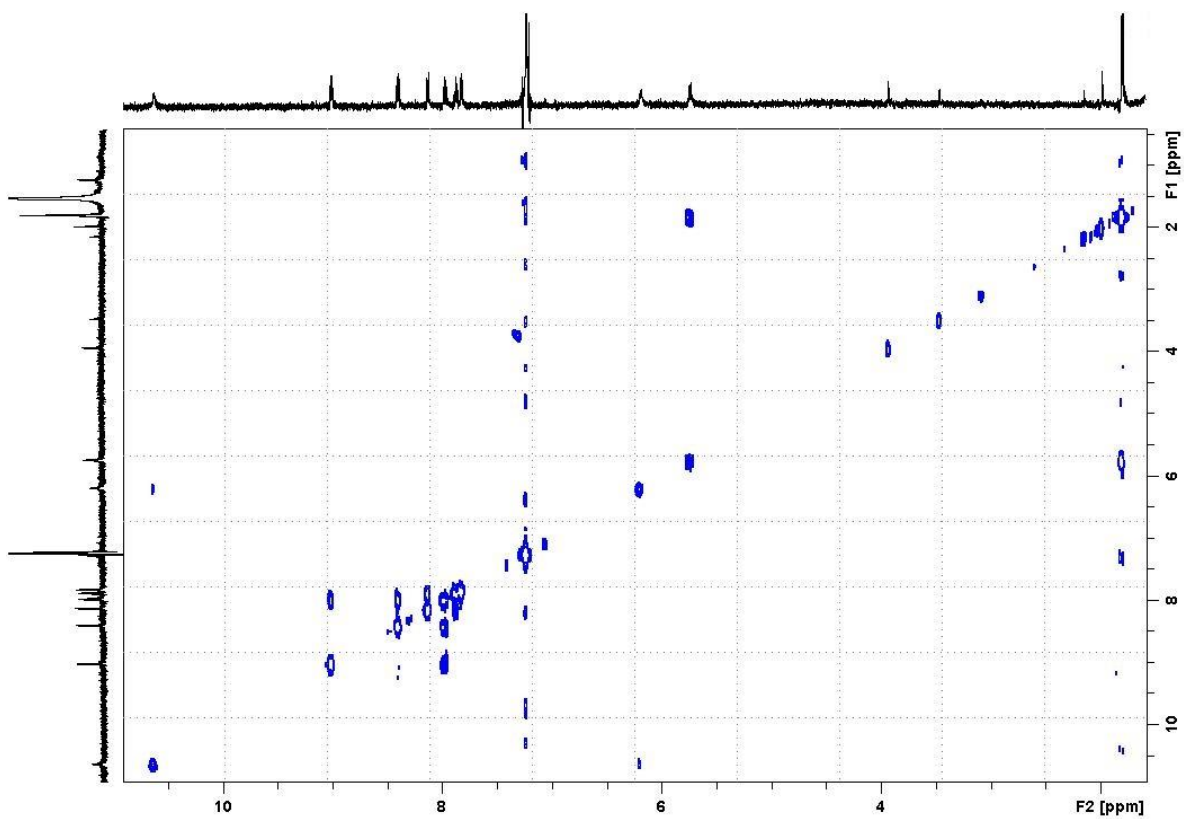


Figure S12. COSY spectrum of compound 2 in CDCl₃.

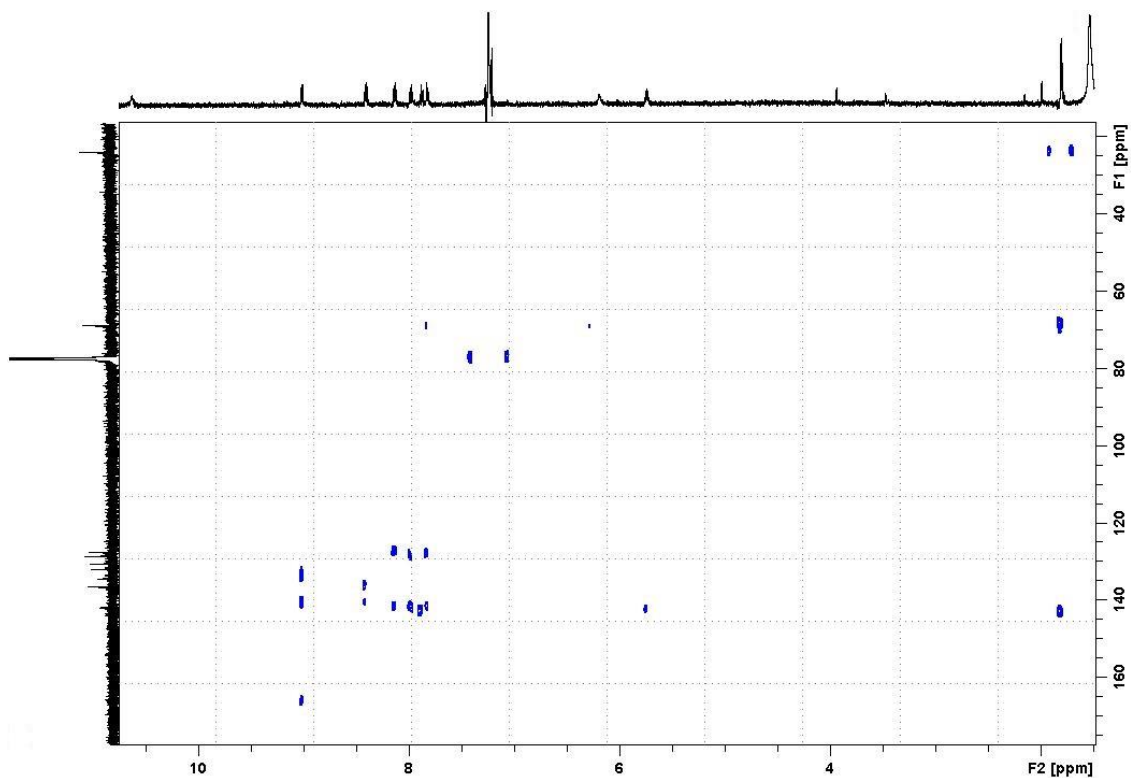
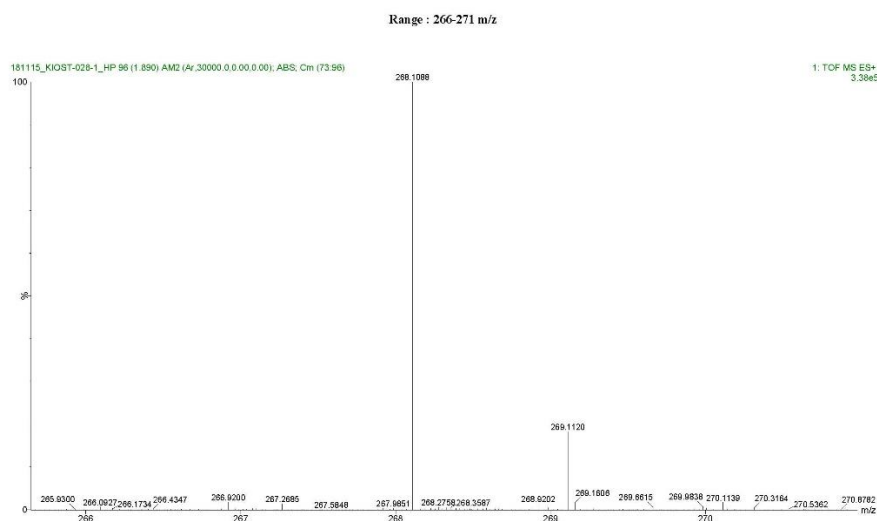


Figure S13. HMBC spectrum of compound 2 in CDCl₃.



Elemental Composition Report

Single Mass Analysis

Tolerance = 50.0 PPM / DBE: min = -1.5, max = 50.0

Element prediction: Off

Number of isotope peaks used for i-FIT = 3

Monoisotopic Mass, Even Electron Ions

117 formula(e) evaluated with 2 results within limits (all results (up to 1000) for each mass)

Elements Used:

C: 15-40 H: 10-40 N: 1-10 O: 1-15

Minimum:

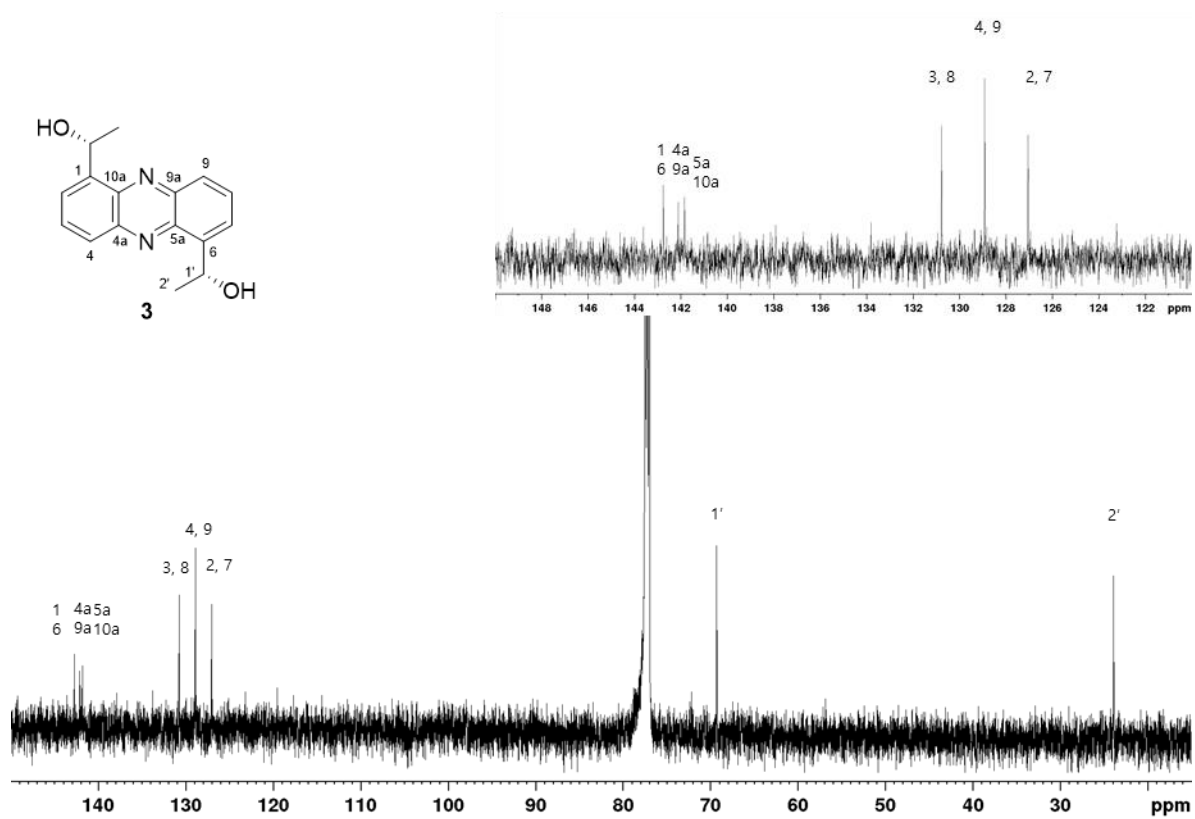
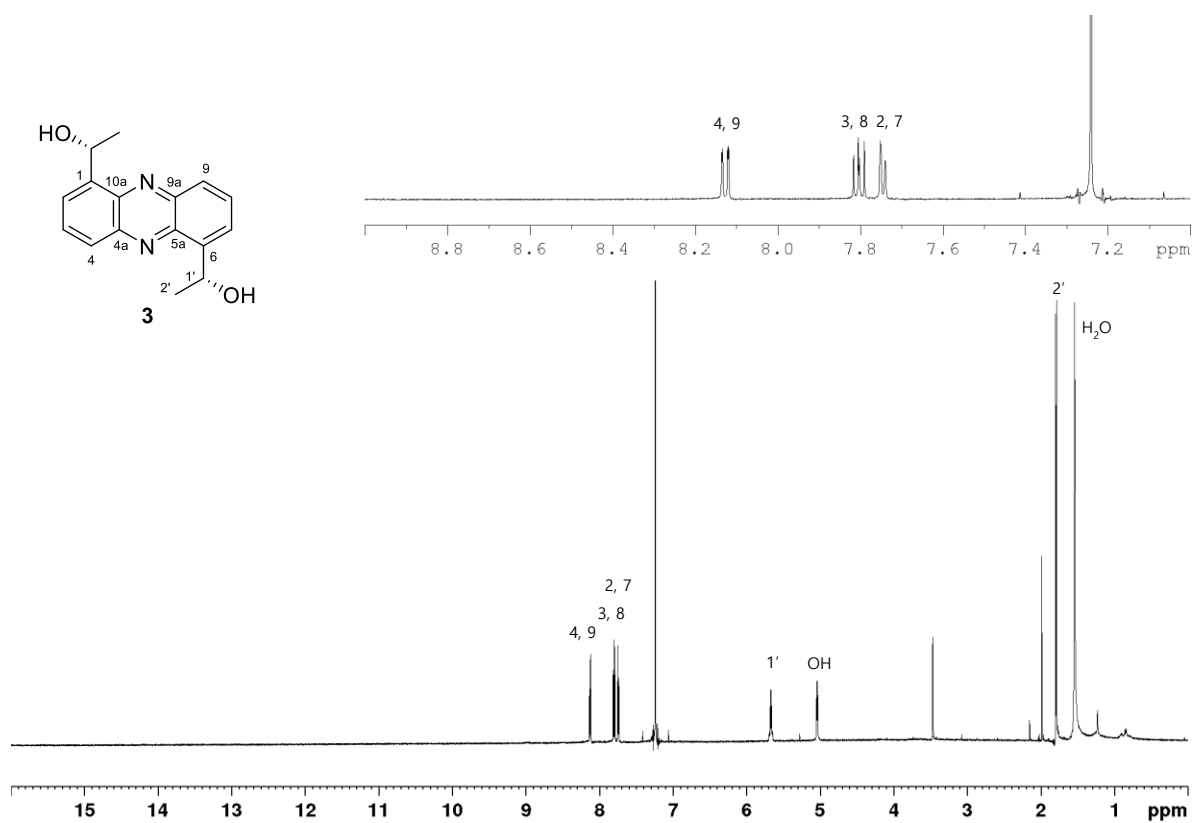
Maximum:

Mass

268.1088

Calc. Mass	mDa	PPM	DBE	i-FIT	Norm	Conf(%)	Formula
268.1086	0.2	0.7	10.5	1146.3	0.013	98.73	C ₁₅ H ₁₄ N ₃ O ₂
268.0974	11.4	42.5	10.5	1150.7	4.364	1.27	C ₁₆ H ₁₄ N ₃ O ₃

Figure S14. HRESI-MS spectrum of compound 2.



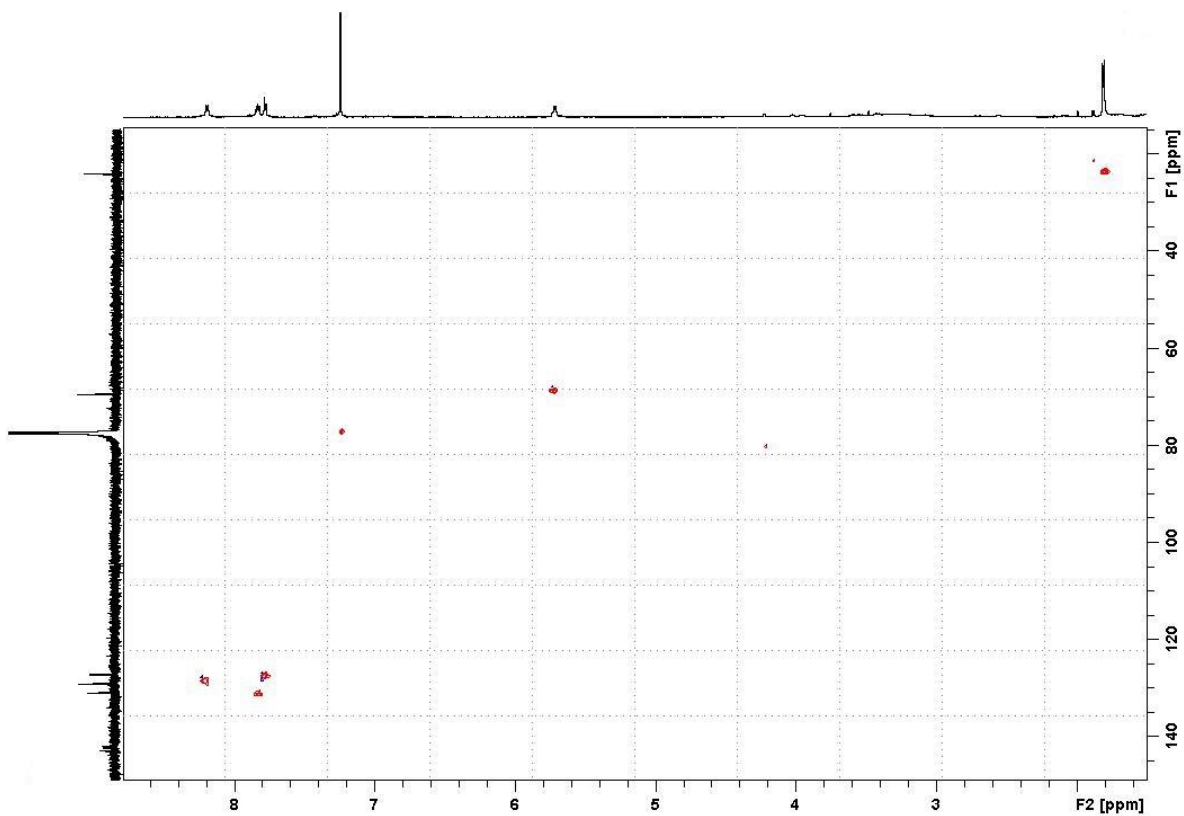


Figure S17. HSQC spectrum of compound 3 in CDCl₃.

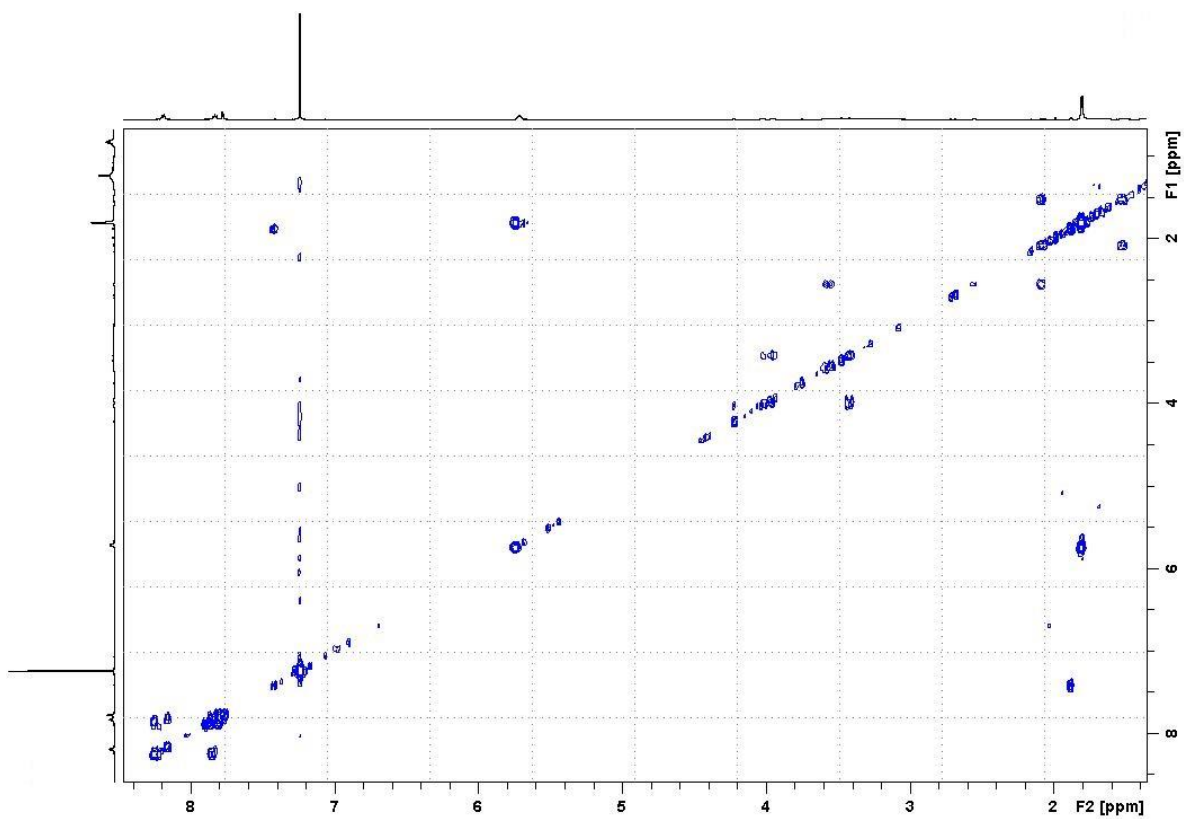


Figure S18. COSY spectrum of compound 3 in CDCl₃.

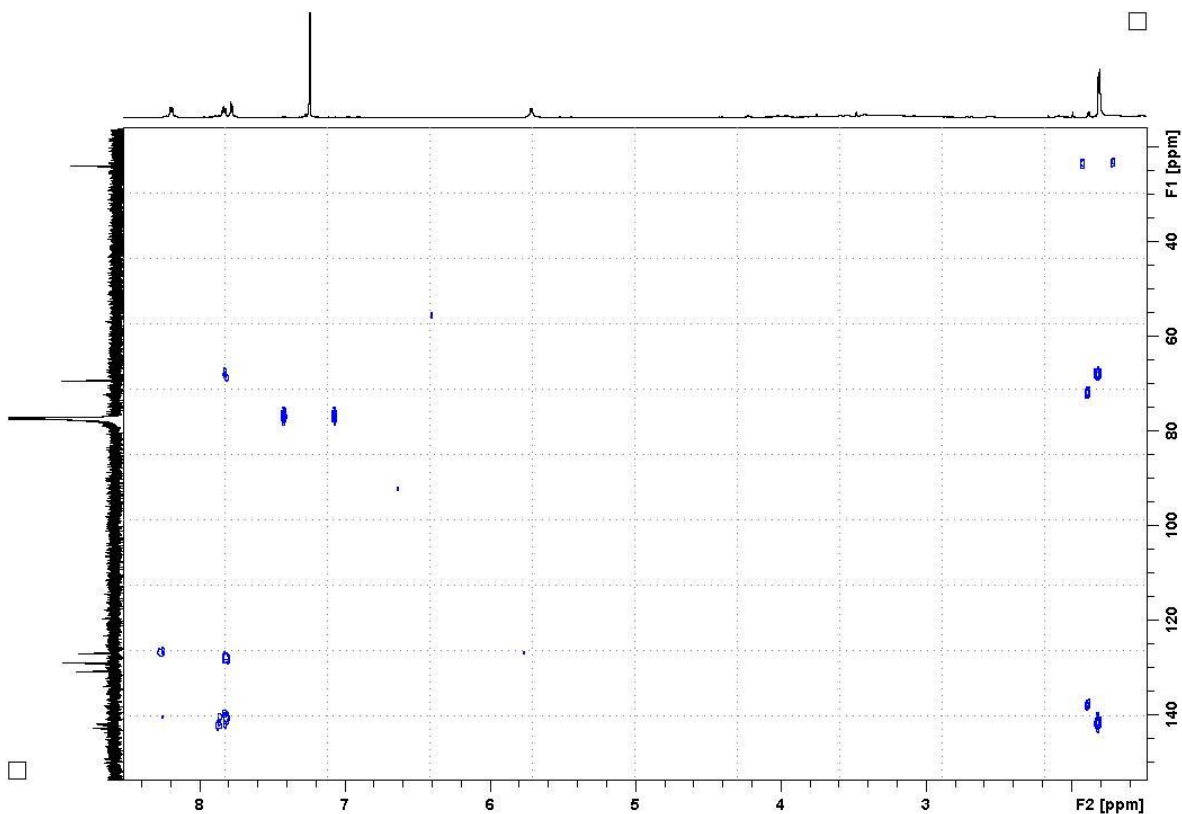
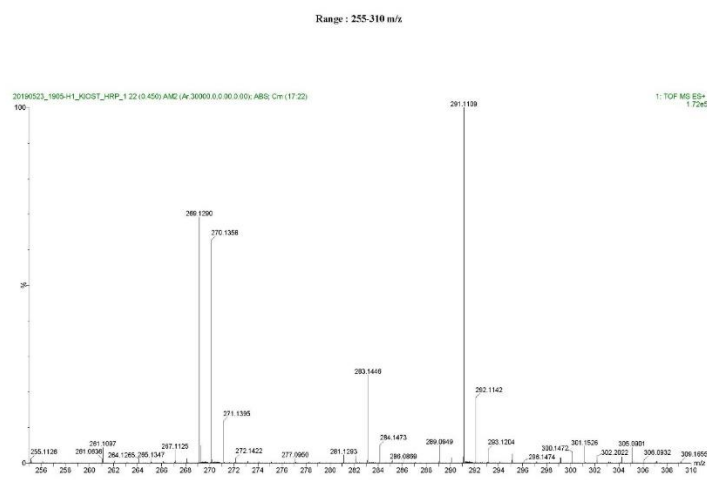


Figure S19. HMBC spectrum of compound 3 in CDCl₃.



Elemental Composition Report

Single Mass Analysis

Tolerance = 5.0 PPM / DBE: min = -1.5, max = 100.0

Element prediction: Off

Number of isotope peaks used for i-FIT = 3

Monoisotopic Mass, Even Electron Ions

89 formula(e) evaluated with 1 results within limits (all results (up to 1000) for each mass)

Elements Used:

C: 0-25 H: 0-20 N: 1-3 O: 1-4 Mn: 0-1

Minimum:

-1.5

Maximum: 500.0 5.0 100.0

Mass	Calc. Mass	mDa	PPM	DBE	i-FIT	Norm	Conf(%)	Formula
269.1290	269.1290	0.0	0.0	9.5	1081.1	n/a	n/a	C16 H17 N2 O2
291.1109	291.1109	0.0	0.0	9.5	894.3	n/a	n/a	C16 H16 N2 O2 Na

Figure S20. HRESI-MS spectrum of compound 3.

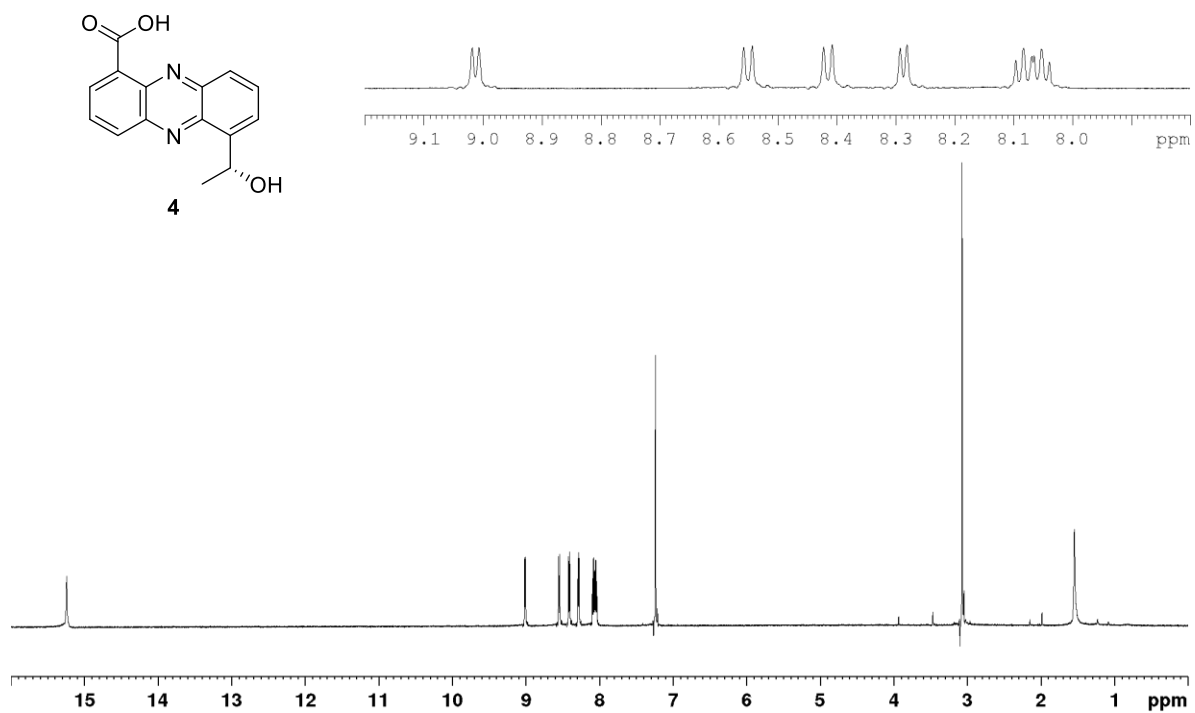


Figure S21. ¹H NMR spectrum of compound 4 (600 MHz, CDCl₃).

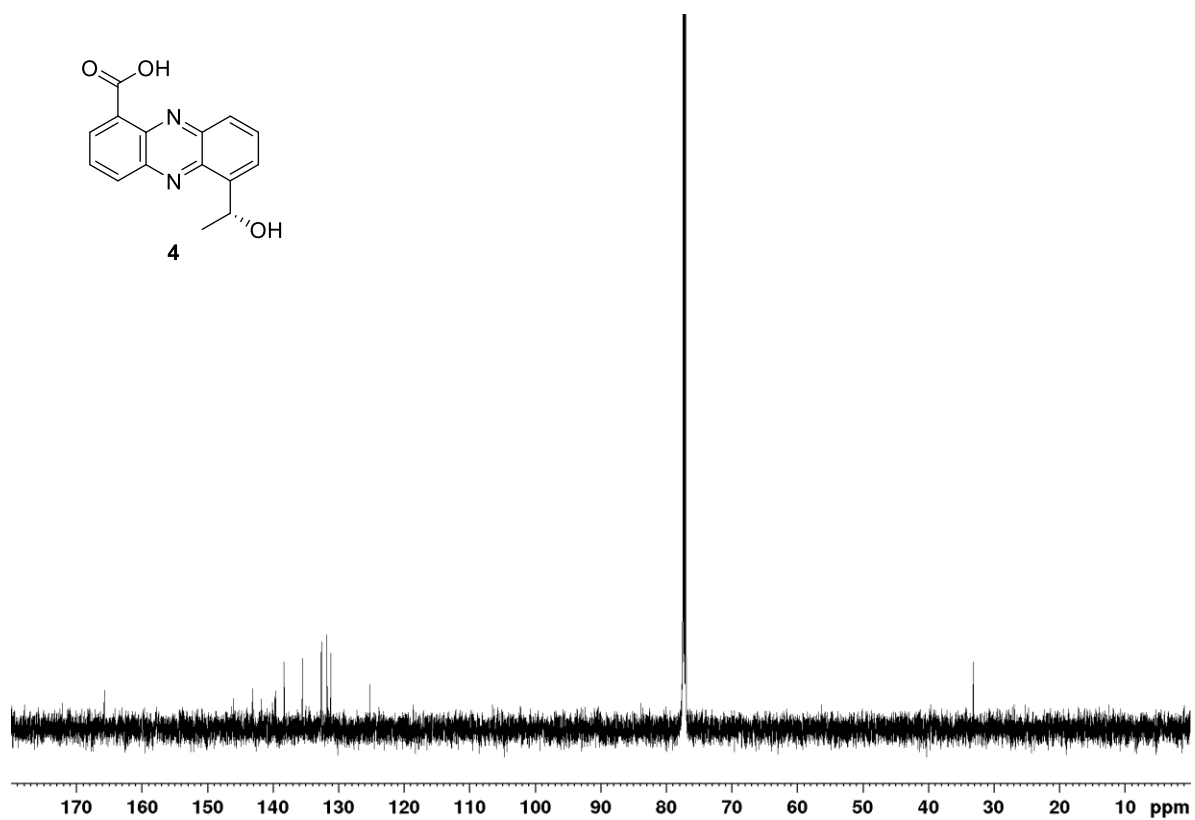


Figure S22. ¹³C NMR spectrum of compound 4 (150 MHz, CDCl₃).

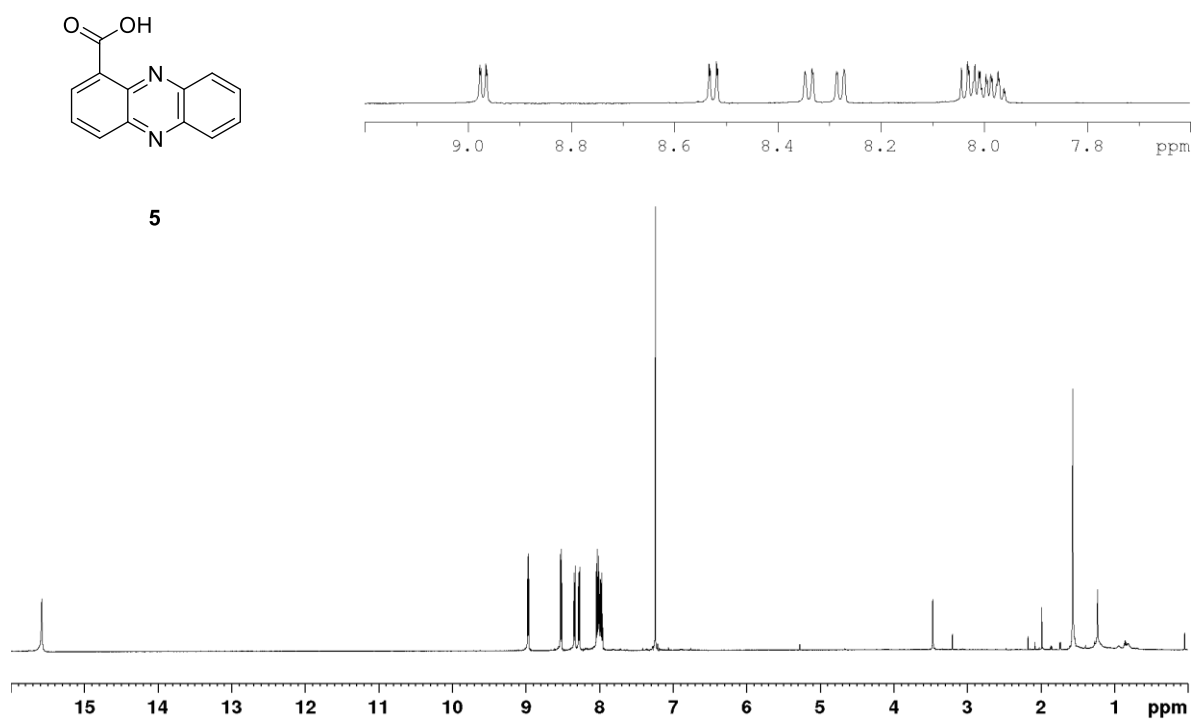


Figure S23. ^1H NMR spectrum of compound **5** (600 MHz, CDCl_3).

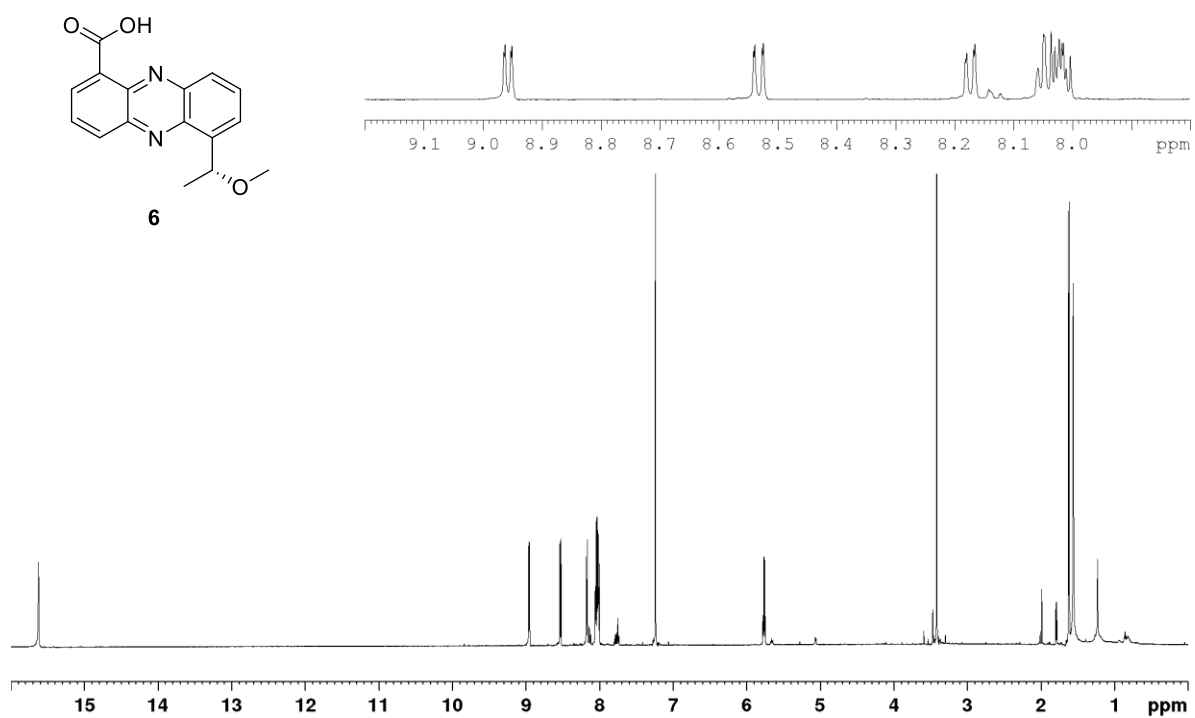


Figure S24. ^1H NMR spectrum of compound **6** (600 MHz, CDCl_3).

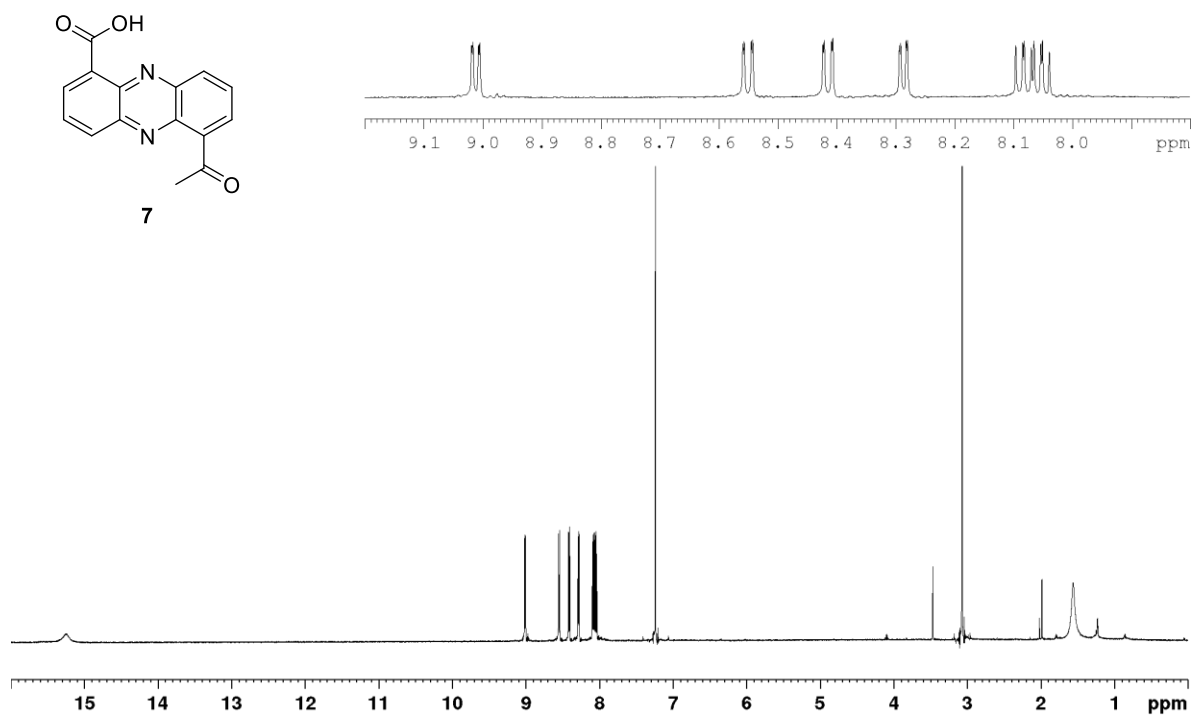


Figure S25. ¹H NMR spectrum of compound 7 (600 MHz, CDCl₃).

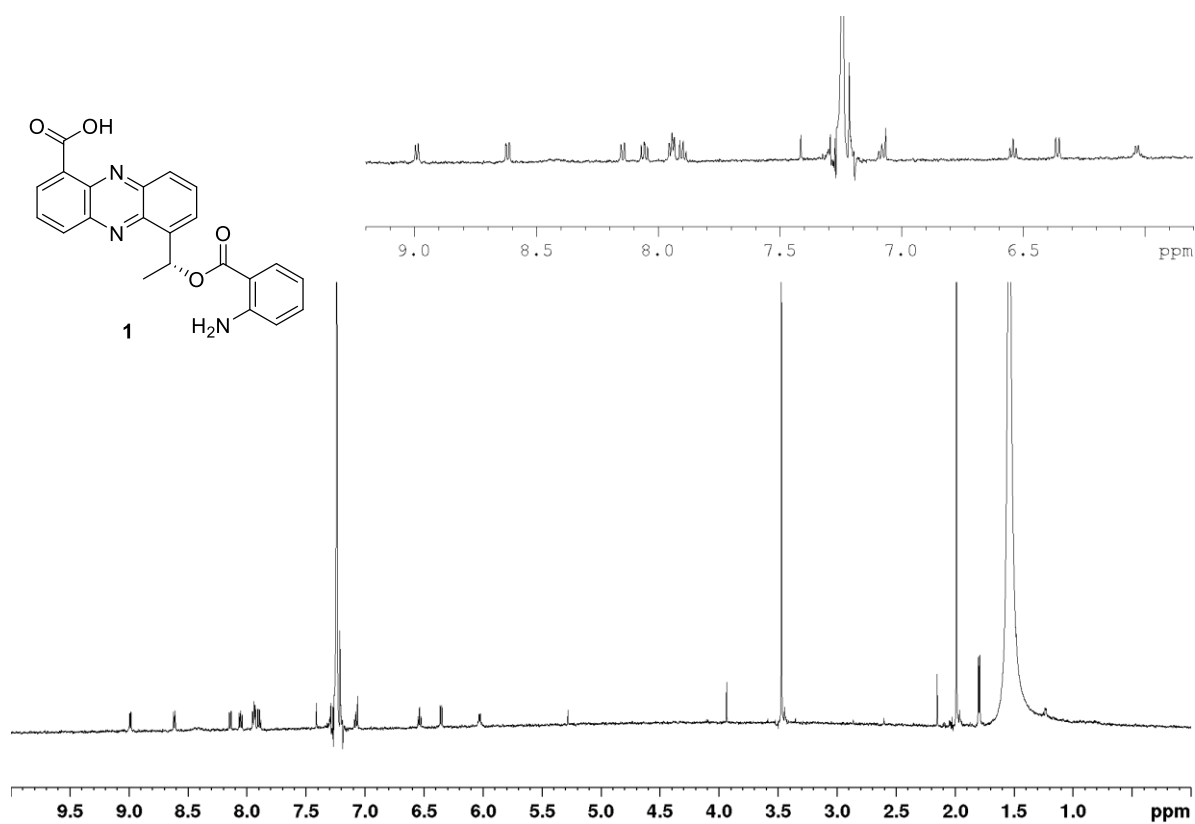


Figure S26. ¹H NMR spectrum of semi-synthesized 1 (600 MHz, CDCl₃).

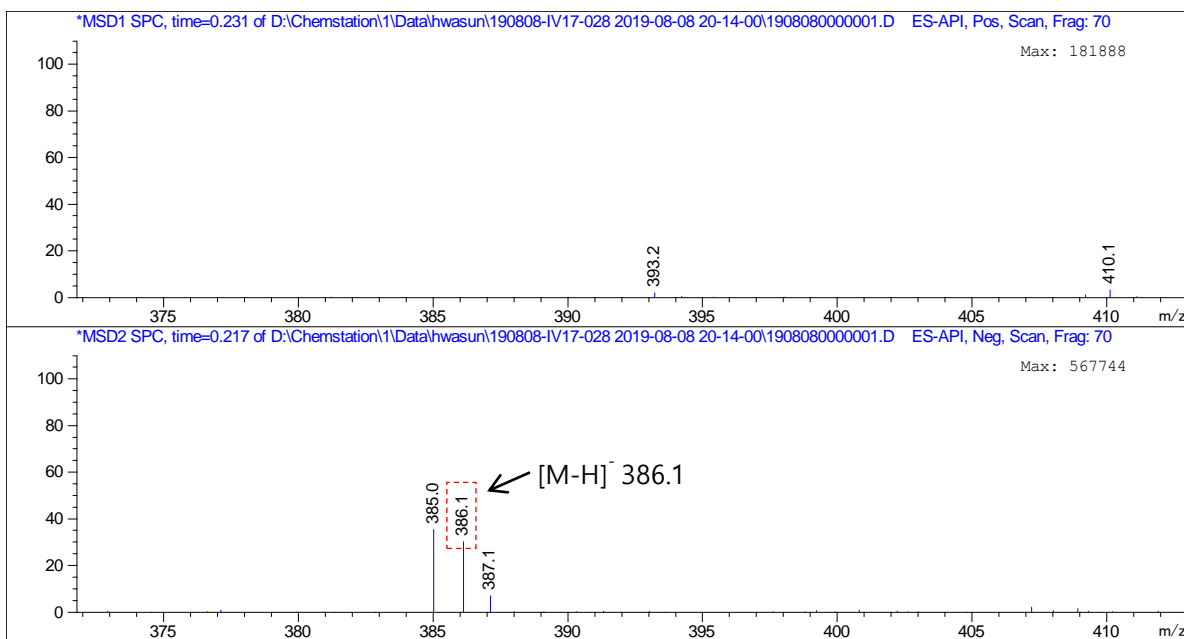


Figure S27. LR-MS spectrum of semi-synthesized **1**.

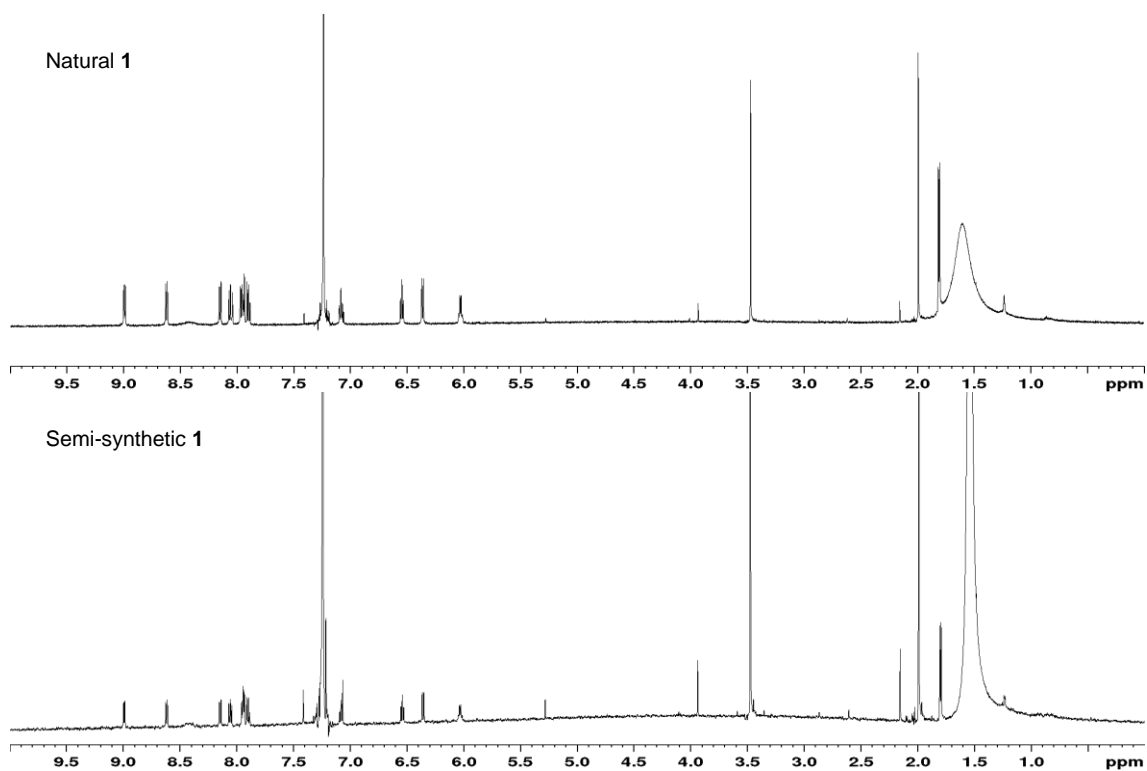


Figure S28. Comparison of ^1H NMR data between semi-synthesized **1** and natural **1**.