

## Supporting Information

# A novel marine natural product derived pyrroloiminoquinone with potent activity against skin cancer cells

Jaden Cowan <sup>1#</sup>, Mohammad Shadab <sup>#2</sup>, Dwayaja H. Nadkarni, Kailash K C, Sadanandan E. Velu <sup>\*1</sup> and Nabiha Yusuf <sup>\*,2,3</sup>

<sup>1</sup> Department of Chemistry, University of Alabama at Birmingham, 901, 14<sup>th</sup> Street S, Birmingham, AL-35294, USA

<sup>2</sup> Department of Dermatology, University of Alabama at Birmingham, 1670 University Boulevard, VH566A

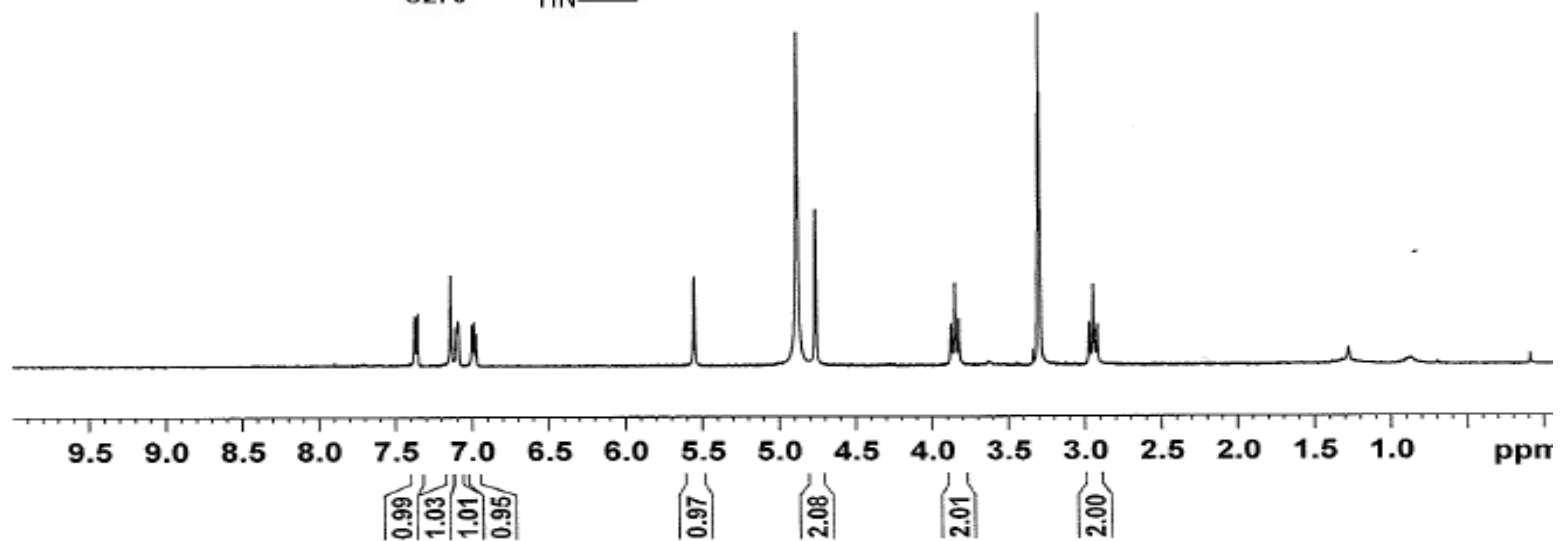
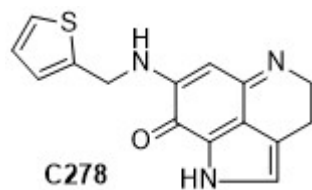
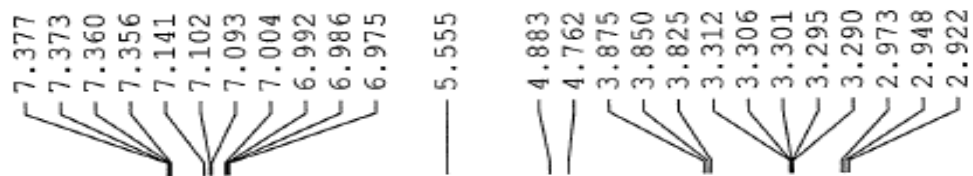
<sup>3</sup> Veteran Affairs Medical Center, Birmingham, AL-35294, USA

<sup>#</sup> Both authors contributed equally to this manuscript

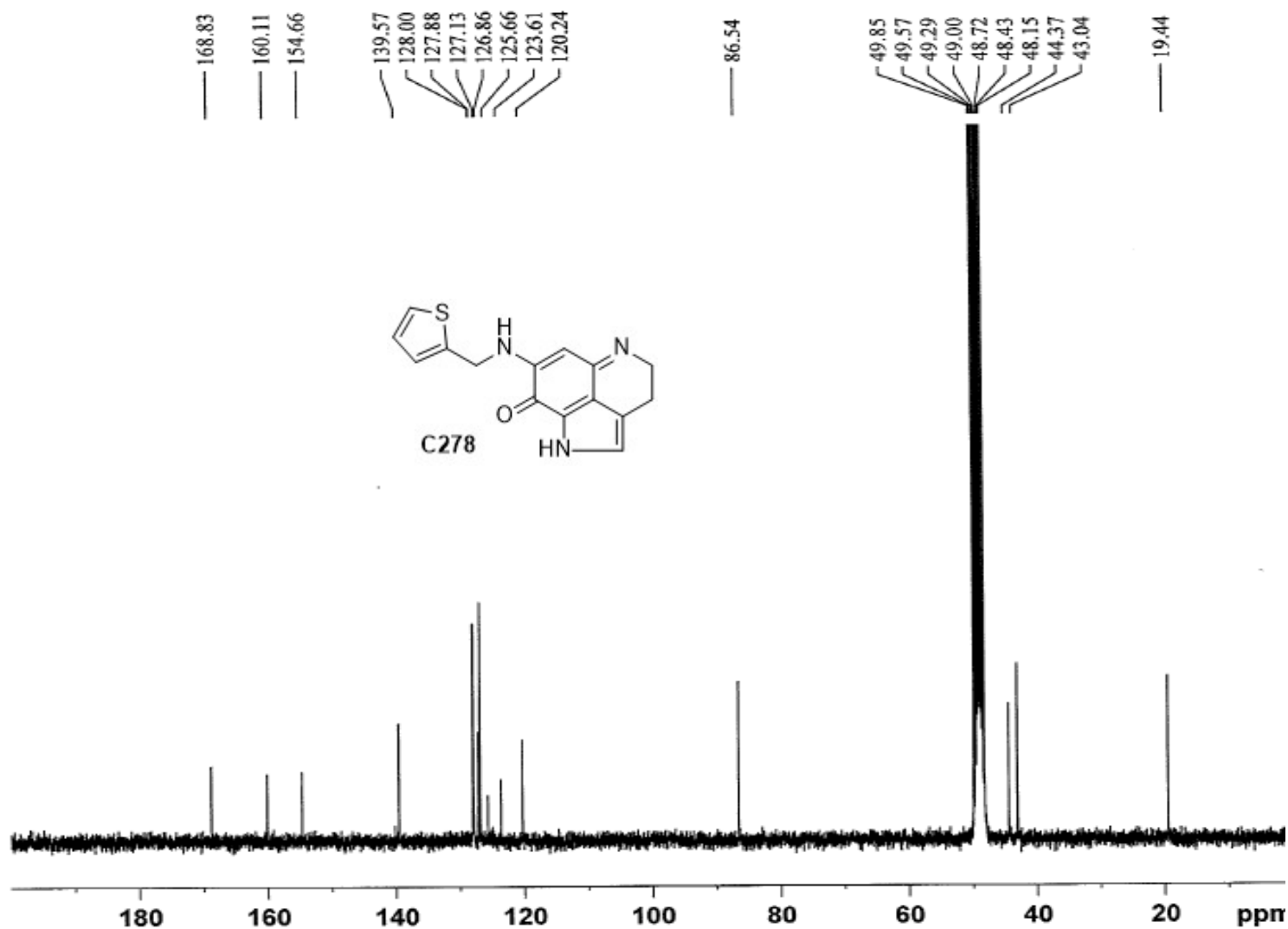
<sup>\*</sup> Joint Corresponding Authors: Nabiha Yusuf, PhD, MSPH, Associate Professor, Department of Dermatology, University of Alabama at Birmingham, 1670 University Boulevard, VH 566A, PO Box 202, Birmingham, Alabama 35294-0019; Tel.: (205) 934-7432, Fax: (205) 934-5745; E-mail: [nabihayusuf@uabmc.edu](mailto:nabihayusuf@uabmc.edu);  
Sadanandan E. Velu, PhD, Associate Professor, Department of Chemistry, CHEM 280, University of Alabama at Birmingham, 901, 14th Street S, Birmingham, AL 35294-1240, USA, Tel: (205) 975 2478 ; Fax: (205) 934-2543; Email: [svelu@uab.edu](mailto:svelu@uab.edu)

Content: <sup>1</sup>H-NMR, <sup>13</sup>C-NMR and Mass spectrum of C278.

<sup>1</sup>H NMR of Compound C278



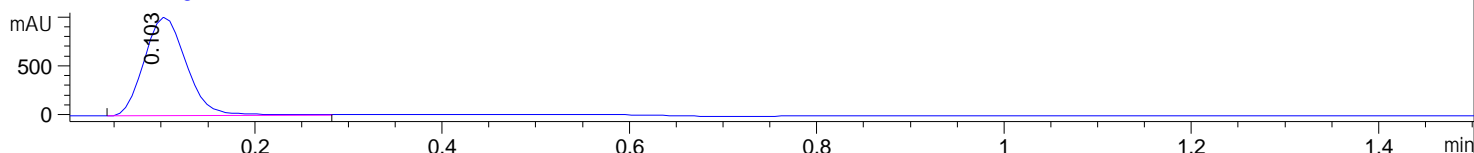
<sup>13</sup>C-NMR of Compound C278



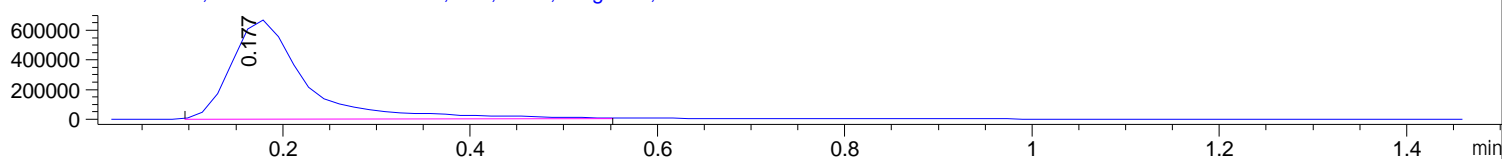
File ..7-19\160719-L\_175-1000DWB 220-420NM-28399.D Tgt Mass (EZX):

Injection Date : 16-Jul-19, 16:29:57 Seq. Line : 0  
Sample Name : JC-83 Location : P1-F-04  
Acq. Operator : Syed Kaleem Ahmed Inj : 0  
Spec. Reported : MS Integration Inj Volume : 1 ul  
Acq. Method : C:\Chem32\2\METHODS\L\_175-1000DWB 220-420NM.M  
Analysis Method : C:\Chem32\2\METHODS\L\_175-1000DWB 220-420NM.M  
Sample Info : Easy-Access Method: 'HMW General Loop 175-1000D'  
Method Info : Solvent 50:50 H2O:MeOH  
0.1% FA  
no column

DAD1 B, Sig=254,4 Ref=off



MSD1 TIC, MS File MM-ES+APCI, Pos, Scan, Frag: 200, Positive



Positive

