

Article

# High-Performance Sample Substrate of Gold Nanoparticle Multilayers for Surface-Assisted Laser Desorption/Ionization Mass Spectrometry

Yen-Chen Liu <sup>1,†</sup>, Yi-Hsuan Chang <sup>1,†</sup>, Yun-Ho Lin <sup>2,3,†</sup>, Chien-Chung Liou <sup>4</sup> and

Tsung-Rong Kuo <sup>1,5,6,\*</sup>

<sup>1</sup> Graduate Institute of Nanomedicine and Medical Engineering, College of Biomedical Engineering, Taipei Medical University, Taipei 11031, Taiwan

<sup>2</sup> Division of Oral Pathology, Department of Dentistry, Taipei Medical University Hospital, Taipei 11031, Taiwan

<sup>3</sup> School of Dentistry, College of Oral Medicine, Taipei Medical University, Taipei 11031, Taiwan

<sup>4</sup> Department of Chemistry, Tunghai University, Taichung 40704, Taiwan

<sup>5</sup> International Ph.D. Program in Biomedical Engineering, College of Biomedical Engineering, Taipei Medical University, Taipei 11031, Taiwan

<sup>6</sup> Research Center of Biomedical Device, Taipei Medical University, Taipei 11031, Taiwan

\* Correspondence: trkuo@tmu.edu.tw

† These authors contributed equally to this work.

Received: 4 July 2019; Accepted: 23 July 2019; Published: date

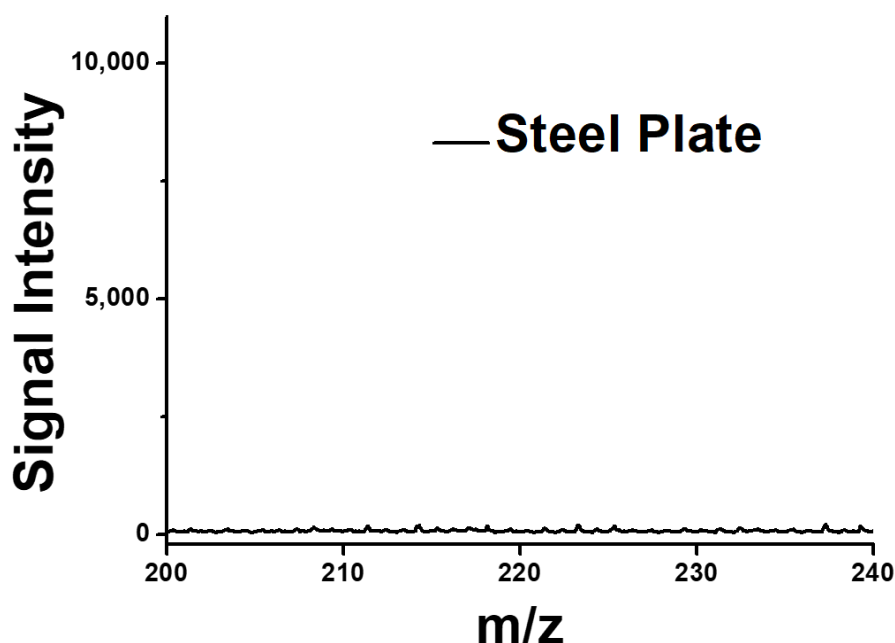


Figure S1. Mass spectra of glucose using steel plate without coating in SALDI-MS.

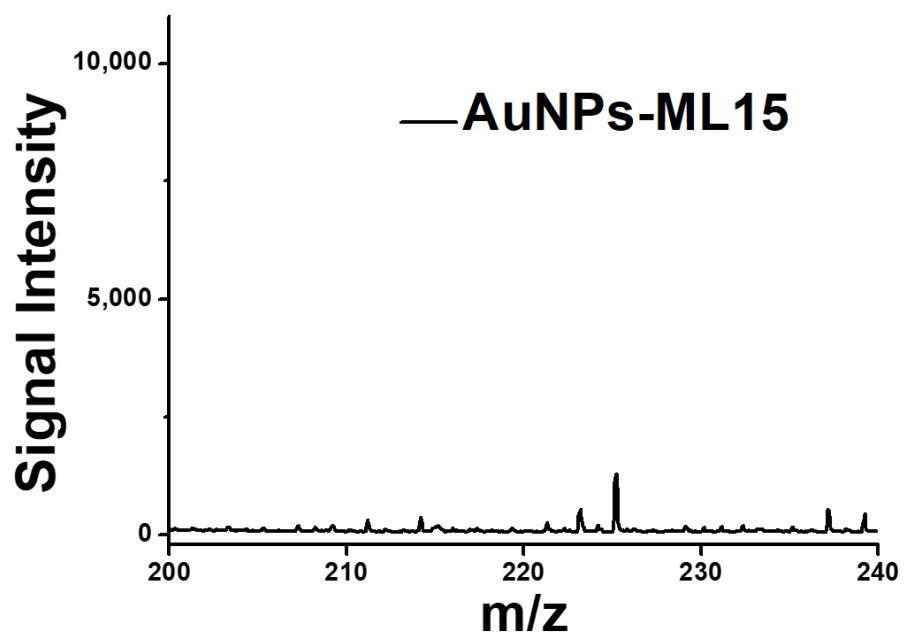


Figure S2. The background signals of AuNPs-ML15 sample substrate in SALDI-MS.