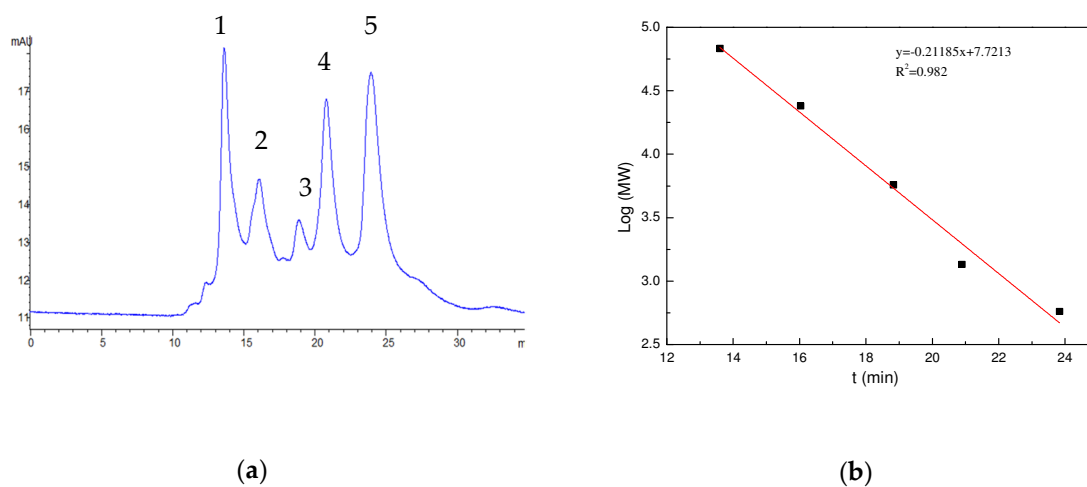


Supplementary Materials:



**Figure S1.** GPC chromatograms of standard materials (a) and standard curve (b) obtained from standard materials: (1) BSA (66 kDa), (2) trypsin inhibitor (24 kDa), (3) human insulin (5808 Da), (4) vitamin B<sub>12</sub> (1355 Da), and (5) FFVAP (577.92 Da).