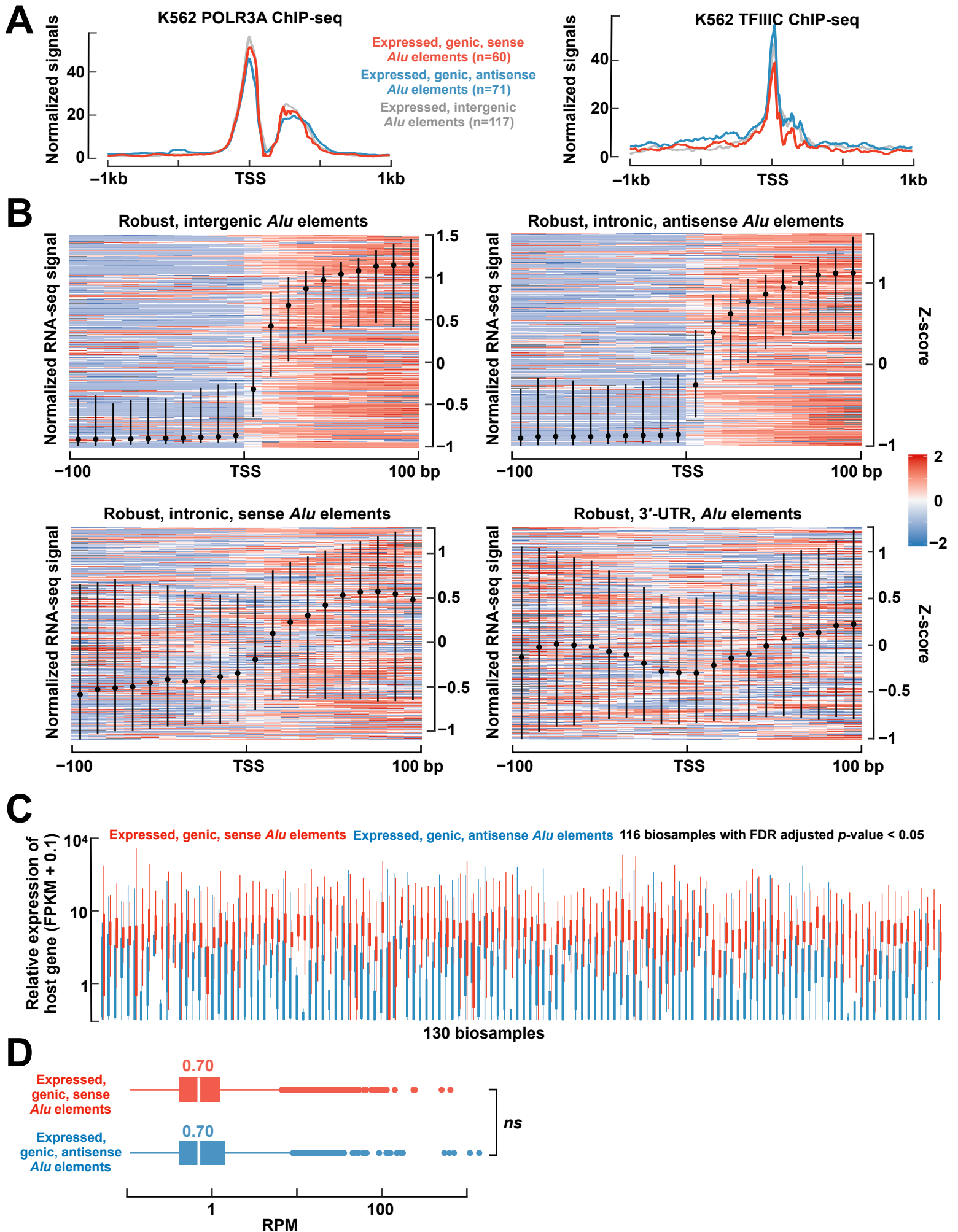


Zhang et al., Supplemental Figure S4



Supplemental Figure S4. Expressed *Alu* elements identified by our approach are preferentially transcribed by Pol III.

A. Sense (red lines), antisense (blue lines), and intergenic (grey lines) *Alu* elements expressed in K562 cells showed high ChIP-seq signals of POLR3A (left) and TFIIC (right) in K562.

B. RNA-seq signal in the ± 100 bp window centered on the TSSs of intergenic, intronic sense, and intronic antisense *Alu* elements, and *Alu* elements located in 3'-UTR identified by RAMPAGE.

C. Host genes of expressed sense, intronic *Alu* elements are significantly more highly expressed than host genes of antisense *Alu* elements expressed in the same biosamples. Only biosamples with more than 10 host genes were included in this analysis. Wilcoxon rank-sum test *p*-values are reported.

D. Expressed sense *Alu* elements showed similar expression levels (measured by RPM) to expressed antisense *Alu* elements. Wilcoxon rank-sum test *p*-values are shown.