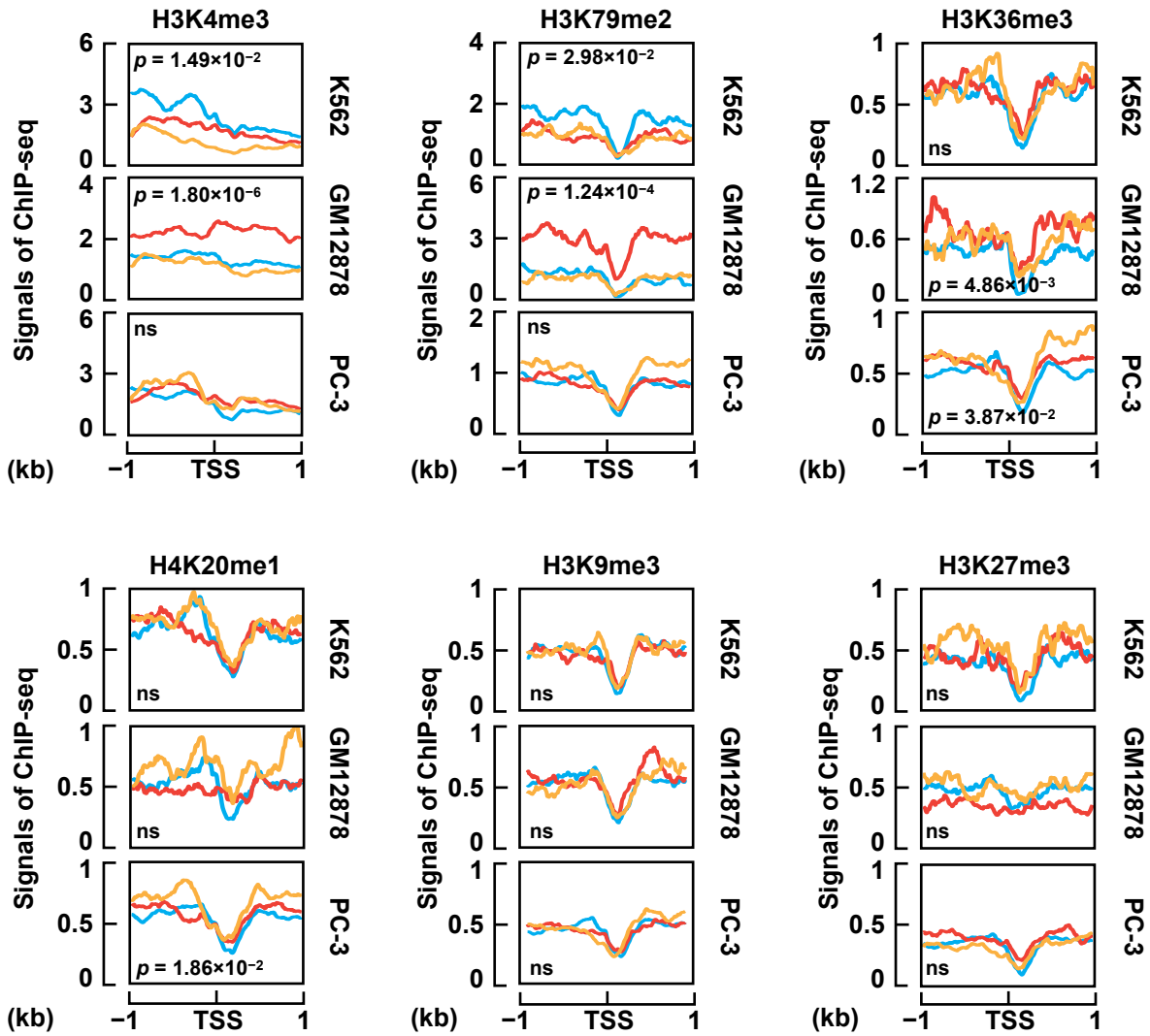


# Zhang et al., Supplemental Figure S7

K562-specific *Alu* elements

GM12878-specific *Alu* elements

PC-3-specific *Alu* elements



**Supplemental Figure S7. Cell type-specific *Alu* expression corresponds to cell type-specific histone modifications.** Average ChIP-seq signals for H3K4me3, H3K79me2, H3K36me3, H4K20me1, H3K9me3, and H3K27me3 per cell type (rows) in the  $\pm 1$  kb regions around *Alu* TSS for cell type-specific expressed *Alu* elements. Student's *t*-test *p*-values are shown for comparing the average signals in the corresponding cell type against the other two cell types.