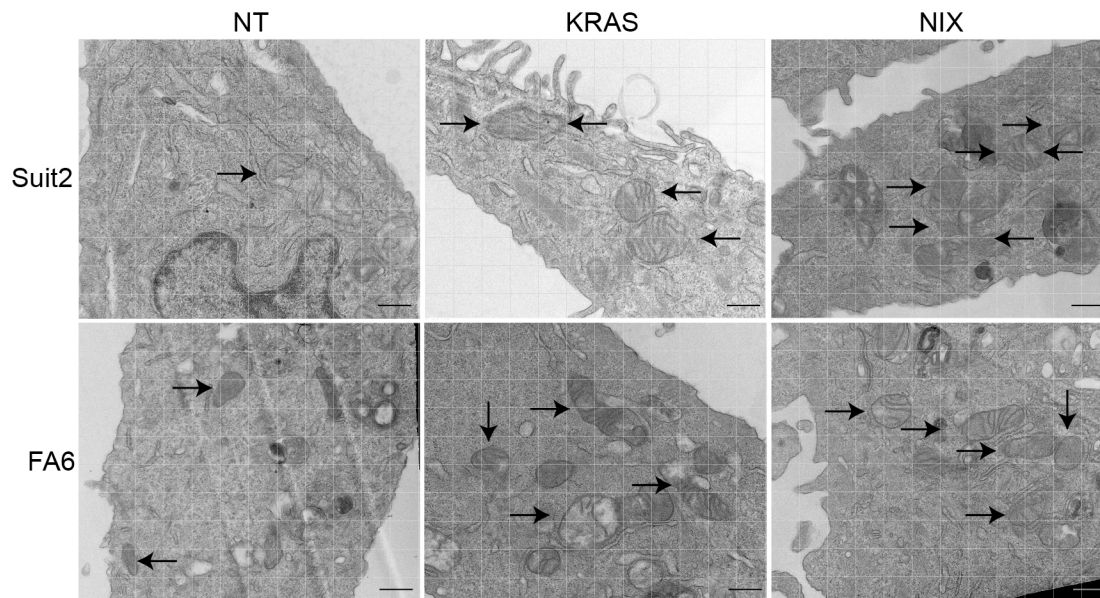
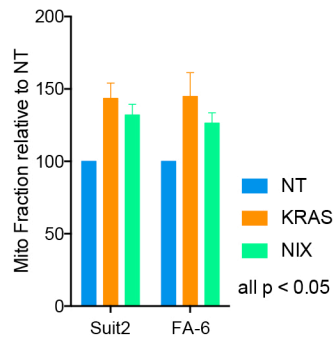


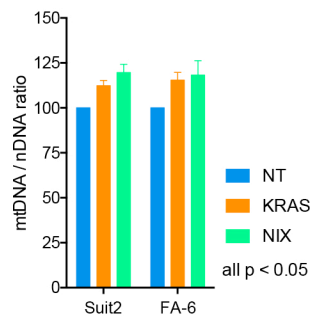
A



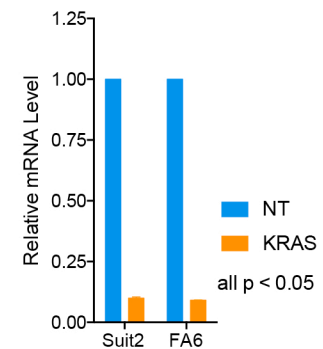
B



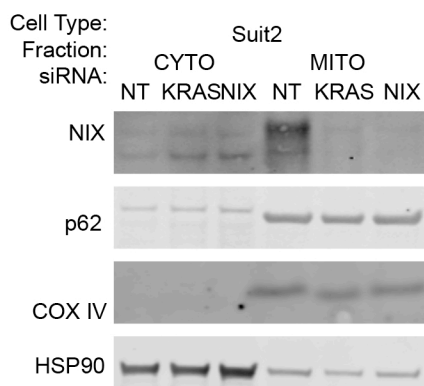
C



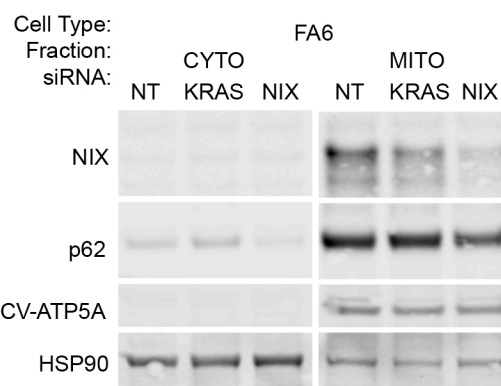
D



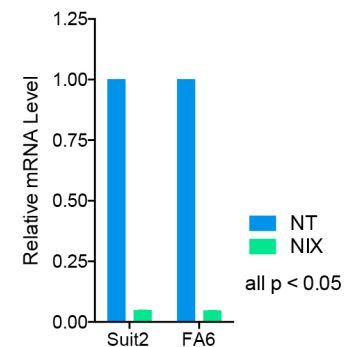
E



F



G



Supplementary Figure 2. Acute knockdown of NIX or KRAS increase the mitochondrial fraction of KRAS-mutant human PDAC cell lines.

A) Representative TEM micrographs of human cancer cell lines transfected with control (NT), KRAS, or NIX siRNA and cultured in low glucose medium for 96 hours. Scale bar: 500 nm. Black arrows: mitochondria. B) Quantification of mitochondrial fraction in TEM micrographs in (A) ($n=20$ cells per condition, $n=3$ independent experiments per line). C) mtDNA/nDNA ratio determined by qPCR at 96 hours after siRNA knockdown of KRAS or NIX in human cancer cell lines cultured in low glucose. D) RT-qPCR to confirm KRAS siRNA knock down in human cancer cell lines. E/F) Western blots for indicated proteins in cytoplasmic and mitochondrial-enriched (CYTO/MITO) fractions of Suit2 cells (E) or FA6 cells (F) at 96 hours post transfection with control (NT), KRAS, or NIX siRNA. G) RT-qPCR confirming siRNA knockdown of NIX in human 2D cell lines. Two-way ANOVA with Holm-Sidak test performed for B-D, G.