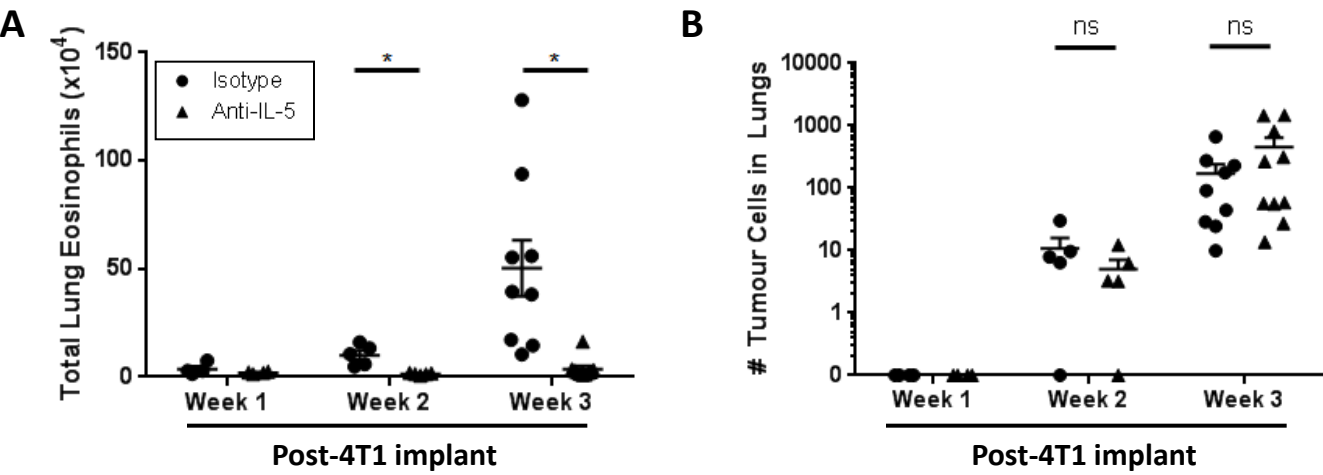


Supplemental Figure 10



Supplemental Figure 11: **A**) Total number of lung eosinophils in 4T1 tumor-bearing mice treated with anti-IL5 antibody (clone TRFK5) or isotype control. **B**) Number of 4T1 cells in the lungs of mice implanted with orthotopic 4T1 tumors and treated with anti-IL5 antibody or isotype control.