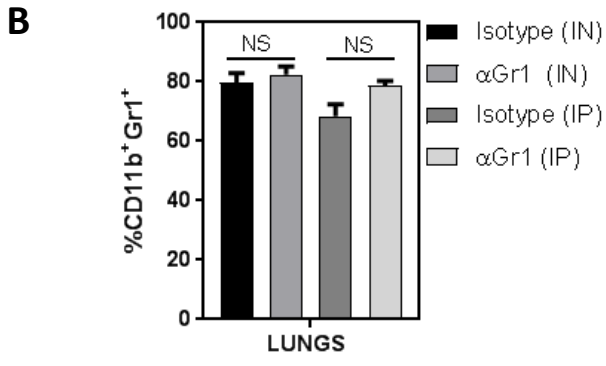
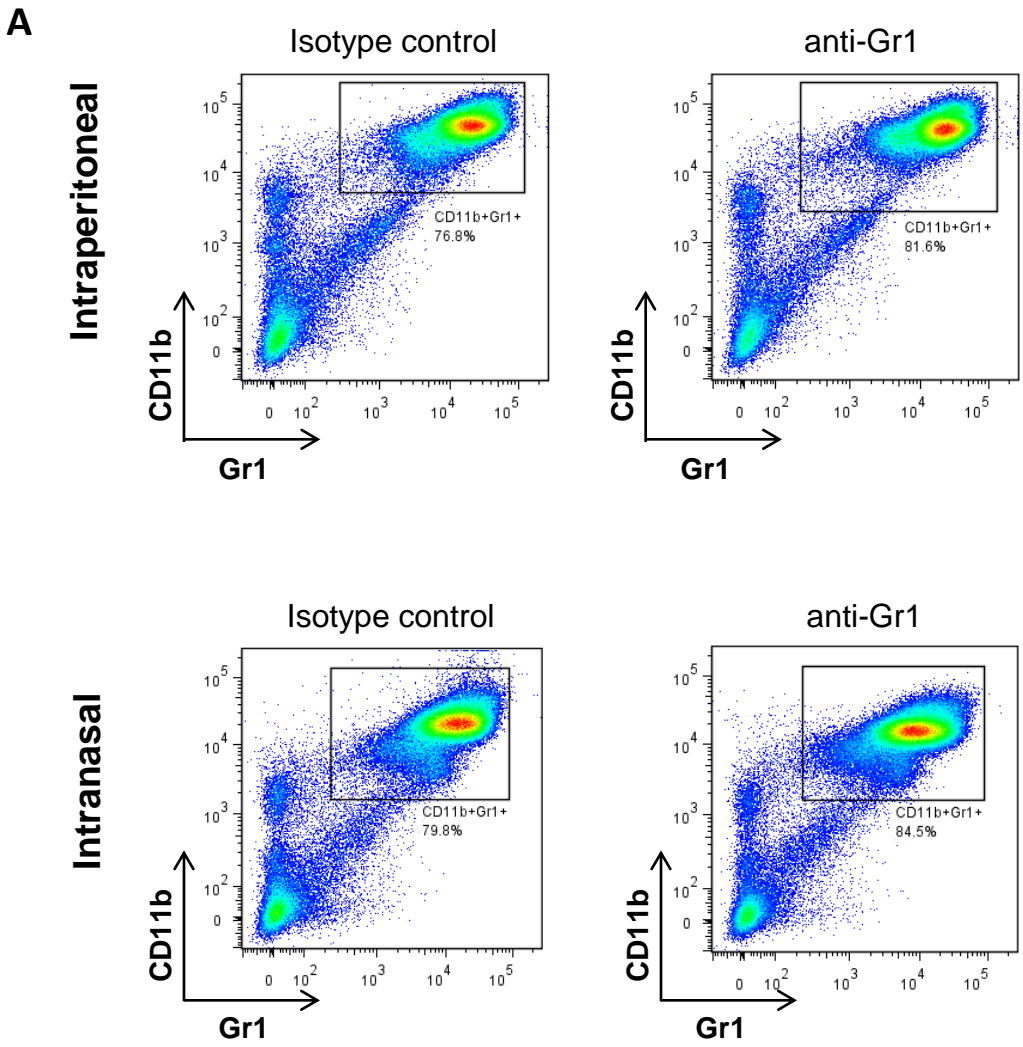


# Supplemental Figure 6



Supplemental Figure 7: Treatment of 4T1-tumour-bearing mice treated with anti-Gr1 antibody did not deplete lung CD11b+Gr1+ cells. **A)** Representative flow plots of %CD11b+Gr1+ cells in the lungs of 4T1-tumor bearing mice treated with 100ug anti-Gr1 antibody or isotype control (intraperitoneal injection or intranasally) every 4 days until tissue harvest on day 21. **B)** Quantification of %CD11b+Gr1+ cells in the lungs of 4T1-tumor bearing mice treated with 100ug anti-Gr1 antibody or isotype control. n=6 mice per group.