

Supplementary Online Content

Tung S, Davis LE, Hallet J, et al; Pancreas Cancer Population Outcomes Research Group. Population-level symptom assessment following pancreaticoduodenectomy for adenocarcinoma. *JAMA Surg*. Published online September 4, 2019.
doi:10.1001/jamasurg.2019.3348

eTable 1. OHIP and CIHI cods

eTable 2. Characteristics of pancreatic adenocarcinoma patients undergoing pancreaticoduodenectomy, stratified by recording of ESAS in the twelve months following surgery

eFigure 1. Proportion of patients undergoing surgery with adjuvant chemotherapy (N=410) and undergoing surgery alone (N=122) reporting at least one moderate-to-severe ESAS score (≥ 4) following surgery

eFigure 2. Proportion of patients undergoing surgery with adjuvant chemotherapy (A) and undergoing surgery alone (B) reporting moderate-to-severe ESAS scores (≥ 4) for all symptoms

This supplementary material has been provided by the authors to give readers additional information about their work.

eTable 1: OHIP and CIHI codes

	Database	Codes
Pancreatic Cancer	<i>OCR</i>	8000, 8001, 8010, 8020, 8021, 8031, 8035, 8140, 8144, 8145, 8255, 8340, 8341, 8344, 8440, 8442, 8470, 8481, 8490, 8500, 8560, 8570, 8574, 8575, 9990
Pancreaticoduodenectomy	<i>CIHI</i>	1.OK.87.^, 1.OK.91.^
Receipt of Chemotherapy	<i>OHIP</i>	G381, G281, G339, G345, G359.
Receipt of Radiation	<i>ALR</i>	120, 130, 503, 510, 511, 512, 519, 520, 521, 522, 523, 524, 525, 526, 527, 528, 529, 530, 531, 532, 533, 534, 535, 536, 537, 538, 539, 540, 541, 542, 548, 549, 561, 563, 565, 566, 568, 570, 571, 572, 573, 574, 575, 581, 582, 590, 591, 592, 594, 596, 597

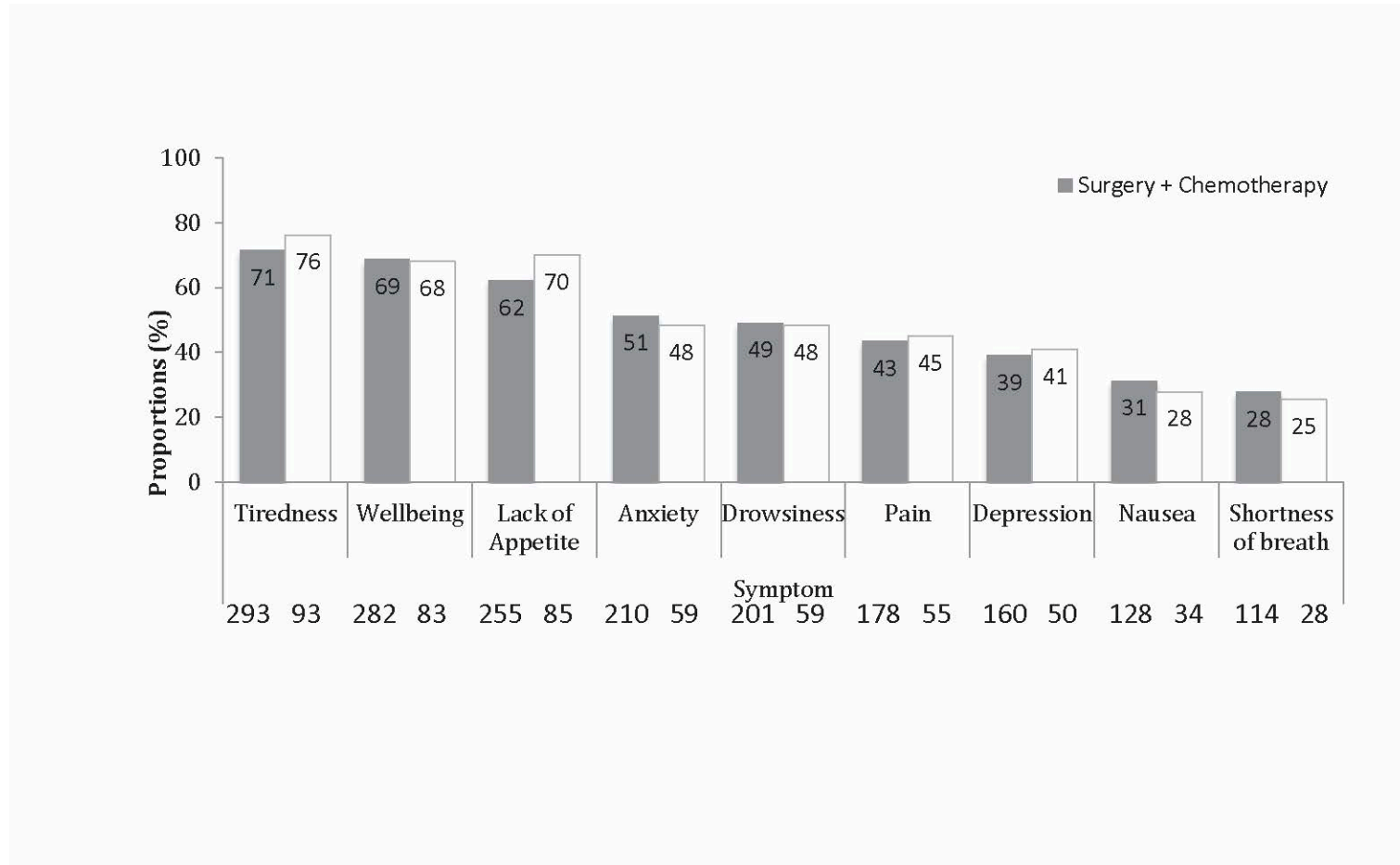
eTable 2: Characteristics of pancreatic adenocarcinoma patients undergoing pancreaticoduodenectomy, stratified by recording of ESAS in the twelve months following surgery.

CHARACTERISTIC	No ESAS N=89	≥1 ESAS N=615	p-Value
PATIENT DEMOGRAPHICS			
Age category (years old)			
<55	15 (12.4%)	106 (87.6%)	0.009
55-64	24 (11.2%)	190 (88.8%)	
65-74	25 (10.3%)	217 (89.7%)	
75+	25 (19.7%)	102 (80.3%)	
Sex			
Female	49 (14.7%)	285 (85.3%)	0.12
Male	40 (10.8%)	330 (89.2%)	
Income Quintile			
1 st (lowest)	13 (12.1%)	94 (87.9%)	0.70
2 nd	15 (10.5%)	128 (89.5%)	
3 rd	18 (11.6%)	137 (88.4%)	
4 th	18 (12.7%)	124 (87.3%)	
5 th (highest)	25 (16.2%)	129 (83.8%)	
Residence			
Urban	80 (12.9%)	540 (87.1%)	0.57
Rural	9 (10.7%)	75 (89.3%)	
Immigration status			
Non-immigrants	80 (12.1%)	581 (87.9%)	<.001
Immigrants	9 (20.9%)	34 (79.1%)	
Comorbidity burden			
Low (ADG <10)	51 (13.1%)	339 (87.7%)	0.91
High (ADG ≥10)	38 (12.1%)	276 (87.9%)	
DISEASE AND TREATMENT FACTORS			
Year of surgery			
2009-2012	18 (5.8%)	290 (94.2%)	0.021
2013-2016	71 (17.9%)	325 (82.1%)	
Treatment course			
No adjuvant therapy	34 (21.8%)	122 (78.2%)	<.001
Adjuvant chemotherapy	49 (10.7%)	410 (89.3%)	
Adjuvant chemoradiation	6 (6.7%)	83 (93.3%)	

Values are N(%) showing row percent.

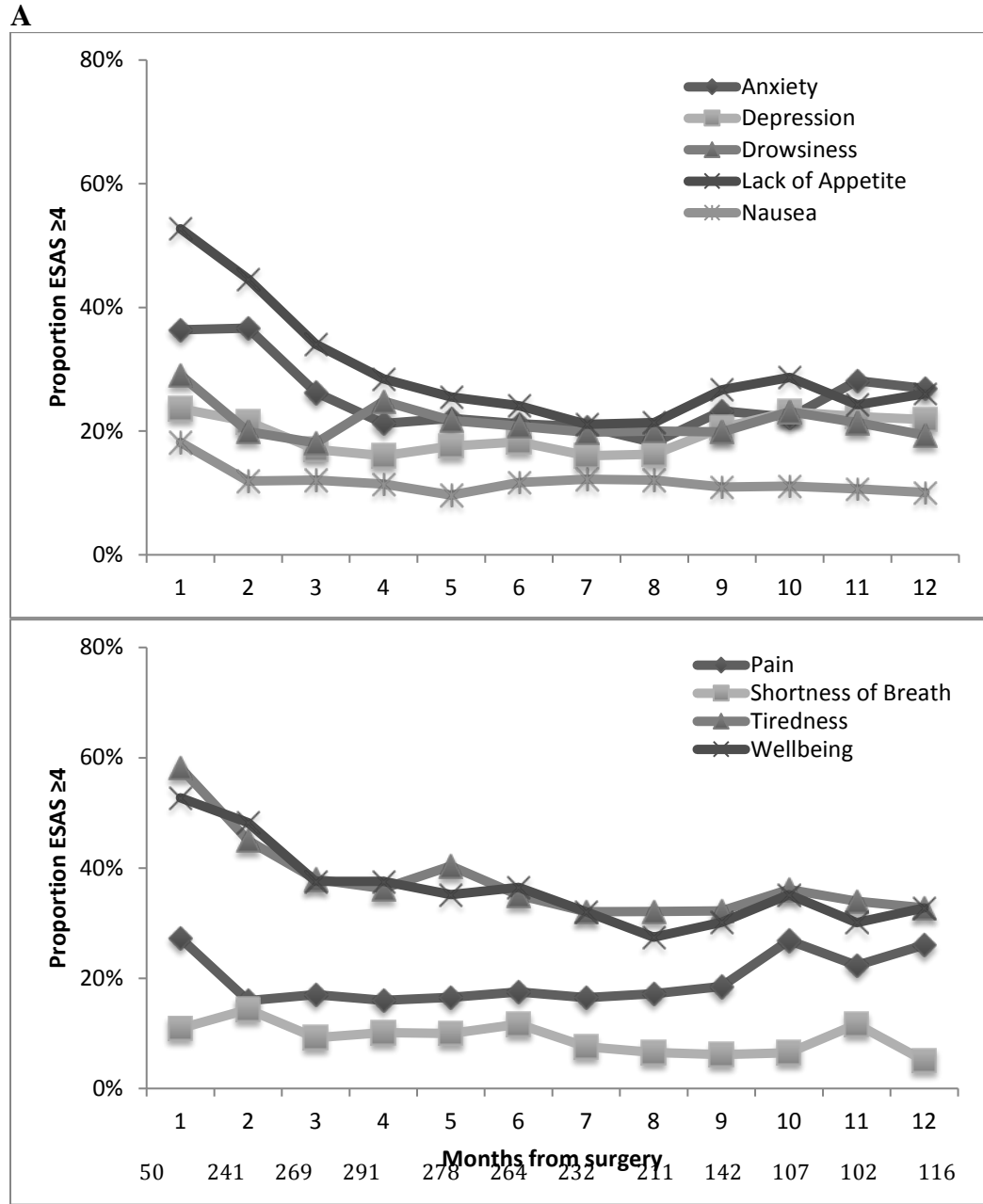
Abbreviations: ESAS: Edmonton Symptom Assessment Scale; SD: Standard Deviation; ADG: Aggregate Diagnosis Group

eFigure 1: Proportion of patients undergoing surgery with adjuvant chemotherapy (N=410) and undergoing surgery alone (N=122) reporting at least one moderate-to-severe ESAS score (≥ 4) following surgery

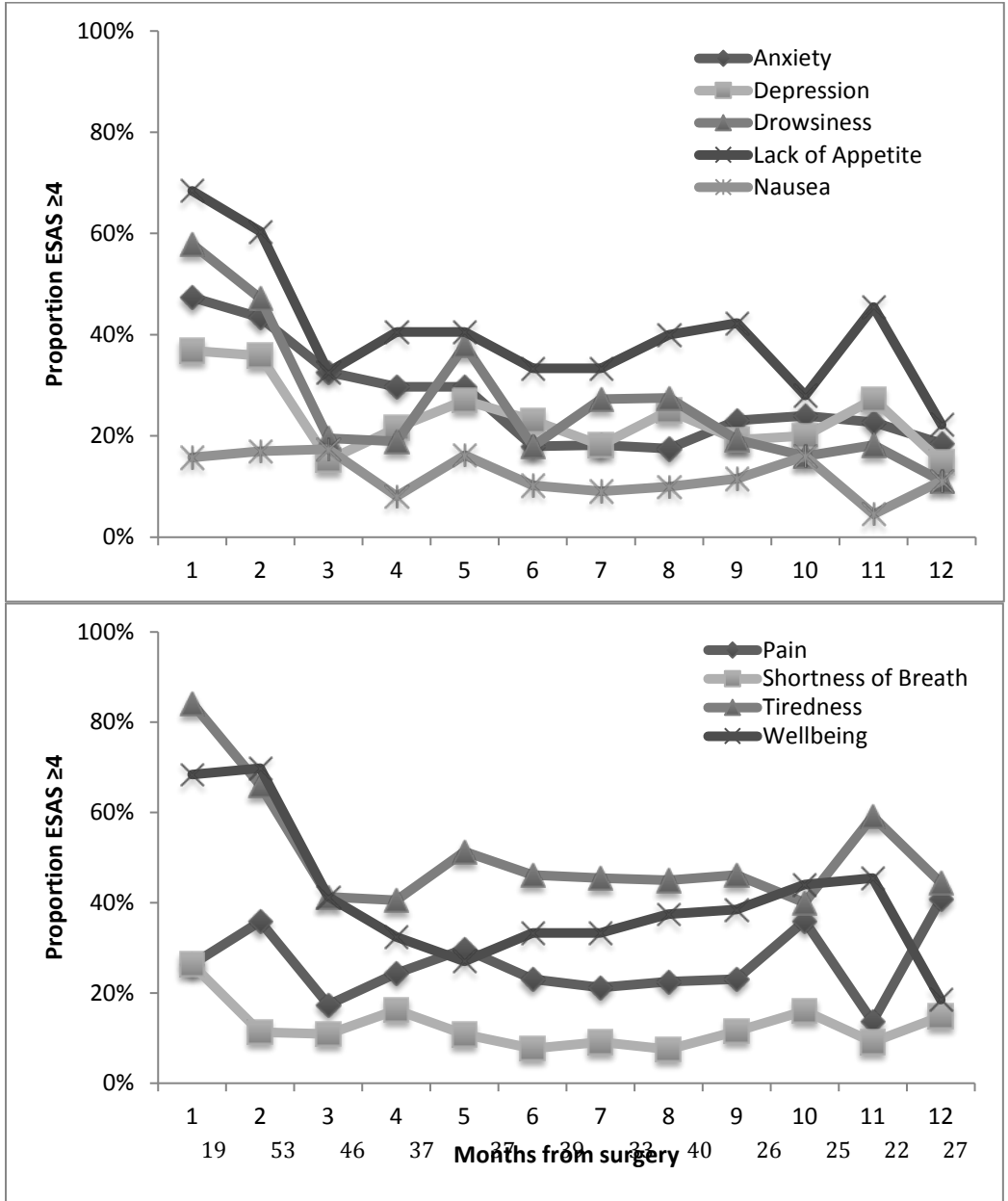


Numbers under the x-axis indicate the total number of patients reporting at least one moderate-to-severe ESAS score for each symptom, while numbers within bars represent proportion (%) of patients within cohort reporting at least one moderate-to-severe ESAS score for each symptom.

eFigure 2: Proportion of patients undergoing surgery with adjuvant chemotherapy (A) and undergoing surgery alone (B) reporting moderate-to-severe ESAS scores (≥ 4) for all symptoms



B



Trendlines facilitate visualization of trends over time but do not represent continuous data. Numbers under the x-axis indicate the denominator for each month.