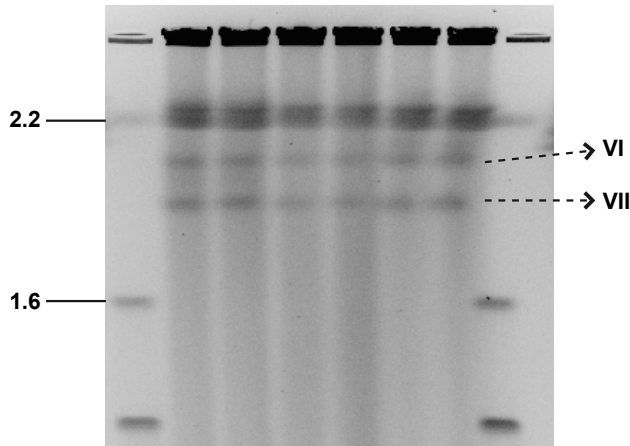
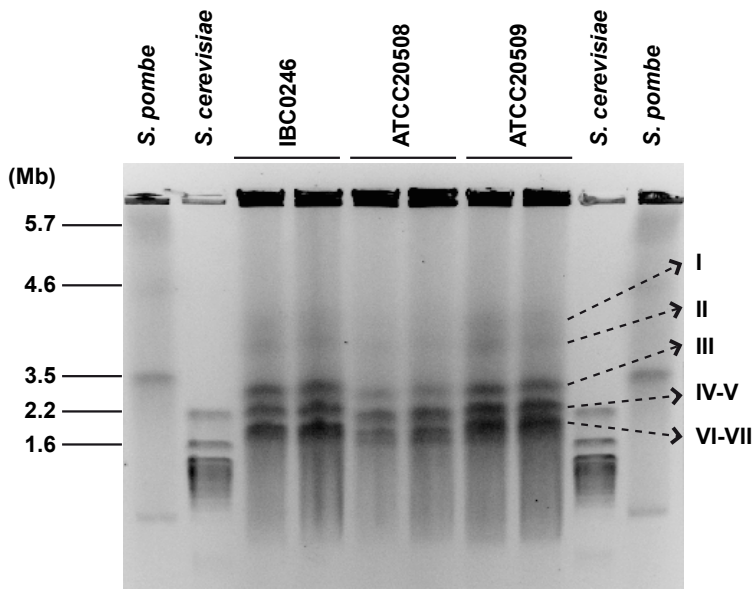


**A**



Chromosome	Size (~est., Mb)	Potentially corresponding contig in ATCC20508 assembly	Contig size (Mb)
I	4	1	4.1
II	3.8	2	3.8
III	3	3	3.2
IV	2.3	4	2.7
V	2.3	5	2.2
VI	2	6	2.0
VII	1.8	7+8	0.9+0.8
Total	19.2		19.8

**B**

