

Supplemental Data

Heterozygous *FOXN1* Variants Cause Low TRECs and Severe T Cell Lymphopenia, Revealing a Crucial Role of FOXN1 in Supporting Early Thymopoiesis

Marita Bosticardo, Yasuhiro Yamazaki, Jennifer Cowan, Giuliana Giardino, Cristina Corsino, Giulia Scalia, Rosaria Prencipe, Melanie Ruffner, David A. Hill, Inga Sakovich, Irma Yemialyanava, Jonathan S. Tam, Nurcicek Padem, Melissa E. Elder, John W. Sleasman, Elena Perez, Hana Niebur, Christine M. Seroogy, Svetlana Sharapova, Jennifer Gebbia, Gary Ira Kleiner, Jane Peake, Jordan K. Abbott, Erwin W. Gelfand, Elena Crestani, Catherine Biggs, Manish J. Butte, Nicholas Hartog, Anthony Hayward, Karin Chen, Jennifer Heimall, Filiz Seeborg, Lisa M. Bartnikas, Megan A. Cooper, Claudio Pignata, Avinash Bhandoola, and Luigi D. Notarangelo

Figure S1. Proportion of subjects with cell counts below the lower limit of normal

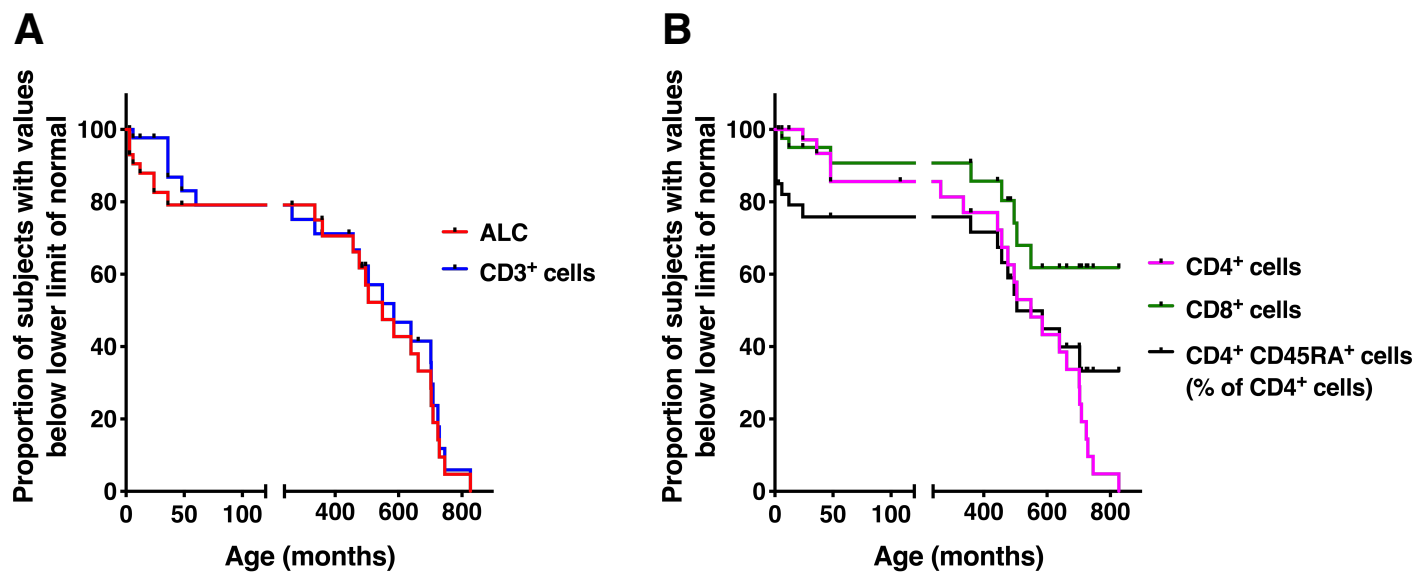


Figure S1: Panels A and B illustrate the proportion of subjects at various ages whose counts of total lymphocytes and CD3⁺ cells (**A**), and CD4⁺, CD8⁺ cell counts and proportion of naïve (CD45RA⁺) CD4⁺ cells (**B**) were below the lower limit of normal.

Table S1 – Immunological Data at Baseline in 21 Infants with Positive Newborn Screening for SCID and Heterozygous *FOXN1* Variants

Patient ID	TREC Value	ALC (cells/ μ L) [nv: 3400-7600]	CD3 (cells/ μ L) [nv: 2500-5500]	CD4 (cells/ μ L) [nv: 1660-4000]	CD8 (cells/ μ L) [nv: 560-1700]	CD19 (cells/ μ L) [nv: 300-2000]	CD16/CD56 (cells/ μ L) [nv: 170-1100]
P1	BSL	1420	271	207	54	68	124
P2	BSL	2834	992	595	368	737	935
P3	BSL	5852	1404	819	462	3804	585
P4	0	3360	14	11	6	966	1780
P5	BSL	2390	571	853	280	217	1283
P6	BSL	2200	964	635	322	686	457
P7	BSL	1519	759	604	152	152	592
P8	BSL	3410	1091	818	273	1159	1091
P9	BSL	2210	928	782	135	824	398
P10	BSL	1620	327	194	99	341	379
P11	BSL	900	329	240	96	404	738
P12	0	2420	73	70	0	920	992
P13	BSL	3518	538	464	81	707	1970
P14	0	na	162	132	13	735	291
P15	BSL	2400	720	570	150	930	730
P16	0	1250	170	140	20	310	130
P17	0	1070	110	70	0	630	170
P18	BSL	2090	374	309	54	1109	585
P19	0	1000	11	3	4	508	364
P20	BSL	2560	1583	1078	488	913	303
P21	BSL	1193	554	355	156	266	170

Patient ID refers to Table 1. ALC, Absolute lymphocyte count; BSL, below state limit; na, not available; nv, normal values.