

DHX9 inhibits epithelial-mesenchymal transition in human lung adenocarcinoma

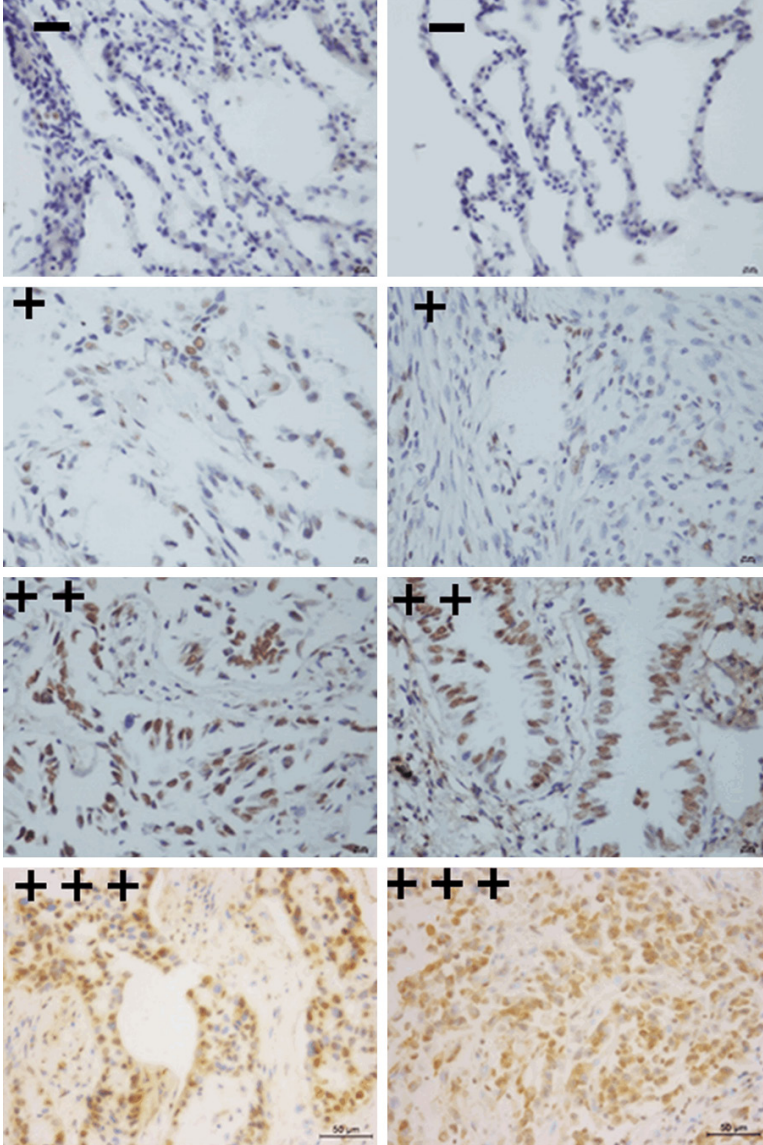


Figure S1. All collected tumor tissues were immunostained with a monoclonal anti-DHX9 antibody. Representative images of DHX9-negative (-: positive cell ratio was 0% to 10%), DHX9 weakly positive (+: positive cell ratio was 11% to 30%), DHX9-positive (+: positive cell ratio was 31% to 70%), and DHX9 strongly positive (+++: positive cell ratio was 71% to 100%) were shown.