

Endophilin A2 attenuates cardiac hypertrophy

Table S1. Rat-specific primer sequences for qPCR

Gene	Forward sequence (5'-3')	Reverse sequence(5'-3')
ANF	AAAGCAAAGTGGGGCT	GGGATCTTTTGCGATCT
BNP	AGAGAGCAGGACACCATC	AAGCAGGAGCAGAATCATC
β -MHC	TGCAGTTAAAGGTGAAGGC	CAGGGCTTCACAGGCAT
Fibronectin	TTTGACTTCACCACCAGC	TGAGACCCAGGAGACCAC
Collagen I	ACCCTAACCAAGGCTGCAAC	GAATCCATCGGTGCTGCTCT
GAPDH	GCAAGTTCAACGGCACAG	GCCAGTAGACTCCACGACAT

Abbreviations: ANF: atrial natriuretic factor; BNP: brain natriuretic polypeptide; β -MHC: β -myosin heavy chain; qPCR: quantitative real-time polymerase chain reaction.

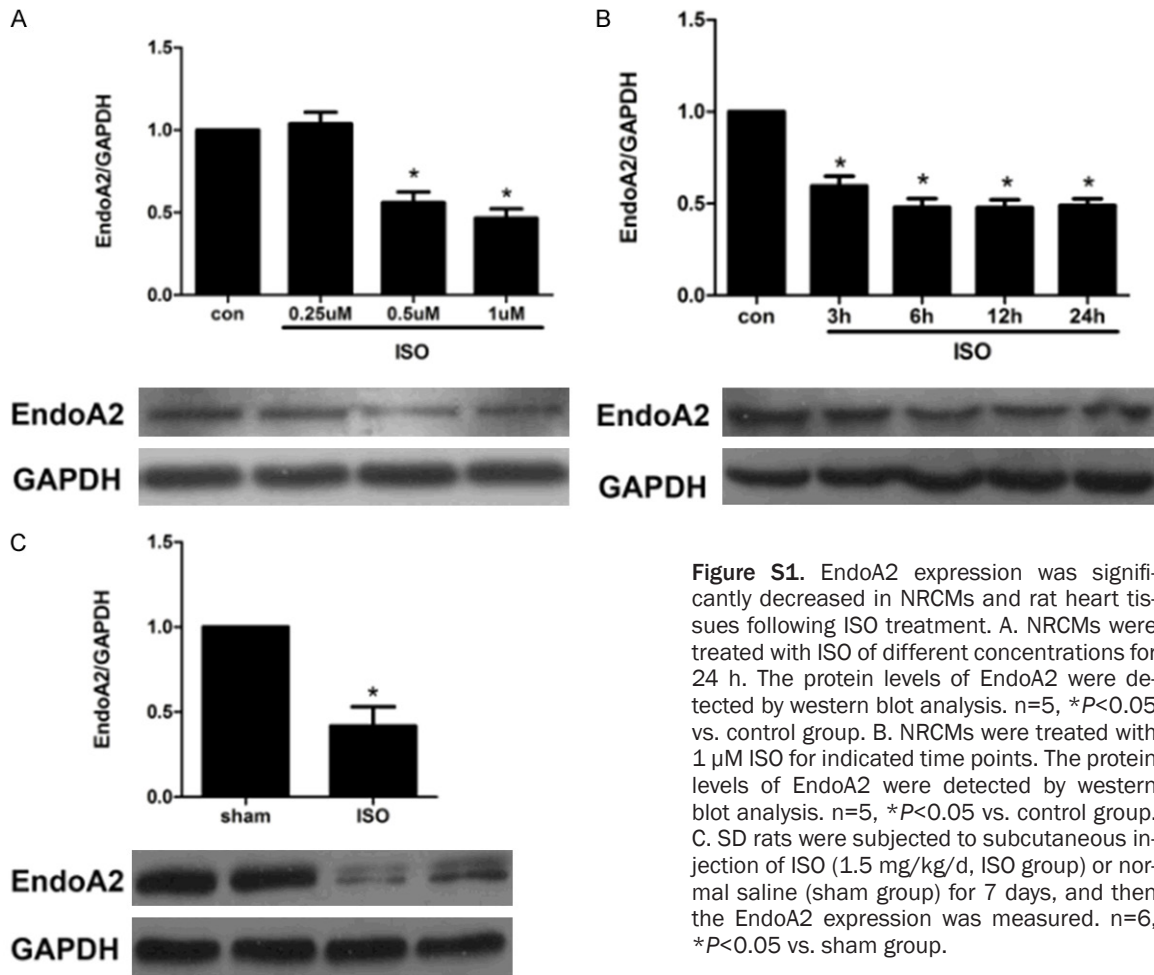


Figure S1. EndoA2 expression was significantly decreased in NRCMs and rat heart tissues following ISO treatment. A. NRCMs were treated with ISO of different concentrations for 24 h. The protein levels of EndoA2 were detected by western blot analysis. n=5, * P <0.05 vs. control group. B. NRCMs were treated with 1 μ M ISO for indicated time points. The protein levels of EndoA2 were detected by western blot analysis. n=5, * P <0.05 vs. control group. C. SD rats were subjected to subcutaneous injection of ISO (1.5 mg/kg/d, ISO group) or normal saline (sham group) for 7 days, and then the EndoA2 expression was measured. n=6, * P <0.05 vs. sham group.

Endophilin A2 attenuates cardiac hypertrophy

Table S2. Echocardiographic parameters of rats

Group	Sham	Ad-EndoA2	ISO	ISO+Ad-lacZ	ISO+Ad-EndoA2
LVAWd (mm)	1.66±0.11	1.62±0.21	2.56±0.09*	2.68±0.17*	1.78±0.22#
LVAWs (mm)	2.94±0.25	2.86±0.22	4.12±0.11*	4.33±0.44*	3.15±0.15#
LVIDd (mm)	5.84±0.33	6.18±0.38	4.31±0.22*	4.52±0.25*	5.36±0.27#
LVIDs (mm)	2.85±0.11	2.96±0.18	1.32±0.09*	1.45±0.12*	2.08±0.19#
LVPWd (mm)	2.01±0.14	1.95±0.25	2.89±0.14*	2.78±0.16*	1.92±0.18#
LVPWs (mm)	3.11±0.16	2.91±0.22	4.47±0.31*	4.05±0.29*	3.08±0.22#
CO (mL/min)	56.51±3.94	54.17±5.61	28.49±4.31*	26.31±3.81*	42.96±5.22#
EF%	82.61±1.61	77.81±4.31	97.69±2.11*	98.31±3.52*	83.51±4.62#
FS%	52.29±1.91	47.72±4.35	72.28±2.18*	78.62±5.21*	56.21±3.81#

Abbreviations: LVAW: left ventricular anterior wall thickness; LVID: left ventricular internal diameter; LVPW: left ventricular posterior wall thickness; CO: cardiac output; EF: ejection fraction; FS: fractional shortening; ISO: isoproterenol; Ad-EndoA2: adenovirus encoding EndoA2. Data were presented as mean ± standard error of the mean. n=6, *P<0.05 vs. sham group, #P<0.05 vs. ISO group.

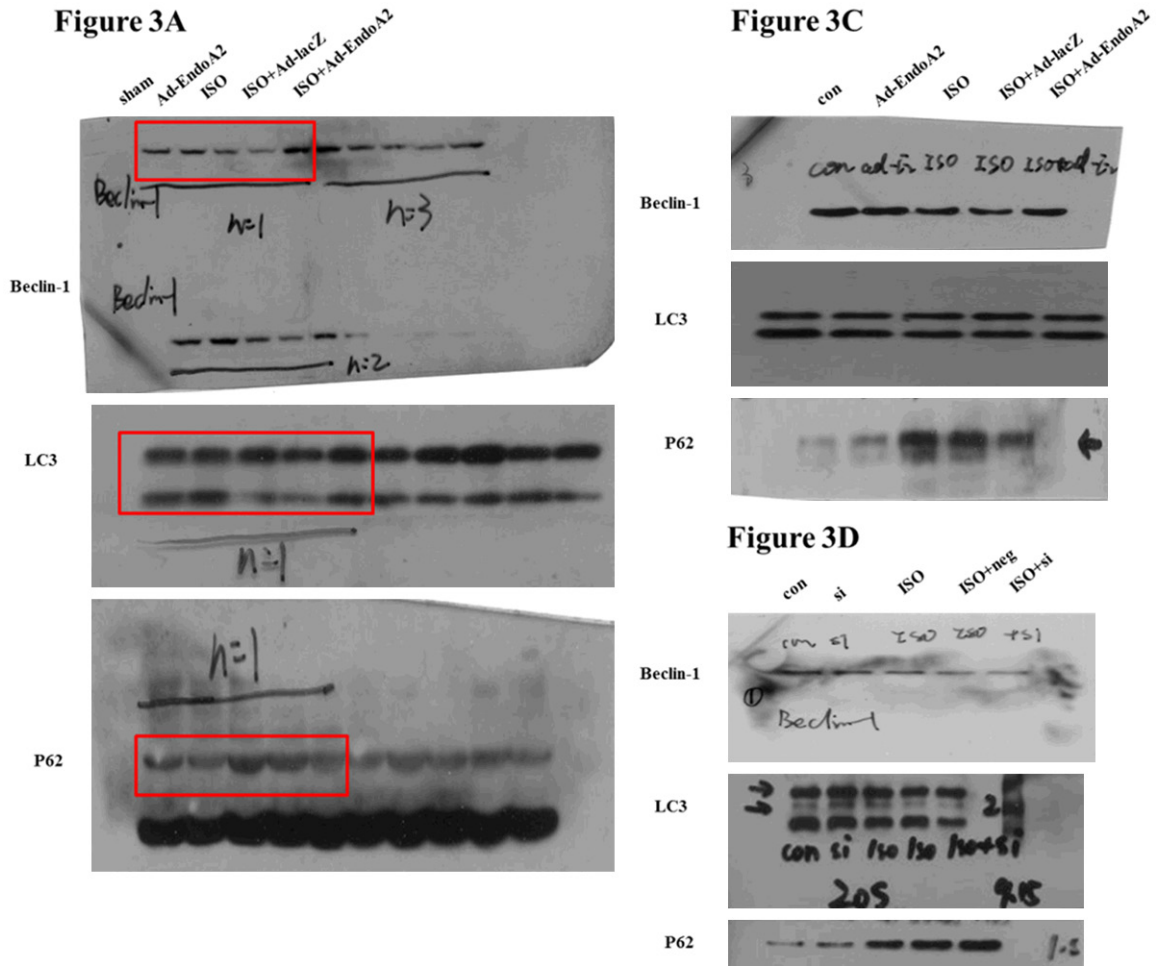


Figure S2. Original western images of Figure 3.